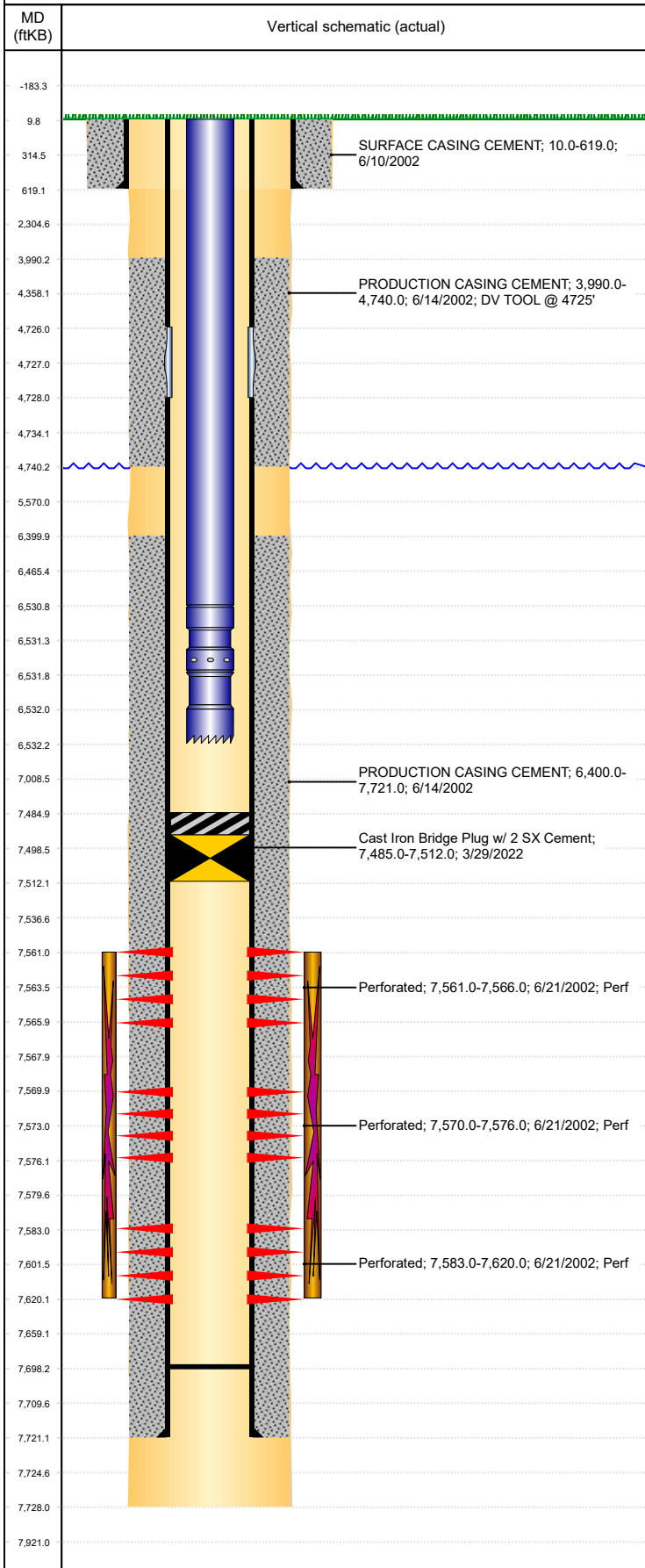


Well Name: BB DRAW H 03-05JI

VERTICAL, ORIGINAL HOLE, 4/13/2022 8:38:20 AM



Well Header										
API 05-123-20937		Business Unit DJ BASIN			District 15		Well Config VERTICAL			
KB - GL / MSL (ft... 10.00		Spud Date 6/9/2002		P & A Date		Well Production Status TA		SoRT Yes		
Comment DV tool @ 4738										
Surface Location (Congressional)										
Qtr 3 SW	Qtr 4 NW	Section 3	Twnshp 3	Twnsh... N	Range 65	Rng E/... W	Actual Latitude (°) 40.25573769	Actual Longitude (°) -104.65641477		
Wellbore Sections										
Section Des			Size (in)			Act Top, MD (ftKB)		Act Btm, MD (ftKB)		
SURFACE			12 1/4			10		619		
PRODUCTION			7 7/8			619		7,728		
Casing Strings										
Csg Des			Run Date		OD (in)	Wt/Len (lb/ft)	Grade	Top, MD (ftKB)	MD (ftKB)	
Surface			6/10/2002		8 5/8	24.00		10.0	619.0	
Production			6/14/2002		4 1/2	11.60	M-80	10.0	7,721.0	
Cement										
Des					Start Date		Top (ftKB)		Btm (ftKB)	
SURFACE CASING CEMENT					6/10/2002		10.0		619.0	
PRODUCTION CASING CEMENT					6/14/2002		3,990.0		4,740.0	
PRODUCTION CASING CEMENT					6/14/2002		6,400.0		7,721.0	
Zone Statuses										
Zone Name		Status Date		Status	Fluid Type		Job		Prod Method	
J SAND		7/7/2002		PR	Oil				Flowing	
J SAND		5/6/2010		PR					Flowing	
Perforation Data										
Linked Zone			Bnch/Stg	Entered Shot Total		Top (ftKB)		Btm (ftKB)	Date	
J SAND, ORIGINAL HOLE				10		7,561.00		7,566.00	6/21/2002	
J SAND, ORIGINAL HOLE				12		7,570.00		7,576.00	6/21/2002	
J SAND, ORIGINAL HOLE				74		7,583.00		7,620.00	6/21/2002	
Stimulation Intervals										
Zone					Start Date		Top (ftKB)		Btm (ftKB)	
J SAND, ORIGINAL HOLE					7/5/2002		7,561.0		7,620.0	
Other In Hole										
Run Date		Des				Make		OD (in)	Top (ftKB)	Btm (ftKB)
3/29/2022		Cast Iron Bridge Plug w/ 2 SX Cement						4	7,485.0	7,512.0
Logs										
Date		Type					Top, MD (ftKB)		Btm, MD (ftKB)	
6/14/2002		Compensated Density					4,300.0		7,708.0	
6/14/2002		Induction					619.0		7,728.0	
6/21/2002		Cement Bond					3,900.0		7,691.0	
Plug Back Total Depths										
Date		Type		Com					Depth (ftKB)	
6/14/2002		FLOAT COLLAR							7,703.0	
4/23/2008		FILL		BAILED FILL TO 7698' KB.					7,698.0	