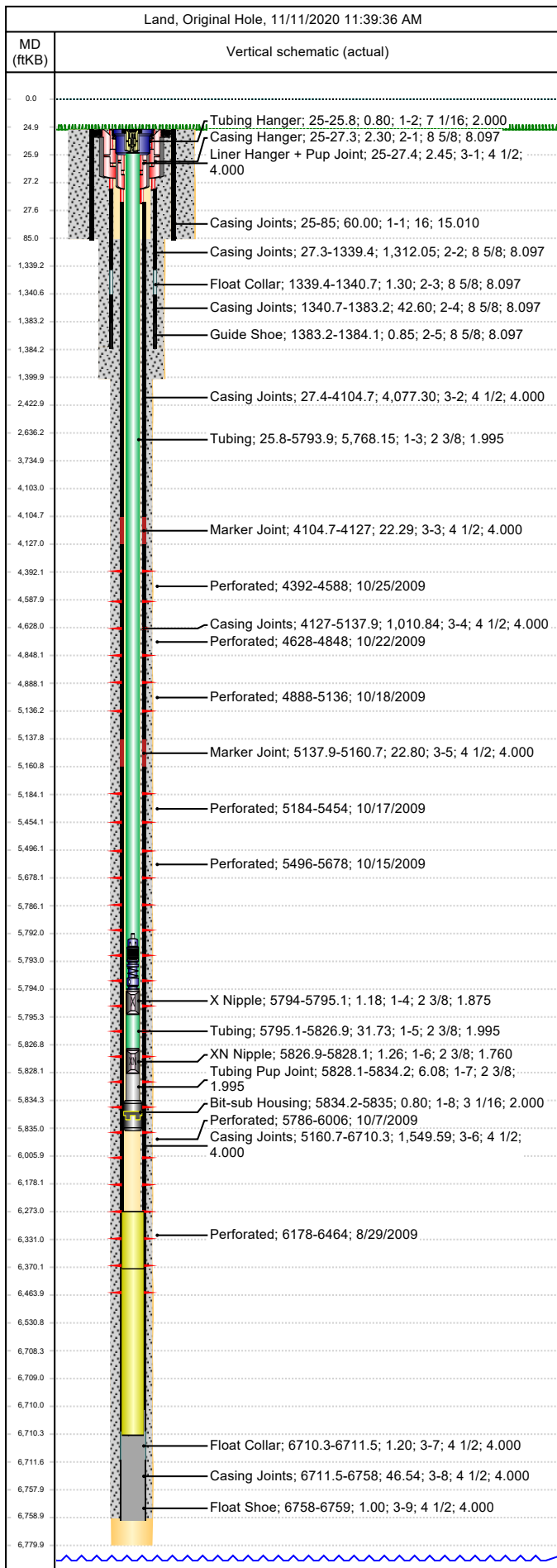




Wellbore Schematic

Well Name SKR-598-25-BV-10	Lease Chevron USA	Field Name Skinner Ridge	Business Unit Mid-Continent
-------------------------------	----------------------	-----------------------------	--------------------------------

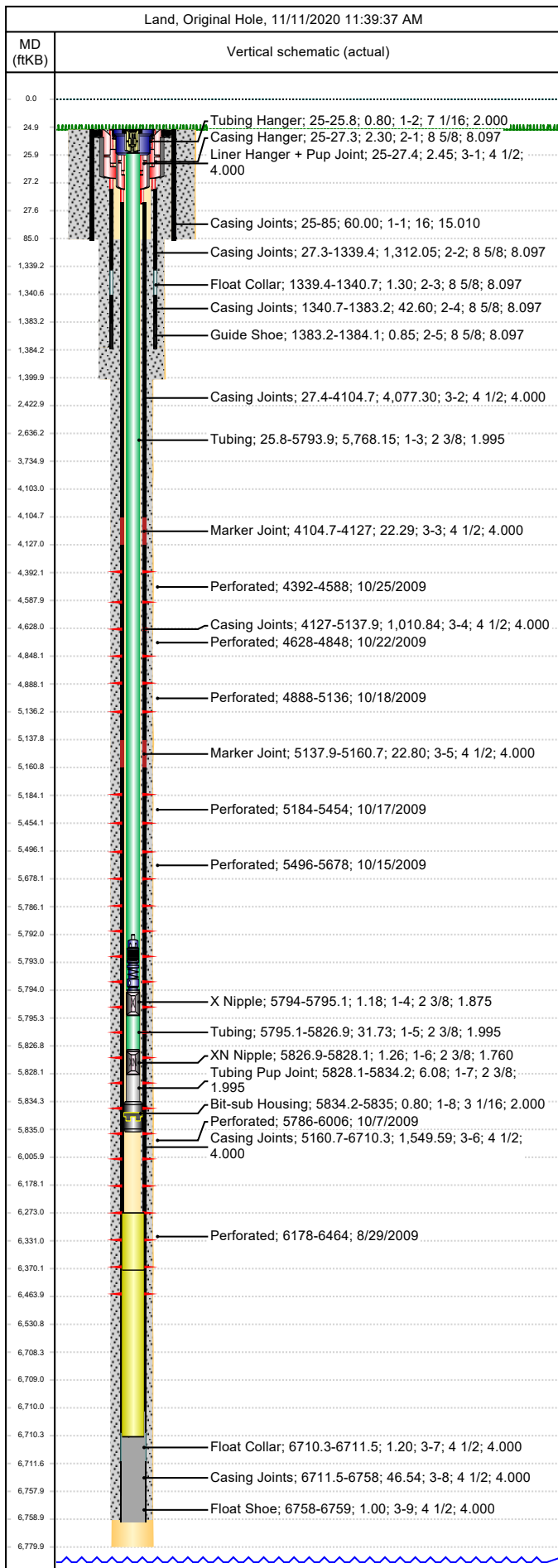


Job Details						
Job Category			Start Date		Rig/Unit End Date	
Well Services			4/22/2014		4/22/2014	
Casing Strings						
Csg Des	OD (in)	Wt/Len (lb/ft)	Grade	Top Thread	Set Depth (MD) (ftKB)	
Conductor	16	84.00	J-55		85	
Surface	8 5/8	24.00	J-55		1384.1	
Production Casing	4 1/2	11.60	N-80		6759	
Tubing Strings						
Tubing - Production set at 5,835.0ftKB on 12/1/2009 11:00						
Tubing Description			Run Date	String Length (ft)	Set Depth (MD) (ftKB)	
Tubing - Production			12/1/2009	5,835.00	5,835.0	
Item Des	Jts	OD (in)	Wt (lb/ft)	Grade	Len (ft)	Btm (ftKB)
KBGL					25.00	25.0
Tubing Hanger		7 1/16		4140	0.80	25.8
Tubing	183	2 3/8	4.70	L-80	5,768.15	5,794.0
X Nipple		2 3/8			1.18	5,795.1
Tubing	1	2 3/8	4.70	L-80	31.73	5,826.9
XN Nipple		2 3/8			1.26	5,828.1
Tubing Pup Joint		2 3/8	4.70	L-80	6.08	5,834.2
Bit-sub Housing		3 1/16			0.80	5,835.0
Tubing Landed @						5,835.0
Perforations						
Date	Top (ftKB)	Btm (ftKB)	Shot Dens (shots/ft)	Entered Shot Total	Linked Zone	
10/25/2009	4,392.0	4,588.0	3.0	30	Mesa Verde - WMFK - Williams Fork, Original Hole	
10/22/2009	4,628.0	4,848.0	3.0	30	Mesa Verde - WMFK - Williams Fork, Original Hole	
10/18/2009	4,888.0	5,136.0	3.0	27	Mesa Verde - WMFK - Williams Fork, Original Hole	
10/17/2009	5,184.0	5,454.0	3.0	30	Mesa Verde - WMFK - Williams Fork, Original Hole	
10/15/2009	5,496.0	5,678.0	3.0	30	Mesa Verde - WMFK - Williams Fork, Original Hole	
10/7/2009	5,786.0	6,006.0	3.0	30	Mesa Verde - WMFK - Williams Fork, Original Hole	
8/29/2009	6,178.0	6,464.0	3.0	27	Mesa Verde - WMFK - Cameo Coal, Original Hole	
Other Strings						
Run Date	Pull Date	Set Depth (ftKB)	Com			
Other In Hole						
Des	Top (ftKB)	Btm (ftKB)	Run Date	Pull Date	Com	
Fish-Cable head,CCL & Baker 10I	4,336.0	4,350.0	10/27/2009	11/25/2009	Cable head, CCL, Wt bar & Baker 10	
Bear Claw Solid Plug	4,350.0	4,352.0	10/27/2009	11/30/2009	Solid Top Plug	
Bear Claw Frac Plug	4,614.0	4,616.0	10/25/2009	11/30/2009	Bio Ball composite, flow thru, frac, bridge plug	
Bear Claw Frac Plug	4,870.0	4,872.0	10/21/2009	11/30/2009	Bio Ball composite, flow thru, frac, bridge plug	
Bear Claw Frac Plug	5,160.0	5,162.0	10/18/2009	11/30/2009	Bio Ball composite, flow thru, frac, bridge plug	
Bear Claw Frac Plug	5,470.0	5,472.0	10/17/2009	11/30/2009	Bio Ball composite, flow thru, frac, bridge plug	
Bear Claw Frac Plug	5,710.0	5,712.0	10/15/2009	11/30/2009	Bio Ball composite, flow thru, frac, bridge plug	
Tubing Plunger	5,791.9	5,792.9	7/27/2010	4/22/2014	Operator re-ran assembly after tag run	
Tubing Plunger, 4/22/2014	5,791.9	5,792.9	4/22/2014			
Bumper Spring	5,792.9	5,793.9	7/27/2010	4/22/2014	Operator re-ran assembly after tag run	
Bumper Spring, 4/22/2014	5,792.9	5,793.9	4/22/2014			



Wellbore Schematic

Well Name SKR-598-25-BV-10	Lease Chevron USA	Field Name Skinner Ridge	Business Unit Mid-Continent
-------------------------------	----------------------	-----------------------------	--------------------------------



Other In Hole					
Des	Top (ftKB)	Btm (ftKB)	Run Date	Pull Date	Com
HES Solu-Plug	6,110.0	6,112.0	10/7/2009	11/30/2009	Fast Drill Obsidian Solu-Plug
Fill, 8/29/2013	6,273.0	6,370.0	8/29/2013		Tag for fill w/Slick Line 8/29/2013
Fill Tag, 4/22/2014	6,273.0	6,370.0	4/22/2014		Tag 4/22/2014, fill tag on 8/29/2013 @ 6,255' now @ 6273'.
Fill, 7/27/2010	6,370.0	6,710.3	7/27/2010		
Pumped off	6,708.3	6,709.1	12/1/2009		
Mill	6,709.1	6,710.3	12/1/2009		
PBTD	6,710.0	6,759.0	5/23/2008		