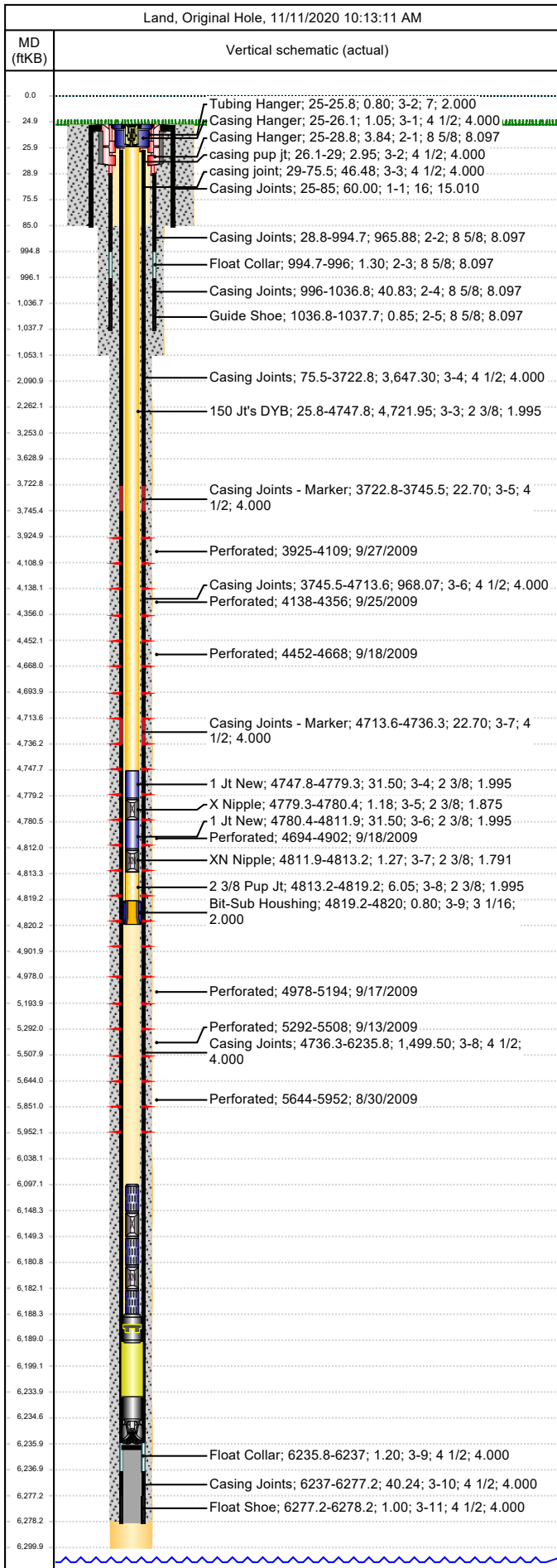




Wellbore Schematic

Well Name SKR-598-25-BV-06	Lease Chevron USA	Field Name Skinner Ridge	Business Unit Mid-Continent
-------------------------------	----------------------	-----------------------------	--------------------------------



Job Details						
Job Category			Start Date		Rig/Unit End Date	
Well Services			10/6/2014		10/13/2014	
Casing Strings						
Csg Des	OD (in)	Wt/Len (lb/ft)	Grade	Top Thread	Set Depth (MD) (ftKB)	
Conductor	16	84.00	J-55		85	
Surface	8 5/8	24.00	J-55		1037.7	
Production Casing	4 1/2	11.60	N-80	LT&C	6278.2	
Tubing Strings						
Prod Tbg, 8/19/2014 set at 4,820.1ftKB on 8/19/2014 12:00						
Tubing Description			Run Date	String Length (ft)	Set Depth (MD) (ftKB)	
Prod Tbg, 8/19/2014			8/19/2014	4,820.05	4,820.1	
Item Des	Jts	OD (in)	Wt (lb/ft)	Grade	Len (ft)	Btm (ftKB)
KBGL					25.00	25.0
Tubing Hanger		7		4140	0.80	25.8
150 Jt's DYB	150	2 3/8	4.70	L-80	4,721.95	4,747.7
1 Jt New	1	2 3/8	4.70	L-80	31.50	4,779.2
X Nipple		2 3/8		L-80	1.18	4,780.4
1 Jt New	1	2 3/8	4.70	L-80	31.50	4,811.9
XN Nipple		2 3/8		L-80	1.27	4,813.2
2 3/8 Pup Jt		2 3/8	4.70	L-80	6.05	4,819.3
Bit-Sub Houshing		3 1/16			0.80	4,820.1
Tubing Landed @						4,820.1
Perforations						
Date	Top (ftKB)	Btm (ftKB)	Shot Dens (shots/ft)	Entered Shot Total	Linked Zone	
9/27/2009	3,925.0	4,109.0	3.0	30	Mesa Verde - WMFK - Williams Fork, Original Hole	
9/25/2009	4,138.0	4,356.0	0.0	30	Mesa Verde - WMFK - Williams Fork, Original Hole	
9/18/2009	4,452.0	4,668.0	0.0	27	Mesa Verde - WMFK - Williams Fork, Original Hole	
9/18/2009	4,694.0	4,902.0	0.0	30	Mesa Verde - WMFK - Williams Fork, Original Hole	
9/17/2009	4,978.0	5,194.0	0.0	30	Mesa Verde - WMFK - Williams Fork, Original Hole	
9/13/2009	5,292.0	5,508.0	0.0	24	Mesa Verde - WMFK - Williams Fork, Original Hole	
8/30/2009	5,644.0	5,952.0	0.0	30	Mesa Verde - WMFK - Cameo Coal, Original Hole	
Other Strings						
Run Date	Pull Date	Set Depth (ftKB)	Com			
Other In Hole						
Des	Top (ftKB)	Btm (ftKB)	Run Date	Pull Date	Com	
Tubing Plunger	3,848.5	3,849.7	4/23/2014	8/7/2014		
Bumper Spring	3,849.8	3,851.0	6/16/2011	4/23/2014		
Bumper Spring, 4/23/2014	3,849.8	3,851.0	4/23/2014	8/11/2014		
Kill Plug	3,855.0	3,857.0	9/28/2009	10/23/2009	Kill Plug	
Bear Claw Plug	4,126.0	4,128.0	9/27/2009	10/23/2009	Bio Ball composite, flow thru, frac, bridge plug	
Sand fill, 4/23/2014	4,365.0	4,746.0	4/23/2014	8/8/2014		
Bear Claw Plug	4,390.0	4,392.0	9/27/2009	10/23/2009	Bio Ball composite, flow thru, frac, bridge plug	
Bear Claw Plug	4,683.0	4,685.0	9/18/2009	10/23/2009	Bio Ball composite, flow thru, frac, bridge plug	
Sand fill	4,746.0	5,166.0	3/29/2010	8/14/2014		
Blockage	4,775.0	4,780.0	3/29/2010	8/14/2014		
Bear Claw Plug	4,929.0	4,931.0	9/18/2009	10/23/2009	Bio Ball composite, flow thru, frac, bridge plug	
Sand Fill	5,166.0	6,236.0	3/3/2010	8/18/2014	Tag w/ slick-line, 3/3/10	
Bear Claw Plug	5,239.0	5,241.0	9/17/2009	10/23/2009	Bio Ball composite, flow thru, frac, bridge plug	



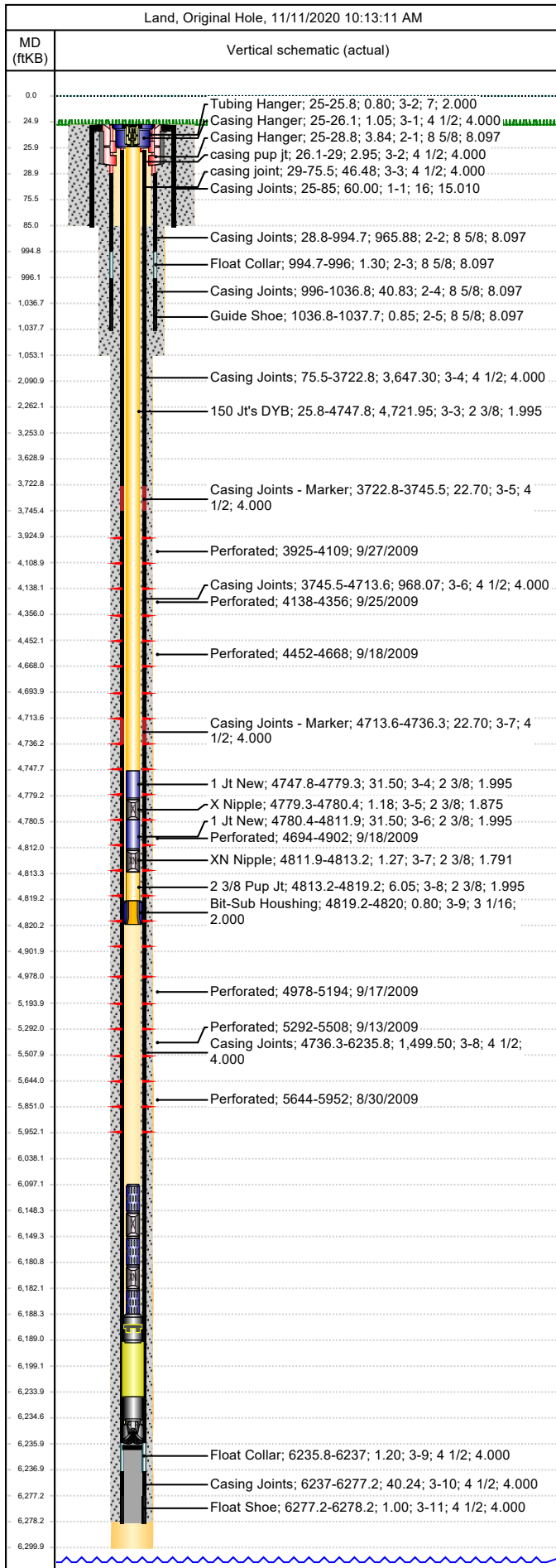
Wellbore Schematic

Well Name
SKR-598-25-BV-06

Lease
Chevron USA

Field Name
Skinner Ridge

Business Unit
Mid-Continent



Other In Hole					
Des	Top (ftKB)	Btm (ftKB)	Run Date	Pull Date	Com
Bear Claw Plug	5,559.0	5,561.0	9/13/2009	10/24/2009	Bio Ball composite, flow thru, frac, bridge plug
Fish, 2 3/8" parted tbg, 8/18/2014	6,097.0	6,148.2	8/18/2014		
"X" Nipple	6,148.2	6,149.4	8/18/2014		
1 jt 2 3/8" tbg	6,149.4	6,180.9	8/18/2014		
"XN" Nipple	6,180.9	6,182.2	8/18/2014		
2 3/8" X 6" pup jt	6,182.2	6,188.2	8/18/2014		
Bit sub housing	6,188.2	6,189.0	8/18/2014		
Sand Fill 8/18/2014	6,189.0	6,234.0	8/18/2014		
Pumped Off Bit-sub	6,233.8	6,234.6	10/24/2009		
Mill	6,234.6	6,235.8	10/24/2009		
PBTD	6,235.8	6,278.2	5/13/2008		