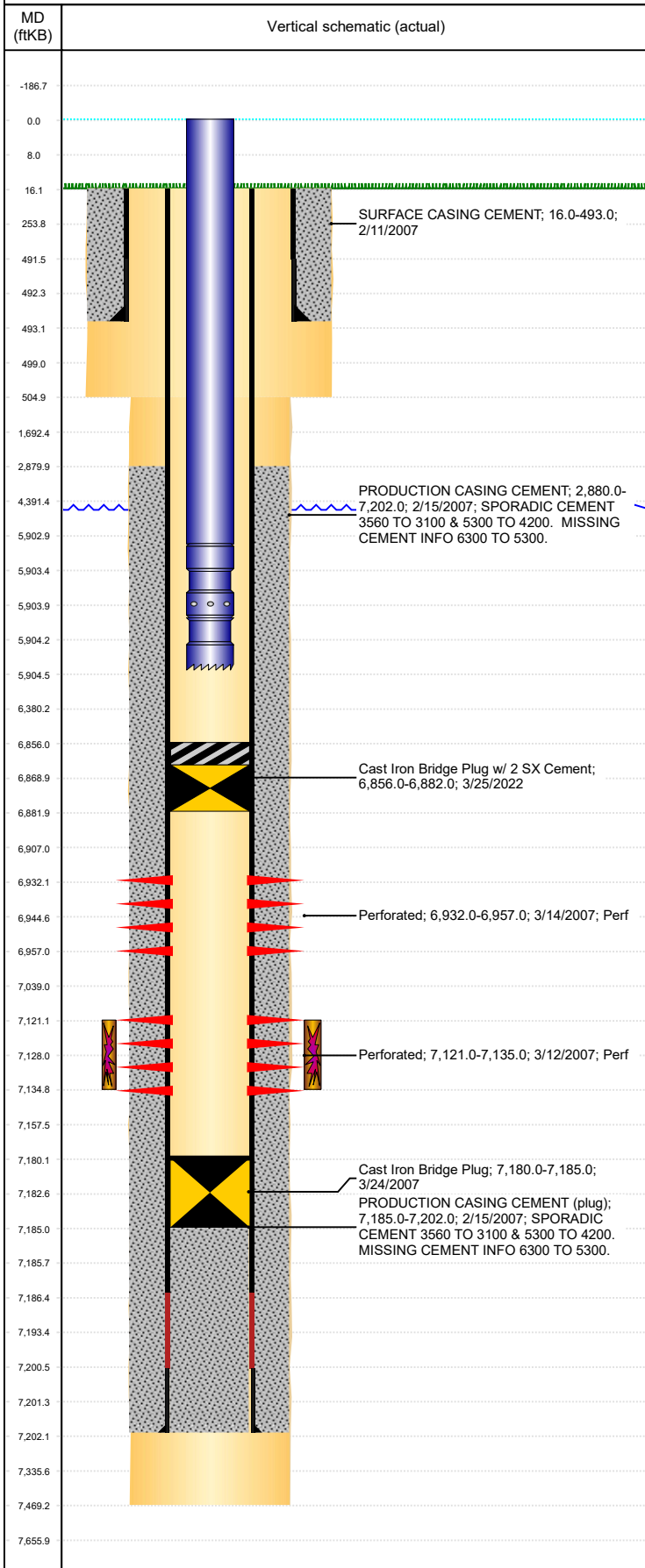


**Well Name: WILKINSON 01-35**

VERTICAL, ORIGINAL HOLE, 4/4/2022 9:43:47 AM



Well Header									
API 05-123-24190		Business Unit DJ BASIN		District 15		Well Config VERTICAL			
KB - GL / MSL (ft... 16.00		Spud Date 2/10/2007		P & A Date		Well Production Status TA			SoRT Yes
Comment ATTEMPTED NIO FRAC BUT NIO STACKED OUT									
Surface Location (Congressional)									
Qtr 3 SE	Qtr 4 SW	Section 1	Twonshp 6	Twonsh... N	Range 65	Rng E... W	Actual Latitude (°) 40.51127000	Actual Longitude (°) -104.61555000	
Wellbore Sections									
Section Des			Size (in)			Act Top, MD (ftKB)		Act Btm, MD (ftKB)	
SURFACE			12 1/4			16		505	
PRODUCTION			7 7/8			505		7,469	
Casing Strings									
Csg Des			Run Date		OD (in)	Wt/Len (lb/ft)	Grade	Top, MD (ftKB)	MD (ftKB)
Surface			2/11/2007		8 5/8	24.00		16.0	493.0
Production			2/15/2007		4 1/2	11.60	M-80	16.0	7,202.0
Cement									
Des					Start Date		Top (ftKB)		Btm (ftKB)
SURFACE CASING CEMENT					2/11/2007		16.0		493.0
PRODUCTION CASING CEMENT					2/15/2007		2,880.0		7,202.0
Zone Statuses									
Zone Name	Status Date	Status	Fluid Type	Job					Prod Method
NIOBRARA	2/4/2013	PR	Water						Flowing
NIOBRARA	3/25/2022	TA	Water						
CODELL	2/4/2013	PR	Water						Flowing
CODELL	7/13/2017	TA							
Perforation Data									
Linked Zone		Bnch/Stg	Entered Shot Total	Top (ftKB)		Btm (ftKB)		Date	
NIOBRARA, ORIGINAL HOLE		B	100	6,932.00		6,957.00		3/14/2007	
CODELL, ORIGINAL HOLE			56	7,121.00		7,135.00		3/12/2007	
Stimulation Intervals									
Zone				Start Date		Top (ftKB)		Btm (ftKB)	
CODELL, ORIGINAL HOLE				3/14/2007		7,121.0		7,135.0	
Other In Hole									
Run Date		Des			Make		OD (in)	Top (ftKB)	Btm (ftKB)
3/24/2007		Cast Iron Bridge Plug					4	7,180.0	7,185.0
3/25/2022		Cast Iron Bridge Plug w/ 2 SX Cement					3.99	6,856.0	6,882.0
Logs									
Date		Type					Top, MD (ftKB)		Btm, MD (ftKB)
2/15/2007		COMPENSATED DENSITY					3,000.0		7,265.0
2/15/2007		INDUCTION					493.0		7,265.0
3/9/2007		CBL/CCL/GR					2,750.0		7,183.0
Plug Back Total Depths									
Date		Type			Com				Depth (ftKB)
3/9/2007		FILL			DEPTH LOGGER ON CBL				7,185.0
3/24/2007		PLUG			DRILL OUT AND PUSH PLUG DOWN				7,180.0