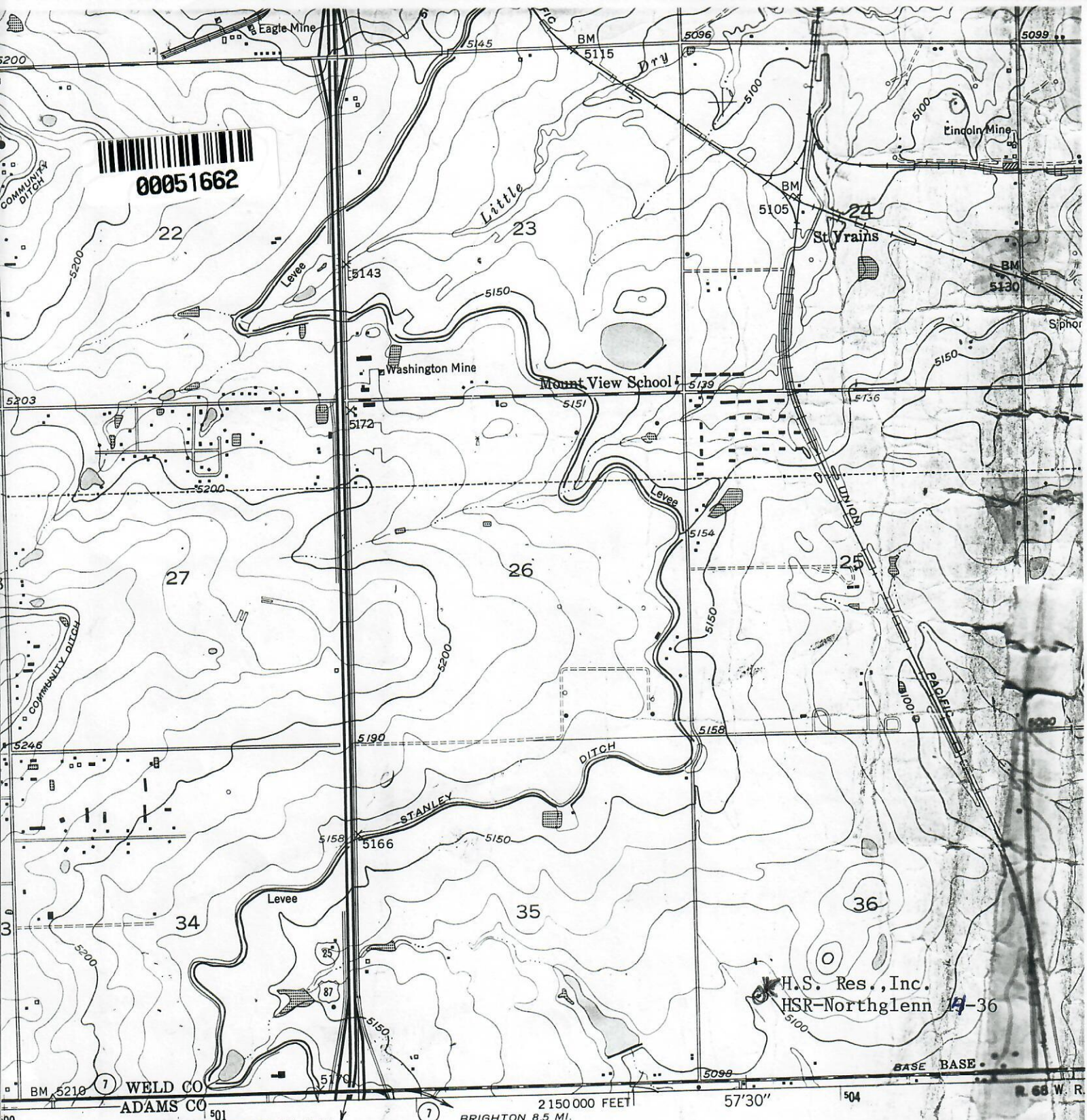
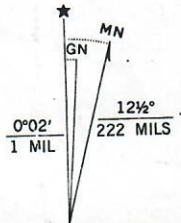


00051662



Map compiled, edited, and published by the Geological Survey as part of the Department of the Interior program for the development of the Missouri River Basin. Control by USGS and NOS/NOAA. Culture and drainage in part compiled from aerial photographs by multiplex methods. Topography by plane-table surveys 1950. Polyconic projection. 1927 North American datum. 10,000-foot grid based on Colorado coordinate system, north zone. 1000-meter Universal Transverse Mercator grid ticks, zone 13, shown in blue. To place on the predicted North American Datum 1983, move the projection lines 5 meters north and

UTM GRID AND 1979 MAGNETIC NORTH DECLINATION AT CENTER OF SHEET



CONTOUR NATIONAL GEOGRAPHIC

THIS MAP COMPLIES WITH THE NATIONAL MAP ACT OF 1947. FOR SALE BY THE GEOLOGICAL SURVEY, DEPARTMENT OF THE INTERIOR, WASHINGTON, D.C. 20508. A 50% DISCOUNT ON ALL TOPOGRAPHIC MAPS.

FREDE