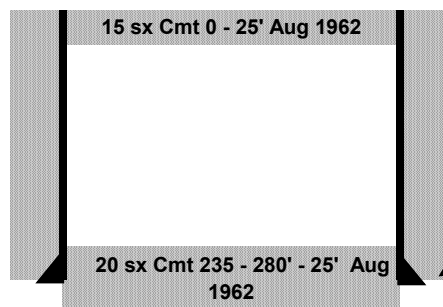




# Ignacio 34-8 (OWP) #3-18 La Plata County, Colorado Current Well Schematic as of 3/9/22



API: 05-067-05545-00  
Location: SWNW Sec. 18, T34N-R8W  
Field: Ignacio-Blanco

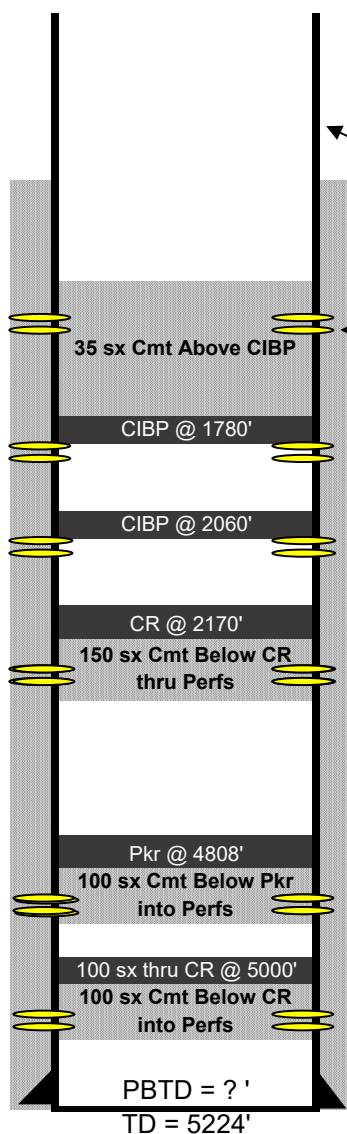
KB: Unknown  
GLE: 6910'

Spud: 11/11/1956

Surface Casing (set in 15" hole drilled to 241')  
10 3/4", 32.75 #/ft, H40 @ 240'. Cmt'd w/250 sx (unkwn type, yield, density)

## Formation Tops

|                 |       |
|-----------------|-------|
| Kirtland        | 984'  |
| Farmington      | ?     |
| Fruitland       | 1910' |
| Pictured Cliffs | 2326' |
| Lewis           | 2815' |
| Mesaverde       | 4475' |
| Cliff House     | 4815' |
| Menefee         | 4887' |
| Pt. Lookout     | 5025' |



Production Casing (set in 8.75" hole drilled to 5224'). Unkwn TOC.  
5", 11.5#/ft, Grade unrptd @ 5211'. Cmt'd w/200 sx (unkwn type, yield, density)  
Cut off during final P&A operations @ 1320' (August 1962).

Farmington Perfs 1720 - 1750'. Never produced. P&A'd August 1962.  
35 sk cmt cap above CIBP @ 1780' rptd plug from 1361' - 1700' August 1962

FC Perfs: 2038 - 2046'. Tested non-com. Cover w/CIBP @ 1780' in Dec. 1956  
Capped CIBP w/35 sx cmt. August 1962

FC Perfs: 2090 - 2110'. Tested non-com. Cover w/CIBP @ 2060. Dec 1956

Sqz Holes @ 2200'. 150 sx thru CR to cover Fruitland Dec 1956

MV Perfs 4868 - 4878'. Tested wet. 100 sk sqz thru Pkr @ 4808' Dec 1956

MV Perfs 5066-92 & 5110-22'. Tested wet. 100 sk sqz thru CR @ 5000'. Dec 1956