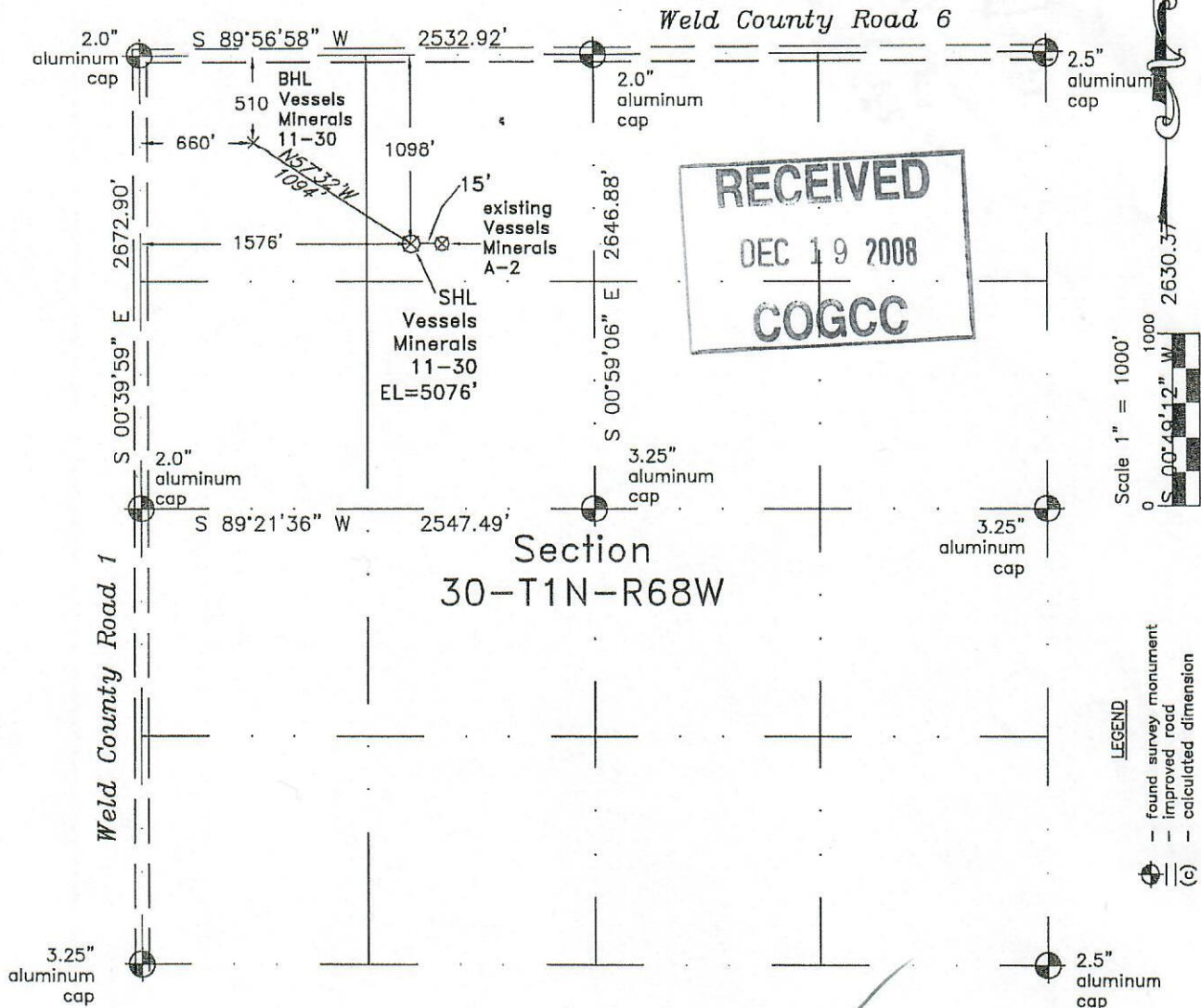


# WELL LOCATION CERTIFICATE

THIS MAP DOES NOT REPRESENT A BOUNDARY SURVEY



In accordance with a request from William Hambricht of EnCana Oil & Gas (USA) Inc., Frederick Land Surveying, Inc. has determined the location of the **VESSELS MINERALS 11-30** well site to be SHL: 1098' FNL and 1576' FWL, (BHL 510' FNL and 660' FWL) as measured at ninety (90) degrees from the section lines of Section 30, Township 1 North, Range 68 West of the 6th Principal Meridian, Weld County, Colorado.

## Proposed Surface Hole Data:

Latitude: N 40.02628° BHL(40.02790°)  
 Longitude: W 105.04972° BHL(105.05300°)  
 Nearest Building, Public Road,  
 Above Ground Utility, or Railroad: 1098'(road)  
 Nearest Property Line: 387'  
 PDOP: 0.2

## Notes:

- 1) Bearings based on NAD 83 Colorado North State Plane Coordinates using RTK GPS observations taken 11/13/08 by operator Tom Winans.
- 2) Elevations based on NGVD 88 GPS heights and Geoid 2003 corrections.
- 3) There are improvements within 200' of the location.
- 4) The location falls in an agricultural field.

**NOTICE:** According to Colorado law you MUST commence any legal action based upon any defect in this W.L.C. within 3 years after you first discover such defect. In no event may any action based upon any defect in this W.L.C. be commenced more than 10 years from this said date of the certification shown hereon.

I hereby certify that this Well Location Certificate was prepared by me or under my direct supervision on 11/18/2008 for and on behalf of EnCana Oil & Gas (USA) Inc. That it is not a Land Survey Plat or an Improvement Survey Plat and that it is not to be relied upon for establishment of fences, boundaries or other future improvements. Lines revised: 12-18-08

Benjamin A. Hambricht, PLS  
 Job #: 0811900

