

Arnold #1 Existing WBD



DESCRIPTION DEPTH WELLBORE WELL HISTORY

10sx Cement At Surface 7'

30sx Cement Plug
1.28cu.ft/sk from 780'-681'

8-5/8" Surface Casing:
(cement to surface)

775'

780'

50sx Cement Plug
1.28cu.ft/sk from 6750'-6592'

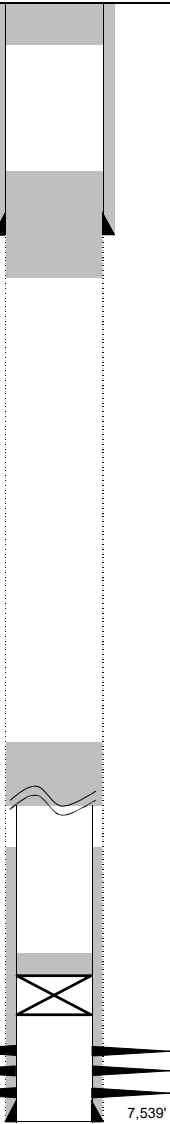
4-1/2" Casing Cut Off 6750'

Est TOC 6964'

CIBP w/ 4sx on Top 7100'

J-Sand Perforations: 7405' to 7455'

4-1/2" Production Casing:
(7-7/8" Hole) 7,539'



TD

WELL: Arnold #1

LOCATION: SENE 13 2N 64W
1650FNL 990FEL (ACTUAL)
40.141093°N, -104.494060°E

FORMATION: JSND 10/25/1984

API #: 05-123-11870

Field: Wattenberg

CURRENT STATUS: PA 1/24/1989

Spud: 08/20/84

Type	Size	Weight	Top	Bottom	Hole Size
Surface	8-5/8"	24 ppf	0	775'	12-1/4"
Top Production	4-1/2"	10.5 ppf	0	7,539'	7-7/8"

Elevation Data		
GL	4872	feet
KB	4882	feet
Difference	10	feet

Formation Tops Data		
Formation	Depth	
Base of Fox Hills	755'	MD
Base of Upper Pierre	1600'	MD
Niobrara	6624'	MD
Codell	6924'	MD
D Sand	7324'	MD
J Sand	7399'	MD