



10/28/2021

Mr. Austin Lee
HSE Advisor
Kerr-McGee Oil & Gas Onshore LP
501 N Division Blvd.
Platteville, Colorado 80651

**Re: Colorado Oil & Gas Conservation Commission (COGCC)
Vegetation Assessment Report (Interim Reclamation Completion Notice)
WADDLE-63N67W 24SWNW (336255)
Kerr-McGee Oil & Gas Onshore LP (Operator: 47120)**

Dear Mr. Lee,

Apex Companies, LLC (Apex) is presenting this letter to Kerr-McGee Oil & Gas Onshore LP (Kerr-McGee) documenting the results of a vegetation assessment that demonstrates successful completion of interim reclamation efforts, per COGCC Rule 1003, on the above-referenced location. Attached is a topographic location map and vegetation survey site map with additional location information.

Based on site visits and the completed vegetation assessment, Apex inspectors confirmed that the drilling and construction footprint has been reduced, recontoured, and seeded with a mixture consistent with species composition and reseeding practices common to the area.

On July 13, 2021, modified step-point vegetation surveys were conducted on the reclaimed portion of the well pad and on the adjacent reference areas. Foliar and basal cover, along with non-vegetated and noxious weed occurrences, were documented; 100 survey points were recorded within the reclaimed disturbance and 100 survey points were recorded within the reference area. Vegetation survey points were identified using a bullseye target tool. The survey methodology employed by Apex is based on the *step-point method* described in an interagency technical reference published by the Bureau of Land Management (BLM, 1996).

Noxious weeds listed by the Colorado Department of Agriculture were excluded from the percent of reference vegetative coverage calculations, per COGCC Rule 1003.e (2). Disturbed areas have been kept as free of all noxious weeds as practicable, per COGCC Rule 1003.f., and any noxious species identified in the reclamation area are designated as List C. To ensure reclamation vegetative composition meets the standards of Kerr-McGee Oil & Gas Onshore LP (Kerr-McGee) and the COGCC, undesirable cover is also quantified in the attached Summary of Field Data. Undesirable cover includes species identified by the United States Department of Agriculture (USDA) Natural Resource Conservation Service (NRCS) as introduced and not native to the lower 48 states, and not considered beneficial for reclamation purposes.

Survey results indicate the reclaimed area has a foliar vegetative cover that is 98.0% of the reference area. Vegetation survey results are provided in the attached survey summary table and data sheets. Based on the results of the survey, interim reclamation, as defined by COGCC Rule 1003.e (2), has been achieved. Photographs required by COGCC Rule 1003.e (3) are also attached along with the site map illustrating vegetation survey photo points and transect locations.

Apex appreciates the opportunity to provide environmental consulting services on this project. Should you have any questions or require additional information, please do not hesitate to contact me.

Sincerely,
Apex Companies, LLC

Scott M Taylor

Scott Taylor
Environmental Scientist 2
Scott.Taylor@Apexcos.com
781-635-2420

Reviewed By:

David Hitchings

David Hitchings
Project Manager
David.Hitchings@Apexcos.com
610-213-7485

Attachments:

1. Vegetation Survey - Summary of Field Data
2. Topographic Location Map
3. Vegetation Survey Site Map
4. Vegetation Assessment Photo Log
5. Vegetation Survey (Field Data Tables)

Vegetation Survey - Summary of Field Data

Client	Kerr-McGee Oil & Gas Onshore LP
COGCC Location Name (ID)	WADDLE-63N67W 24SWNW (336255)
Assessment Date	7/13/2021
Inspector Name	Scott Taylor

Based on the survey methodology, the foliar cover (%) in each survey area is calculated by summing the total number of foliar occurrences, excluding noxious weeds, and dividing by the total occurrences in the transects. For this location:

Reclaim Area (Foliar Cover)	Reference Area (Foliar Cover)
$(82 + 14 + 0) / 196 =$ 49.0%	$(86 + 14 + 0) / 200 =$ 50.0%

For the purposes of this assessment, the undesirable foliar cover (%) is calculated by summing the total number of undesirable* foliar occurrences and dividing by the total occurrences in the transects, excluding noxious weeds. For this location:

Reclaim Area (Undesirable Foliar Cover)	Reference Area (Undesirable Foliar Cover)
$14 / (82 + 14 + 0) =$ 14.6%	$14 / (86 + 14 + 0) =$ 14.0%

The percent of reference used to evaluate the reclamation area for compliance with COGCC Rule 1003.e(2) is calculated by dividing the foliar cover (%) in the reclaim area by the foliar cover (%) in the reference area. For this location:

Percent of Reference (Reclaim % / Reference %)
$49.0\% / 50.0\% =$ 98.0%

Reclaim Area Vegetation

Desirable Foliar Cover	41.8%
Desirable Basal Cover	42.9%
Non Vegetated	1.0%
Noxious Weeds Cover	0.0%
Undesirable Cover	14.3%
Quality Assurance Total <i>(must equal 100)</i>	100.0%
Grass (Foliar)	82
Forb (Foliar)	14
Shrubs (Foliar)	0
Noxious Weed (Foliar)	0
Grass (Basal)	84
Forb (Basal)	14
Shrubs (Basal)	0
Noxious Weed (Basal)	0
Bare Ground	0
Litter	2
Rock	0
Total Occurrences	196

Reference Area Vegetation

Desirable Foliar Cover	43.0%
Desirable Basal Cover	41.5%
Non Vegetated	2.0%
Noxious Weeds Cover	0.0%
Undesirable Cover	13.5%
Quality Assurance Total <i>(must equal 100)</i>	100.0%
Grass (Foliar)	86
Forb (Foliar)	14
Shrubs (Foliar)	0
Noxious Weed (Foliar)	0
Grass (Basal)	83
Forb (Basal)	13
Shrubs (Basal)	0
Noxious Weed (Basal)	0
Bare Ground	0
Litter	4
Rock	0
Total Occurrences	200

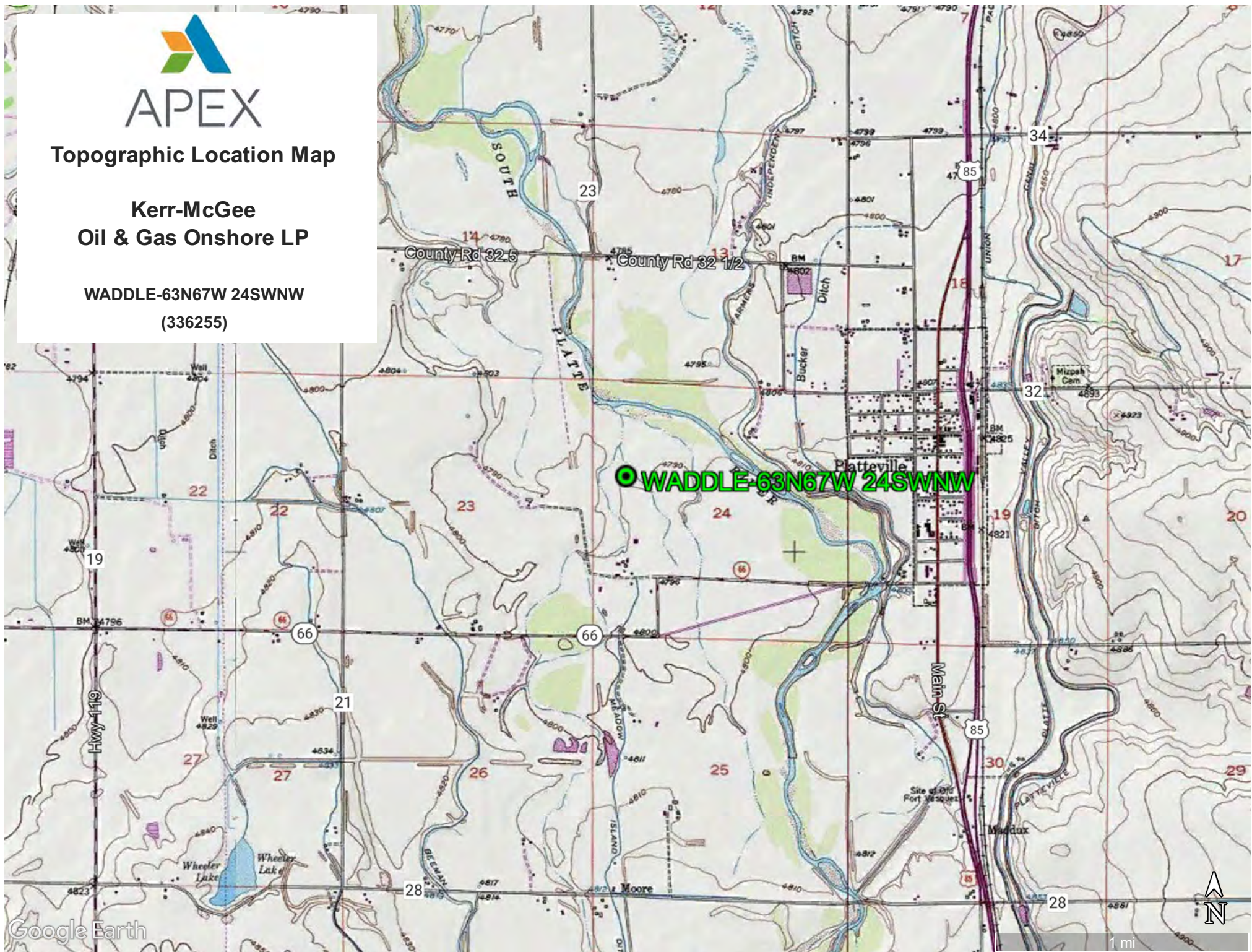
* Identified as introduced and non-native to Colorado by the United States Department of Agriculture Natural Resources Conservation Service.



Topographic Location Map

**Kerr-McGee
Oil & Gas Onshore LP**

**WADDLE-63N67W 24SWNW
(336255)**

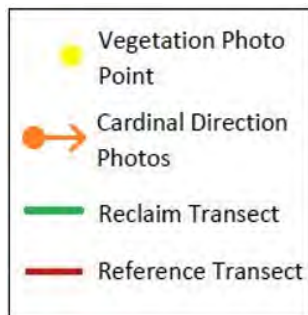




Vegetation Survey Site Map

Kerr-McGee Oil & Gas Onshore LP

WADDLE-63N67W 24SWNW
(336255)



Legal Description: SWNW, Sec. 24, 3N-67W

Lat/Long: 40.2127/-104.84628

County: Weld

Land Use: Non-Cropland

Reference Area Foliar Cover: 50.0%

Reclaim Area Foliar Cover: 49.0%

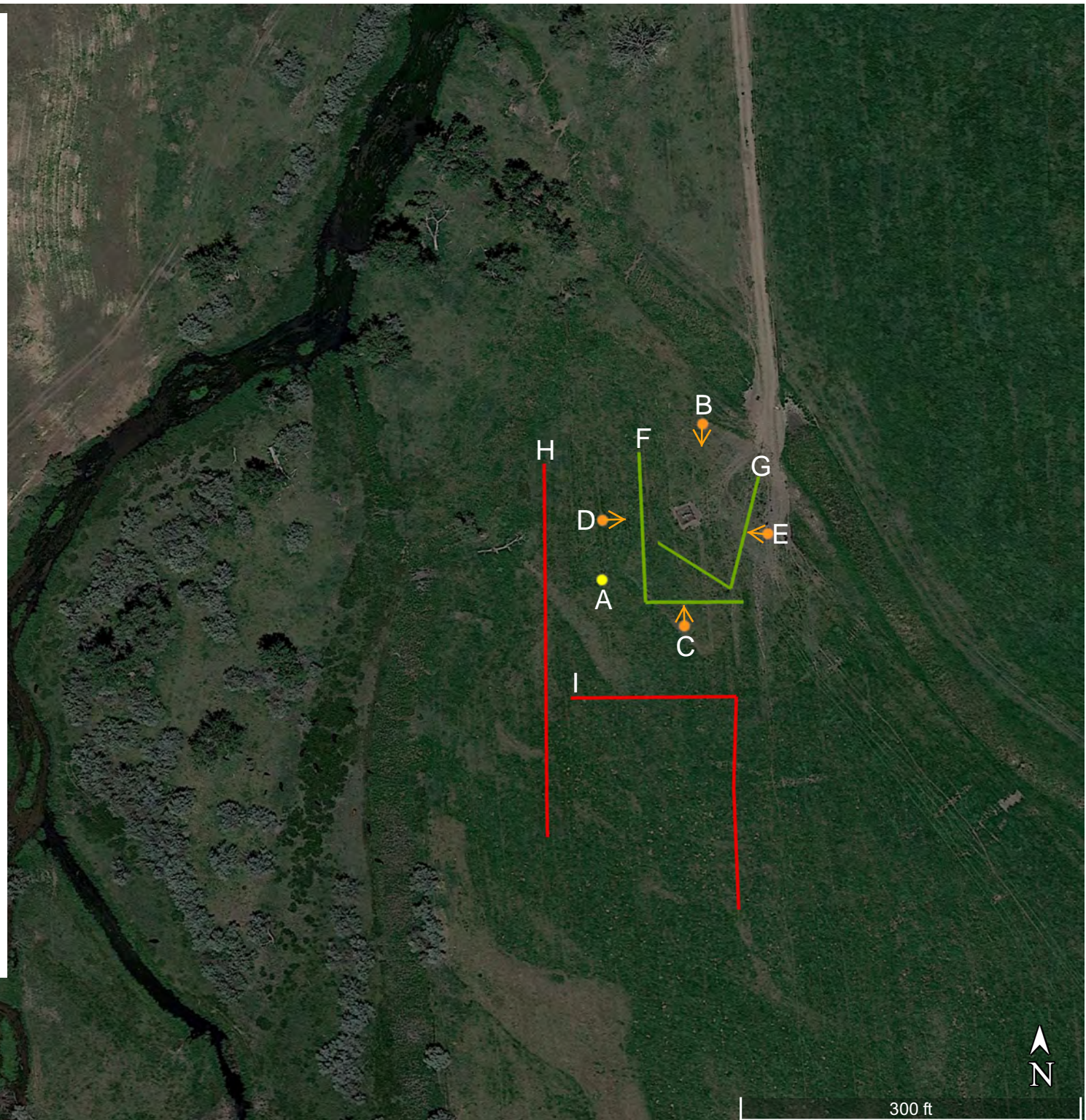
Cover Ratio (Reclaim/Reference): 98.0%

Inspector: S. Taylor

Assessment Date: 07/13/2021

Aerial Imagery Date: 06/10/2021

**Please reference coordinate disclaimer on the photo log pages.*



Vegetation Assessment Photo Log

Date Completed - 07/13/2021

Client - **Kerr-McGee Oil & Gas Onshore LP**

Location Name (ID) - **WADDLE-63N67W 24SWNW (336255)**



Photo Point A: Edge of Disturbance - Facing East

*Geographic coordinates provided in the borders of all attached photos are based on points identified by the mobile phone or tablet which collected the photo. Coordinate accuracy in this format is typically no greater than 5 meters, while the points illustrated in the site diagram associated with this submittal were collected with a high accuracy GPS unit with sub-meter accuracy. Discrepancies between the site diagram and photo coordinates will exist.

Vegetation Assessment Photo Log

Date Completed - 07/13/2021

Client - **Kerr-McGee Oil & Gas Onshore LP**

Location Name (ID) - **WADDLE-63N67W 24SWNW (336255)**



Photo Point B: North of Disturbance - Facing South



Photo Point C: South of Disturbance - Facing North



Photo Point D: West of Disturbance - Facing East



Photo Point E: East of Disturbance - Facing West

Vegetation Assessment Photo Log

Date Completed - 07/13/2021

Client - **Kerr-McGee Oil & Gas Onshore LP**

Location Name (ID) - **WADDLE-63N67W 24SWNW (336255)**



Photo Point A: Reclaim Area Vegetation - Facing East

Vegetation Assessment Photo Log

Date Completed - 07/13/2021



Client - **Kerr-McGee Oil & Gas Onshore LP**
Location Name (ID) - **WADDLE-63N67W 24SWNW (336255)**



Photo Point F: Reclaim Transect 1 - Facing South



Photo Point G: Reclaim Transect 2 - Facing South



Vegetation Assessment Photo Log

Date Completed - 07/13/2021

Client - **Kerr-McGee Oil & Gas Onshore LP**

Location Name (ID) - **WADDLE-63N67W 24SWNW (336255)**



Photo Point A: Reference Area Vegetation - Facing South

Vegetation Assessment Photo Log

Date Completed - 07/13/2021

Client - **Kerr-McGee Oil & Gas Onshore LP**
Location Name (ID) - **WADDLE-63N67W 24SWNW (336255)**



Photo Point H: Reference Transect 1 - Facing South



Photo Point I: Reference Transect 2 - Facing East

Vegetation Survey (Field Data Table)

Client: Kerr-McGee Oil & Gas Onshore LP
 COGCC Location Name (ID): WADDLE-63N67W 24SWNW (336255)
 Transect ID: Reclaim Transect 1 - Photo Point F
 Transect Length: 218 ft.
 Assessment Date: 7/13/2021
 Inspector: Scott Taylor

Point	Foliar	Species	Basal	Species
1	Grass	<i>Phleum prantense</i>	Grass	<i>Phleum prantense</i>
2	Grass	<i>Phleum prantense</i>	Grass	<i>Phleum prantense</i>
3	Grass	<i>Phleum prantense</i>	Grass	<i>Phleum prantense</i>
4	Forb	<i>Melilotus officinalis</i>	Forb	<i>Melilotus officinalis</i>
5	Grass	<i>Juncus balticus</i>	Grass	<i>Juncus balticus</i>
6	Grass	<i>Phleum prantense</i>	Grass	<i>Phleum prantense</i>
7	Grass	<i>Phleum prantense</i>	Grass	<i>Phleum prantense</i>
8	Grass	<i>Bromus biebersteinii</i>	Grass	<i>Bromus biebersteinii</i>
9	Forb	<i>Melilotus officinalis</i>	Forb	<i>Melilotus officinalis</i>
10	Grass	<i>Phleum prantense</i>	Grass	<i>Phleum prantense</i>
11	Grass	<i>Bromus biebersteinii</i>	Grass	<i>Bromus biebersteinii</i>
12	Grass	<i>Phleum prantense</i>	Grass	<i>Phleum prantense</i>
13	Grass	<i>Juncus balticus</i>	Grass	<i>Juncus balticus</i>
14	N/A	N/A	Forb	<i>Taraxacum officinale</i>
15	Grass	<i>Phleum prantense</i>	Grass	<i>Phleum prantense</i>
16	Grass	<i>Phleum prantense</i>	Grass	<i>Phleum prantense</i>
17	Grass	<i>Juncus balticus</i>	Grass	<i>Juncus balticus</i>
18	Grass	<i>Phleum prantense</i>	Grass	<i>Phleum prantense</i>
19	Forb	<i>Melilotus officinalis</i>	Forb	<i>Melilotus officinalis</i>
20	Grass	<i>Phleum prantense</i>	Grass	<i>Carex filifolia</i>
21	Grass	<i>Phleum prantense</i>	Grass	<i>Carex filifolia</i>
22	Grass	<i>Phleum prantense</i>	Grass	<i>Phleum prantense</i>
23	Grass	<i>Phleum prantense</i>	Grass	<i>Phleum prantense</i>
24	Grass	<i>Juncus balticus</i>	Grass	<i>Juncus balticus</i>
25	N/A	N/A	Non Vegetative	Litter
26	N/A	N/A	Non Vegetative	Litter
27	Grass	<i>Bromus biebersteinii</i>	Grass	<i>Bromus biebersteinii</i>
28	Grass	<i>Carex filifolia</i>	Grass	<i>Carex filifolia</i>
29	Grass	<i>Bromus biebersteinii</i>	Grass	<i>Bromus biebersteinii</i>
30	Grass	<i>Phleum prantense</i>	Grass	<i>Phleum prantense</i>
31	Grass	<i>Bromus biebersteinii</i>	Grass	<i>Bromus biebersteinii</i>
32	Grass	<i>Bromus biebersteinii</i>	Grass	<i>Bromus biebersteinii</i>
33	Grass	<i>Phleum prantense</i>	Grass	<i>Phleum prantense</i>
34	Grass	<i>Bromus biebersteinii</i>	Grass	<i>Bromus biebersteinii</i>
35	Grass	<i>Bromus biebersteinii</i>	Grass	<i>Bromus biebersteinii</i>
36	Forb	<i>Melilotus officinalis</i>	Forb	<i>Melilotus officinalis</i>
37	Grass	<i>Bromus biebersteinii</i>	Grass	<i>Bromus biebersteinii</i>
38	Grass	<i>Phleum prantense</i>	Grass	<i>Phleum prantense</i>
39	Grass	<i>Bromus biebersteinii</i>	Grass	<i>Bromus biebersteinii</i>
40	Forb	<i>Kochia scoparia</i>	Forb	<i>Kochia scoparia</i>
41	Grass	<i>Bromus biebersteinii</i>	Grass	<i>Bromus biebersteinii</i>
42	Forb	<i>Chenopodium album</i>	Grass	<i>Elymus trachycaulus</i>
43	Grass	<i>Bromus biebersteinii</i>	Grass	<i>Bromus biebersteinii</i>
44	Grass	<i>Sporobolus cryptandrus</i>	Grass	<i>Sporobolus cryptandrus</i>
45	Grass	<i>Distichlis spicata</i>	Grass	<i>Distichlis spicata</i>
46	Grass	<i>Distichlis spicata</i>	Grass	<i>Distichlis spicata</i>
47	Forb	<i>Chenopodium album</i>	Grass	<i>Bromus biebersteinii</i>
48	Grass	<i>Critesion jubatum</i>	Grass	<i>Distichlis spicata</i>
49	Grass	<i>Bromus biebersteinii</i>	Grass	<i>Bromus biebersteinii</i>
50	Grass	<i>Distichlis spicata</i>	Grass	<i>Distichlis spicata</i>

Vegetation Survey (Field Data Table)

Client: Kerr-McGee Oil & Gas Onshore LP
 COGCC Location Name (ID): WADDLE-63N67W 24SWNW (336255)
 Transect ID: Reclaim Transect 2 - Photo Point G
 Transect Length: 177 ft.
 Assessment Date: 7/13/2021
 Inspector: Scott Taylor

Point	Foliar	Species	Basal	Species
1	Grass	<i>Bromus bieberrsteinii</i>	Grass	<i>Bromus bieberrsteinii</i>
2	Grass	<i>Phleum prantense</i>	Grass	<i>Phleum prantense</i>
3	Grass	<i>Bromus bieberrsteinii</i>	Grass	<i>Sporobolus cryptandrus</i>
4	Grass	<i>Phleum prantense</i>	Grass	<i>Phleum prantense</i>
5	Grass	<i>Phleum prantense</i>	Grass	<i>Phleum prantense</i>
6	Grass	<i>Carex filifolia</i>	Grass	<i>Carex filifolia</i>
7	Grass	<i>Bromus bieberrsteinii</i>	Grass	<i>Bromus bieberrsteinii</i>
8	Grass	<i>Bromus bieberrsteinii</i>	Grass	<i>Bromus bieberrsteinii</i>
9	Forb	<i>Rumex crispus</i>	Forb	<i>Rumex crispus</i>
10	Grass	<i>Critesion jubatum</i>	Grass	<i>Critesion jubatum</i>
11	Grass	<i>Bromus bieberrsteinii</i>	Grass	<i>Bromus bieberrsteinii</i>
12	N/A	N/A	Forb	<i>Taraxacum officinale</i>
13	Grass	<i>Carex filifolia</i>	Grass	<i>Carex filifolia</i>
14	Grass	<i>Bromus bieberrsteinii</i>	Grass	<i>Bromus bieberrsteinii</i>
15	Forb	<i>Chenopodium album</i>	Forb	<i>Chenopodium album</i>
16	Grass	<i>Bromus bieberrsteinii</i>	Grass	<i>Bromus bieberrsteinii</i>
17	Grass	<i>Juncus balticus</i>	Grass	<i>Juncus balticus</i>
18	Grass	<i>Bromus bieberrsteinii</i>	Grass	<i>Bromus bieberrsteinii</i>
19	Grass	<i>Bromus bieberrsteinii</i>	Grass	<i>Bromus bieberrsteinii</i>
20	Grass	<i>Critesion jubatum</i>	Grass	<i>Critesion jubatum</i>
21	Grass	<i>Bromus bieberrsteinii</i>	Grass	<i>Bromus bieberrsteinii</i>
22	Grass	<i>Bromus bieberrsteinii</i>	Grass	<i>Juncus balticus</i>
23	Grass	<i>Phleum prantense</i>	Grass	<i>Phleum prantense</i>
24	Grass	<i>Bromus bieberrsteinii</i>	Grass	<i>Bromus bieberrsteinii</i>
25	Grass	<i>Bromus bieberrsteinii</i>	Grass	<i>Bromus bieberrsteinii</i>
26	Grass	<i>Critesion jubatum</i>	Grass	<i>Critesion jubatum</i>
27	Grass	<i>Bromus bieberrsteinii</i>	Grass	<i>Bromus bieberrsteinii</i>
28	Forb	<i>Melilotus officinalis</i>	Forb	<i>Melilotus officinalis</i>
29	Grass	<i>Bromus bieberrsteinii</i>	Grass	<i>Bromus bieberrsteinii</i>
30	Grass	<i>Juncus balticus</i>	Grass	<i>Juncus balticus</i>
31	Grass	<i>Bromus bieberrsteinii</i>	Grass	<i>Bromus bieberrsteinii</i>
32	Grass	<i>Bromus bieberrsteinii</i>	Grass	<i>Bromus bieberrsteinii</i>
33	Forb	<i>Melilotus officinalis</i>	Forb	<i>Melilotus officinalis</i>
34	Forb	<i>Melilotus officinalis</i>	Forb	<i>Melilotus officinalis</i>
35	Grass	<i>Bromus bieberrsteinii</i>	Grass	<i>Bromus bieberrsteinii</i>
36	Grass	<i>Phleum prantense</i>	Grass	<i>Phleum prantense</i>
37	Grass	<i>Phleum prantense</i>	Grass	<i>Phleum prantense</i>
38	Grass	<i>Bromus bieberrsteinii</i>	Grass	<i>Carex filifolia</i>
39	Grass	<i>Phleum prantense</i>	Grass	<i>Phleum prantense</i>
40	Forb	<i>Melilotus officinalis</i>	Forb	<i>Melilotus officinalis</i>
41	Grass	<i>Bromus bieberrsteinii</i>	Grass	<i>Bromus bieberrsteinii</i>
42	Grass	<i>Phleum prantense</i>	Grass	<i>Phleum prantense</i>
43	Grass	<i>Phleum prantense</i>	Grass	<i>Phleum prantense</i>
44	Grass	<i>Juncus balticus</i>	Grass	<i>Juncus balticus</i>
45	Grass	<i>Bromus bieberrsteinii</i>	Grass	<i>Bromus bieberrsteinii</i>
46	Forb	<i>Melilotus officinalis</i>	Forb	<i>Melilotus officinalis</i>
47	Grass	<i>Phleum prantense</i>	Grass	<i>Carex filifolia</i>
48	Grass	<i>Bromus bieberrsteinii</i>	Grass	<i>Bromus bieberrsteinii</i>
49	Grass	<i>Phleum prantense</i>	Grass	<i>Phleum prantense</i>
50	Grass	<i>Phleum prantense</i>	Grass	<i>Phleum prantense</i>

Vegetation Survey (Field Data Table)

Client: Kerr-McGee Oil & Gas Onshore LP
 COGCC Location Name (ID): WADDLE-63N67W 24SWNW (336255)
 Transect ID: Reference Transect 1 - Photo Point H
 Transect Length: 328 ft.
 Assessment Date: 7/13/2021
 Inspector: Scott Taylor

Point	Foliar	Species	Basal	Species
1	Grass	<i>Distichlis spicata</i>	Grass	<i>Distichlis spicata</i>
2	Grass	<i>Distichlis spicata</i>	Grass	<i>Distichlis spicata</i>
3	Grass	<i>Distichlis spicata</i>	Grass	<i>Distichlis spicata</i>
4	Grass	<i>Bromus bieberrsteinii</i>	Grass	<i>Distichlis spicata</i>
5	Forb	<i>Melilotus officinalis</i>	Forb	<i>Melilotus officinalis</i>
6	Grass	<i>Bromus bieberrsteinii</i>	Grass	<i>Bromus bieberrsteinii</i>
7	Grass	<i>Bromus bieberrsteinii</i>	Grass	<i>Bromus bieberrsteinii</i>
8	Grass	<i>Phleum prantense</i>	Grass	<i>Phleum prantense</i>
9	Grass	<i>Bromus bieberrsteinii</i>	Grass	<i>Bromus bieberrsteinii</i>
10	Grass	<i>Pascopyrum smithii</i> Agropyron	Grass	<i>Pascopyrum smithii</i> Agropyron
11	Grass	<i>Bromus bieberrsteinii</i>	Grass	<i>Bromus bieberrsteinii</i>
12	Grass	<i>Bromus bieberrsteinii</i>	Grass	<i>Bromus bieberrsteinii</i>
13	Forb	<i>Chenopodium album</i>	Forb	<i>Chenopodium album</i>
14	Grass	<i>Phleum prantense</i>	Grass	<i>Phleum prantense</i>
15	Grass	<i>Bromus bieberrsteinii</i>	Grass	<i>Bromus bieberrsteinii</i>
16	Grass	<i>Bromus bieberrsteinii</i>	Grass	<i>Bromus bieberrsteinii</i>
17	Grass	<i>Bromus bieberrsteinii</i>	Grass	<i>Bromus bieberrsteinii</i>
18	Grass	<i>Phleum prantense</i>	Grass	<i>Phleum prantense</i>
19	Grass	<i>Bromus bieberrsteinii</i>	Grass	<i>Bromus bieberrsteinii</i>
20	Grass	<i>Pascopyrum smithii</i> Agropyron	Non Vegetative	Litter
21	Grass	<i>Bromus bieberrsteinii</i>	Grass	<i>Bromus bieberrsteinii</i>
22	Forb	<i>Melilotus officinalis</i>	Forb	<i>Melilotus officinalis</i>
23	Grass	<i>Bromus bieberrsteinii</i>	Grass	<i>Bromus bieberrsteinii</i>
24	Grass	<i>Bromus bieberrsteinii</i>	Grass	<i>Bromus bieberrsteinii</i>
25	Grass	<i>Juncus balticus</i>	Grass	<i>Juncus balticus</i>
26	Grass	<i>Bromus bieberrsteinii</i>	Grass	<i>Bromus bieberrsteinii</i>
27	Grass	<i>Bromus bieberrsteinii</i>	Grass	<i>Bromus bieberrsteinii</i>
28	Grass	<i>Bromus bieberrsteinii</i>	Grass	<i>Bromus bieberrsteinii</i>
29	Grass	<i>Bromus bieberrsteinii</i>	Grass	<i>Bromus bieberrsteinii</i>
30	Grass	<i>Phleum prantense</i>	Grass	<i>Phleum prantense</i>
31	Grass	<i>Bromus bieberrsteinii</i>	Grass	<i>Bromus bieberrsteinii</i>
32	Grass	<i>Elymus trachycaulus</i>	Grass	<i>Elymus trachycaulus</i>
33	Grass	<i>Bromus bieberrsteinii</i>	Grass	<i>Bromus bieberrsteinii</i>
34	Grass	<i>Juncus balticus</i>	Grass	<i>Juncus balticus</i>
35	Grass	<i>Bromus bieberrsteinii</i>	Grass	<i>Bromus bieberrsteinii</i>
36	Forb	<i>Melilotus officinalis</i>	Forb	<i>Melilotus officinalis</i>
37	Grass	<i>Phleum prantense</i>	Grass	<i>Phleum prantense</i>
38	Grass	<i>Pascopyrum smithii</i> Agropyron	Non Vegetative	Litter
39	Grass	<i>Phleum prantense</i>	Grass	<i>Phleum alpinum</i>
40	Grass	<i>Bromus bieberrsteinii</i>	Grass	<i>Bromus bieberrsteinii</i>
41	Grass	<i>Bromus bieberrsteinii</i>	Grass	<i>Bromus bieberrsteinii</i>
42	Forb	<i>Melilotus officinalis</i>	Forb	<i>Melilotus officinalis</i>
43	Grass	<i>Bromus bieberrsteinii</i>	Grass	<i>Bromus bieberrsteinii</i>
44	Grass	<i>Bromus bieberrsteinii</i>	Grass	<i>Bromus bieberrsteinii</i>
45	Grass	<i>Elymus trachycaulus</i>	Grass	<i>Elymus trachycaulus</i>
46	Grass	<i>Bromus bieberrsteinii</i>	Grass	<i>Bromus bieberrsteinii</i>
47	Grass	<i>Phleum prantense</i>	Grass	<i>Phleum prantense</i>
48	Grass	<i>Bromus bieberrsteinii</i>	Grass	<i>Bromus bieberrsteinii</i>
49	Forb	<i>Melilotus officinalis</i>	Forb	<i>Melilotus officinalis</i>
50	Grass	<i>Bromus bieberrsteinii</i>	Grass	<i>Bromus bieberrsteinii</i>

Vegetation Survey (Field Data Table)

Client: Kerr-McGee Oil & Gas Onshore LP
 COGCC Location Name (ID): WADDLE-63N67W 24SWNW (336255)
 Transect ID: Reference Transect 2 - Photo Point I
 Transect Length: 333 ft.
 Assessment Date: 7/13/2021
 Inspector: Scott Taylor

Point	Foliar	Species	Basal	Species
1	Grass	<i>Bromus bieberrsteinii</i>	Grass	<i>Bromus bieberrsteinii</i>
2	Grass	<i>Bromus bieberrsteinii</i>	Grass	<i>Bromus bieberrsteinii</i>
3	Grass	<i>Bromus bieberrsteinii</i>	Grass	<i>Bromus bieberrsteinii</i>
4	Grass	<i>Bromus bieberrsteinii</i>	Grass	<i>Bromus bieberrsteinii</i>
5	Grass	<i>Phleum prantense</i>	Grass	<i>Phleum prantense</i>
6	Grass	<i>Phleum prantense</i>	Grass	<i>Phleum prantense</i>
7	Grass	<i>Bromus bieberrsteinii</i>	Grass	<i>Bromus bieberrsteinii</i>
8	Forb	<i>Melilotus officinalis</i>	Forb	<i>Melilotus officinalis</i>
9	Grass	<i>Bromus bieberrsteinii</i>	Grass	<i>Bromus bieberrsteinii</i>
10	Grass	<i>Phleum prantense</i>	Grass	<i>Juncus balticus</i>
11	Grass	<i>Bromus bieberrsteinii</i>	Grass	<i>Bromus bieberrsteinii</i>
12	Grass	<i>Bromus bieberrsteinii</i>	Grass	<i>Juncus balticus</i>
13	Forb	<i>Melilotus officinalis</i>	Forb	<i>Melilotus officinalis</i>
14	Grass	<i>Bromus bieberrsteinii</i>	Grass	<i>Bromus bieberrsteinii</i>
15	Grass	<i>Phleum prantense</i>	Grass	<i>Phleum prantense</i>
16	Grass	<i>Bromus bieberrsteinii</i>	Grass	<i>Bromus bieberrsteinii</i>
17	Grass	<i>Bromus bieberrsteinii</i>	Grass	<i>Bromus bieberrsteinii</i>
18	Grass	<i>Elymus trachycaulus</i>	Grass	<i>Elymus trachycaulus</i>
19	Grass	<i>Elymus trachycaulus</i>	Grass	<i>Elymus trachycaulus</i>
20	Grass	<i>Bromus bieberrsteinii</i>	Grass	<i>Bromus bieberrsteinii</i>
21	Grass	<i>Bromus bieberrsteinii</i>	Grass	<i>Bromus bieberrsteinii</i>
22	Grass	<i>Bromus bieberrsteinii</i>	Grass	<i>Bromus bieberrsteinii</i>
23	Forb	<i>Melilotus officinalis</i>	Forb	<i>Melilotus officinalis</i>
24	Grass	<i>Bromus bieberrsteinii</i>	Non Vegetative	Litter
25	Grass	<i>Pascopyrum smithii</i> Agropyron	Grass	<i>Pascopyrum smithii</i> Agropyron
26	Grass	<i>Bromus bieberrsteinii</i>	Grass	<i>Bromus bieberrsteinii</i>
27	Grass	<i>Phleum prantense</i>	Grass	<i>Phleum prantense</i>
28	Grass	<i>Bromus bieberrsteinii</i>	Grass	<i>Bromus bieberrsteinii</i>
29	Grass	<i>Elymus trachycaulus</i>	Grass	<i>Elymus trachycaulus</i>
30	Forb	<i>Chenopodium album</i>	Forb	<i>Chenopodium album</i>
31	Forb	<i>Chenopodium album</i>	Forb	<i>Chenopodium album</i>
32	Grass	<i>Bromus bieberrsteinii</i>	Grass	<i>Bromus bieberrsteinii</i>
33	Grass	<i>Critesion jubatum</i>	Non Vegetative	Litter
34	Grass	<i>Bromus bieberrsteinii</i>	Grass	<i>Bromus bieberrsteinii</i>
35	Forb	<i>Melilotus officinalis</i>	Forb	<i>Melilotus officinalis</i>
36	Grass	<i>Elymus trachycaulus</i>	Grass	<i>Elymus trachycaulus</i>
37	Grass	<i>Bromus bieberrsteinii</i>	Grass	<i>Bromus bieberrsteinii</i>
38	Grass	<i>Bromus bieberrsteinii</i>	Grass	<i>Bromus bieberrsteinii</i>
39	Grass	<i>Bromus bieberrsteinii</i>	Grass	<i>Distichlis spicata</i>
40	Grass	<i>Distichlis spicata</i>	Grass	<i>Distichlis spicata</i>
41	Grass	<i>Juncus balticus</i>	Grass	<i>Juncus balticus</i>
42	Forb	<i>Chenopodium album</i>	Grass	<i>Critesion jubatum</i>
43	Grass	<i>Bromus bieberrsteinii</i>	Grass	<i>Bromus bieberrsteinii</i>
44	Grass	<i>Bromus bieberrsteinii</i>	Grass	<i>Bromus bieberrsteinii</i>
45	Grass	<i>Bromus bieberrsteinii</i>	Grass	<i>Bromus bieberrsteinii</i>
46	Forb	<i>Melilotus officinalis</i>	Forb	<i>Melilotus officinalis</i>
47	Grass	<i>Elymus trachycaulus</i>	Grass	<i>Elymus trachycaulus</i>
48	Grass	<i>Bromus bieberrsteinii</i>	Grass	<i>Bromus bieberrsteinii</i>
49	Grass	<i>Bromus bieberrsteinii</i>	Grass	<i>Bromus bieberrsteinii</i>
50	Grass	<i>Bromus bieberrsteinii</i>	Grass	<i>Bromus bieberrsteinii</i>