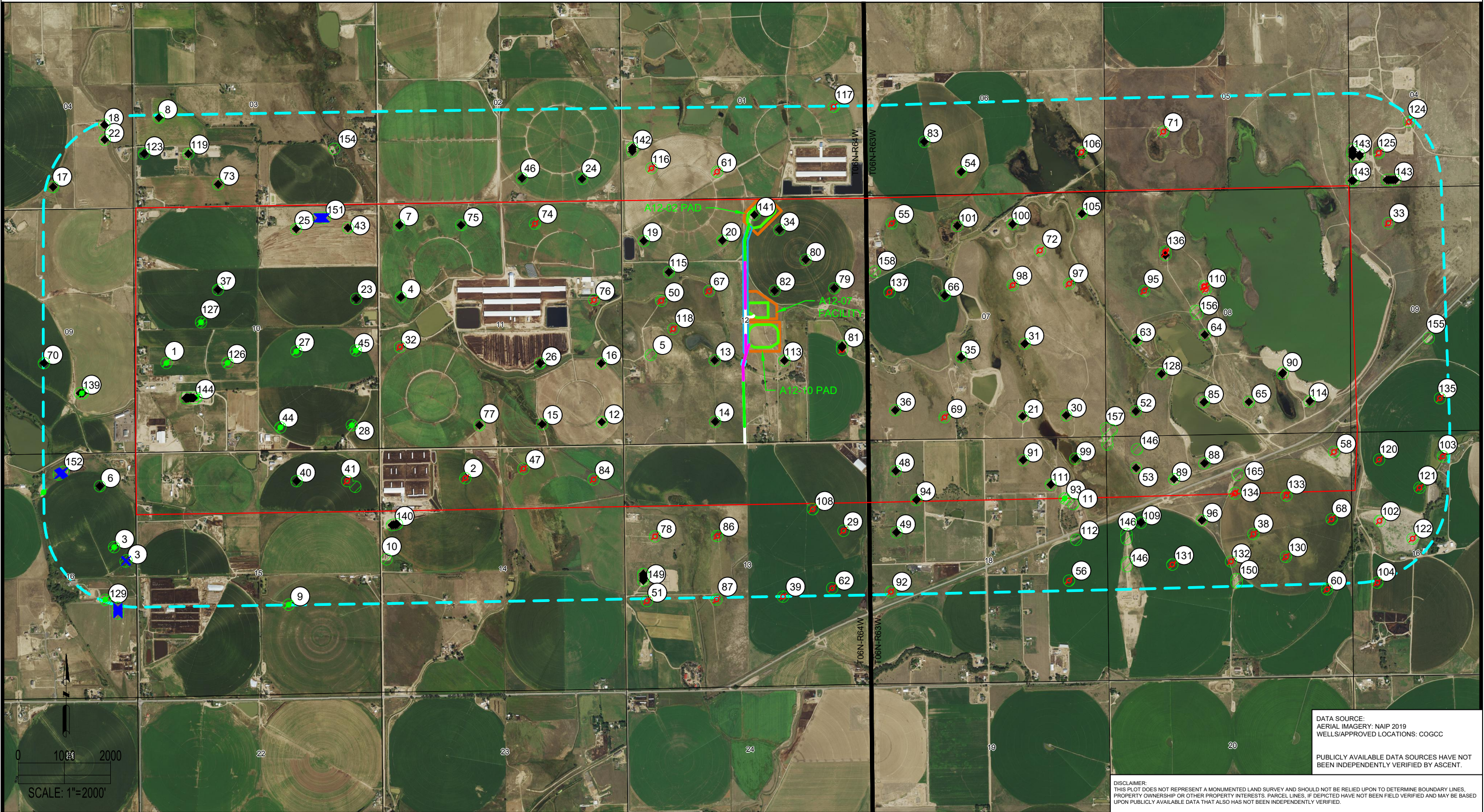


OGDP 2  
RELATED LOCATION & FLOWLINE MAP



FIELD DATE: 05-21-21  
DRAWN BY: JDH

DRAWING DATE: 08-11-21  
CHECKED BY: IJM

SITE NAME: OGD 2  
SURFACE LOCATION: SEC. 12, T6N, R64W, 6TH P.M.  
WELD COUNTY, COLORADO

LEGEND:  
● = PROPOSED WELL  
◆ = EXISTING WELL  
● = PLUGGED & ABANDONED WELL  
⊗ = DRY & ABANDONED WELL

✕ = PERMITTED WELL  
— = SECTION LINE  
— = TOWNSHIP LINE  
— = PROPOSED ACCESS ROAD  
— = PROPOSED CULVERT  
— = EXISTING ACCESS ROAD (TO BE IMPROVED)

— = 2000' RADIUS FROM OGD  
— = WORKING PAD SURFACE  
— = OIL & GAS LOCATION  
— = PROPOSED FLOWLINE CORRIDOR

— = PERMITTED COGCC LOCATION

PREPARED FOR:  
**noble energy**

DATA SOURCE:  
AERIAL IMAGERY: NAIP 2019  
WELLS/APPROVED LOCATIONS: COGCC  
  
PUBLICLY AVAILABLE DATA SOURCES HAVE NOT BEEN INDEPENDENTLY VERIFIED BY ASCENT.

DISCLAIMER:  
THIS PLOT DOES NOT REPRESENT A MONUMENTED LAND SURVEY AND SHOULD NOT BE RELIED UPON TO DETERMINE BOUNDARY LINES, PROPERTY OWNERSHIP OR OTHER PROPERTY INTERESTS. PARCEL LINES, IF DEPICTED HAVE NOT BEEN FIELD VERIFIED AND MAY BE BASED UPON PUBLICLY AVAILABLE DATA THAT ALSO HAS NOT BEEN INDEPENDENTLY VERIFIED.

PLAT: P:\W08\_B210013\PROD\2A\OGDP 1 06N4W12 RELATED LOCATION & FLOWLINE MAP LAYOUT TAB: Overview

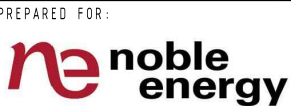
OGDP 2  
RELATED LOCATION & FLOWLINE MAP

Map Number	Location ID	Location Name	Location Status	Operator
1	322948	HEIDENREICH, OLIVER-FA-66N64W /10NWSW	AC	PDC ENERGY INC
2	323413	RAY-GLO-66N64W /14NENW	AC	NOBLE ENERGY INC
3	327061	Kerbs /6N64W16W	AC	NOBLE ENERGY INC
4	329659	COCKROFT-66N64W /11SWNW	AC	NOBLE ENERGY INC
5	409882	RADY /12-32	AC	NOBLE ENERGY INC
6	331482	STATE 81-66N64W /16NENE	AC	PDC ENERGY INC
7	331946	COCKROFT-66N64W /11NWNW	AC	NOBLE ENERGY INC
8	331956	EGGE-66N64W /3NWSW	AC	NOBLE ENERGY INC
9	332027	KERBS-66N64W /15NWSE	AC	PDC ENERGY INC
10	425771	RAYGLO /A14-67-1HN TANK	AC	N/A
11	443273	NGL Apollo /11	AC	NGL WATER SOLUTIONS DJ LLC
12	332161	COCKROFT-66N64W /11SESE	AC	PDC ENERGY INC
13	332431	SCHRANT-66N64W /12NESW	AC	PDC ENERGY INC
14	332432	SCHRANT-66N64W /12SESW	AC	PDC ENERGY INC
15	332471	COCKROFT-66N64W /11SWSE	AC	PDC ENERGY INC
16	332472	COCKROFT-66N64W /11NESE	AC	PDC ENERGY INC
17	332475	ERICKSON-66N64W /4SWSE	AC	PDC ENERGY INC
18	332483	LAWLEY-66N64W /4NESE	AC	PDC ENERGY INC
19	332493	CECIL-66N64W /12NWNW	AC	PDC ENERGY INC
20	332494	CECIL-66N64W /12NENW	AC	PDC ENERGY INC
21	332503	CHRISTIANSEN-66N63W /7SWSE	AC	PDC ENERGY INC
22	305085	LAWLEY-66N64W /4NESE	AC	PDC ENERGY INC
23	305152	WOLFRUM-66N64W /10SENE	AC	PDC ENERGY INC
24	305154	PETTINGER-66N64W /2SESE	AC	PDC ENERGY INC
25	305172	ADAMS-66N64W /10NWNE	AC	PDC ENERGY INC
26	305195	COCKROFT-66N64W /11NWSE	AC	PDC ENERGY INC
27	305198	PHINNEY-66N64W /10NWSE	AC	PDC ENERGY INC
28	305261	PHINNEY-66N64W /10SESE	AC	PDC ENERGY INC
29	305308	FOSS-66N64W /13SENE	AC	NOBLE ENERGY INC
30	305435	TRINITY-66N63W /7SESE	AC	PDC ENERGY INC
31	305448	TRINITY-66N63W /7NWSE	AC	PDC ENERGY INC
32	305483	COCKROFT-66N64W /11NWSW	AC	NOBLE ENERGY INC
33	305531	GIBSON-66N63W /9NWNW	AC	NOBLE ENERGY INC
34	305631	STORER A-66N64W /12NWNE	AC	NOBLE ENERGY INC
35	305700	TRINITY-66N63W /7NESW	AC	PDC ENERGY INC
36	305709	JOHNSTON-66N63W /7SWSW	AC	PDC ENERGY INC
37	305756	FOSS-66N64W /10SENW	AC	BAYSWATER EXPLORATION & PRODUCTION LLC
38	305758	BASHOR-66N63W /17SWNE	AC	NOBLE ENERGY INC
39	305818	TRUMP A-66N64W /13NWSE	AC	NOBLE ENERGY INC
40	305831	SPEICHER-66N64W /15NWNE	AC	NOBLE ENERGY INC
41	305832	SPEICHER-66N64W /15NENE	AC	NOBLE ENERGY INC
42	409882	RADY /12-32	AC	NOBLE ENERGY INC
43	305857	ADAMS-66N64W /10NENE	AC	PDC ENERGY INC
44	305858	PHINNEY-66N64W /10SWSE	AC	PDC ENERGY INC
45	305859	PHINNEY-66N64W /10NESE	AC	PDC ENERGY INC
46	305860	PETTINGER-66N64W /2SWSE	AC	PDC ENERGY INC
47	305974	MCKENNEY-66N64W /14NWNE	AC	NOBLE ENERGY INC
48	305990	EDENS-66N63W /18NWNW	AC	GREAT WESTERN OPERATING COMPANY LLC
49	305991	EDENS-66N63W /18SWNW	AC	GREAT WESTERN OPERATING COMPANY LLC
50	306006	RADY-66N64W /12SWNW	AC	NOBLE ENERGY INC
51	306184	LAPP-66N64W /13NWSW	AC	NOBLE ENERGY INC
52	306191	CORNISH-66N63W /8SWSW	AC	GREAT WESTERN OPERATING COMPANY LLC
53	306192	CORNISH-66N63W /17NWNW	AC	GREAT WESTERN OPERATING COMPANY LLC
54	306244	FOSS /6-34	AC	NOBLE ENERGY INC

Map Number	Location ID	Location Name	Location Status	Operator
55	306249	HAGEMEISTER USX AA-66N63W /7NWNW	AC	NOBLE ENERGY INC
56	306252	PEPLER-66N63W /18NESE	AC	NOBLE ENERGY INC
58	306261	BASHOR-66N63W /17NENE	AC	NOBLE ENERGY INC
60	306264	BASHOR-66N63W /17NESE	AC	NOBLE ENERGY INC
61	306275	CECIL USX A-66N64W /1SESW	AC	NOBLE ENERGY INC
62	306306	TRUMP A-66N64W /13NESE	AC	NOBLE ENERGY INC
63	306310	New Cache FH NWSW Pad /8-33D	AC	GREAT WESTERN OPERATING COMPANY LLC
64	306311	CACHE-66N63W /8NESW	AC	GREAT WESTERN OPERATING COMPANY LLC
65	306312	CACHE-66N63W /8SWSE	AC	GREAT WESTERN OPERATING COMPANY LLC
66	306326	HAGEMEISTER USX AA-66N63W /7SENW	AC	NOBLE ENERGY INC
67	306332	RADY-66N64W /12SENW	AC	NOBLE ENERGY INC
68	306333	BASHOR-66N63W /17SENE	AC	NOBLE ENERGY INC
69	306346	TAYLOR USX AA-66N63W /7SESW	AC	NOBLE ENERGY INC
70	306349	HOWARD USX A-66N64W /9NWSE	AC	NOBLE ENERGY INC
71	306382	FOSS - USX AA-66N63W /5SWSW	AC	NOBLE ENERGY INC
72	306405	TRINITY-USX AA-66N63W /7NWNE	AC	NOBLE ENERGY INC
73	306406	VALCAR-USX A-66N64W /3SESW	AC	NOBLE ENERGY INC
74	306461	COCKROFT USX A-66N64W /11NWNE	AC	NOBLE ENERGY INC
75	306462	COCKROFT USX A-66N64W /11NENW	AC	NOBLE ENERGY INC
76	333034	COCKROFT USX A-66N64W /11SENE	AC	NOBLE ENERGY INC
77	306463	COCKROFT USX A-66N64W /11SESW	AC	NOBLE ENERGY INC
78	409993	LAPP-66N64W /13SWNW	AC	NOBLE ENERGY INC
79	306584	SHOEMAKER A-66N64W /12SENE	AC	NOBLE ENERGY INC
80	306585	SHOEMAKER A-66N64W /12SENE	AC	NOBLE ENERGY INC
81	306586	Shoemaker /AA07-65HN Multi	AC	NOBLE ENERGY INC
82	306587	SHOEMAKER A-66N64W /12SWNE	AC	NOBLE ENERGY INC
83	306706	FOSS /6-35	AC	NOBLE ENERGY INC
84	309725	MCKENNEY-66N64W /14NENE	AC	NOBLE ENERGY INC
85	309823	CACHE-66N63W /8SESW	AC	GREAT WESTERN OPERATING COMPANY LLC
86	309826	LAPP-66N64W /13SENW	AC	NOBLE ENERGY INC
87	309834	LAPP-66N64W /13NESW	AC	NOBLE ENERGY INC
88	309842	CACHE-66N63W /17NENW	AC	GREAT WESTERN OPERATING COMPANY LLC
89	309865	CACHE-66N63W /17NENW	AC	GREAT WESTERN OPERATING COMPANY LLC
90	309871	NEW CACHE /8-43	AC	GREAT WESTERN OPERATING COMPANY LLC
91	309961	WILSON-66N63W /18NWNE	AC	NOBLE ENERGY INC
92	309963	DONOH0-66N63W /18NWSW	AC	NOBLE ENERGY INC
93	309984	NGL Apollo Facility /	AC	PDC ENERGY INC
94	310020	EDENS-66N63W /18NWNW	AC	GREAT WESTERN OPERATING COMPANY LLC
95	310028	NEW CACHE-66N63W /8SWNW	AC	NOBLE ENERGY INC
96	310057	PEPLER-66N63W /17SENW	AC	GREAT WESTERN OPERATING COMPANY LLC
97	310168	TRINITY-USX AA-66N63W /7SENE	AC	NOBLE ENERGY INC
98	310169	TRINITY-USX AA-66N63W /7SWNE	AC	NOBLE ENERGY INC
99	310206	APOLLO-66N63W /18NENE	AC	PDC ENERGY INC
100	310220	HAGEMEISTER - USX AA-66N63W /7NWNE	AC	NOBLE ENERGY INC
101	310221	HAGERMEISTER - USX AA-66N63W /7NENW	AC	NOBLE ENERGY INC
102	310238	BASHOR STATE AA-66N63W /16SWNW	AC	NOBLE ENERGY INC
103	310241	BASHOR STATE AA-66N63W /16NENW	AC	NOBLE ENERGY INC
104	310243	BASHOR STATE AA-66N63W /16NWSW	AC	NOBLE ENERGY INC
105	310308	HAGEMEISER-USX AA-66N63W /7NENE	AC	NOBLE ENERGY INC
106	310482	HAGEMIESTER-66N63W /6SESE	AC	NOBLE ENERGY INC
108	310603	FOSS-66N64W /13SENE	AC	NOBLE ENERGY INC
109	310651	PEPLER-66N63W /17SWNW	AC	GREAT WESTERN OPERATING COMPANY LLC
110	332986	NCLP PC AA /08-07D	AC	NOBLE ENERGY INC
111	310793	WILSON-66N63W /18NENE	AC	NOBLE ENERGY INC



FIELD DATE: 05-21-21	DRAWING DATE: 08-11-21	SITE NAME: OGDP 2
DRAWN BY: JDH	CHECKED BY: IJM	SURFACE LOCATION: SEC. 12, T6N, R64W, 6TH P.M. WELD COUNTY, COLORADO



OGDP 2  
RELATED LOCATION & FLOWLINE MAP

Map Number	Location ID	Location Name	Location Status	Operator
112	422931	Peppler PC AA /18-23 Tank	AC	N/A
113	310829	LAPP-66N64W /12NWSE	AC	PDC ENERGY INC
114	310877	New Cache FH SESE PAD /8-40D	AC	GREAT WESTERN OPERATING COMPANY LLC
115	302302	PEPERZAK-66N64W /12SWNW	AC	NOBLE ENERGY INC
116	302411	CECIL USX A-66N64W /1SWSW	AC	NOBLE ENERGY INC
117	302414	CECIL USX A-66N64W /1NESE	AC	NOBLE ENERGY INC
118	302427	RADY-66N64W /12NWSW	AC	NOBLE ENERGY INC
119	302490	RODRIGUEZ-66N64W /3SWSW	AC	NOBLE ENERGY INC
120	302508	BASHOR STATE AA-66N63W /16NWNW	AC	NOBLE ENERGY INC
121	302516	BASHOR STATE AA-66N63W /16NENW	AC	NOBLE ENERGY INC
122	302522	BASHOR STATE AA-66N63W /16SENW	AC	NOBLE ENERGY INC
123	302525	RODRIGUEZ-66N64W /3SWSW	AC	NOBLE ENERGY INC
124	302627	NCLP PC /AA04-25	AC	NOBLE ENERGY INC
125	302628	NCLP PC /AA04-13	AC	NOBLE ENERGY INC
126	302740	HEIDENREICH-66N64W /10NESW	AC	PDC ENERGY INC
127	302776	FOSS /10-2-21	AC	BAYSWATER EXPLORATION & PRODUCTION LLC
128	419186	CORNISH /8-53	AC	GREAT WESTERN OPERATING COMPANY LLC
129	326994	Johnson /6N64W16D	AC	NOBLE ENERGY INC
130	419449	BASHOR PC /AA17-22	AC	NOBLE ENERGY INC
131	419494	PEPPLER PC /AA17-20	AC	NOBLE ENERGY INC
132	419566	BASHOR PC /AA17-21	AC	NOBLE ENERGY INC
133	419808	BASHOR PC AA /17-17	AC	NOBLE ENERGY INC
134	419804	BASHOR PC AA /17-18	AC	NOBLE ENERGY INC
135	420225	BASHOR PC AA /09-14	AC	NOBLE ENERGY INC
136	420423	NCLP PC AA /08-19	AC	NOBLE ENERGY INC
137	421693	HAGEMEISTER USX AA /07-05	AC	NOBLE ENERGY INC
138	422935	Peppler PC AA /18-23 Pad	AC	NOBLE ENERGY INC
139	423191	Howard USX /A09-23 Multi	AC	NOBLE ENERGY INC
140	425767	RAYGLO /A14-67-1HN	AC	NOBLE ENERGY INC
141	426055	SHOEMAKER PC A /12-69HN	AC	NOBLE ENERGY INC
142	426361	Cecil USX A /01-64-1HN Multi	AC	NOBLE ENERGY INC
143	432592	NCLP /AA06-63-1HNB Pd	AC	NOBLE ENERGY INC
144	432784	Albrighton /10-P Pad	AC	PDC ENERGY INC
145	440421	Colt /A13-689 Pad	AC	NOBLE ENERGY INC
146	440421	Colt /A13-689 Pad	AC	NOBLE ENERGY INC
147	443273	NGL Apollo /11	AC	NGL WATER SOLUTIONS DJ LLC
165	419806	BASHOR PC AA /17-02 TANK	AC	N/A
149	444930	Lapp /A15-655 Multi	AC	NOBLE ENERGY INC
150	419497	BASHOR PC /AA17-21 TANK	AC	N/A
151	422955	Adams /6N64W10R	AC	NOBLE ENERGY INC
152	326996	KD /6N64W16R	AC	NOBLE ENERGY INC
153	419804	BASHOR PC AA /17-18	AC	NOBLE ENERGY INC
154	424439	Orr USX /A03-15D Tank	AC	N/A
155	420292	BASHOR PC AA /09-14 TANK	AC	N/A
156	420400	NCLP PC AA /08-02D TANK	AC	N/A
157	437140	Cornish Off-site Tank Battery /08-399HN	AC	N/A
158	421692	HAGEMEISTER USX AA /07-05 TANK	AC	N/A