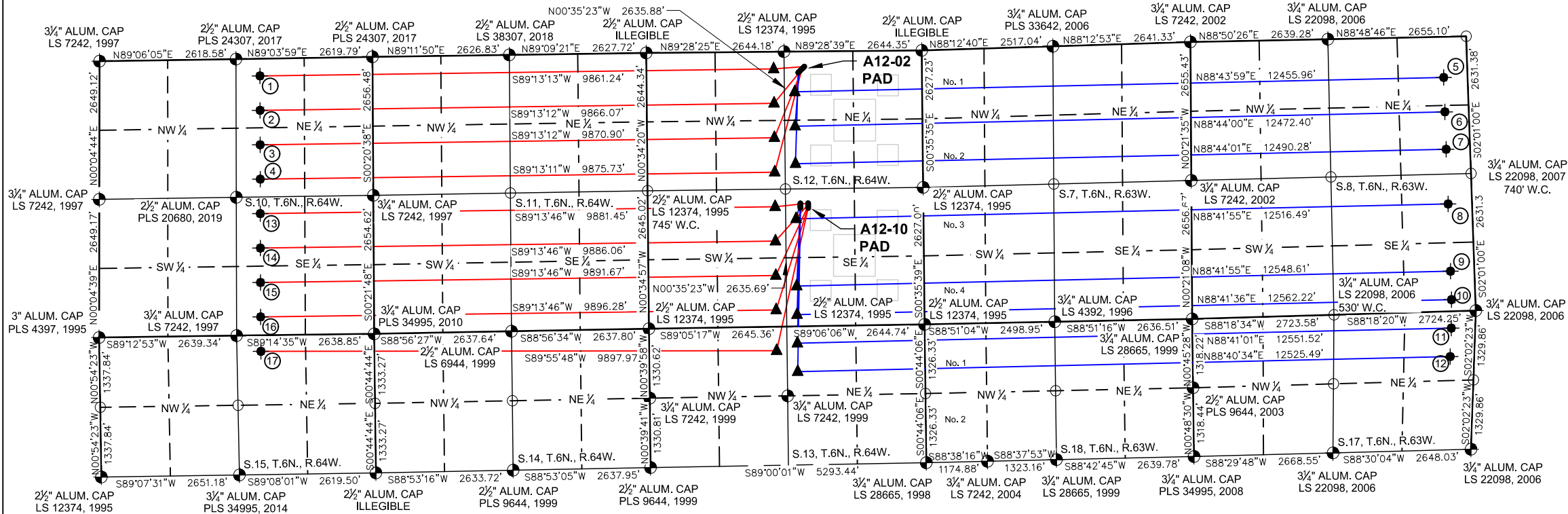
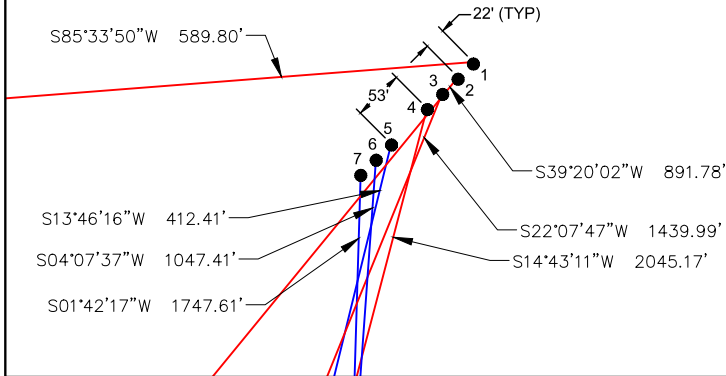


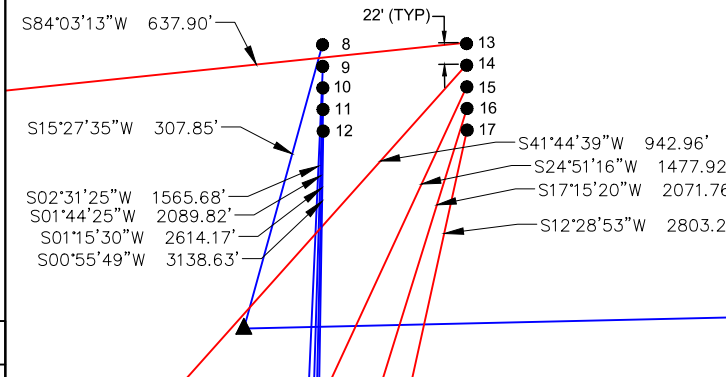
A12-02 PAD & A12-10 PAD  
DIRECTIONAL WELL PLAT  
T6N R64W SECTION 12



PROPOSED WELLBORE DIRECTION DATA  
A12-02 PAD  
SLOTS 1-7



PROPOSED WELLBORE DIRECTION DATA  
A12-10 PAD  
SLOTS 8-17



SURFACE HOLE LOCATION								TOP OF PRODUCTIVE ZONE		BOTTOM HOLE LOCATION	
SLOT	WELL NAME	LATITUDE	LONGITUDE	FOOTAGE		QTR-QTR	ELEV.	FOOTAGE		FOOTAGE	
1	GABEL A10-685	40.50724°N	104.49691°W	290' FNL	2256' FEL	NWNE	4724'	330' FNL	2444' FWL	331' FNL	2161' FEL
2	GABEL A10-675	40.50720°N	104.49697°W	305' FNL	2272' FEL	NWNE	4723'	990' FNL	2444' FWL	991' FNL	2163' FEL
3	GABEL A10-665	40.50716°N	104.49702°W	321' FNL	2288' FEL	NWNE	4722'	1650' FNL	2445' FWL	1651' FNL	2165' FEL
4	GABEL A10-655	40.50711°N	104.49708°W	337' FNL	2304' FEL	NWNE	4721'	2310' FNL	2445' FWL	2311' FNL	2167' FEL
5	GABEL A12-678	40.50701°N	104.49722°W	373' FNL	2342' FEL	NWNE	4721'	773' FNL	2444' FEL	780' FNL	460' FEL
6	GABEL A12-668	40.50697°N	104.49728°W	389' FNL	2358' FEL	NWNE	4720'	1433' FNL	2444' FEL	1440' FNL	460' FEL
7	GABEL A12-657	40.50693°N	104.49733°W	405' FNL	2374' FEL	NWNE	4720'	2151' FNL	2444' FEL	2158' FNL	460' FEL
8	GABEL A12-641	40.50005°N	104.49729°W	2358' FSL	2359' FEL	NWSE	4718'	2063' FSL	2445' FEL	2060' FSL	460' FEL
9	GABEL A12-622	40.49999°N	104.49729°W	2336' FSL	2359' FEL	NWSE	4717'	773' FSL	2445' FEL	770' FSL	460' FEL
10	GABEL A12-613	40.49992°N	104.49729°W	2313' FSL	2360' FEL	NWSE	4717'	226' FSL	2445' FEL	224' FSL	460' FEL
11	GABEL A13-685	40.49986°N	104.49729°W	2291' FSL	2360' FEL	NWSE	4715'	321' FNL	2445' FEL	321' FNL	460' FEL
12	GABEL A13-677	40.49980°N	104.49729°W	2268' FSL	2360' FEL	NWSE	4714'	869' FNL	2445' FEL	866' FNL	460' FEL
13	GABEL A10-645	40.50005°N	104.49675°W	2357' FSL	2209' FEL	NWSE	4715'	2301' FSL	2445' FWL	2333' FSL	2170' FEL
14	GABEL A10-635	40.49998°N	104.49675°W	2335' FSL	2209' FEL	NWSE	4716'	1641' FSL	2445' FWL	1673' FSL	2172' FEL
15	GABEL A10-625	40.49992°N	104.49675°W	2312' FSL	2210' FEL	NWSE	4716'	981' FSL	2445' FWL	1013' FSL	2175' FEL
16	GABEL A10-615	40.49986°N	104.49675°W	2290' FSL	2210' FEL	NWSE	4716'	321' FSL	2445' FWL	353' FSL	2177' FEL
17	GABEL A15-685	40.49980°N	104.49675°W	2267' FSL	2210' FEL	NWSE	4715'	460' FNL	2446' FWL	307' FNL	2177' FEL

012502500  
SCALE: 1"= 2500'

LEGEND

●

 = FOUND MONUMENT

○

 = CALCULATED POSITION

●

 = PROPOSED WELL

◆

 = BOTTOM HOLE

▲

 = TOP OF PRODUCTIVE ZONE

Notes:  
1) All bearings are Grid Bearings of the Colorado State Plane Coordinate System, North Zone, North American Datum 1983/2011. The lineal dimensions as shown herein are grid distances based upon the "U.S. Survey Foot." To get ground distances multiply shown distance by 1.000256.  
2) Distances are measured at 90° from section line of the Sixth Principal Meridian, County of Weld, State of Colorado.  
3) Ground elevations are based on an observed GPS elevation (NAVD 1988 DATUM).  
4) Surface use: A12-02 PAD "IRRIGATED CROP", A12-10 PAD "RANGELAND"  
5) Instrument Operator: ELIOT KERSHNER  
6) This map does not represent a boundary survey.