

OPERATOR: K.P. Kauffman Compnay Inc.

WELL: UPRR 43 Pan Am I #27

FIELD: Wattenberg

API # 05-123-09913

LEASE #:

UIC #:

CNTY: Weld

STATE: CO

SPUD: 2/20/1980

COMP: 3/21/1981

STATUS: PR

WBD DATE: 2/28/2022

FTG:

Q-Q: NWSW

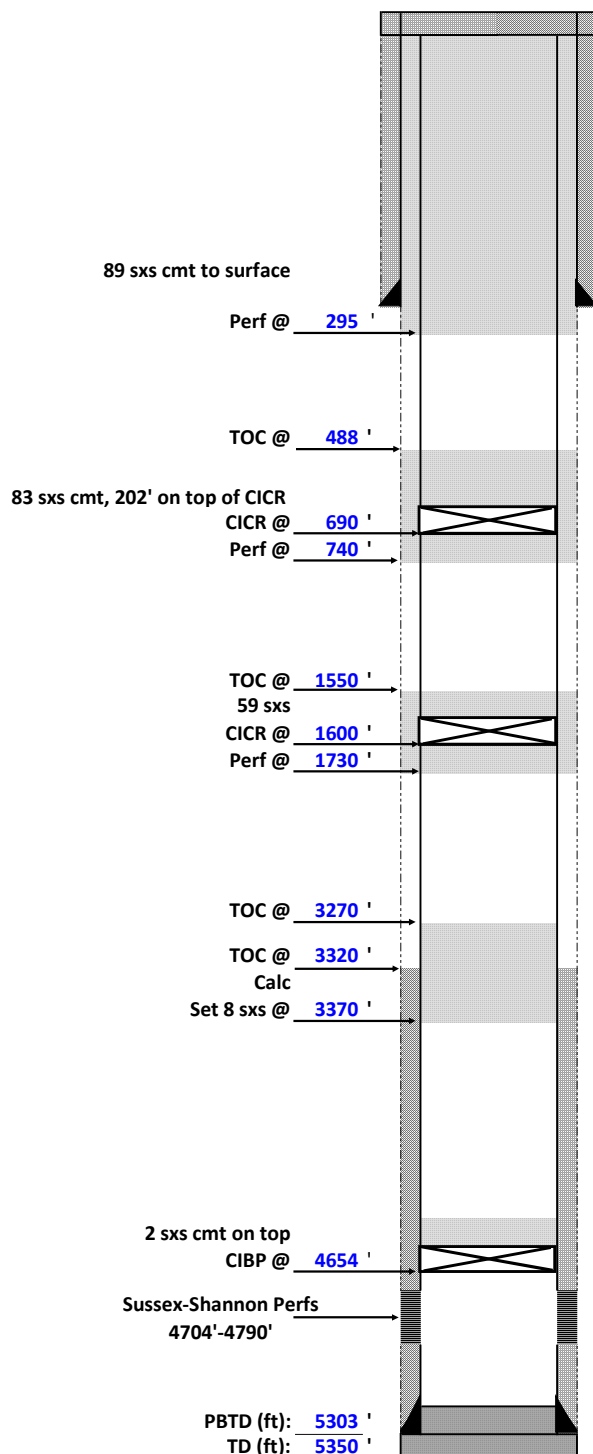
SEC.: 10

TWS: 1N

RGE: 68W

BY:

## PROPOSED WELLBORE DIAGRAM



### CASING RECORD

HOLE (in)	SIZE (in)	WT (lb/ft)	GRADE	TOP (ft)	BTM (ft)
<u>12 1/4</u>	<u>8 5/8</u>	<u>24</u>	<u>J-55</u>	<u>0</u>	<u>245</u>
<u>7 7/8</u>	<u>4 1/2</u>	<u>10.5</u>	<u>J-55</u>	<u>0</u>	<u>5340</u>

### TUBING RECORD

SIZE (in)	WT (lb/ft)	GRADE	TOP (ft)	TALLY (ft)	JTS

### PERFORATION RECORD

ZONE	TOP (ft)	BTM (ft)	HOLES
<u>SX-SN</u>	<u>4704</u>	<u>4790</u>	<u>148</u>

### WELLWORK HISTORY

#### Shannon

78120 gal cond x 37800 gal water, 192000# 20/40 sand,  
36000# 10/20 sand, flush w/ 3486 gal water

#### Sussex

78540 gal cond x 38220 gal water, 192000# 20/40 sand,  
flush x 3528 gal water