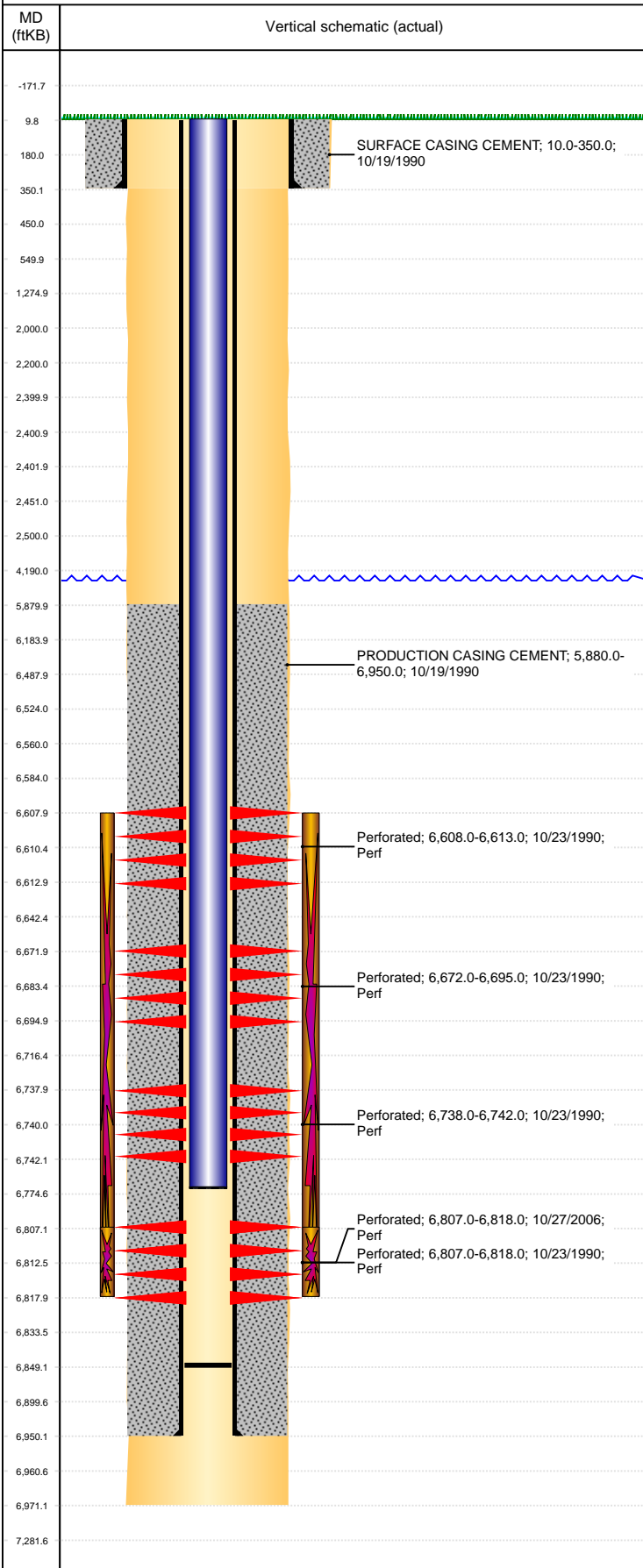


Well Name: UNI UPR C25-06

VERTICAL, ORIGINAL HOLE, 2/28/2022 2:00:34 PM



Well Header									
API 05-123-14782		Business Unit DJ BASIN			District 15		Well Config VERTICAL		
KB - GL / MSL (ft... 10.00		Spud Date 10/15/1990		P & A Date		Well Production Status PR			SoRT No
Comment									
Surface Location (Congressional)									
Qtr 3 SE	Qtr 4 NW	Section 25	Twnshp 4	Twnsh... N	Range 64	Rng E/... W	Actual Latitude (°) 40.28547287		Actual Longitude (°) -104.50159394
Wellbore Sections									
Section Des			Size (in)			Act Top, MD (ftKB)		Act Btm, MD (ftKB)	
SURFACE			12 1/4			10		350	
PRODUCTION			7 7/8			350		6,971	
Casing Strings									
Csg Des			Run Date		OD (in)	Wt/Len (lb/ft)	Grade	Top, MD (ftKB)	MD (ftKB)
Surface			10/19/1990		8 5/8	24.00		10.0	350.0
Production			10/19/1990		2 7/8	6.50	N-80	10.0	6,950.0
Cement									
Des					Start Date		Top (ftKB)		Btm (ftKB)
SURFACE CASING CEMENT					10/19/1990		10.0		350.0
PRODUCTION CASING CEMENT					10/19/1990		5,880.0		6,950.0
Zone Statuses									
Zone Name	Status Date	Status	Fluid Type	Job				Prod Method	
CODELL	11/14/1990	PR	Gas	DRILLING/COMPLETION - ORIGINAL, 10/15/199...					
NIOBRARA	11/14/1990	PR	Gas	DRILLING/COMPLETION - ORIGINAL, 10/15/199...					
NIOBRARA-CO...	11/14/1990	PR	Gas	DRILLING/COMPLETION - ORIGINAL, 10/15/199...					
Perforation Data									
Linked Zone		Bnch/Stg	Entered Shot Total	Top (ftKB)		Btm (ftKB)		Date	
NIOBRARA, ORIGINAL HOLE		A	6	6,608.00		6,613.00		10/23/1990	
NIOBRARA, ORIGINAL HOLE		B	12	6,672.00		6,695.00		10/23/1990	
NIOBRARA, ORIGINAL HOLE		C	6	6,738.00		6,742.00		10/23/1990	
CODELL, ORIGINAL HOLE			44	6,807.00		6,818.00		10/27/2006	
CODELL, ORIGINAL HOLE			24	6,807.00		6,818.00		10/23/1990	
Stimulation Intervals									
Zone				Start Date		Top (ftKB)		Btm (ftKB)	
NIOBRARA-CODELL, ORIGINAL HOLE				11/8/1990		6,608.0		6,818.0	
CODELL, ORIGINAL HOLE				11/6/2006		6,807.0		6,818.0	
Other In Hole									
Run Date	Des				Make	OD (in)	Top (ftKB)	Btm (ftKB)	
Logs									
Date		Type				Top, MD (ftKB)		Btm, MD (ftKB)	
10/18/1990		Compensated Density				6,140.0		6,968.0	
10/23/1990		CBL/CCL/GR				5,800.0		6,964.0	
Plug Back Total Depths									
Date		Type		Com					Depth (ftKB)
10/19/1990		GUIDE SHOE							6,925.0
12/29/2008		FILL							6,849.0