



Bonanza Creek Energy

SURFACE POST JOB REPORT

STATE PRONGHORN FEDERAL D14-X44-30HNB 05-123-51319
S:30 T:5N R:61W Weld CO

CallSheet #: 78792
Proposal #: 55636



SURFACE Post Job Report

Attention: Adam Conry | aconry@bonanzacrk.com

Bonanza Creek Energy

410 17TH STREET SUITE 1400 | DENVER, CO 80202

Dear Adam Conry,

Thank you for the opportunity to provide cementing services on this well. American Cementing strives to achieve complete customer satisfaction. If you have any questions regarding the services or data provided, please contact American Cementing at any time.

Sincerely,

Nick Stille

Cement SME | (307) 286-0815 | nick.stille@americacementing.com

Field Office

1716 E Allison Rd, Cheyenne, WY 82007

Phone: (307) 414-0049

Job Details & Summary

Geometry

Type	Function	OD (in)	ID (in)	Weight (lb/ft)	Thread	Top (ft)	Bottom (ft)	Excess (%)
Open Hole	Outer	n/a	13.5	n/a	n/a	0	1615	50
Casing	Inner	9.625	9.001	32.3	n/a	0	1604	0

Equipment / People

Unit Type	Unit	Power Unit	Employee #1
AS Cement Trailer Float	CTF-021	TRC(TRB)-041	Clark, Cody
AS Cement Trailer Float	CTF(FUF)-308	TRC(TRB)-420	Allen, Jared
Cement Pump Float	CPF-184	TRS-109	Webster, Jazmyn
Light Duty Vehicles	LDV-048		Fuentes, Orlando
Field Storage Silo	FSS(CTS)-450		

Timing

Event	Date/Time
Call Out	10/20/2021 18:00
Depart Facility	10/20/2021 20:00
On Location	10/20/2021 22:00
Rig Up Iron	10/20/2021 22:30
Job Started	10/20/2021 23:55
Job Completed	10/21/2021 01:18
Rig Down Iron	10/21/2021 01:30
Depart Location	10/21/2021 02:30

General Job Information

Metrics	Value
Well Fluid Density	9 lb/gal
Well Fluid Type	WBM
Rig Circulation Vol	400 bbls
Rig Circulation Time	1 hours
Calculated Displacement	120.66 bbls
Actual Displacement	120 bbls
Total Spacer to Surface	20 bbls
Total CMT to Surface	45 bbls
Well Topped Out	No

Casing Equipment

Type	Description	Qty
CENTRALIZER,9-5/8"NON-WELD	Bow spring	15

Job Details

Metrics	Value
Flare Prior to Job	No
Flare During Job	No
Flare at End of Job	No
Well Full Prior to Job	Yes
Well Fluid Density Into Well	9 lb/gal
Well Fluid Density Out of Well	9 lb/gal

Job Details (cont.)

Metrics	Value
BHCT	86 °F
BHST	110 °F

Water Analysis

Metrics	Value	Recommended
Water Source	Flat Tank	
Temperature	60 °F	50-80 °F
pH Level	7	5.5-8.5
Chlorides	0 mg/L	0-3000 mg/L
Total Alkalinity	240	0-1000
Total Hardness	0 mg/L	0-500 mg/L
Carbonates	. mg/L	0-100 mg/L
Sulfates	>200 mg/L	0-1500 mg/L
Potassium	0 mg/L	0-3000 mg/L
Iron	0 mg/L	0-300 mg/L

Circulation

Lost Circulation Experienced	Losses into Spacer	Losses into Cement	Losses into Displacement
No	No	No	No

**Job Execution Information**

Fluid	Product	Function	Density (lb/gal)	Yield (ft ³ /sk)	Water Rq. (gal/sk)	Water Rq. (gal/bbl)	Volume (sks)	Volume (bbl)	Designed Top (ft)
1	Fresh Water	Flush	8.34			42.00		20.00	0
2	ACem S100.3.XC	Primary	14.50	1.39	6.81		858.00	212.46	0
3	Fresh Water	DisplacementFinal	8.34			42.00		120.00	0

Job Fluid Details

Fluid	Type	Fluid	Product	Function	Conc.	Uom
2	Primary	ACem S100.3.XC	ASTM TYPE III	Cement	100.00	%
2	Primary	ACem S100.3.XC	STATIC FREE	Other	0.01	lb/sk

Job Logs

Line	Event	Date (MM/DD/YY)	Time (HH:MM)	Density (lb/gal)	Pump Rate (bpm)	Pump Volume (bbls)	Pipe Pressure (psi)	Comment
1	Call Out	10/20/2021	18:00					ACC gets called out , requested time on location was 00:00 hrs 10/21/21
2	Depart Facility	10/20/2021	20:00					ACC departs facility
3	Arrive To Location	10/20/2021	22:00					ACC arrives to location rig is currently POOH and getting ready to run casing
4	Rig Up	10/20/2021	22:30					ACC spots in units and gets rigged up
5	Safety Meeting	10/20/2021	23:40					ACC had a pre job safety meeting with rig hands and OSR went over job procedure
6	Pressure Test	10/20/2021	23:55				3000	Pressure test pumps and lines to 3000 psi
7	Pump FW/Dye	10/21/2021	00:00	8.33	5	20	117	Pumped 20 bbls FW w/blue dye tracer at 5 bpm w/ 117 psi
8	Pump Primary CMT	10/21/2021	00:05	14.5	6	212.4	122	Pumped 212.40 bbls of primary cement (858 sks 14.5 ppg 1.39 yld 6.8 g/sk) at 6 bpm w/ 122 psi NOTE: density was verified with mud scales
9	Shut Down	10/21/2021	00:43					Shut down pumping cement
10	Drop Top Plug	10/21/2021	00:44					Drop top plug with OSR
11	Pump FW Disp.	10/21/2021	00:45	8.33	6		390	Start pumping FW disp at 6 bpm w/ 390 psi
12	Spacer To Surface	10/21/2021	00:58	8.33	6	55	879	At 55 bbls away into FW disp got blue dye tracer back to surface at 6 bpm w/ 879 psi
13	Cement To Surface	10/21/2021	01:01	8.33	6	75	924	At 75 bbls away into FW disp got cement back to surface at 6 bpm w/ 924 psi
14	Slow Down Rate	10/21/2021	01:06	8.33	3	105	781	At 105 bbls away into FW disp slow down rate to 3 bpm w/ 781 psi
15	Land Plug	10/21/2021	01:12	8.33	3	120	800	Land plug at 120 bbls away Final Circ Pressure was 800 psi , bump plug to 1680 psi and hold 5 min
16	Check Floats	10/21/2021	01:18					Check floats got 1 bbl back
17	Rig Down	10/21/2021	01:30					ACC rigs down equipment
18	Depart Location	10/21/2021	02:30					ACC departs location
19	Other	10/21/2021	02:31			45		Total cement back to surface - 45 bbls

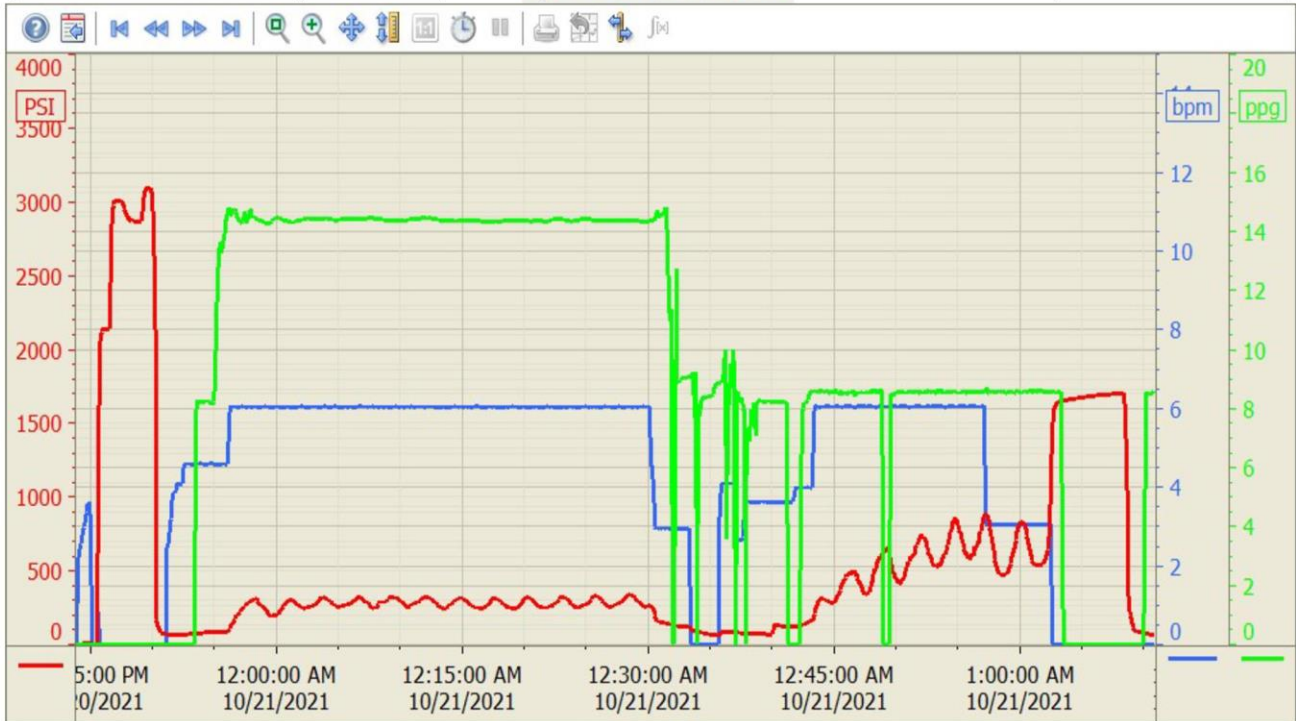
Pump Diagrams

Summary Trend

BONAZA CREEK D14-X44-30HN



Lease: STATE PRONGHORN FED



10/21/2021 3:02:16 A