



---

# **Bonanza Creek Energy**

## **SURFACE POST JOB REPORT**

STATE PRONGHORN FEDERAL 14-44-30HNB 05-123-51325  
S:30 T:5N R:61W Weld CO

CallSheet #: 78794  
Proposal #: 55635



**SURFACE Post Job Report**

**Attention:** Adam Conry | [aconry@bonanzacrk.com](mailto:aconry@bonanzacrk.com)  
Bonanza Creek Energy  
410 17TH STREET SUITE 1400 | DENVER, CO 80202

---

Dear Adam Conry,

Thank you for the opportunity to provide cementing services on this well. American Cementing strives to achieve complete customer satisfaction. If you have any questions regarding the services or data provided, please contact American Cementing at any time.

Sincerely,

**Nick Stille**

Cement SME | (307) 286-0815 | [nick.stille@americacementing.com](mailto:nick.stille@americacementing.com)

**Field Office**      1716 E Allison Rd, Cheyenne, WY 82007  
Phone: (307) 414-0049

## Job Details & Summary

### Geometry

Type	Function	OD (in)	ID (in)	Weight (lb/ft)	Thread	Top (ft)	Bottom (ft)	Excess (%)
Open Hole	Outer	n/a	13.5	n/a	n/a	0	1649	50
Casing	Inner	9.625	9.001	32.3	n/a	0	1637.17	0

### Equipment / People

Unit Type	Unit	Power Unit	Employee #1
Field Storage Silo	FSS(CTS)-450		
Cement Pump Float	CPF-184	TRS-109	Webster, Jazmyn
Light Duty Vehicles	LDV-048		Fuentes, Orlando
AS Cement Trailer Float	CTF(FTF)-031	TRC(TRB)-041	Clark, Cody
AS Cement Trailer Float	CTF-021	TRC(TRB)-088	Allen, Jared

### Timing

Event	Date/Time
Call Out	10/21/2021 05:30
Depart Facility	10/21/2021 07:30
On Location	10/21/2021 09:30
Rig Up Iron	10/21/2021 10:00
Job Started	10/21/2021 13:10
Job Completed	10/21/2021 14:35
Rig Down Iron	10/21/2021 14:40
Depart Location	10/21/2021 16:00

### General Job Information

Metrics	Value
Well Fluid Density	9 lb/gal
Well Fluid Type	WBM
Rig Circulation Vol	400 bbls
Rig Circulation Time	1 hours
Calculated Displacement	123.1 bbls
Actual Displacement	123 bbls
Total Spacer to Surface	20 bbls
Total CMT to Surface	43 bbls
Well Topped Out	No

### Casing Equipment

Type	Description	Qty
CENTRALIZER,9-5/8"NON-WELD	Bow Spring	16

### Job Details

Metrics	Value
Flare Prior to Job	No
Flare During Job	No
Flare at End of Job	No
Well Full Prior to Job	Yes
Well Fluid Density Into Well	9 lb/gal
Well Fluid Density Out of Well	9 lb/gal

### Job Details (cont.)

Metrics	Value
BHCT	86 °F
BHST	110 °F

### Water Analysis

Metrics	Value	Recommended
Water Source	Flat Tank	
Temperature	60 °F	50-80 °F
pH Level	7	5.5-8.5
Chlorides	0 mg/L	0-3000 mg/L
Total Alkalinity	240	0-1000
Total Hardness	0 mg/L	0-500 mg/L
Sulfates	>200 mg/L	0-1500 mg/L
Potassium	0 mg/L	0-3000 mg/L
Iron	0 mg/L	0-300 mg/L

### Circulation

Lost Circulation Experienced	Losses into Spacer	Losses into Cement	Losses into Displacement
No	No	No	No

### Job Execution Information

Fluid	Product	Function	Density (lb/gal)	Yield (ft <sup>3</sup> /sk)	Water Rq. (gal/sk)	Water Rq. (gal/bbl)	Volume (sks)	Volume (bbl)	Designed Top (ft)
1	Fresh Water	Flush	8.34			42.00		20.00	0
2	ACem S100.3.XC	Primary	14.50	1.39	6.81		858.00	212.46	0
3	Fresh Water	DisplacementFinal	8.34			42.00		123.00	0

### Job Fluid Details

Fluid	Type	Fluid	Product	Function	Conc.	Uom
2	Primary	ACem S100.3.XC	ASTM TYPE III	Cement	100.00	%
2	Primary	ACem S100.3.XC	STATIC FREE	Other	0.01	lb/sk

## Job Logs

Line	Event	Date (MM/DD/YY)	Time (HH:MM)	Density (lb/gal)	Pump Rate (bpm)	Pump Volume (bbls)	Pipe Pressure (psi)	Comment
1	Call Out	10/21/2021	05:30					ACC gets called out , requested time on location was hrs 10/21/21 1130 hrs
2	Depart Facility	10/21/2021	07:30					ACC departs facility
3	Arrive To Location	10/21/2021	09:30					ACC arrives to location rig is currently POOH and getting ready to run casing
4	Rig Up	10/21/2021	10:00					ACC spots in units and gets rigged up
5	Safety Meeting	10/21/2021	12:50					ACC had a pre job safety meeting with rig hands and OSR went over job procedure
6	Pressure Test	10/21/2021	13:10				3000	Pressure test pumps and lines to 3000 psi
7	Pump FW/Dye	10/21/2021	13:13	8.33	6	20	255	Pumped 20 bbls FW w/blue dye tracer at 6 bpm w/ 255 psi
8	Pump Primary CMT	10/21/2021	13:17	14.5	6	212.4	461	Pumped 212.40 bbls of primary cement ( 858 sks 14.5 ppg 1.39 yld 6.8 g/sk ) at 6 bpm w/ 461 psi NOTE: density was verified with mud scales
9	Shut Down	10/21/2021	13:53					Shut down pumping cement
10	Drop Top Plug	10/21/2021	13:54					Drop top plug with OSR
11	Pump FW Disp.	10/21/2021	13:55	8.33	6		161	Start pumping FW disp at 6 bpm w/ 161 psi
12	Spacer To Surface	10/21/2021	14:08	8.33	6	60	550	At 60 bbls away into FW disp got blue dye tracer back to surface at 6 bpm w/ 550 psi
13	Cement To Surface	10/21/2021	14:11	8.33	6	80	700	At 80 bbls away into FW disp got cement back to surface at 6 bpm w/ 700 psi
14	Slow Down Rate	10/21/2021	14:17	8.33	3	110	868	At 110 bbls away into FW disp slow down rate to 3 bpm w/ 868 psi
15	Land Plug	10/21/2021	14:20	8.33	3	123	855	Land plug at 123 bbls away Final Circ Pressure was 855 psi , bump plug to 1623 psi and hold 15 min
16	Check Floats	10/21/2021	14:35					Check floats got 1 bbl back
17	Rig Down	10/21/2021	14:40					ACC rigs down equipment
18	Depart Location	10/21/2021	16:00					ACC departs location
19	Other	10/21/2021	16:01			43		Total cement back to surface - 43 bbls

## Pump Diagrams

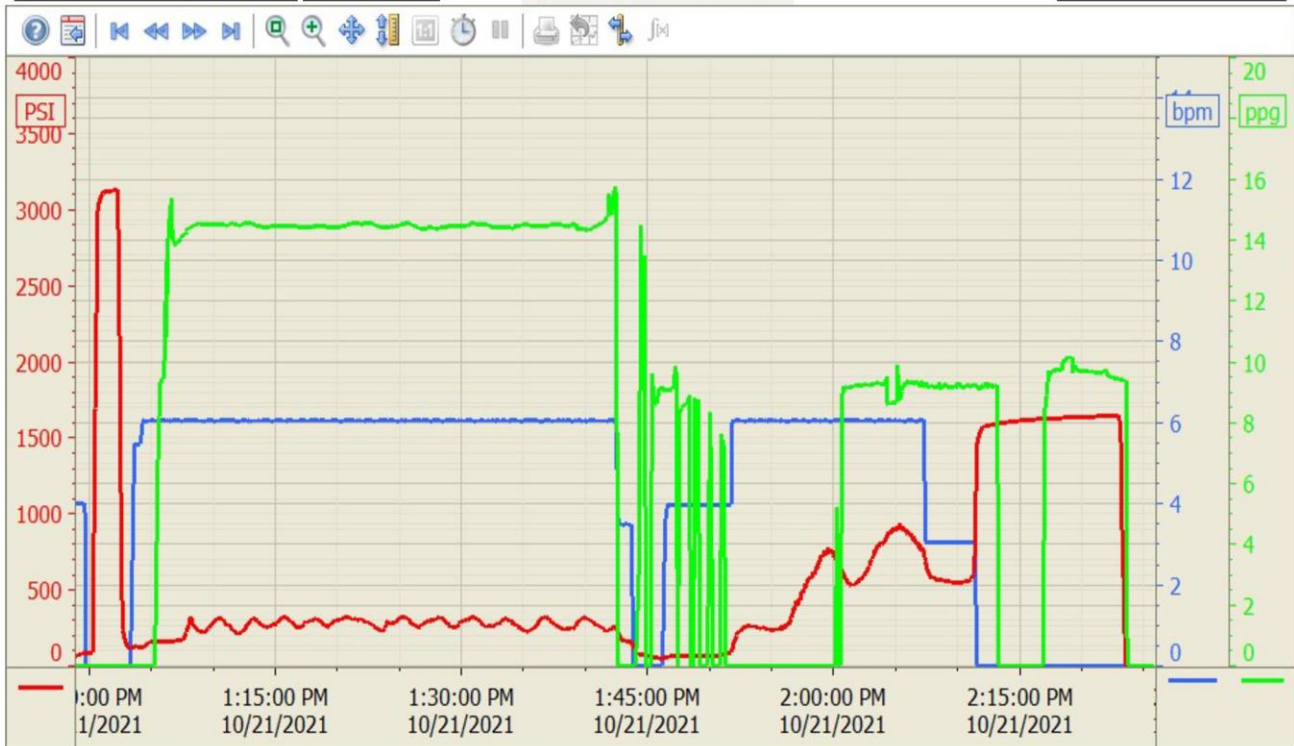
### Summary Trend

BONAZA CREEK

14-44-30HNB



Lease: STATE PRONGHORN FED



10/21/2021 3:09:48 P