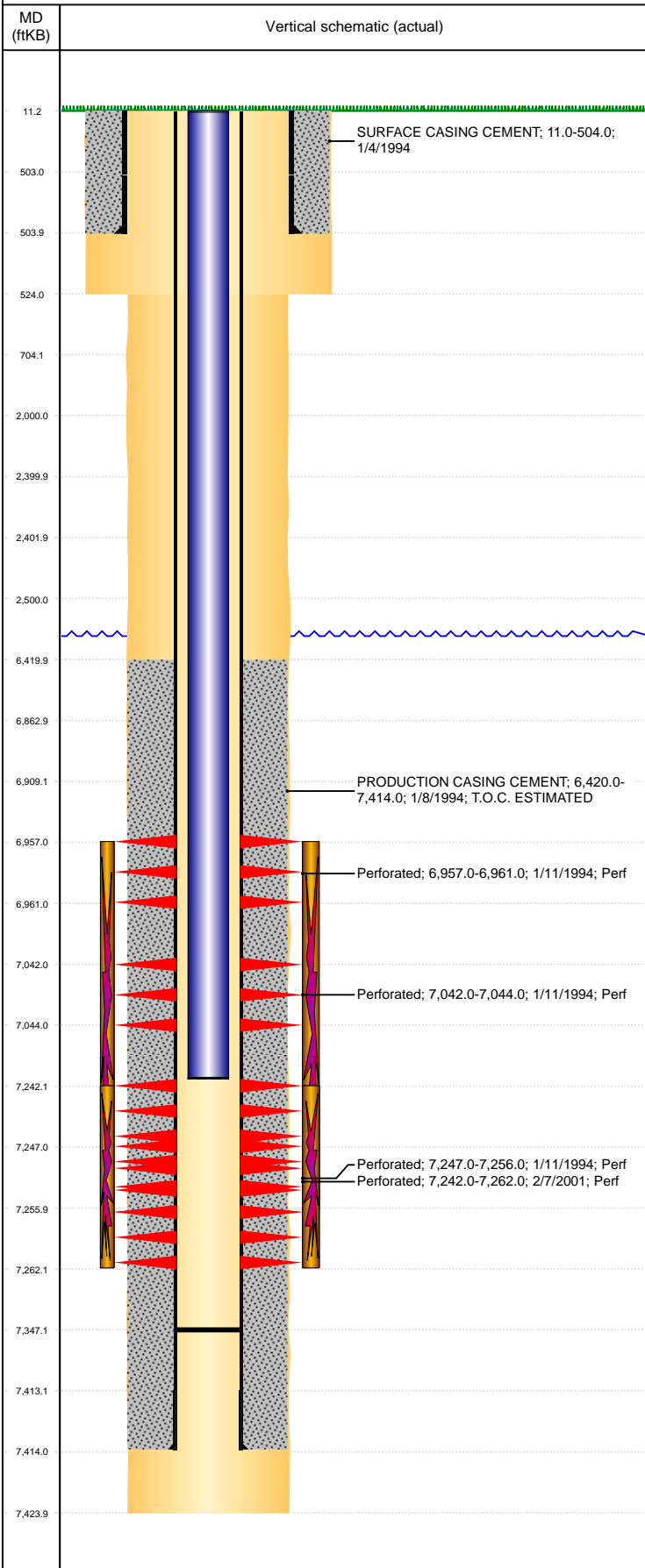


**Well Name: UPRC 23-0417**

VERTICAL, ORIGINAL HOLE, 2/23/2022 3:42:29 PM



Well Header									
API 05-123-17827		Business Unit DJ BASIN			District 15		Well Config VERTICAL		
KB - GL / MSL (ft... 11.00		Spud Date 1/4/1994		P & A Date		Well Production Status PR			SoRT No
Comment frac'd into by HS									
Surface Location (Congressional)									
Qtr 3 NW	Qtr 4 NW	Section 23	Twnshp 4	Twnsh... N	Range 67	Rng E... W	Actual Latitude (°) 40.30314536	Actual Longitude (°) -104.86594075	
Wellbore Sections									
Section Des			Size (in)			Act Top, MD (ftKB)		Act Btm, MD (ftKB)	
SURFACE			12 1/4			11		524	
PRODUCTION			7 7/8			524		7,424	
Casing Strings									
Csg Des			Run Date		OD (in)	Wt/Len (lb/ft)	Grade	Top, MD (ftKB)	MD (ftKB)
Surface			1/5/1994		8 5/8	24.00	J-55	11.0	504.0
Production			1/8/1994		3 1/2	7.70	B-70	11.0	7,414.0
Cement									
Des					Start Date		Top (ftKB)		Btm (ftKB)
SURFACE CASING CEMENT					1/4/1994		11.0		504.0
PRODUCTION CASING CEMENT					1/8/1994		6,420.0		7,414.0
Zone Statuses									
Zone Name	Status Date	Status	Fluid Type	Job				Prod Method	
NIOBRARA	2/9/1994	PR		DRILLING/COMPLETION - ORIGINAL, 1/4/1994...					
CODELL	2/16/2001	PR		RE-FRAC, 2/6/2001 00:00					
CODELL	10/8/2010	PR		TRI-FRAC, 8/16/2010 06:00					
Perforation Data									
Linked Zone		Bnch/Stg	Entered Shot Total	Top (ftKB)		Btm (ftKB)		Date	
NIOBRARA, ORIGINAL HOLE		A	4	6,957.00		6,961.00		1/11/1994	
NIOBRARA, ORIGINAL HOLE		B	2	7,042.00		7,044.00		1/11/1994	
CODELL, ORIGINAL HOLE			80	7,242.00		7,262.00		2/7/2001	
CODELL, ORIGINAL HOLE			9	7,247.00		7,256.00		1/11/1994	
Stimulation Intervals									
Zone				Start Date		Top (ftKB)		Btm (ftKB)	
NB-CD, ORIGINAL HOLE				1/13/1994		6,957.0		7,256.0	
CODELL, ORIGINAL HOLE				2/9/2001		7,242.0		7,262.0	
CODELL, ORIGINAL HOLE				9/3/2010		7,242.0		7,262.0	
Other In Hole									
Run Date	Des				Make		OD (in)	Top (ftKB)	Btm (ftKB)
Logs									
Date		Type				Top, MD (ftKB)		Btm, MD (ftKB)	
1/8/1994		COMPENSATED DENSITY				2,540.0		7,424.0	
1/8/1994		INDUCTION				504.0		7,424.0	
1/11/1994		GAMMA RAY/CCL				6,848.0		7,316.0	
Plug Back Total Depths									
Date		Type		Com				Depth (ftKB)	
1/11/1994				DEPTH LOGGER - CCL/GR LOG ONLY; NO BOND LOG				7,316.0	
9/7/2010		PLUG REMNANTS		DRILLED OUT PLUG/LANDED TBG				7,347.0	