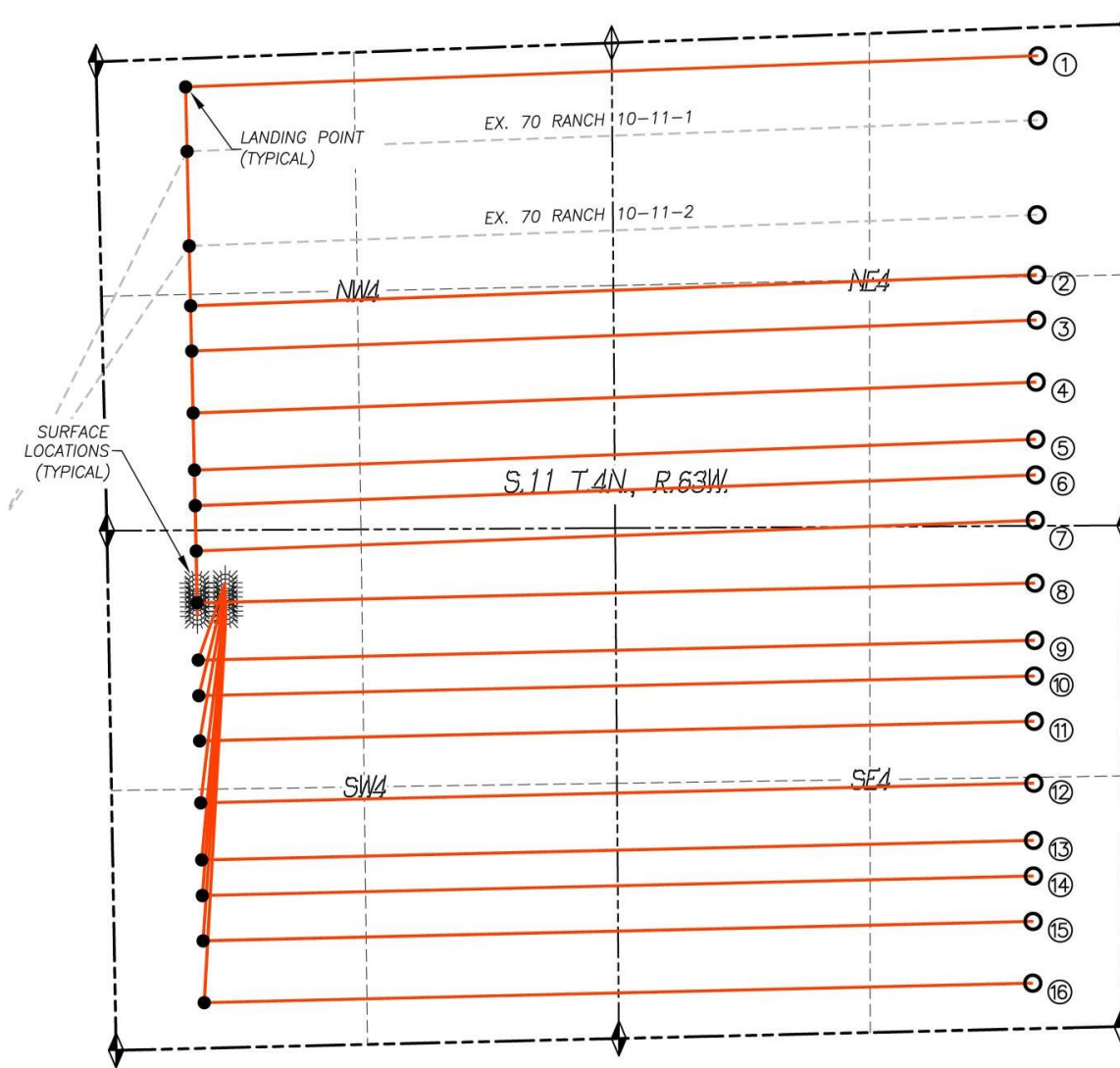
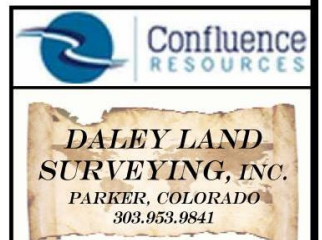
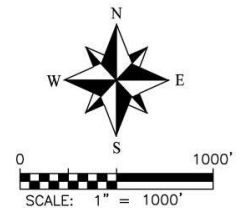


# BIGFOOT 11 DIRECTIONAL WELL PLAT

SECTION 11, TOWNSHIP 4 NORTH, RANGE 63 WEST OF THE 6TH P.M.

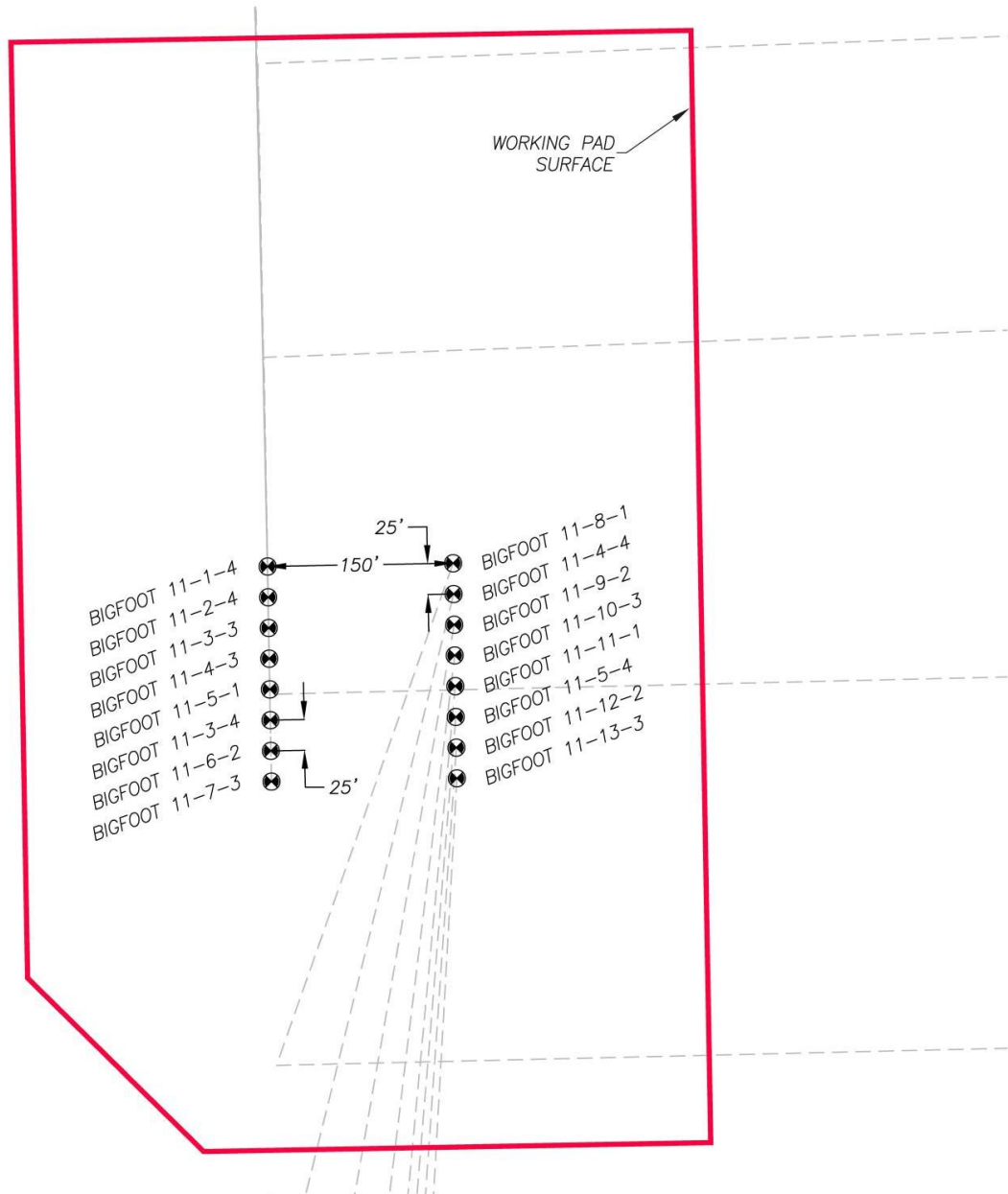


Slot	Well name	Latitude	Longitude	BHL Footage		STR
1	BIGFOOT 11-1-4	N40.33409°	W104.39742°	150' FNL	470' FEL	11-4N-63W
2	BIGFOOT 11-2-4	N40.33092°	W104.39745°	1306' FNL	470' FEL	11-4N-63W
3	BIGFOOT 11-3-3	N40.33026°	W104.39746°	1545' FNL	470' FEL	11-4N-63W
4	BIGFOOT 11-4-3	N40.32936°	W104.39747°	1872' FNL	470' FEL	11-4N-63W
5	BIGFOOT 11-5-1	N40.32854°	W104.39748°	2174' FNL	470' FEL	11-4N-63W
6	BIGFOOT 11-3-4	N40.32802°	W104.39748°	2362' FNL	470' FEL	11-4N-63W
7	BIGFOOT 11-6-2	N40.32736°	W104.39749°	2601' FNL	470' FEL	11-4N-63W
8	BIGFOOT 11-7-3	N40.32645°	W104.39750°	2352' FSL	470' FEL	11-4N-63W
9	BIGFOOT 11-8-1	N40.32562°	W104.39751°	2050' FSL	470' FEL	11-4N-63W
10	BIGFOOT 11-4-4	N40.32511°	W104.39751°	1862' FSL	470' FEL	11-4N-63W
11	BIGFOOT 11-9-2	N40.32445°	W104.39752°	1623' FSL	470' FEL	11-4N-63W
12	BIGFOOT 11-10-3	N40.32355°	W104.39753°	1296' FSL	470' FEL	11-4N-63W
13	BIGFOOT 11-11-1	N40.32272°	W104.39754°	994' FSL	470' FEL	11-4N-63W
14	BIGFOOT 11-5-4	N40.32221°	W104.39754°	806' FSL	470' FEL	11-4N-63W
15	BIGFOOT 11-12-2	N40.32155°	W104.39755°	567' FSL	470' FEL	11-4N-63W
16	BIGFOOT 11-13-3	N40.32065°	W104.39756°	240' FSL	470' FEL	11-4N-63W



# BIGFOOT 11 DIRECTIONAL WELL PLAT

SECTION 11, TOWNSHIP 4 NORTH, RANGE 63 WEST OF THE 6TH P.M.



SURFACE HOLE LOCATION DATA					
NAME	LATITUDE	LONGITUDE	FOOTAGE		ELEV
BIGFOOT 11-8-1	N40.32648°	W104.41283°	2455' FSL	620' FWL	4621
BIGFOOT 11-4-4	N40.32641°	W104.41283°	2430' FSL	620' FWL	4621
BIGFOOT 11-9-2	N40.32635°	W104.41283°	2405' FSL	620' FWL	4622
BIGFOOT 11-10-3	N40.32628°	W104.41283°	2380' FSL	620' FWL	4622
BIGFOOT 11-11-1	N40.32621°	W104.41283°	2355' FSL	620' FWL	4622
BIGFOOT 11-5-4	N40.32614°	W104.41283°	2330' FSL	620' FWL	4621
BIGFOOT 11-12-2	N40.32607°	W104.41282°	2305' FSL	620' FWL	4620
BIGFOOT 11-13-3	N40.32600°	W104.41282°	2280' FSL	620' FWL	4619
BIGFOOT: 11-1-4	N40.32648°	W104.41337°	2456' FSL	470' FWL	4616
BIGFOOT: 11-2-4	N40.32641°	W104.41337°	2431' FSL	470' FWL	4615
BIGFOOT: 11-3-3	N40.32634°	W104.41337°	2406' FSL	470' FWL	4614
BIGFOOT: 11-4-3	N40.32627°	W104.41337°	2381' FSL	470' FWL	4614
BIGFOOT: 11-5-1	N40.32620°	W104.41337°	2356' FSL	470' FWL	4613
BIGFOOT: 11-3-4	N40.32613°	W104.41336°	2331' FSL	470' FWL	4613
BIGFOOT: 11-6-2	N40.32606°	W104.41336°	2306' FSL	470' FWL	4612
BIGFOOT: 11-7-3	N40.32600°	W104.41336°	2281' FSL	470' FWL	4612

