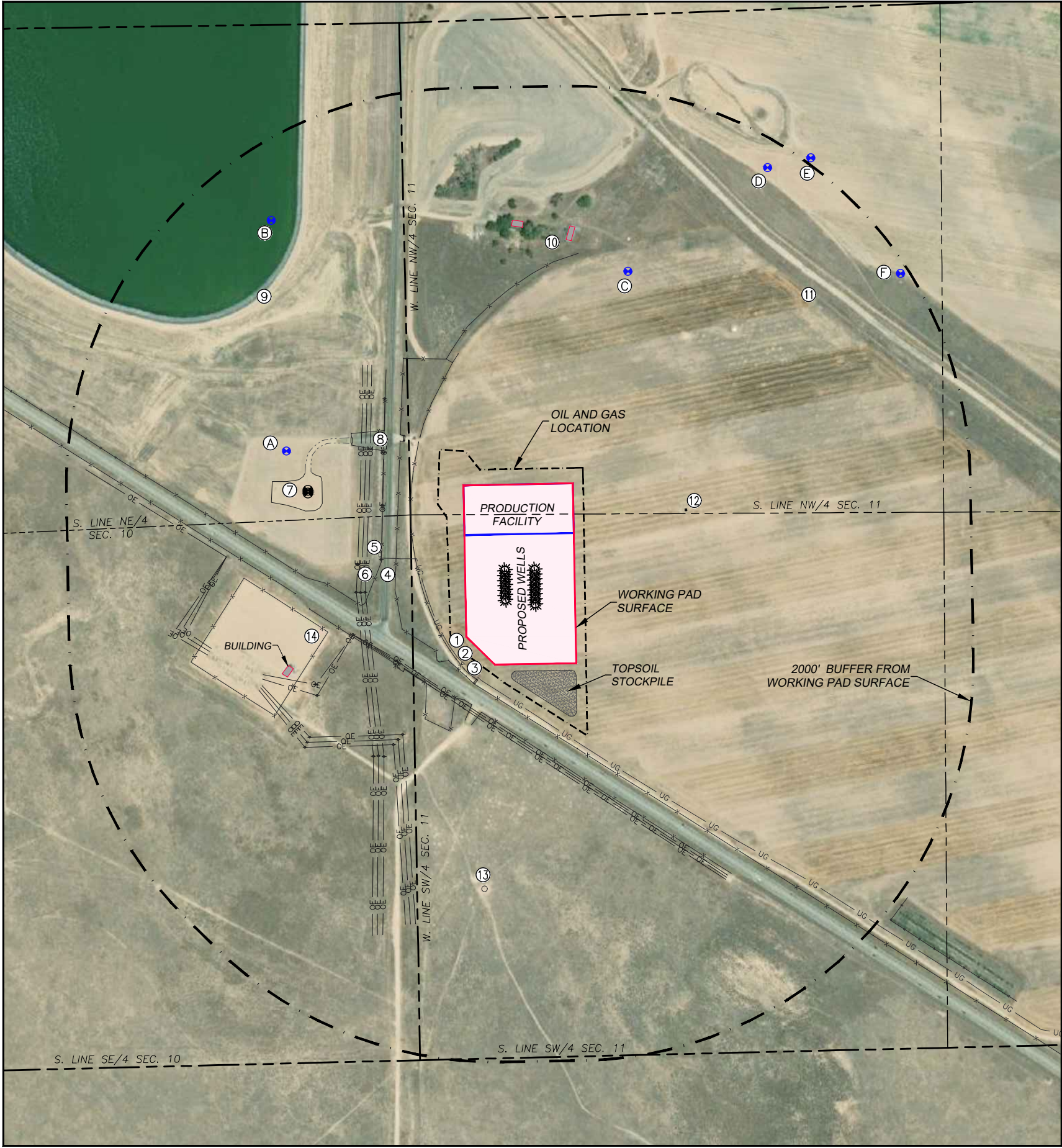


LOCATION DRAWING
BIGFOOT 11 WELL AND PRODUCTION PAD
SECTION 11, TOWNSHIP 4 NORTH, RANGE 63 WEST OF THE 6TH P.M.



IMPROVEMENTS	
(MEASURED FROM THE NEAREST EDGE OF THE PROPOSED WORKING PAD SURFACE)	
1. BURIED GAS LINE:	105'± SW
2. WIRE FENCE:	108'± SW 168'± SW 232'± SW 269'± W 332'± W 409'± W
3. FIELD ACCESS ROAD:	133'± SW 239'± S 417'± NW
4. PUBLIC ROAD:	390'± W 160'± SW
5. LAUNCHER/VALVES:	422'± W
6. O.H. UTILITY:	426'± W 495'± W 575'± SW
7. WELL PAD LOC ID 451960:	714'± W
70 RANCH 10-11-2:	783'± W
70 RANCH 10-11-1:	783'± W
8. WELL ACCESS RD.:	486'± NW
9. 70 RANCH RESERVOIR:	1430'± NW
10. BUILDING:	1295'± N 1230'± N 866'± SW
11. CANAL:	1553'± NE
12. HUNTING BLIND:	562'± E
13. STOCK TANK:	1129'± S
14. SUB STATION:	697'± W

Permitted Water Well Information				
Feature	Permit No.	Use	Status	Dist from WPS
A	53780-MH	Monitoring Well	Constructed	908' +/- NW
B	59961-MH	Monitoring Well	Issued	1647' +/- NW
C	91152-VE	Unknown	Issued	1102' +/- NE
D	301518	Monitoring /Observation	Constructed	1867' +/- NE
E	53742-HN	Monitoring Well	Constructed	2029' +/- NE
F	301516	Monitoring /Observation	Constructed	1958' +/- NE

LEGEND

- Building
- Ex. Oil & Gas Well
- OE Overhead Utility
- UE Underground Gas Line
- Wire Fence

