

**LOCATION PICTURES**  
**BIGFOOT 11 WELL AND PRODUCTION PAD**  
SECTION 11, TOWNSHIP 4 NORTH, RANGE 63 WEST OF THE 6TH P.M.

DATE: 6/4/20



LOOKING NORTH



LOOKING WEST



LOOKING EAST



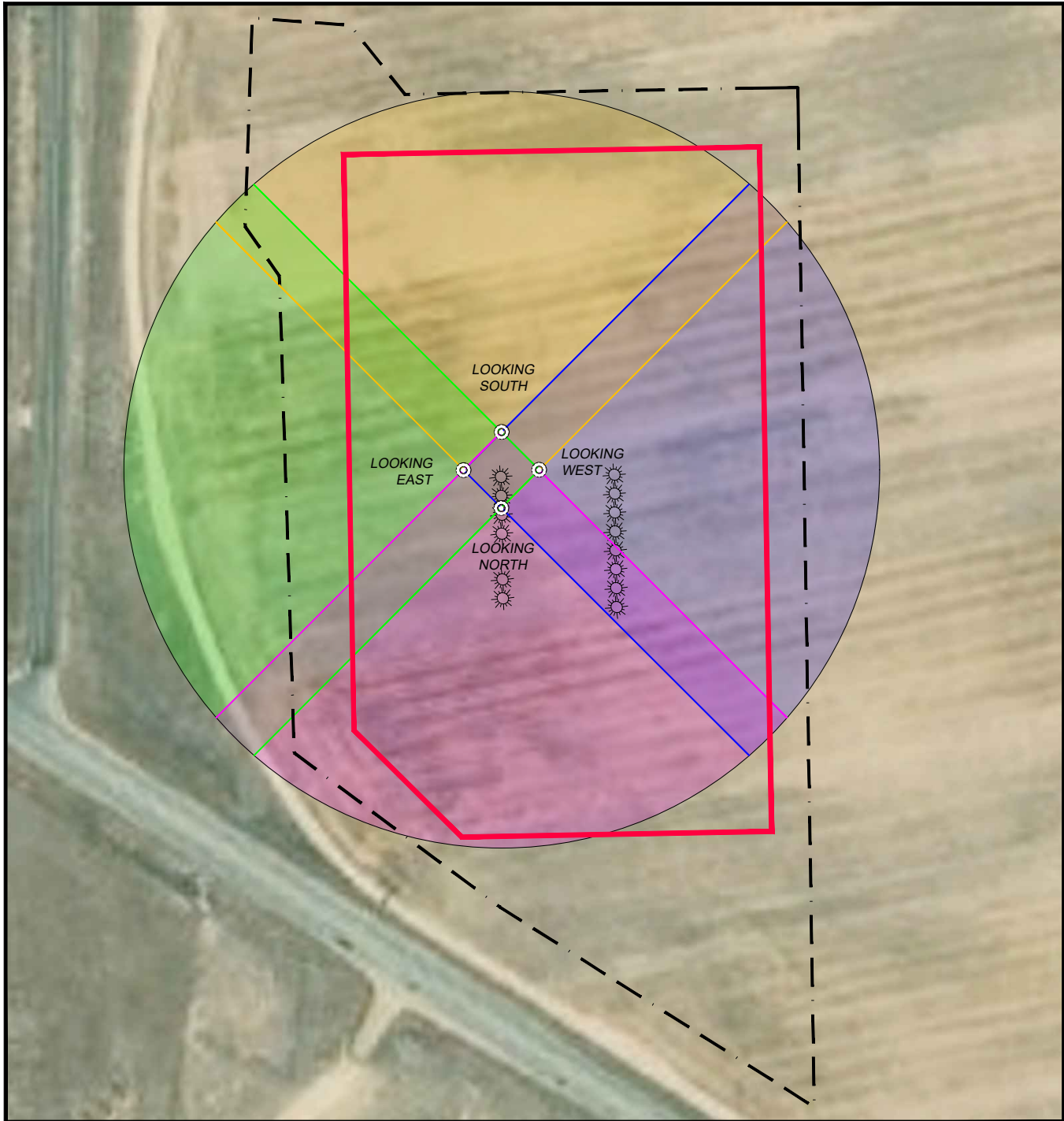
LOOKING SOUTH



# LOCATION PHOTOS AERIAL

## BIGFOOT 11 WELL AND PRODUCTION PAD

SECTION 11, TOWNSHIP 4 NORTH, RANGE 63 WEST OF THE 6TH P.M.



### LEGEND

- WORKING PAD SURFACE
- - - - - OIL AND GAS LOCATION
- LOCATION VIEW LOOKING NORTH
- LOCATION VIEW LOOKING EAST
- LOCATION VIEW LOOKING SOUTH
- LOCATION VIEW LOOKING WEST
- ⊙ STANDING LOCATION OF PHOTO

