

# **SITE SAFETY AND EMERGENCY ACTION PLAN**

## **Confluence DJ LLC**



**Denver, CO, 80202**

### **Bigfoot 11 Oil and Gas Location**

**SWNW & NWSW Sec: 11 T4N R63W**

**22588 CR 69**

**WELD COUNTY, COLORADO**

**Proposed Spud Date: 4<sup>th</sup> Quarter 2020**

## **Table of Contents**

### **Section 1 – Signature Page**

### **Section 2 – Site specific information**

- a.** Site Safety Requirements
- b.** Emergency muster/assembly point(s)
- c.** 911 Address and GPS coordinates
- d.** Site description
- e.** Nearby schools and other High Occupancy Buildings
- f.** Directions to project locations
- g.** Location of SDS sheets
- h.** Location of sign-in sheets, JSA, safety forms

### **Section 3 – Maps & Documents**

- a)** Site Map
  - i. 250', 500', 1,000' Buffer zones and location of nearest Building Unit(s)
  - ii. Access Map and Muster point(s)
  - iii. 2500' Buffer zone

### **Section 4 – List of Emergency Contacts**

- a)** Energy Company contact information
- a)** Energy Company community/media relations contact information
- b)** First responder contact information
- c)** Regulatory contact information
- d)** Nearest hospital
- e)** Spill response organization contact information

### **Section 5 – Spill Response and Reporting**

- a)** Spill Response
- b)** Spill Reporting

### **Section 6 – Reportable storage quantity's**

- a)** Reportable quantities
- b)** Tier II Reporting

### **Section 7 – Evacuation Information**

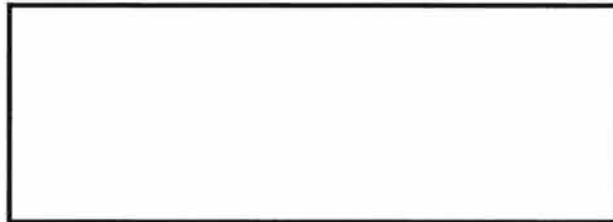
- a)** Evacuation plan procedures (public)

### **Section 8 – Coordination with First Responder Agencies**

**SECTION 1**  
**SITE SPECIFIC INFORMATION**

Confluence DJ LLC			
Name	Signature	Title	Date
Brittany Rothe Confluence DJ LLC		Engineering Manager	7/29/2020
Fire District			
Name	Signature	Title	Date
Platte Valley Fire Protection District		Captain of Prevention	9/8/2020

**Weld County Office of Emergency Management**  
*Digitally Signed*



## **SECTION 2**

### **SITE SPECIFIC INFORMATION**

**a) Site Safety Requirements and General Information**

The minimum personal protective equipment (PPE) to enter any Confluence DJ LLC production location includes hard hat, safety glasses, safety toe boots, fire resistant clothing (FRC), and a 4-gas monitor. All contractors and visitors are responsible for providing their employees with the appropriate training on and use of PPE while on Confluence DJ LLC locations. In addition, all contract personnel entering an Confluence DJ LLC location to perform work must understand and abide by Confluence DJ LLC contractor expectations relating to environmental, health, and safety requirements.

The primary hazards that any person must be aware of while on an Confluence DJ LLC production location include, but are not limited to, the potential for release of hydrocarbon gases and/or liquids from production equipment/tanks, heavy truck and equipment traffic, loud noise, high pressures, and the potential for a flash fire. These hazards can vary depending on the work being performed.

**b) Emergency Muster/Assembly point(s)**

**Bigfoot 11 Pad**

**SWNW & NWSW Section: 11 T4N R63W**

**c) 911 Address and GPS coordinates**

**API#** – Pending COGCC Permit Approval

**Legal Description** – SWNW & NWSW Section: 11 Township: 4N Range: 63W

**Address** - 22588 CR 69

**Directions:** The proposed location of the wells is 960 mile west of the intersection of Weld County Road 69 and State Highway 34, in the SWNW & NWSW of section 11 Township 4N Range 63W.

**Town, CO Zip** – Colorado

**Lat/Long:** Lat: 40.32831°N      Long: -104.41540°W

**d) Site description**

The **Bigfoot 11 oil and gas location in SWNW and NWSW Sec: 11 T4N R63W** Pad is an Confluence DJ LLC oil and gas production facility that will have twenty three (23) horizontal oil and gas wells along with fifteen (15) 500 barrel crude oil storage tanks and five (5) 500 barrel produced water tanks located inside a lined secondary containment structure.

e) **Nearby schools and other High Occupancy Buildings**

None within 2500' of location.

f) **Directions to Project Locations**

**Bigfoot 11 Pad SWNW & NWSW Section: 11 T4N R63W**

The proposed location of the wells is 960 mile west of the intersection of Weld County Road 69 and State Highway 34, in the SWNW & NWSW of section 11 Township 4N Range 63W.

g) **Location of SDS sheets, Sign-In Sheets, JSAs, and Safety Forms**

Depending on the operations taking place on location, the chemicals that may be present will vary. Regardless, hazard communication is a critical safety measure and Safety Data Sheets (SDS's) will be available from the Company Representative present or the contractor performing work on location.

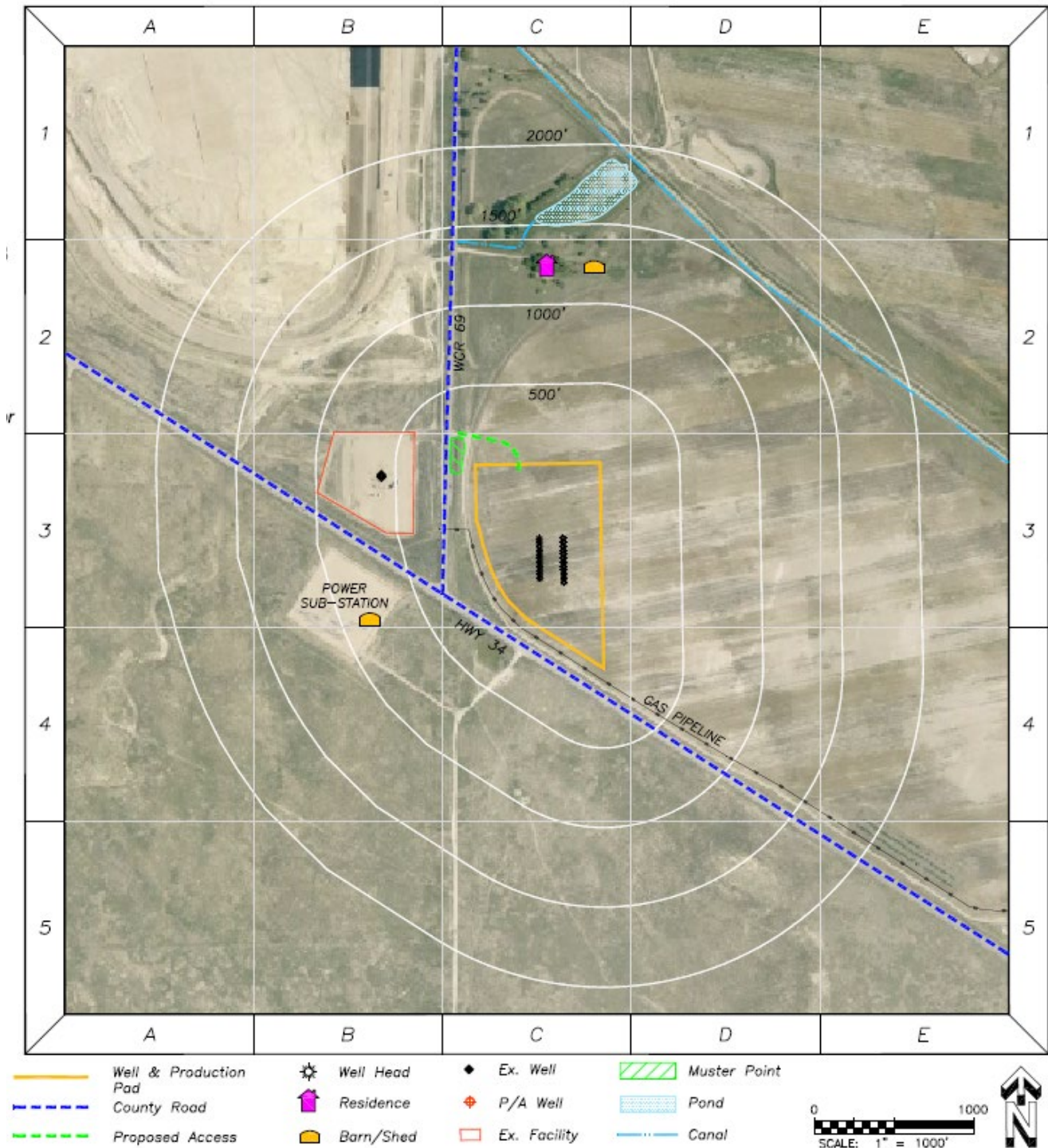
During drilling and completion activities all employees and approved visitors to the **Bigfoot 11 Pad SWNW & NWSW Section: 11 T4N R63W** will be required to enter through a manned security checkpoint at the location entrance where they will be required to sign in and will be provided with a detailed safety briefing of current operations and all safety precautions that must be adhered to while on location. In addition, all who enter the location must also sign out upon their departure. Security personnel are required to account for all persons entering or leaving location during active operations and in the event of an incident.

Once drilling and completion activities are finalized, the site will transition to its production phase and no unauthorized personnel will be allowed on location without first contacting a company representative. At this point, the primary chemicals stored on site will be crude oil and produced water.

### Section 3

### Project Area Map

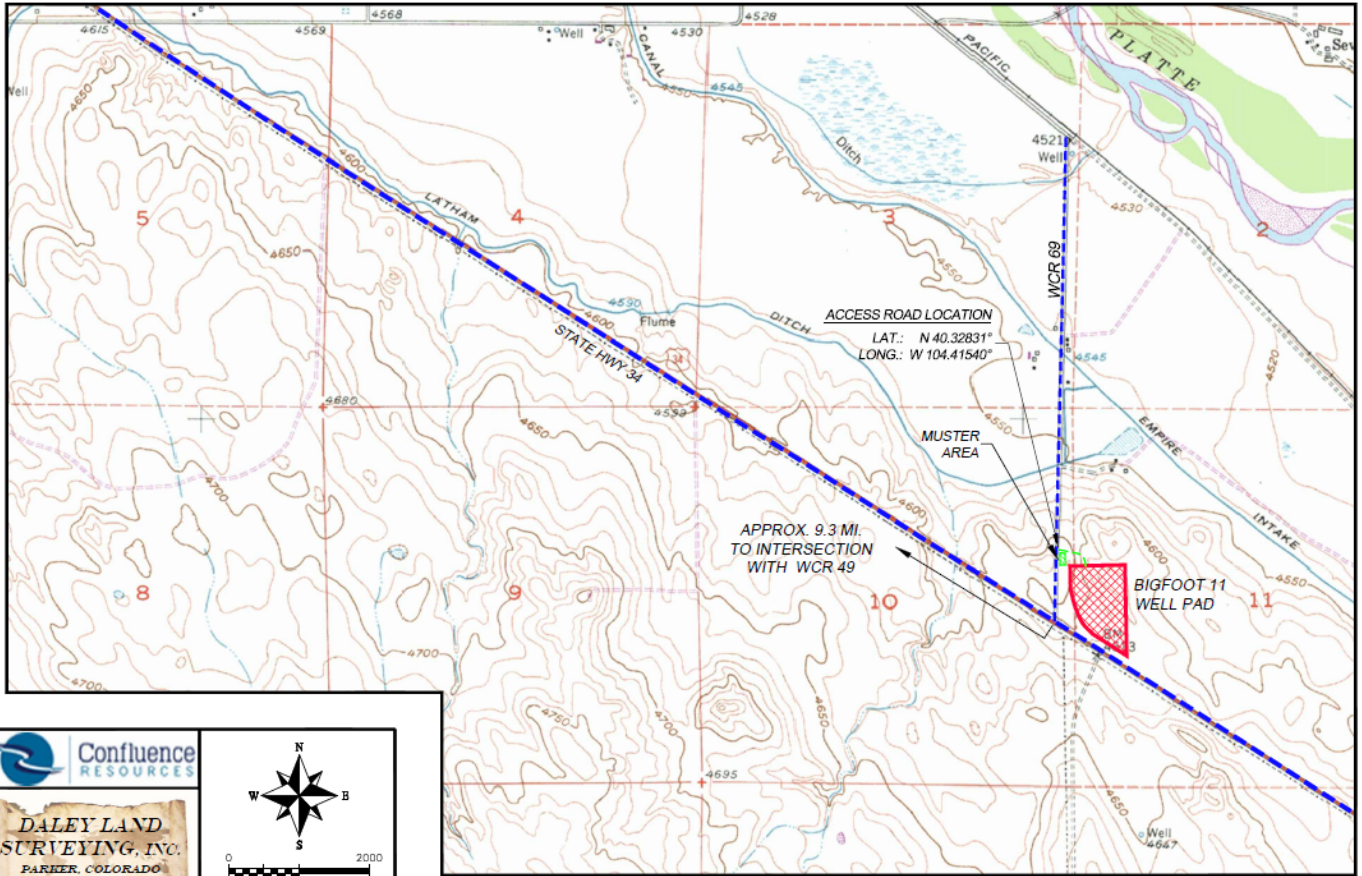
500', 1,000', 1,500', 2,000' Buffer



## Project Location Access Map and Muster Point

### ACCESS ROAD MAP AND MUSTER POINT BIGFOOT 11 WELL & PRODUCTION PAD

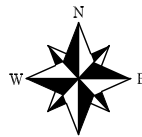
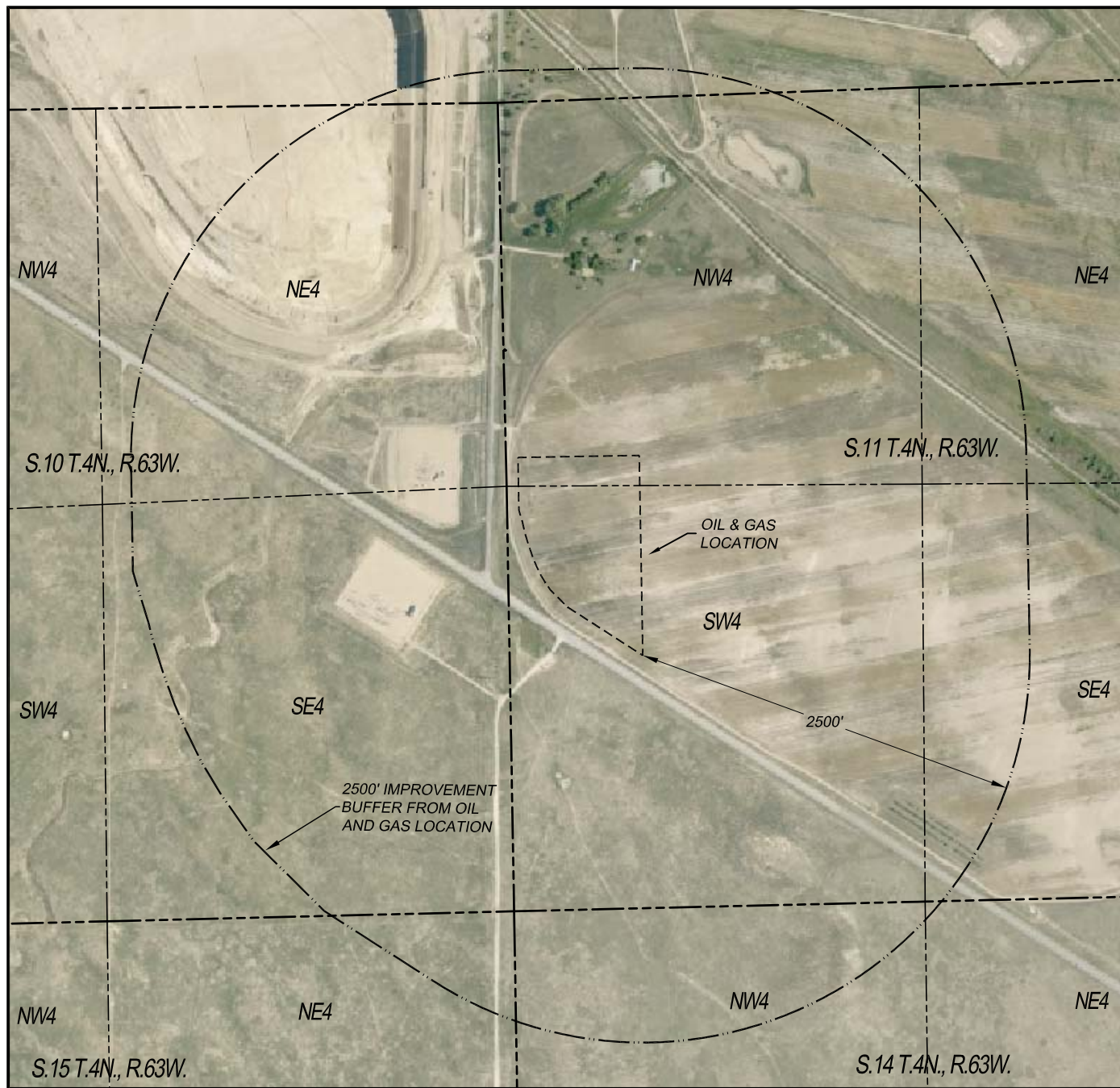
SECTION 11, TOWNSHIP 4 NORTH, RANGE 63 WEST OF THE 6TH P.M.





PROJECT AREA MAPS – 2500 FOOT BUFFER  
BIGFOOT 11 WELL & PRODUCTION PAD

SECTION 11, TOWNSHIP 4 NORTH, RANGE 63 WEST OF THE 6TH P.M.



0 1000  
SCALE: 1" = 1000'



DALEY LAND  
SURVEYING, INC.  
PARKER, COLORADO  
303.953.9841



**Section 4**  
**List of Emergency Contacts**

**a) Energy Company**

Name	Office Phone	Emergency/Cell
Confluence DJ LLC 1001 17th Street #1250 Denver, CO 80202	303-226-9500	970-590-6049
Mike Dickinson, VP Operations	303-226-9517	none
Bob Weitzel, Operations Manager	970-481-8730	none
Confluence DJ 24-Hour Emergency Response Number	1-888-479-7627	none

**b) Energy Company community/media relations**

Name	Office	Cell Phone
Mike Dickinson, SVP Operations for Confluence	303-226-9517	none

**c) First Responders**

Name	Emergency	Office Number
Platte Valley Fire Protection District	911	970-353-3890
In case of Emergency	911	none
Non-Emergency Contact: Hudson on Duty Shift Member	911	970-381-3917
Colorado State Highway Patrol	911	970-506-4999
Weld County Sheriff	911	970-356-4015
Weld County Office of Emergency Management	911	970-304-6540
Weld County Regional Communication Center	911	970-350-9600 option 4
Colorado State Highway Patrol	911	970-506-4999

**d) Regulator Contacts**

Name	Office Phone	Cell Phone
COGCC	303-894-2100	none
CDPHE	877-518-5608	none
Colorado Parks & Wildlife	303-291-7227	none
National Response Center	800-424-8802	

**e) Medical Facilities**

Name	Office Phone	Cell Phone
Platte Valley Medical Center	303-498-1600	none
Platte Valley Medical Center at Reunion	303-4981600	none

**f) Spill Response Organization**

Name	Office Phone	Cell Phone
Hydrovac Services-Northern Plains	303-654-9206	none
Dirt Work Contractor-M&M Construction	970-539-2254	none

**g) Fire, explosion, associated with loss of well control**

Name	Office Phone
Platte Valley Fire Protection District	970-353-3890
Wild Well Control, Inc.	281-353-5481
Northern Colorado Medical Facility (Burn Unit)	970-810-4121
Weld County Office of Emergency Management (Roy Rudisill)	970-304-6540

**h) Government Agencies**

Name	Office Phone
Kersey Police Department	911 or 970- 353-1681
Weld County Sheriff's Office	911 or 970-356-4015
COGCC	303-894-2100
CDPHE	877-518-5608
Weld County (Jason Maxey, LGD)	970-400-3579

**i) Railroad Emergency Response**

Name	Office Phone
Union Pacific Railroad	888-877-7267

## **Section 5**

### **Spill Response and Clean Up**

#### **a) Spill Response**

There are multiple types of hydrocarbons which can be released/spilled during oil and gas production and exploration. Most commonly released are unrefined products such as crude oil and produced water. Refined petroleum products such as diesel, gasoline, and motor oil spills are less common, but still equally important to mitigate. If a spill is found reportable, it will be mitigated in accordance with Colorado Oil and Gas Conservation Commission (COGCC) and Colorado Department of Public Health and Environment (CDPHE) guidelines.

Once a release has been identified, it will be immediately stopped and contained if possible and is safe to do so. When containing a spill; pig blankets, snakes, absorbent materials, or earthen berms will be constructed around the release to keep material from spreading. These materials will be provided by Confluence DJ LLC and the contract company and kept on-site. Diligent efforts will be made to minimize contact with live vegetation or open water if release is outside of secondary containment structures.

In the event of a large incident requiring outside assistance, Confluence DJ LLC has contracted with Northern Plains and M&M Construction. Northern Plains and M&M Construction possesses a working knowledge of oil and gas operations, emergency response and Incident Command. Once notified Northern Plains and M&M Construction personnel can be on location within 12 hours.

#### **b) Spill Reporting**

What determines a reportable spill and to whom does the report go?

- A spill/release will be reported to the COGCC if released material is property of Confluence DJ LLC and meets the COGCC reporting thresholds (see below), an example would be crude oil released from a separator or produced water from a water vault.
- A spill/release will be reported to the Weld County LEPC if released material is property of Confluence DJ LLC and meets the COGCC reporting thresholds (see below),
- A spill/release will be reported to the CDPHE if released material is in the custody of a third party for spills that meet CDPHE reporting thresholds, are of any size that impact or threaten to impact waters of the state, a residence or occupied structure, livestock or public byway. An example would be an oil hauler over filling a truck and spills product onto the ground next to a flowing irrigation ditch.

There are three release volume thresholds which determine if a hydrocarbon spill is reportable. These are:

1. If crude oil or produced water is released **INSIDE** secondary containment and volume is greater than **5 barrels**.
2. If crude oil or produced water is **OUTSIDE** secondary containment and volume is greater than
3. **1 barrel**.
4. If more than **25 gallons** of petroleum product such as diesel, gasoline or motor oil is spilled
5. **OUTSIDE** of secondary containment.

Once a spill is determined reportable, there is a 24-hour deadline to make initial notification to the COGCC or CDPHE depending on product ownership. Spills/releases in the custody of Confluence DJ LLC will be reported by a Company representative. Spills/releases in the custody of a third party will be reported by the responsible company's EHS Department to the appropriate agency and to Confluence DJ LLC.

These regulatory guidelines will be strictly followed by Confluence DJ LLC and any contractors operating under Confluence DJ LLC guidance during all activities at the Bigfoot 11 Pad SWNW and NWSW of Sec: 11 T4N R63W.

## **Section 6**

### **Reportable quantities**

#### **a) Reportable quantities**

Mandated by Section 312 of the Emergency Planning and Community Right-To-Know Act (EPCRA) – also known as SARA Title III – the Tier II form captures information about the types, quantities, and locations of hazardous chemicals at a given facility. The form also lists contact information for the facility's designated emergency point-of-contact.

Any facility that is required to maintain MSDSs (or SDSs) under the Occupational Safety and Health Administration (OSHA) regulations for hazardous chemicals stored or used in the work place.

Facilities with chemicals in quantities that equal or exceed the lists of lists thresholds must report.

- Propane, benzene, propene and methane are on the lists of lists and are known to be in crude oil. In addition, diesel is on the lists of lists and may be stored on sites during construction.

#### **b. Reportable requirements**

If your facility will meet the requirements under 40 CFR, you must submit your Tier II report to the state every year before March 1<sup>st</sup>.

These regulatory guidelines will be strictly followed by Confluence DJ LLC and any contractors operating under Confluence DJ LLC guidance during all activities at the Willow 22 West Pad SWSW Sec: 22 T1N R65W.



## **Section 7**

### **Evacuation Information**

#### **a. Evacuation Plan Procedures (public)**

The procedure to be used in alerting nearby persons in the event of any occurrence that could pose a threat to life or property will be arranged and completed with public officials in detail.

In the event of an actual emergency, the following steps will be immediately taken:

1. The Confluence DJ LLC representative will immediately notify proper authorities, including the sheriff's office, highway patrol, and any other public officials as described above and will enlist their assistance in warning residents and transients in the calculated radius of exposure.
2. The Confluence DJ LLC will coordinate with local authorities to warn residents' down-wind of the location and within radius of exposure from the well site. Additional evacuation zones may be necessary as the situation warrants.
3. The Confluence DJ LLC representative will coordinate with appropriate emergency personnel to divert traffic in the vicinity away from the potentially dangerous area. No trespassing and warning signs will be posted at the entrance to the well site. The contract company will monitor essential and non-essential traffic on-site.
4. General:
  - a. The area included within the radius of exposure is considered to be the zone with the maximum potential hazard. When it is determined that conditions exist which create an additional area (beyond the initial zone of maximum potential hazard) vulnerable to possible hazard, public areas in the additional hazardous area will be evacuated.
  - b. In the event of a disaster, after the public areas have been evacuated and traffic stopped, it is expected that local civil authorities will have arrived and within a few hours will have assumed direction of and control of the public, including all public areas. Confluence DJ LLC will cooperate with these authorities to the fullest extent and will exert every effort by careful advice to such authorities to prevent panic or rumors.
  - c. Confluence DJ LLC will dispatch appropriate personnel to the disaster site as soon as possible. The company's personnel will cooperate with and provide such information to civil authorities as they might require.

**Section 8**  
**Coordination with First Responder Agencies**

- a) Confluence DJ LLC will communicate site construction, drill spud, completion operations and Production Turn-In-Line dates to the Weld County Office of Emergency Management for coordination/communication with local first responders. These start dates will be provided a minimum of 7 business days prior to commencement or change in oil and gas development operations.
- b) In the event of an emergency requiring First Responders, Unified Command will be established between the Confluence DJ LLC appointed company man on location and First Responders present. Unified Command post will be established based on conditions present at time of incident.
- c) While foam is not currently supplied for oil and gas emergency response, Confluence DJ LLC is an active member of Colorado Preparedness & Response Network (CPRN) and a solution is being sought thorough a cooperative effort including other operators, First Responders and Weld County. It is Confluence DJ LLC intention to have established a source of foam by the 4th quarter of 2018.
- d) Confluence DJ LLC EHS representative and first responders identified in this Site Safety and Emergency Action Plan have reviewed this plan and discussed coordination efforts in the event of an emergency situation requiring first responder assistance.

# TACTICAL RESPONSE CARD



## BIGFOOT 11 WELL AND PRODUCTION PAD 22588 CR 69

SECTION 11, TOWNSHIP 4 NORTH, RANGE 63  
WEST OF THE 6TH P.M.

LAT.: N40.32648°  
LONG.: W104.41337°

All Emergencies will be reported through 911

### NOTIFICATIONS

1. Confluence Resources Emergency Response Coordinator  
888-479-7276  
303-226-9500
2. Platte Valley Fire  
970-353-3890
3. National Response Center  
800-424-8802
4. COGCC Field Supervisors  
719-343-0130, 970-573-1277
5. EPA Region VIII  
303-212-6312
6. Weld County OEM  
970-304-6540

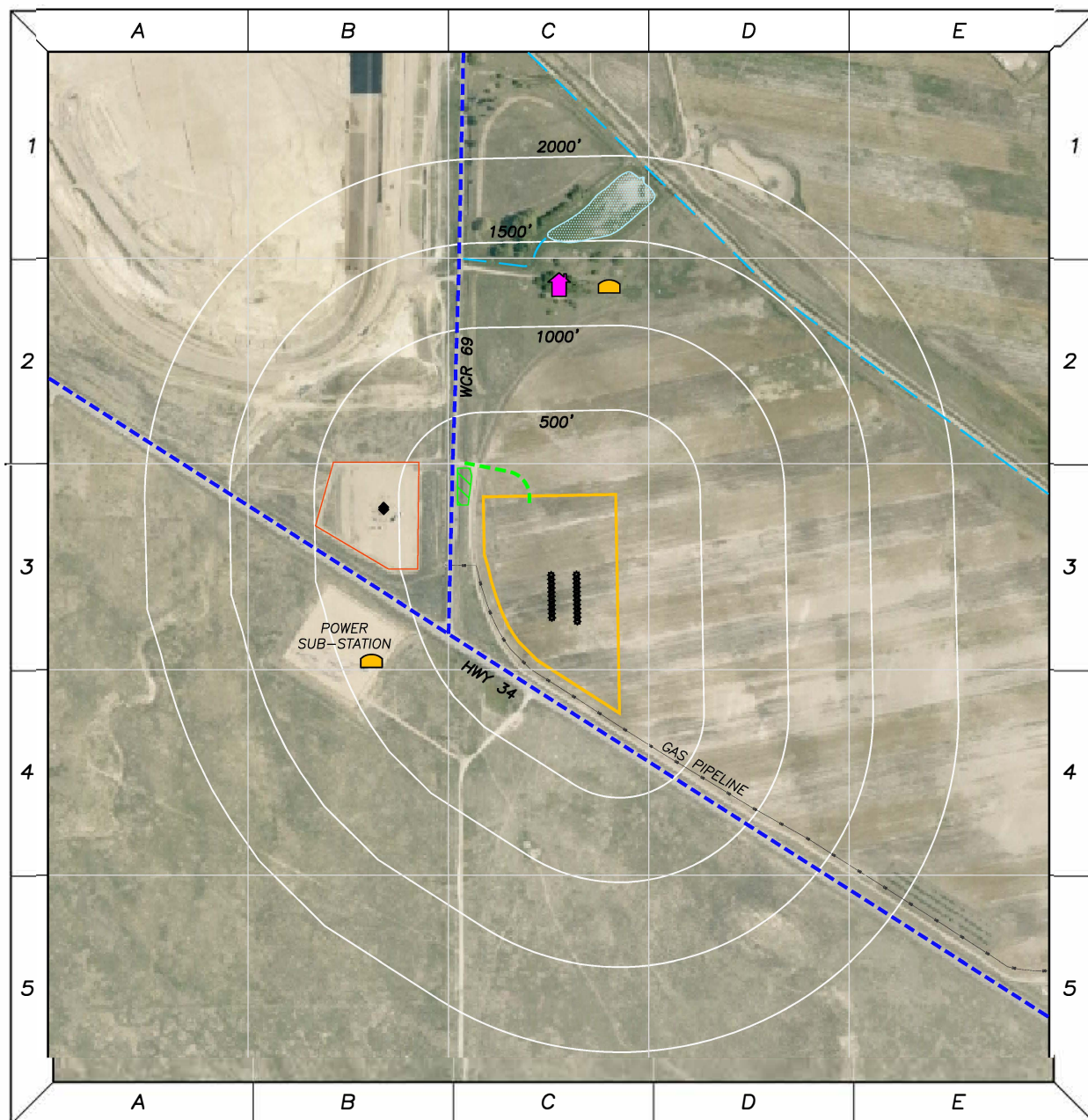
### RESPONSE OBJECTIVES

Minimize the impact to the environment and local community. Contain and recover released product to the extent possible.

### CRITICAL RECEPTORS

1. Public Roads
2. Canals, Pond
3. Oil & Gas Facilities/Pipelines
4. Residence & Sheds
5. Power Substation

Note: This Tactical Response Card is a reference tool and is intended to provide guidance during an actual event or exercise. Placement of resources may need to be adjusted according to environmental variables. It is the responsibility of emergency response personnel to be trained in response and to be able to make adjustments to the card as needed.



- Well & Production Pad
- County Road
- Proposed Access

- Well Head
- Residence
- Barn/Shed

- Ex. Well
- P/A Well
- Ex. Facility

- Muster Point
- Pond
- Canal

0 1000  
SCALE: 1" = 1000'



# TACTICAL RESPONSE CARD

## FIRE DEPARTMENT RESPONSE GUIDELINES

### COMMAND

- Establish initial command post near the oil & gas location entrance.
- Position should provide a clear view of the entire scene.
- Advise responding units and resources to stage near location entrance.
- Locate operator lease sign on location (located at the entrance/site access).
- If industry personnel are not on location, call the 24-Hour Emergency Contact number located on the sign.
- Establish unified command with operator on-site liaison.
- Develop incident action plan with the operator to mitigate incident.
- Strategy – Always defensive unless a life safety need is identified!

### INCIDENT STABILIZATION

- Implement Hazardous Materials response protocols
- All personnel operating in hazard zones should be in appropriate PPE, to include a personal mobile air monitoring device.
- Establish Hot, Warm, Cold Zones, and ERG zones
- Exposure Concerns ---- Equipment, nearby structures, neighborhoods, roadways, etc.
- Monitor weather conditions, especially wind direction.
- Air monitoring for vulnerable areas and locations around incident.
- Conduct evacuations of citizens, bystanders, and resources at risk.
- Identify and address any water supply and/or foam requirements necessary to mitigate the incident.

### SPECIAL CONSIDERATIONS

- Consider and address any potential impacts to critical receptors identified near the location.
- Consider requiring a fire investigation for any fire and/or explosion.

## INDUSTRY RESPONSE OBJECTIVES

Ensure safety of the public, first responders, employees, and contractors. Minimize impact to the environment and local community. The following response objectives checklist shall be followed:

### SAFETY – PROTECT LIFE

- Evaluate and account for all personnel
- Isolate all potential ignition sources.
- Establish site control (safe perimeter and evacuation routes).
- Contact emergency services as needed (911, Fire, LEPC).
- Identify hazard(s) of emitted material (obtain SDS).
- Monitor air around impacted area.
- Continually assess site hazards/risks.

### RESPONSE – INCIDENT STABILIZATION

- Notify internal personnel and agencies.
- Establish command post and field communications.
- Identify and establish staging areas to support response operations.
- Activate response tactics to control fluids
- Activate response company for equipment and manpower as needed.
- Implement waste handling, disposal and decontamination procedures as needed.
- Assign on-site liaison to the incident commander.
- Establish Air Traffic restriction if required.

### ENVIRONMENTAL – PROTECT THE ENVIRONMENT

- Identify, prioritize, and protect sensitive areas.
- Implement recovery efforts of fluids.
- Verify if water has been impacted.
- Notify appropriate agencies.

## FACILITY INFORMATION

### Well Pad Liquid Storage:

- Oil (BBL) – 15 Tanks
- Water (BBL) – 5 Tanks
- \*500 BBL/Tank
- \*1 Barrel (BBL) = 42 Gallons

### Specific Facility Hazardous Conditions:

- Stage of Facility (Drilling, Production, etc.).
- There are no H2S hazards on site.

Water Supply is NOT Available on Location

### Nearest Foam Resources:

1. Greeley Fire
2. WSFR
3. Front Range Fire