



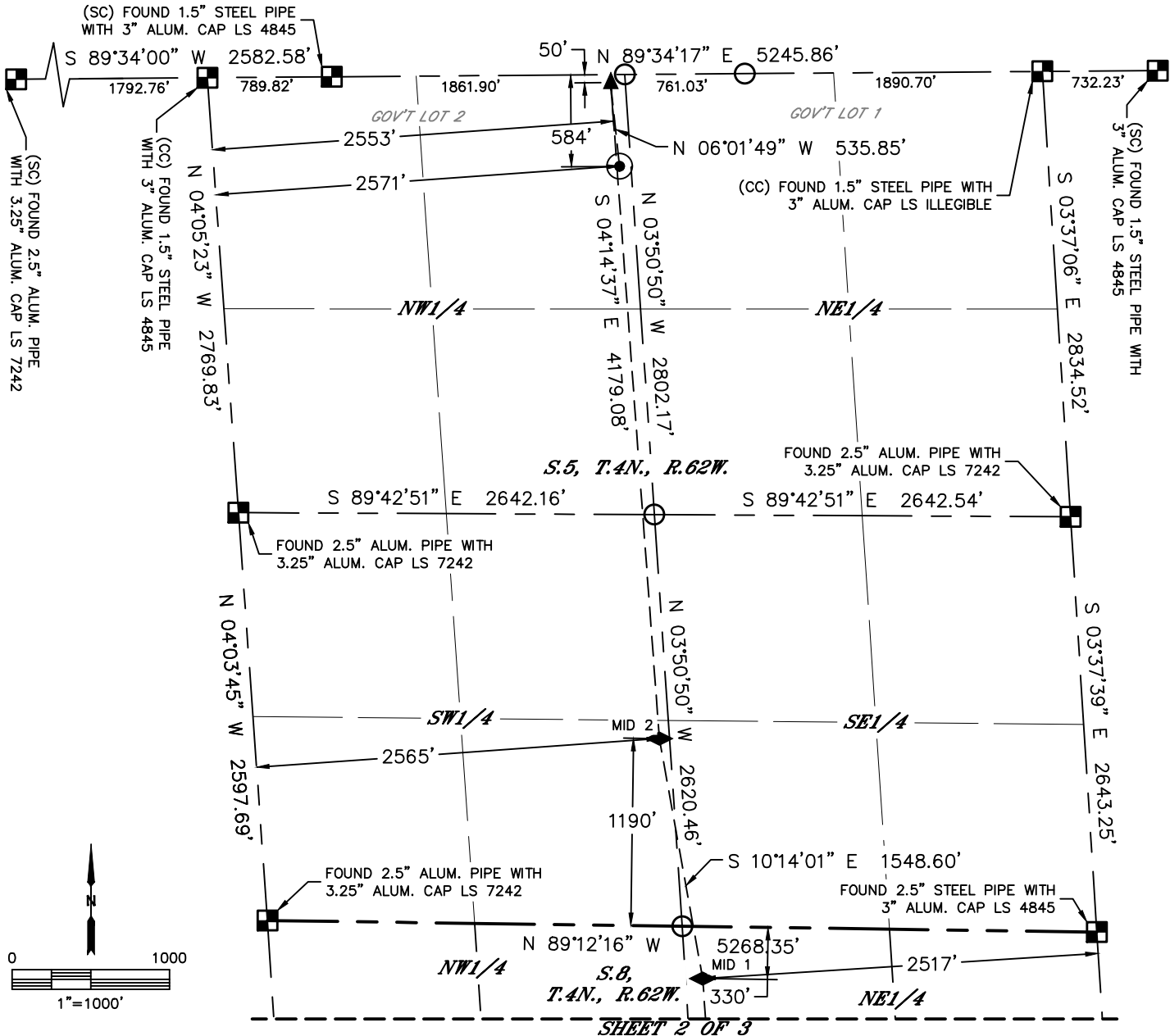
Lat40°, Inc. 6250 W. 10th Street, Unit 2, Greeley, CO 970-515-5294

# WELL LOCATION CERTIFICATE

STATE SEVENTY HOLES K-5-17XRL

BONANZA CREEK ENERGY OPERATING COMPANY LLC

Q: NENW  
SECTION: 5  
TOWNSHIP: 4N  
RANGE: 62W  
6TH. P.M.  
WELD COUNTY, CO



CLIENT: BONANZA CREEK ENERGY					LANDMAN: JOSEPH SCHULTZ				
INSTRUMENT OPERATOR: DUNCAN HOTCHKISS					SURVEY DATE: 9/22/2018		SURFACE USE: RANGELAND		
SHL FOOTAGE				SHL LAT °	SHL LONG °	SHL PDOP	SHL ELEV (FT.)	SHL 1/4/1/4	SHL S-T-R
584	FNL	2571	FWL	40.34740	-104.35059	2.2	4536	NENW	5-4-62
BHL FOOTAGE				BHL LAT °	BHL LONG °	BHL S-T-R	EP LAT °	EP LONG °	EP S-T-R
500	FSL	2237	FEL	40.30631	-104.34670	17-4-62	40.34886	-104.35077	5-4-62

MID 2 LAT°	MID 2 LONG°	MID 2 S-T-R
40.33741	-104.34986	5-4-62

MID 3 LAT°	MID 3 LONG°	MID 3 S-T-R
40.31975	-104.34797	17-4-62

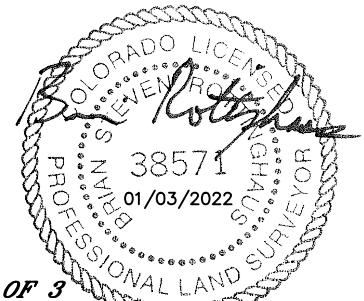
MID 1 LAT°	MID 1 LONG°	MID 1 S-T-R
40.33322	-104.34894	8-4-62

## LEGEND

- = ALIQUOT MONUMENT AS DESCRIBED
- = CALCULATED POSITION
- = SURFACE HOLE LOCATION (SHL)
- ▲ = ENTRY POINT LOCATION (EP)
- ◆ = MID LATERAL TARGET (MID)
- <sub>BH</sub> = BOTTOM HOLE LOCATION (BHL)
- ⊕ = EXISTING WELL
- ⊖ = ABANDONED WELL

## NOTE:

- Bearings shown are Grid Bearings of the Colorado State Plane Coordinate System, North Zone, North American Datum 1983. The lineal dimensions as contained herein are based upon the "U.S. Survey Foot."
- Distances to section lines measured at 90 degrees from said section lines.
- Ground elevations are based on an observed GPS elevation (NAVD 1988 DATUM).
- Latitude and Longitude shown are (NAD 83 DATUM).
- IMPROVEMENTS: See LOCATION DRAWING for all visible improvements within 500' of oil and gas location.
- This map does not represent a boundary survey.



SHEET 1 OF 3

Brian S. Rottinghaus—On behalf of Lat40°, Inc.  
Colorado Licensed Professional  
Land Surveyor No. 38571  
DATE: 01/03/2022  
PROJECT#: 2021310



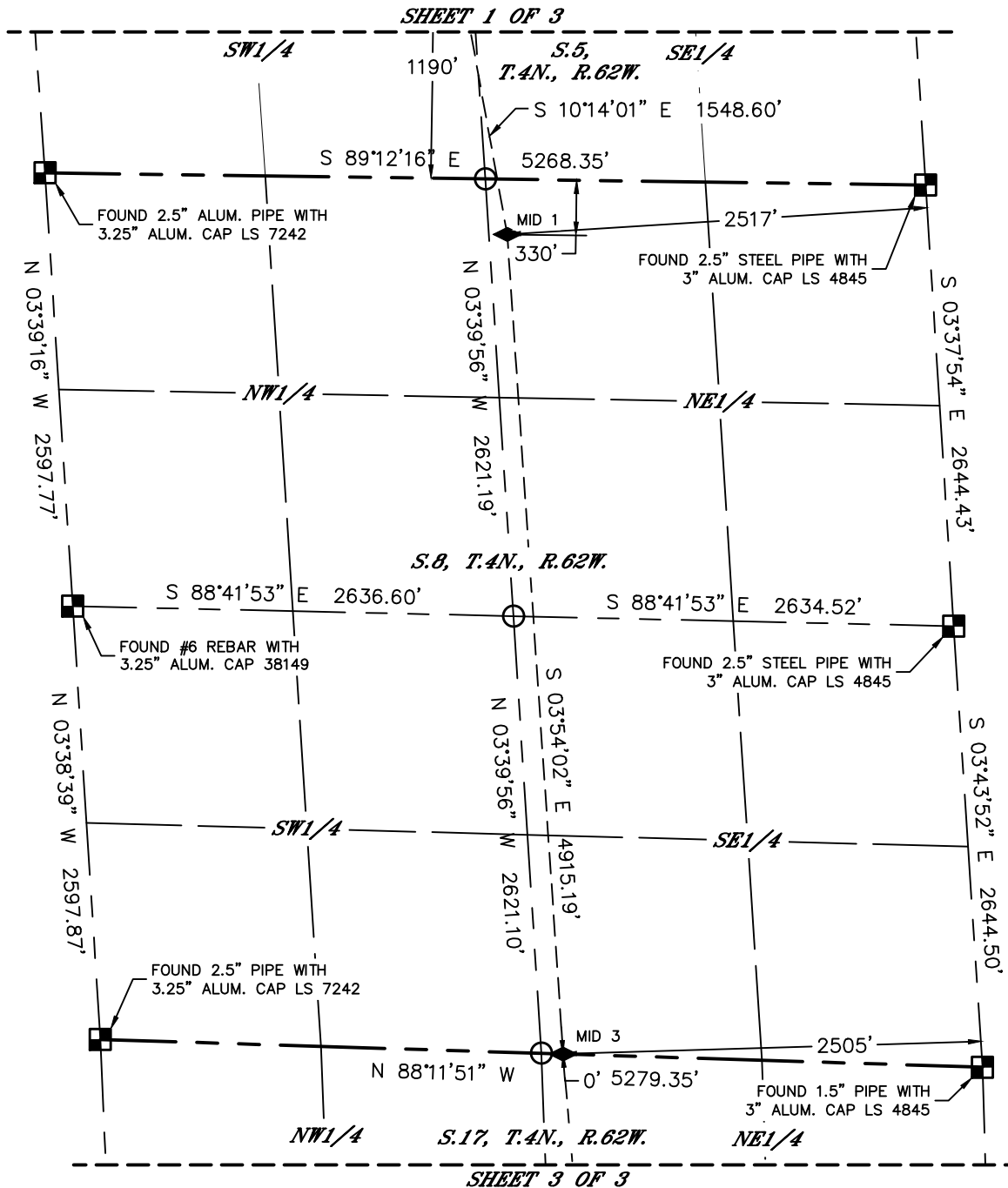
Lat40°, Inc. 6250 W. 10th Street, Unit 2, Greeley, CO 970-515-5294

# WELL LOCATION CERTIFICATE

STATE SEVENTY HOLES K-5-17XRL

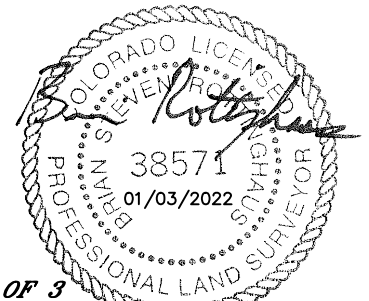
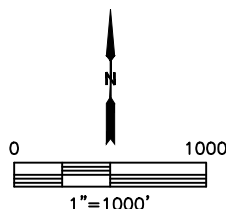
BONANZA CREEK ENERGY OPERATING COMPANY LLC

Q: NENW  
SECTION: 5  
TOWNSHIP: 4N  
RANGE: 62W  
6TH. P.M.  
WELD COUNTY, CO



## LEGEND

- = ALIQUOT MONUMENT AS DESCRIBED
- = CALCULATED POSITION
- = SURFACE HOLE LOCATION (SHL)
- ▲ = ENTRY POINT LOCATION (EP)
- ◆ = MID LATERAL TARGET (MID)
- <sub>BH</sub> = BOTTOM HOLE LOCATION (BHL)
- ⊙ = EXISTING WELL
- ⊙ = ABANDONED WELL



## SHEET 2 OF 3

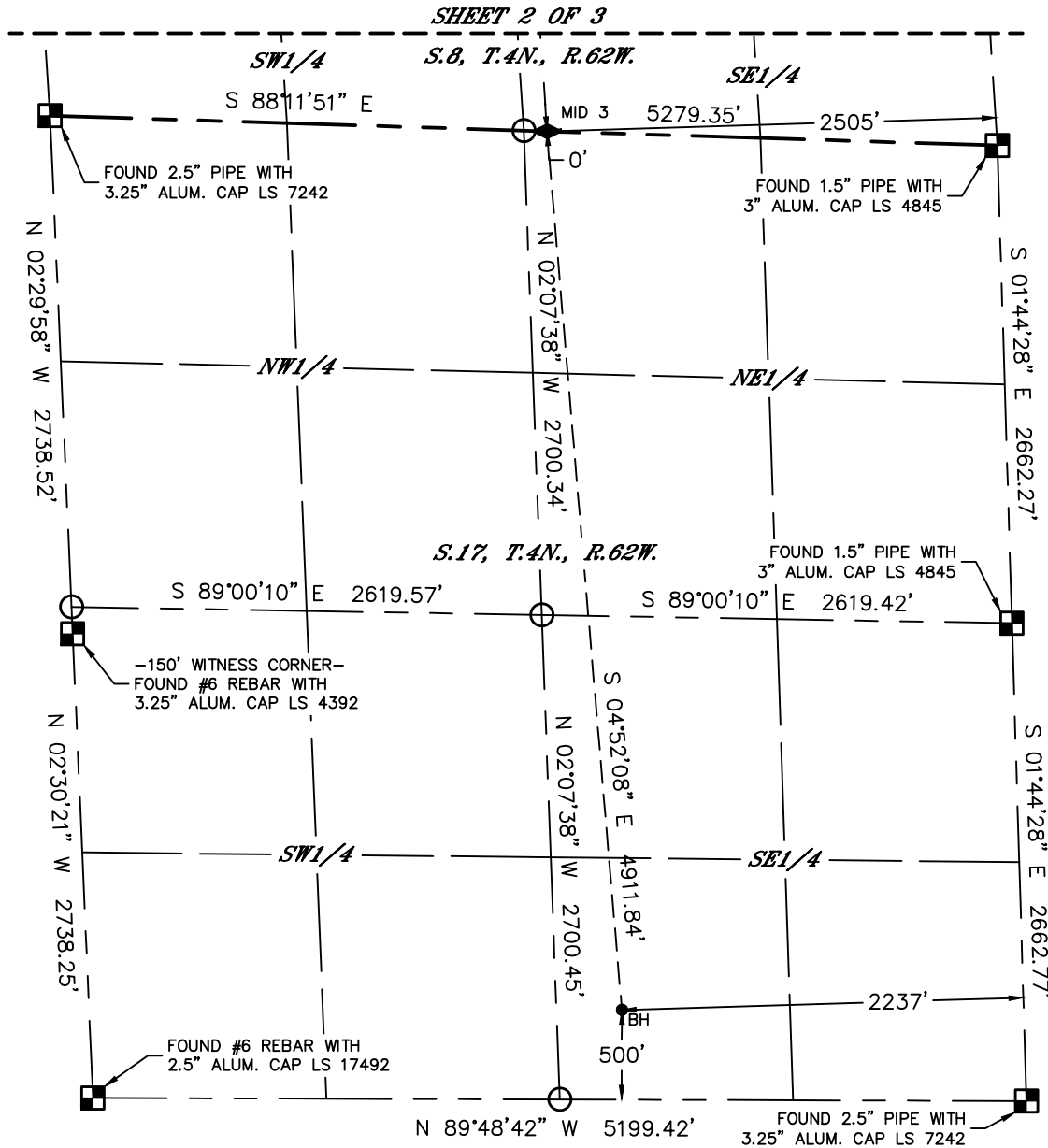
Brian S. Rottinghaus—On behalf of Lat40°, Inc.  
Colorado Licensed Professional  
Land Surveyor No. 38571  
DATE: 01/03/2022  
PROJECT#: 2021310



Lat40°, Inc. 6250 W. 10th Street, Unit 2, Greeley, CO 970-515-5294

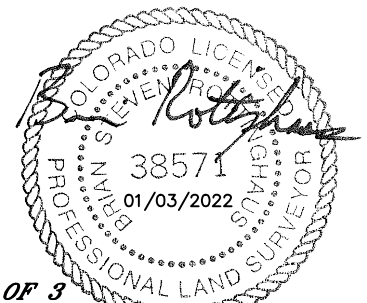
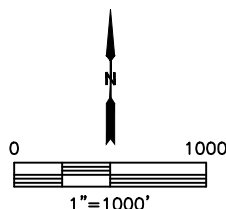
**WELL LOCATION CERTIFICATE**  
**STATE SEVENTY HOLES K-5-17XRL**  
**BONANZA CREEK ENERGY OPERATING COMPANY LLC**

Q: NENW  
SECTION: 5  
TOWNSHIP: 4N  
RANGE: 62W  
6TH. P.M.  
WELD COUNTY, CO



**LEGEND**

- = ALIQUOT MONUMENT AS DESCRIBED
- = CALCULATED POSITION
- = SURFACE HOLE LOCATION (SHL)
- ▲ = ENTRY POINT LOCATION (EP)
- ◆ = MID LATERAL TARGET (MID)
- <sub>BH</sub> = BOTTOM HOLE LOCATION (BHL)
- ⊙ = EXISTING WELL
- ⊙ = ABANDONED WELL



*SHEET 3 OF 3*

Brian S. Rottinghaus—On behalf of Lat40°, Inc.  
Colorado Licensed Professional Land Surveyor No. 38571  
DATE: 01/03/2022  
PROJECT#: 2021310