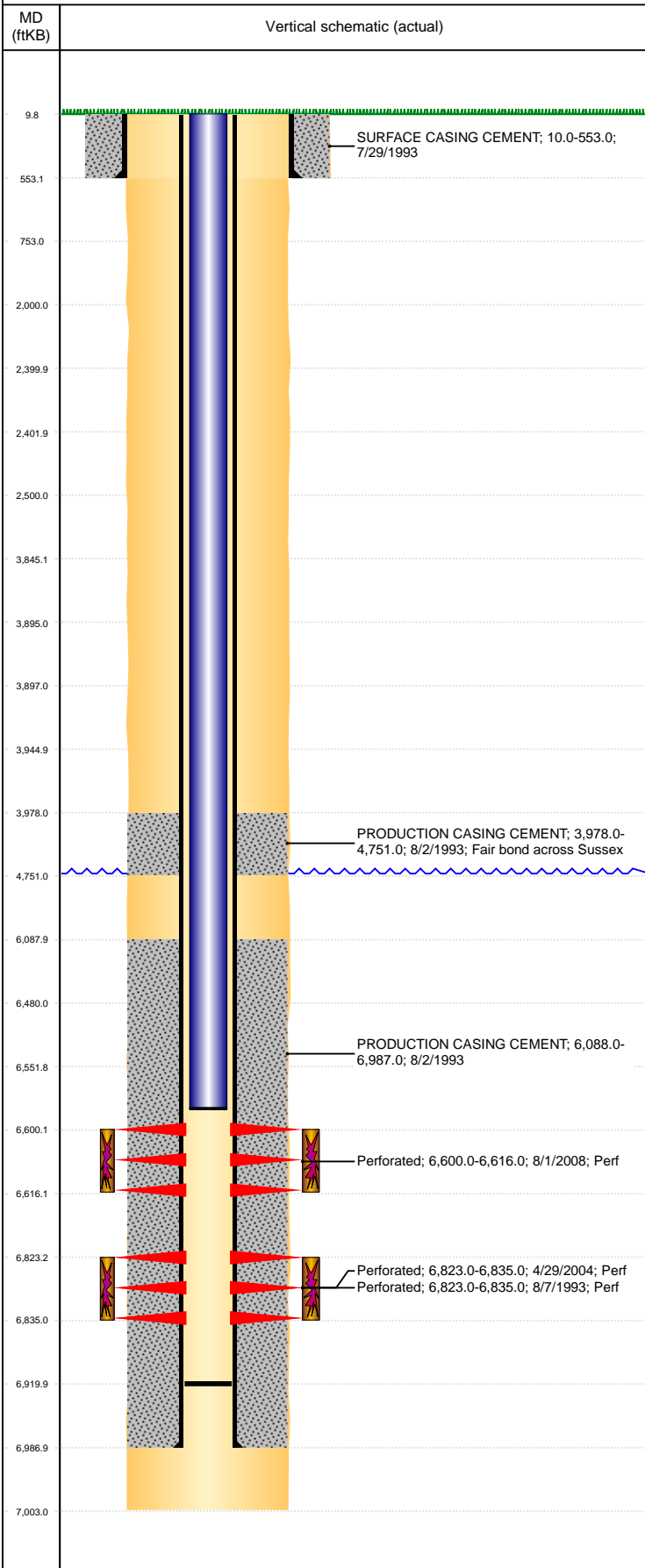


Well Name: SPIKE STATE D12-05

VERTICAL, ORIGINAL HOLE, 2/11/2022 3:36:52 PM



Well Header									
API 05-123-17227		Business Unit DJ BASIN			District 15		Well Config VERTICAL		
KB - GL / MSL (ft... 10.00		Spud Date 7/28/1993		P & A Date		Well Production Status PR			SoRT No
Comment st lse # 70-7882-S									
Surface Location (Congressional)									
Qtr 3 SW	Qtr 4 NW	Section 12	Twonshp 3	Twonsh... N	Range 64	Rng E/... W	Actual Latitude (°) 40.24168624	Actual Longitude (°) -104.50657366	
Wellbore Sections									
Section Des			Size (in)			Act Top, MD (ftKB)		Act Btm, MD (ftKB)	
SURFACE			12 1/4			10		553	
PRODUCTION			7 7/8			553		7,003	
Casing Strings									
Csg Des		Run Date		OD (in)	Wt/Len (lb/ft)	Grade	Top, MD (ftKB)	MD (ftKB)	
Surface Casing		7/29/1993		8 5/8	24.00		10.0	553.0	
Production		8/2/1993		2 7/8	6.50	N-80	10.0	6,987.0	
Cement									
Des				Start Date		Top (ftKB)		Btm (ftKB)	
SURFACE CASING CEMENT				7/29/1993		10.0		553.0	
PRODUCTION CASING CEMENT				8/2/1993		3,978.0		4,751.0	
PRODUCTION CASING CEMENT				8/2/1993		6,088.0		6,987.0	
Zone Statuses									
Zone Name	Status Date	Status	Fluid Type	Job				Prod Method	
CODELL	2/22/2010	PR		RECOMPLETION, 7/29/2008 11:00				Flowing	
CODELL	10/26/2017	PR							
NIOBRARA	10/13/2008	PR							
NIOBRARA	2/22/2010	PR						Flowing	
Perforation Data									
Linked Zone		Bnch/Stg	Entered Shot Total	Top (ftKB)		Btm (ftKB)		Date	
NIOBRARA, ORIGINAL HOLE			64	6,600.00		6,616.00		8/1/2008	
CODELL, ORIGINAL HOLE			66	6,823.00		6,835.00		8/7/1993	
CODELL, ORIGINAL HOLE			48	6,823.00		6,835.00		4/29/2004	
Stimulation Intervals									
Zone			Start Date			Top (ftKB)		Btm (ftKB)	
NIOBRARA, ORIGINAL HOLE			8/27/2008			6,600.0		6,616.0	
CODELL, ORIGINAL HOLE			8/9/1993			6,823.0		6,835.0	
CODELL, ORIGINAL HOLE			5/6/2004			6,823.0		6,835.0	
Other In Hole									
Run Date	Des			Make		OD (in)	Top (ftKB)	Btm (ftKB)	
Logs									
Date		Type				Top, MD (ftKB)		Btm, MD (ftKB)	
8/1/1993		Compensated Density				4,000.0		6,887.0	
8/1/1993		Induction				4,100.0		4,500.0	
8/7/1993		Cement Bond				3,900.0		6,929.0	
Plug Back Total Depths									
Date		Type		Com				Depth (ftKB)	
7/31/2008		SAND PLUG						6,655.0	
9/2/2008		FILL						6,920.0	