



January 19, 2022

Mr. Austin Lee
HSE Advisor
Kerr-McGee Oil & Gas Onshore LP
501 N Division Blvd.
Platteville, Colorado 80651

**Re: Colorado Oil & Gas Conservation Commission (COGCC)
Form 4 (Interim Reclamation Completion Notice)
WARNER 4-18 (305848)
Kerr-McGee Oil & Gas Onshore LP (Operator: 47120)**

Dear Mr. Lee,

Apex Companies, LLC (Apex) is presenting this letter to Kerr-McGee Oil & Gas Onshore LP (Kerr-McGee) documenting the results of a vegetation assessment that demonstrates successful completion of interim reclamation efforts, per COGCC Rule 1003, on the above-referenced location. Attached is a topographic location map and a site map with additional location information.

Site visits and the completed vegetation assessment confirmed that the reduced drilling and construction footprint has been recontoured and returned to the landowner for cropland and agricultural use. Based on this result, interim reclamation has been achieved as defined by COGCC Rule 1003.e (1). The photographs required by Rule 1003.e (3) are attached as well as a site map that illustrates the photo points.

On June 3, 2021, the site was visited and four photographs documenting crop establishment on all sides of the location were taken, along with one photograph illustrating planted crops.

Apex appreciates the opportunity to provide environmental consulting services to Kerr-McGee with this project. Should you have any questions or require additional information, please do not hesitate to contact me.

Sincerely,
Apex Companies, LLC

Scott M Taylor

Scott Taylor
Environmental Scientist 2
Scott.Taylor@Apexcos.com
781-635-2420

Reviewed By:

Ken McCarron

Ken McCarron
Natural Resources Program Manager
Ken.McCarron@Apexcos.com
804-205-7737

Attachments:

1. Topographic Location Map
2. Vegetation Survey Site Map
3. Vegetation Assessment Photo Log

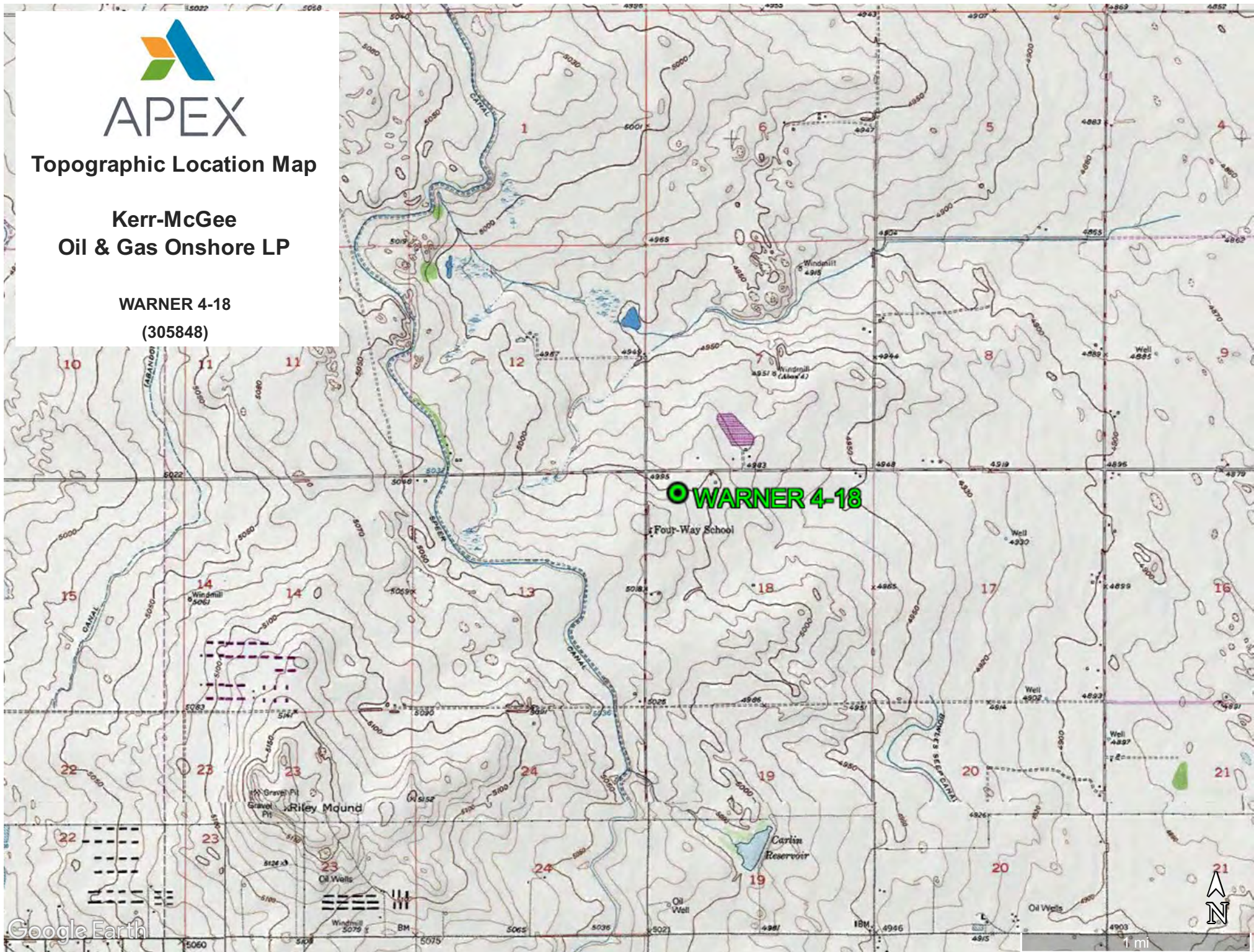


APEX

Topographic Location Map

Kerr-McGee
Oil & Gas Onshore LP

WARNER 4-18
(305848)

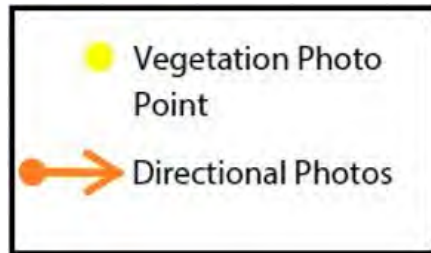




Vegetation Survey Site Map

Kerr-McGee Oil & Gas Onshore LP

WARNER 4-18
(305848)



Legal Description: NWNW, Sec. 18, 2N-65W

Lat/Long: 40.144510 / -104.713160

County: Weld

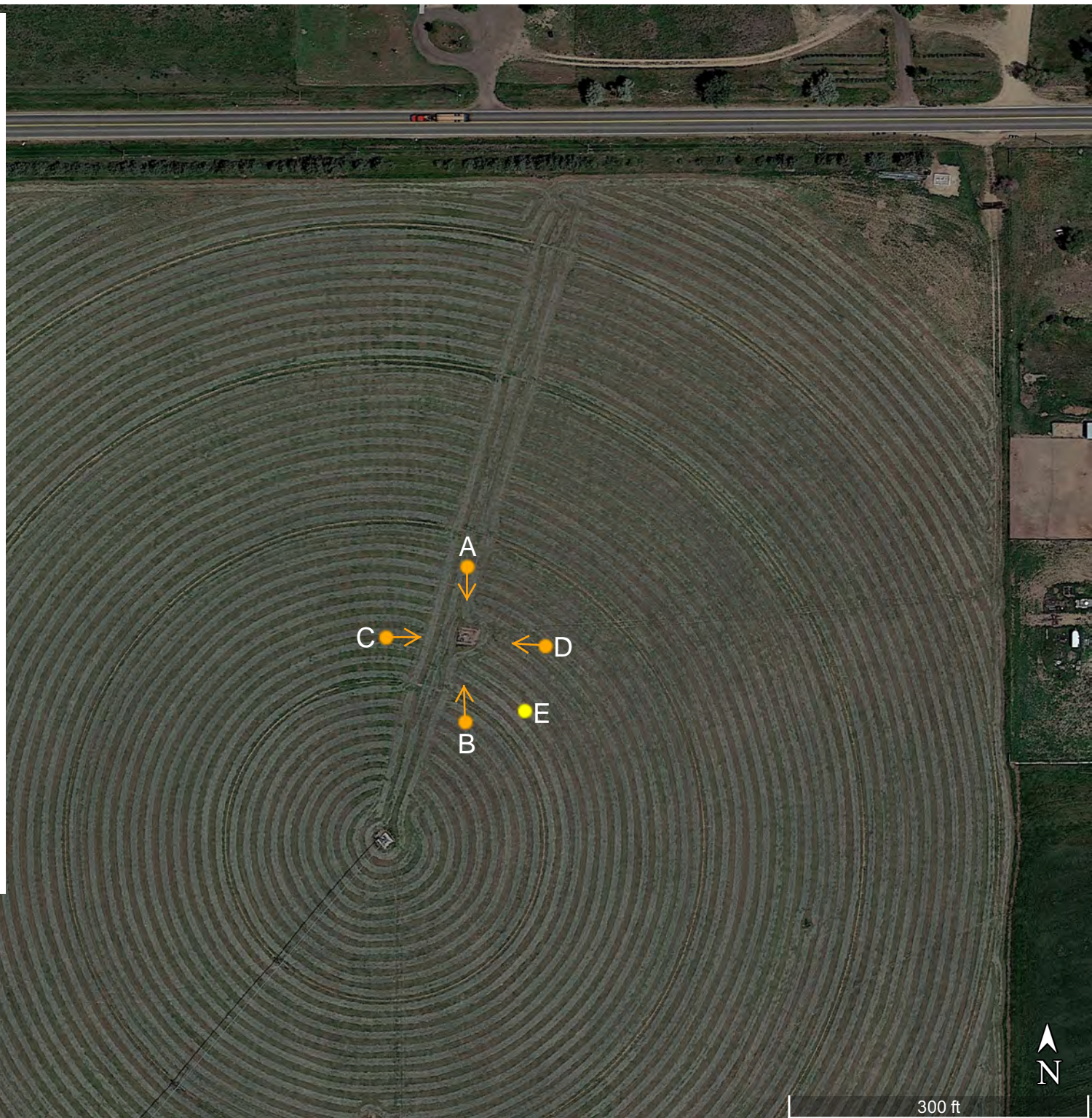
Land Use: Crop Land

Inspector: C. Taylor

Assessment Date: 06/03/2021

Aerial Imagery Date: 06/10/2021

**Please reference coordinate disclaimer on the
photo log pages.*



Vegetation Assessment Photo Log

Date Completed - 06/03/2021

Client - **Kerr-McGee Oil & Gas Onshore LP**
Location Name (ID) - **WARNER 4-18 (305848)**



Photo Point A: North of Disturbance - Facing South



Photo Point B: South of Disturbance - Facing North



Photo Point C: West of Disturbance - Facing East



Photo Point D: East of Disturbance - Facing West

*Geographic coordinates provided in the borders of all attached photos are based on points identified by the mobile phone or tablet which collected the photo. Coordinate accuracy in this format is typically no greater than 5 meters, while the points illustrated in the site diagram associated with this submittal were collected with a high accuracy GPS unit with sub-meter accuracy. Discrepancies between the site diagram and photo coordinates will exist.

Vegetation Assessment Photo Log

Date Completed - 06/03/2021

Client - **Kerr-McGee Oil & Gas Onshore LP**
Location Name (ID) - **WARNER 4-18 (305848)**



Photo Point E: Reference Crop Vegetation - Facing South