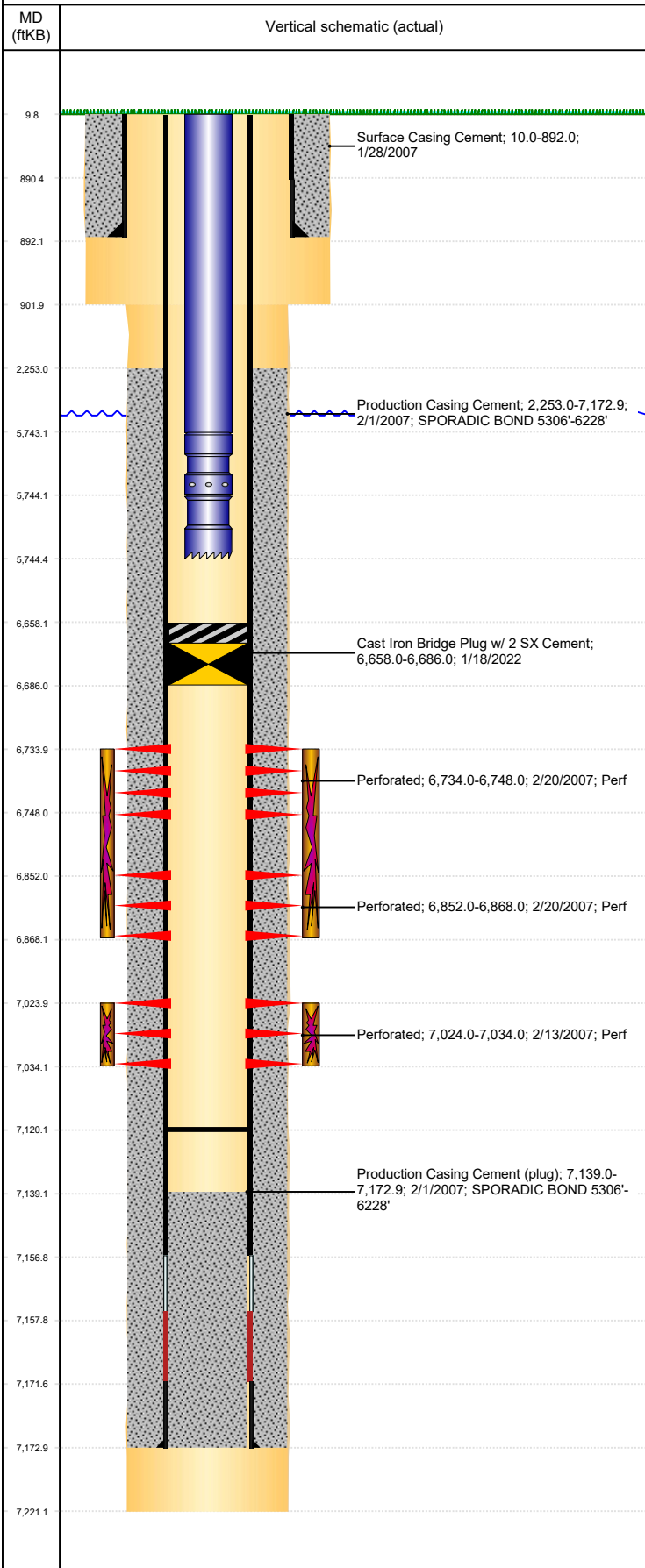


Well Name: PETTINGER USX AB35-08

VERTICAL, ORIGINAL HOLE, 2/5/2022 4:56:42 AM



Well Header									
API 05-123-24535		Business Unit DJ BASIN			District 15		Well Config VERTICAL		
KB - GL / MSL (ft... 10.00		Spud Date 1/27/2007		P & A Date		Well Production Status TA			SoRT Yes
Comment PUSH FP TO 7120 DISCREPANCY: DRLG RPT TD 7220'; LOGGER TD 7221', STATE RPT TD 7231', USED LOGGER TD									
Surface Location (Congressional)									
Qtr 3 SE	Qtr 4 NE	Section 35	Twnshp 7	Twnsh... N	Range 64	Rng E/... W	Actual Latitude (°) 40.53172473	Actual Longitude (°) -104.50950732	
Wellbore Sections									
Section Des			Size (in)			Act Top, MD (ftKB)		Act Btm, MD (ftKB)	
SURFACE			12 1/4			10		902	
PRODUCTION			7 7/8			902		7,221	
Casing Strings									
Csg Des		Run Date		OD (in)	Wt/Len (lb/ft)	Grade	Top, MD (ftKB)	MD (ftKB)	
Surface		1/28/2007		8 5/8	24.00	J-55	10.0	892.0	
Production		2/1/2007		4 1/2	11.60	M-80	10.0	7,172.9	
Cement									
Des				Start Date		Top (ftKB)		Btm (ftKB)	
Surface Casing Cement				1/28/2007		10.0		892.0	
Production Casing Cement				2/1/2007		2,253.0		7,172.9	
Zone Statuses									
Zone Name		Status Date	Status	Fluid Type	Job			Prod Method	
CODELL		2/22/2007	PR		DRILLING/COMPLETION - ORIGINAL, 1/27/2007...				
CODELL		1/18/2022	TA						
NIOBRARA		2/22/2007	PR		DRILLING/COMPLETION - ORIGINAL, 1/27/2007...				
NIOBRARA		1/18/2022	TA						
Perforation Data									
Linked Zone			Bnch/Stg	Entered Shot Total	Top (ftKB)		Btm (ftKB)		Date
NIOBRARA, ORIGINAL HOLE				56	6,734.00		6,748.00		2/20/2007
NIOBRARA, ORIGINAL HOLE				64	6,852.00		6,868.00		2/20/2007
CODELL, ORIGINAL HOLE				40	7,024.00		7,034.00		2/13/2007
Stimulation Intervals									
Zone				Start Date		Top (ftKB)		Btm (ftKB)	
NIOBRARA, ORIGINAL HOLE				2/20/2007		6,734.0		6,868.0	
CODELL, ORIGINAL HOLE				2/20/2007		7,024.0		7,034.0	
Other In Hole									
Run Date		Des			Make		OD (in)	Top (ftKB)	Btm (ftKB)
1/18/2022		Cast Iron Bridge Plug w/ 2 SX Cement					3.99	6,658.0	6,686.0
Logs									
Date		Type				Top, MD (ftKB)		Btm, MD (ftKB)	
1/31/2007		COMPENSATED DENSITY				2,850.0		7,201.0	
1/31/2007		INDUCTION				892.0		7,221.0	
2/13/2007		CBL/CCL/GR				2,095.0		7,137.0	
2/8/2012		GYRO				10.0		7,000.0	
Plug Back Total Depths									
Date		Type		Com				Depth (ftKB)	
2/13/2007		FILL		DEPTH LOGGER ON CBL				7,139.0	
2/28/2007		PLUG REMNANTS		DRILL CIPF AND CLEAN OUT TO 7120'				7,120.0	