



Fundare Resources Company, LLC

Weld County, CO (NAD 83)

S29-T10N-R58W

RAZOR #29H-3213

OH

Plan: #1 (01.29.22)

Standard Planning Report

29 January, 2022



Project: Weld County, CO (NAD 83)
Site: S29-T10N-R58W
Well: RAZOR #29H-3213
Wellbore: OH
Plan: #1 (01.29.22)

WELL DETAILS: RAZOR #29H-3213

21' KB @ 4791.80usft
Ground Level: 4770.80

+N/-S	+E/-W	Northing	Easting	Latitude	Longitude
0.00	0.00	1542188.27	3447478.71	40.810492	-103.883436

US State Plane 1983
Colorado Northern Zone



Azimuths to True North
Magnetic North: 7.09°

Magnetic Field
Strength: 52263.0nT
Dip Angle: 66.99°
Date: 1/25/2022
Model: HRGM

SECTION DETAILS

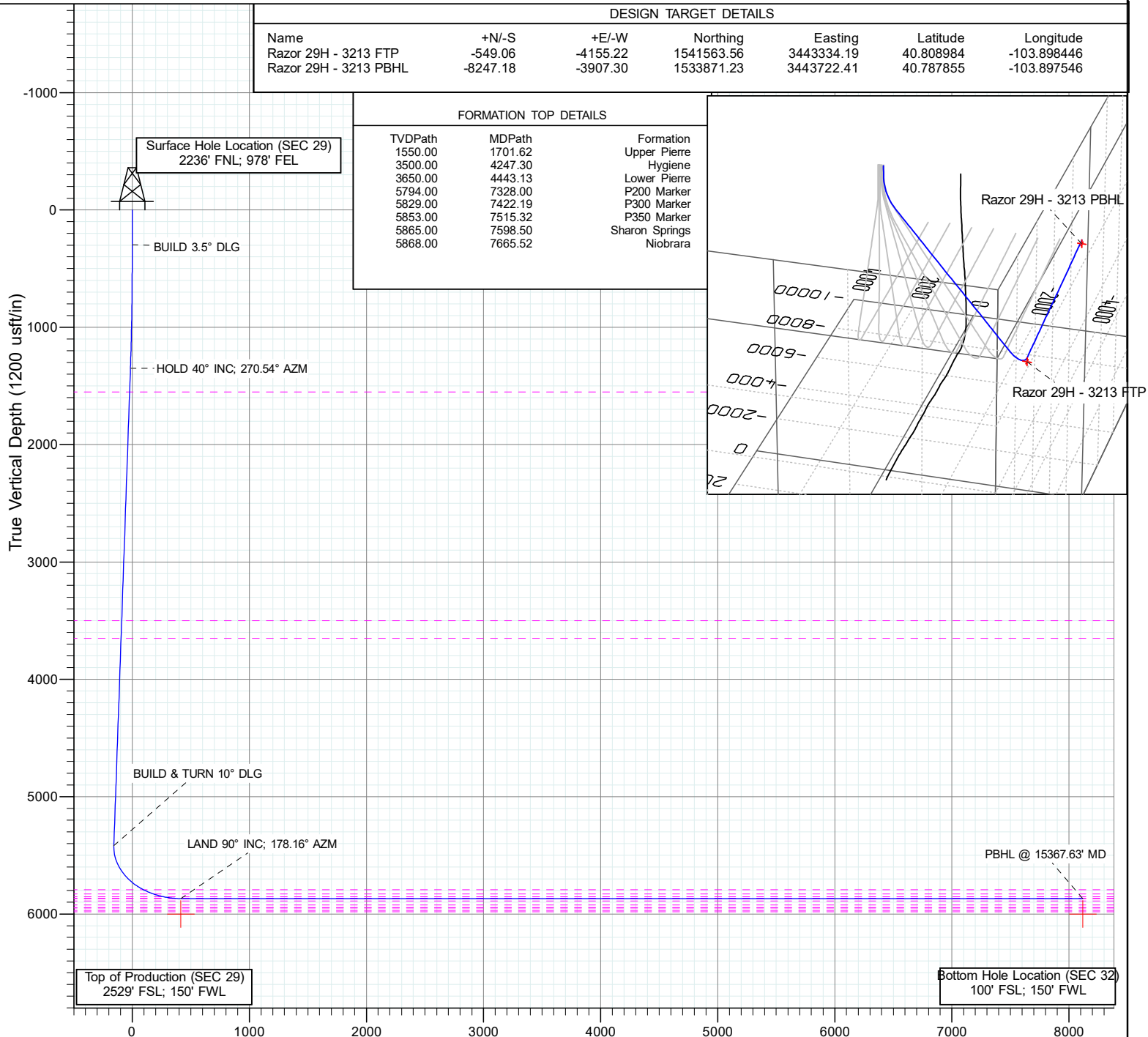
MD	Inc	Azi	TVD	+N/-S	+E/-W	Dleg	TFace	VSect	Annotation
0.00	0.00	0.00	0.00	0.00	0.00	0.00	0.00	0.00	
298.00	0.00	0.00	298.00	0.00	0.00	0.00	0.00	0.00	
1440.97	40.00	270.54	1350.34	3.59	-383.04	3.50	270.54	-15.89	BUILD 3.5° DLG
6750.21	40.00	270.54	5417.23	35.57	-3795.88	0.00	0.00	-157.43	HOLD 40° INC; 270.54° AZM
7665.52	90.00	178.16	5868.00	-549.06	-4155.22	10.00	-91.82	415.35	BUILD & TURN 10° DLG
15367.63	90.00	178.16	5868.00	-8247.18	-3907.30	0.00	0.00	8117.47	LAND 90° INC; 178.16° AZM
									PBHL @ 15367.63' MD

DESIGN TARGET DETAILS

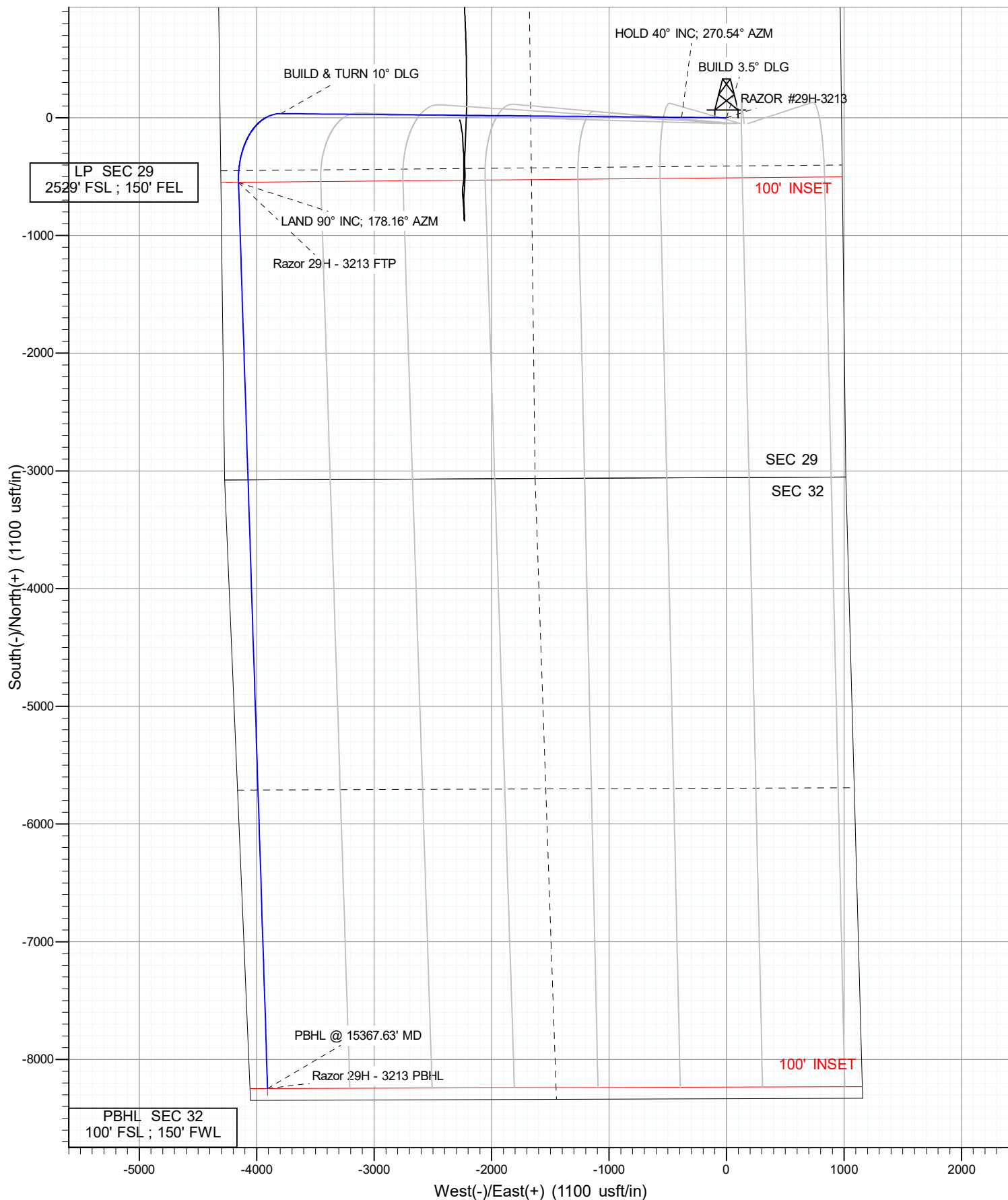
Name	+N/-S	+E/-W	Northing	Easting	Latitude	Longitude
Razor 29H - 3213 FTP	-549.06	-4155.22	1541563.56	3443334.19	40.808984	-103.898446
Razor 29H - 3213 PBHL	-8247.18	-3907.30	1533871.23	3443722.41	40.787855	-103.897546

FORMATION TOP DETAILS

TVDPath	MDPath	Formation
1550.00	1701.62	Upper Pierre
3500.00	4247.30	Hygiene
3650.00	4443.13	Lower Pierre
5794.00	7328.00	P200 Marker
5829.00	7422.19	P300 Marker
5853.00	7515.32	P350 Marker
5865.00	7598.50	Sharon Springs
5868.00	7665.52	Niobrara



Vertical Section at 178.16° (1200 usft/in)



Database:	US EDM 5000 Multi Users DB	Local Co-ordinate Reference:	Well RAZOR #29H-3213
Company:	Fundare Resources Company, LLC	TVD Reference:	21' KB @ 4791.80usft
Project:	Weld County, CO (NAD 83)	MD Reference:	21' KB @ 4791.80usft
Site:	S29-T10N-R58W	North Reference:	True
Well:	RAZOR #29H-3213	Survey Calculation Method:	Minimum Curvature
Wellbore:	OH		
Design:	#1 (01.29.22)		

Project	Weld County, CO (NAD 83)		
Map System:	US State Plane 1983	System Datum:	Mean Sea Level
Geo Datum:	North American Datum 1983		
Map Zone:	Colorado Northern Zone		

Site		S29-T10N-R58W			
Site Position:		Northing:	1,542,123.68 usft	Latitude:	40.810431
From:	Lat/Long	Easting:	3,445,148.09 usft	Longitude:	-103.891858
Position Uncertainty:	0.00 usft	Slot Radius:	13-3/16 "	Grid Convergence:	1.04 °

Well	RAZOR #29H-3213					
Well Position	+N/-S	0.00 usft	Northing:	1,542,188.27 usft	Latitude:	40.810492
	+E/-W	0.00 usft	Easting:	3,447,478.71 usft	Longitude:	-103.883436
Position Uncertainty		0.00 usft	Wellhead Elevation:	usft	Ground Level:	4,770.80 usft

Wellbore	OH				
Magnetics	Model Name	Sample Date	Declination (°)	Dip Angle (°)	Field Strength (nT)
	HRGM	1/25/2022	7.09	66.99	52,262.97614982

Design	#1 (01.29.22)			
Audit Notes:				
Version:	Phase:	PLAN	Tie On Depth:	0.00
Vertical Section:	Depth From (TVD) (usft)	+N/-S (usft)	+E/-W (usft)	Direction (°)
	0.00	0.00	0.00	178.16

Plan Sections										
Measured Depth (usft)	Inclination (°)	Azimuth (°)	Vertical Depth (usft)	+N/-S (usft)	+E/-W (usft)	Dogleg Rate (°/100usft)	Build Rate (°/100usft)	Turn Rate (°/100usft)	TFO (°)	Target
0.00	0.00	0.00	0.00	0.00	0.00	0.00	0.00	0.00	0.00	
298.00	0.00	0.00	298.00	0.00	0.00	0.00	0.00	0.00	0.00	
1,440.97	40.00	270.54	1,350.34	3.59	-383.04	3.50	3.50	0.00	270.54	
6,750.21	40.00	270.54	5,417.23	35.57	-3,795.88	0.00	0.00	0.00	0.00	
7,665.52	90.00	178.16	5,868.00	-549.06	-4,155.22	10.00	5.46	-10.09	-91.82	
15,367.63	90.00	178.16	5,868.00	-8,247.18	-3,907.30	0.00	0.00	0.00	0.00	

Database: US EDM 5000 Multi Users DB
Company: Fundare Resources Company, LLC
Project: Weld County, CO (NAD 83)
Site: S29-T10N-R58W
Well: RAZOR #29H-3213
Wellbore: OH
Design: #1 (01.29.22)

Local Co-ordinate Reference: Well RAZOR #29H-3213
TVD Reference: 21' KB @ 4791.80usft
MD Reference: 21' KB @ 4791.80usft
North Reference: True
Survey Calculation Method: Minimum Curvature

Planned Survey

Measured Depth (usft)	Inclination (°)	Azimuth (°)	Vertical Depth (usft)	+N/-S (usft)	+E/-W (usft)	Vertical Section (usft)	Dogleg Rate (°/100usft)	Build Rate (°/100u)	Comments / Formations
0.00	0.00	0.00	0.00	0.00	0.00	0.00	0.00	0.00	
100.00	0.00	0.00	100.00	0.00	0.00	0.00	0.00	0.00	
200.00	0.00	0.00	200.00	0.00	0.00	0.00	0.00	0.00	
298.00	0.00	0.00	298.00	0.00	0.00	0.00	0.00	0.00	BUILD 3.5° DLG
300.00	0.07	270.54	300.00	0.00	0.00	0.00	3.50	3.50	
400.00	3.57	270.54	399.93	0.03	-3.18	-0.13	3.50	3.50	
500.00	7.07	270.54	499.49	0.12	-12.45	-0.52	3.50	3.50	
600.00	10.57	270.54	598.29	0.26	-27.78	-1.15	3.50	3.50	
700.00	14.07	270.54	695.97	0.46	-49.11	-2.04	3.50	3.50	
800.00	17.57	270.54	792.17	0.72	-76.37	-3.17	3.50	3.50	
900.00	21.07	270.54	886.52	1.03	-109.44	-4.54	3.50	3.50	
1,000.00	24.57	270.54	978.68	1.39	-148.22	-6.15	3.50	3.50	
1,100.00	28.07	270.54	1,068.30	1.80	-192.55	-7.99	3.50	3.50	
1,200.00	31.57	270.54	1,155.05	2.27	-242.27	-10.05	3.50	3.50	
1,300.00	35.07	270.54	1,238.60	2.78	-297.19	-12.33	3.50	3.50	
1,400.00	38.57	270.54	1,318.63	3.35	-357.11	-14.81	3.50	3.50	
1,440.97	40.00	270.54	1,350.34	3.59	-383.05	-15.89	3.50	3.50	HOLD 40° INC; 270.54° AZM
1,500.00	40.00	270.54	1,395.56	3.94	-420.99	-17.46	0.00	0.00	
1,600.00	40.00	270.54	1,472.16	4.55	-485.27	-20.13	0.00	0.00	
1,700.00	40.00	270.54	1,548.76	5.15	-549.55	-22.79	0.00	0.00	
1,800.00	40.00	270.54	1,625.36	5.75	-613.83	-25.46	0.00	0.00	
1,900.00	40.00	270.54	1,701.96	6.35	-678.12	-28.12	0.00	0.00	
2,000.00	40.00	270.54	1,778.56	6.96	-742.40	-30.79	0.00	0.00	
2,100.00	40.00	270.54	1,855.16	7.56	-806.68	-33.46	0.00	0.00	
2,200.00	40.00	270.54	1,931.76	8.16	-870.96	-36.12	0.00	0.00	
2,300.00	40.00	270.54	2,008.36	8.76	-935.24	-38.79	0.00	0.00	
2,400.00	40.00	270.54	2,084.96	9.37	-999.52	-41.45	0.00	0.00	
2,500.00	40.00	270.54	2,161.56	9.97	-1,063.80	-44.12	0.00	0.00	
2,600.00	40.00	270.54	2,238.16	10.57	-1,128.08	-46.79	0.00	0.00	
2,700.00	40.00	270.54	2,314.76	11.17	-1,192.36	-49.45	0.00	0.00	
2,800.00	40.00	270.54	2,391.36	11.77	-1,256.65	-52.12	0.00	0.00	
2,900.00	40.00	270.54	2,467.96	12.38	-1,320.93	-54.78	0.00	0.00	
3,000.00	40.00	270.54	2,544.56	12.98	-1,385.21	-57.45	0.00	0.00	
3,100.00	40.00	270.54	2,621.16	13.58	-1,449.49	-60.12	0.00	0.00	
3,200.00	40.00	270.54	2,697.76	14.18	-1,513.77	-62.78	0.00	0.00	
3,300.00	40.00	270.54	2,774.36	14.79	-1,578.05	-65.45	0.00	0.00	
3,400.00	40.00	270.54	2,850.96	15.39	-1,642.33	-68.11	0.00	0.00	
3,500.00	40.00	270.54	2,927.56	15.99	-1,706.61	-70.78	0.00	0.00	
3,600.00	40.00	270.54	3,004.16	16.59	-1,770.89	-73.45	0.00	0.00	
3,700.00	40.00	270.54	3,080.76	17.20	-1,835.18	-76.11	0.00	0.00	
3,800.00	40.00	270.54	3,157.36	17.80	-1,899.46	-78.78	0.00	0.00	
3,900.00	40.00	270.54	3,233.96	18.40	-1,963.74	-81.44	0.00	0.00	
4,000.00	40.00	270.54	3,310.56	19.00	-2,028.02	-84.11	0.00	0.00	
4,100.00	40.00	270.54	3,387.16	19.60	-2,092.30	-86.78	0.00	0.00	
4,200.00	40.00	270.54	3,463.76	20.21	-2,156.58	-89.44	0.00	0.00	
4,300.00	40.00	270.54	3,540.36	20.81	-2,220.86	-92.11	0.00	0.00	
4,400.00	40.00	270.54	3,616.96	21.41	-2,285.14	-94.77	0.00	0.00	
4,500.00	40.00	270.54	3,693.56	22.01	-2,349.42	-97.44	0.00	0.00	
4,600.00	40.00	270.54	3,770.16	22.62	-2,413.71	-100.10	0.00	0.00	
4,700.00	40.00	270.54	3,846.77	23.22	-2,477.99	-102.77	0.00	0.00	
4,800.00	40.00	270.54	3,923.37	23.82	-2,542.27	-105.44	0.00	0.00	
4,900.00	40.00	270.54	3,999.97	24.42	-2,606.55	-108.10	0.00	0.00	

Database: US EDM 5000 Multi Users DB
Company: Fundare Resources Company, LLC
Project: Weld County, CO (NAD 83)
Site: S29-T10N-R58W
Well: RAZOR #29H-3213
Wellbore: OH
Design: #1 (01.29.22)

Local Co-ordinate Reference: Well RAZOR #29H-3213
TVD Reference: 21' KB @ 4791.80usft
MD Reference: 21' KB @ 4791.80usft
North Reference: True
Survey Calculation Method: Minimum Curvature

Planned Survey

Measured Depth (usft)	Inclination (°)	Azimuth (°)	Vertical Depth (usft)	+N/-S (usft)	+E/-W (usft)	Vertical Section (usft)	Dogleg Rate (°/100usft)	Build Rate (°/100u)	Comments / Formations
5,000.00	40.00	270.54	4,076.57	25.03	-2,670.83	-110.77	0.00	0.00	
5,100.00	40.00	270.54	4,153.17	25.63	-2,735.11	-113.43	0.00	0.00	
5,200.00	40.00	270.54	4,229.77	26.23	-2,799.39	-116.10	0.00	0.00	
5,300.00	40.00	270.54	4,306.37	26.83	-2,863.67	-118.77	0.00	0.00	
5,400.00	40.00	270.54	4,382.97	27.43	-2,927.95	-121.43	0.00	0.00	
5,500.00	40.00	270.54	4,459.57	28.04	-2,992.23	-124.10	0.00	0.00	
5,600.00	40.00	270.54	4,536.17	28.64	-3,056.52	-126.76	0.00	0.00	
5,700.00	40.00	270.54	4,612.77	29.24	-3,120.80	-129.43	0.00	0.00	
5,800.00	40.00	270.54	4,689.37	29.84	-3,185.08	-132.10	0.00	0.00	
5,900.00	40.00	270.54	4,765.97	30.45	-3,249.36	-134.76	0.00	0.00	
6,000.00	40.00	270.54	4,842.57	31.05	-3,313.64	-137.43	0.00	0.00	
6,100.00	40.00	270.54	4,919.17	31.65	-3,377.92	-140.09	0.00	0.00	
6,200.00	40.00	270.54	4,995.77	32.25	-3,442.20	-142.76	0.00	0.00	
6,300.00	40.00	270.54	5,072.37	32.86	-3,506.48	-145.43	0.00	0.00	
6,400.00	40.00	270.54	5,148.97	33.46	-3,570.76	-148.09	0.00	0.00	
6,500.00	40.00	270.54	5,225.57	34.06	-3,635.05	-150.76	0.00	0.00	
6,600.00	40.00	270.54	5,302.17	34.66	-3,699.33	-153.42	0.00	0.00	
6,700.00	40.00	270.54	5,378.77	35.26	-3,763.61	-156.09	0.00	0.00	
6,750.21	40.00	270.54	5,417.23	35.57	-3,795.88	-157.43	0.00	0.00	BUILD & TURN 10° DLG
6,800.00	40.10	262.80	5,455.36	33.71	-3,827.82	-156.59	10.00	0.20	
6,900.00	41.82	247.74	5,531.06	17.00	-3,890.78	-141.92	10.00	1.72	
7,000.00	45.33	234.13	5,603.66	-16.55	-3,950.61	-110.31	10.00	3.51	
7,100.00	50.26	222.36	5,670.95	-65.92	-4,005.47	-62.73	10.00	4.92	
7,200.00	56.20	212.30	5,730.89	-129.61	-4,053.70	-0.62	10.00	5.94	
7,300.00	62.85	203.63	5,781.65	-205.68	-4,093.84	74.12	10.00	6.65	
7,400.00	69.97	195.96	5,821.69	-291.82	-4,124.66	159.24	10.00	7.12	
7,500.00	77.39	188.97	5,849.81	-385.42	-4,145.23	252.13	10.00	7.42	
7,600.00	84.98	182.38	5,865.13	-483.64	-4,154.92	349.98	10.00	7.59	
7,665.52	90.00	178.16	5,868.00	-549.06	-4,155.22	415.36	10.00	7.66	LAND 90° INC; 178.16° AZM
7,700.00	90.00	178.16	5,868.00	-583.52	-4,154.11	449.84	0.00	0.00	
7,800.00	90.00	178.16	5,868.00	-683.47	-4,150.89	549.84	0.00	0.00	
7,900.00	90.00	178.16	5,868.00	-783.42	-4,147.67	649.84	0.00	0.00	
8,000.00	90.00	178.16	5,868.00	-883.36	-4,144.45	749.84	0.00	0.00	
8,100.00	90.00	178.16	5,868.00	-983.31	-4,141.23	849.84	0.00	0.00	
8,200.00	90.00	178.16	5,868.00	-1,083.26	-4,138.02	949.84	0.00	0.00	
8,300.00	90.00	178.16	5,868.00	-1,183.21	-4,134.80	1,049.84	0.00	0.00	
8,400.00	90.00	178.16	5,868.00	-1,283.16	-4,131.58	1,149.84	0.00	0.00	
8,500.00	90.00	178.16	5,868.00	-1,383.11	-4,128.36	1,249.84	0.00	0.00	
8,600.00	90.00	178.16	5,868.00	-1,483.05	-4,125.14	1,349.84	0.00	0.00	
8,700.00	90.00	178.16	5,868.00	-1,583.00	-4,121.92	1,449.84	0.00	0.00	
8,800.00	90.00	178.16	5,868.00	-1,682.95	-4,118.70	1,549.84	0.00	0.00	
8,900.00	90.00	178.16	5,868.00	-1,782.90	-4,115.48	1,649.84	0.00	0.00	
9,000.00	90.00	178.16	5,868.00	-1,882.85	-4,112.27	1,749.84	0.00	0.00	
9,100.00	90.00	178.16	5,868.00	-1,982.79	-4,109.05	1,849.84	0.00	0.00	
9,200.00	90.00	178.16	5,868.00	-2,082.74	-4,105.83	1,949.84	0.00	0.00	
9,300.00	90.00	178.16	5,868.00	-2,182.69	-4,102.61	2,049.84	0.00	0.00	
9,400.00	90.00	178.16	5,868.00	-2,282.64	-4,099.39	2,149.84	0.00	0.00	
9,500.00	90.00	178.16	5,868.00	-2,382.59	-4,096.17	2,249.84	0.00	0.00	
9,600.00	90.00	178.16	5,868.00	-2,482.54	-4,092.95	2,349.84	0.00	0.00	
9,700.00	90.00	178.16	5,868.00	-2,582.48	-4,089.73	2,449.84	0.00	0.00	
9,800.00	90.00	178.16	5,868.00	-2,682.43	-4,086.51	2,549.84	0.00	0.00	
9,900.00	90.00	178.16	5,868.00	-2,782.38	-4,083.30	2,649.84	0.00	0.00	

Database: US EDM 5000 Multi Users DB
Company: Fundare Resources Company, LLC
Project: Weld County, CO (NAD 83)
Site: S29-T10N-R58W
Well: RAZOR #29H-3213
Wellbore: OH
Design: #1 (01.29.22)

Local Co-ordinate Reference: Well RAZOR #29H-3213
TVD Reference: 21' KB @ 4791.80usft
MD Reference: 21' KB @ 4791.80usft
North Reference: True
Survey Calculation Method: Minimum Curvature

Planned Survey

Measured Depth (usft)	Inclination (°)	Azimuth (°)	Vertical Depth (usft)	+N/-S (usft)	+E/-W (usft)	Vertical Section (usft)	Dogleg Rate (°/100usft)	Build Rate (°/100u)	Comments / Formations
10,000.00	90.00	178.16	5,868.00	-2,882.33	-4,080.08	2,749.84	0.00	0.00	
10,100.00	90.00	178.16	5,868.00	-2,982.28	-4,076.86	2,849.84	0.00	0.00	
10,200.00	90.00	178.16	5,868.00	-3,082.22	-4,073.64	2,949.84	0.00	0.00	
10,300.00	90.00	178.16	5,868.00	-3,182.17	-4,070.42	3,049.84	0.00	0.00	
10,400.00	90.00	178.16	5,868.00	-3,282.12	-4,067.20	3,149.84	0.00	0.00	
10,500.00	90.00	178.16	5,868.00	-3,382.07	-4,063.98	3,249.84	0.00	0.00	
10,600.00	90.00	178.16	5,868.00	-3,482.02	-4,060.76	3,349.84	0.00	0.00	
10,700.00	90.00	178.16	5,868.00	-3,581.97	-4,057.55	3,449.84	0.00	0.00	
10,800.00	90.00	178.16	5,868.00	-3,681.91	-4,054.33	3,549.84	0.00	0.00	
10,900.00	90.00	178.16	5,868.00	-3,781.86	-4,051.11	3,649.84	0.00	0.00	
11,000.00	90.00	178.16	5,868.00	-3,881.81	-4,047.89	3,749.84	0.00	0.00	
11,100.00	90.00	178.16	5,868.00	-3,981.76	-4,044.67	3,849.84	0.00	0.00	
11,200.00	90.00	178.16	5,868.00	-4,081.71	-4,041.45	3,949.84	0.00	0.00	
11,300.00	90.00	178.16	5,868.00	-4,181.65	-4,038.23	4,049.84	0.00	0.00	
11,400.00	90.00	178.16	5,868.00	-4,281.60	-4,035.01	4,149.84	0.00	0.00	
11,500.00	90.00	178.16	5,868.00	-4,381.55	-4,031.80	4,249.84	0.00	0.00	
11,600.00	90.00	178.16	5,868.00	-4,481.50	-4,028.58	4,349.84	0.00	0.00	
11,700.00	90.00	178.16	5,868.00	-4,581.45	-4,025.36	4,449.84	0.00	0.00	
11,800.00	90.00	178.16	5,868.00	-4,681.40	-4,022.14	4,549.84	0.00	0.00	
11,900.00	90.00	178.16	5,868.00	-4,781.34	-4,018.92	4,649.84	0.00	0.00	
12,000.00	90.00	178.16	5,868.00	-4,881.29	-4,015.70	4,749.84	0.00	0.00	
12,100.00	90.00	178.16	5,868.00	-4,981.24	-4,012.48	4,849.84	0.00	0.00	
12,200.00	90.00	178.16	5,868.00	-5,081.19	-4,009.26	4,949.84	0.00	0.00	
12,300.00	90.00	178.16	5,868.00	-5,181.14	-4,006.04	5,049.84	0.00	0.00	
12,400.00	90.00	178.16	5,868.00	-5,281.08	-4,002.83	5,149.84	0.00	0.00	
12,500.00	90.00	178.16	5,868.00	-5,381.03	-3,999.61	5,249.84	0.00	0.00	
12,600.00	90.00	178.16	5,868.00	-5,480.98	-3,996.39	5,349.84	0.00	0.00	
12,700.00	90.00	178.16	5,868.00	-5,580.93	-3,993.17	5,449.84	0.00	0.00	
12,800.00	90.00	178.16	5,868.00	-5,680.88	-3,989.95	5,549.84	0.00	0.00	
12,900.00	90.00	178.16	5,868.00	-5,780.83	-3,986.73	5,649.84	0.00	0.00	
13,000.00	90.00	178.16	5,868.00	-5,880.77	-3,983.51	5,749.84	0.00	0.00	
13,100.00	90.00	178.16	5,868.00	-5,980.72	-3,980.29	5,849.84	0.00	0.00	
13,200.00	90.00	178.16	5,868.00	-6,080.67	-3,977.08	5,949.84	0.00	0.00	
13,300.00	90.00	178.16	5,868.00	-6,180.62	-3,973.86	6,049.84	0.00	0.00	
13,400.00	90.00	178.16	5,868.00	-6,280.57	-3,970.64	6,149.84	0.00	0.00	
13,500.00	90.00	178.16	5,868.00	-6,380.51	-3,967.42	6,249.84	0.00	0.00	
13,600.00	90.00	178.16	5,868.00	-6,480.46	-3,964.20	6,349.84	0.00	0.00	
13,700.00	90.00	178.16	5,868.00	-6,580.41	-3,960.98	6,449.84	0.00	0.00	
13,800.00	90.00	178.16	5,868.00	-6,680.36	-3,957.76	6,549.84	0.00	0.00	
13,900.00	90.00	178.16	5,868.00	-6,780.31	-3,954.54	6,649.84	0.00	0.00	
14,000.00	90.00	178.16	5,868.00	-6,880.26	-3,951.33	6,749.84	0.00	0.00	
14,100.00	90.00	178.16	5,868.00	-6,980.20	-3,948.11	6,849.84	0.00	0.00	
14,200.00	90.00	178.16	5,868.00	-7,080.15	-3,944.89	6,949.84	0.00	0.00	
14,300.00	90.00	178.16	5,868.00	-7,180.10	-3,941.67	7,049.84	0.00	0.00	
14,400.00	90.00	178.16	5,868.00	-7,280.05	-3,938.45	7,149.84	0.00	0.00	
14,500.00	90.00	178.16	5,868.00	-7,380.00	-3,935.23	7,249.84	0.00	0.00	
14,600.00	90.00	178.16	5,868.00	-7,479.94	-3,932.01	7,349.84	0.00	0.00	
14,700.00	90.00	178.16	5,868.00	-7,579.89	-3,928.79	7,449.84	0.00	0.00	
14,800.00	90.00	178.16	5,868.00	-7,679.84	-3,925.58	7,549.84	0.00	0.00	
14,900.00	90.00	178.16	5,868.00	-7,779.79	-3,922.36	7,649.84	0.00	0.00	
15,000.00	90.00	178.16	5,868.00	-7,879.74	-3,919.14	7,749.84	0.00	0.00	
15,100.00	90.00	178.16	5,868.00	-7,979.69	-3,915.92	7,849.84	0.00	0.00	

Database:	US EDM 5000 Multi Users DB	Local Co-ordinate Reference:	Well RAZOR #29H-3213
Company:	Fundare Resources Company, LLC	TVD Reference:	21' KB @ 4791.80usft
Project:	Weld County, CO (NAD 83)	MD Reference:	21' KB @ 4791.80usft
Site:	S29-T10N-R58W	North Reference:	True
Well:	RAZOR #29H-3213	Survey Calculation Method:	Minimum Curvature
Wellbore:	OH		
Design:	#1 (01.29.22)		

Planned Survey									
Measured Depth (usft)	Inclination (°)	Azimuth (°)	Vertical Depth (usft)	+N/-S (usft)	+E/-W (usft)	Vertical Section (usft)	Dogleg Rate (°/100usft)	Build Rate (°/100u)	Comments / Formations
15,200.00	90.00	178.16	5,868.00	-8,079.63	-3,912.70	7,949.84	0.00	0.00	
15,300.00	90.00	178.16	5,868.00	-8,179.58	-3,909.48	8,049.84	0.00	0.00	
15,367.63	90.00	178.16	5,868.00	-8,247.18	-3,907.30	8,117.47	0.00	0.00	PBHL @ 15367.63' MD

Targets									
Target Name	Dip Angle (°)	Dip Dir. (°)	TVD (usft)	+N/-S (usft)	+E/-W (usft)	Northing (usft)	Easting (usft)	Latitude	Longitude
Razor 29H - 3213 FTP	0.00	0.00	6,000.00	-549.06	-4,155.22	1,541,563.56	3,443,334.19	40.808984	-103.898446
- plan misses target center by 132.00usft at 7665.52usft MD (5868.00 TVD, -549.06 N, -4155.22 E)									
- Point									
Razor 29H - 3213 PBHL	0.00	0.00	6,000.00	-8,247.18	-3,907.30	1,533,871.23	3,443,722.41	40.787855	-103.897546
- plan misses target center by 132.00usft at 15367.63usft MD (5868.00 TVD, -8247.18 N, -3907.30 E)									
- Point									

Formations						
Measured Depth (usft)	Vertical Depth (usft)	Name	Lithology	Dip (°)	Dip Direction (°)	
1,701.62	1,550.00	Upper Pierre		0.00		
4,247.30	3,500.00	Hygiene		0.00		
4,443.13	3,650.00	Lower Pierre		0.00		
7,328.00	5,794.00	P200 Marker		0.00		
7,422.19	5,829.00	P300 Marker		0.00		
7,515.32	5,853.00	P350 Marker		0.00		
7,598.50	5,865.00	Sharon Springs		0.00		
7,665.52	5,868.00	Niobrara		0.00		

Plan Annotations					
Measured Depth (usft)	Vertical Depth (usft)	Local Coordinates			
		+N/-S (usft)	+E/-W (usft)	Comment	
298.00	298.00	0.00	0.00	BUILD 3.5° DLG	
1,440.97	1,350.34	3.59	-383.05	HOLD 40° INC; 270.54° AZM	
6,750.21	5,417.23	35.57	-3,795.88	BUILD & TURN 10° DLG	
7,665.52	5,868.00	-549.06	-4,155.22	LAND 90° INC; 178.16° AZM	
15,367.63	5,868.00	-8,247.18	-3,907.30	PBHL @ 15367.63' MD	