

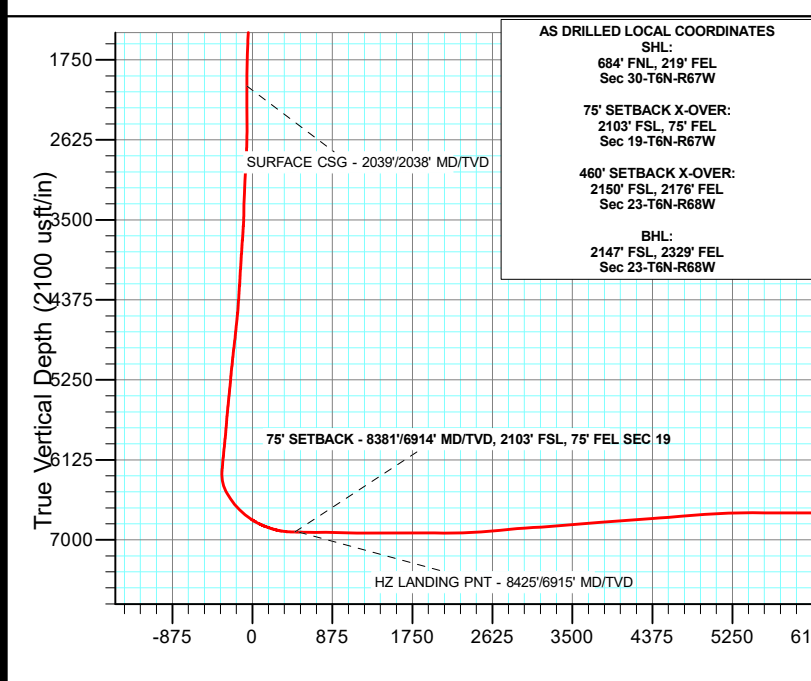
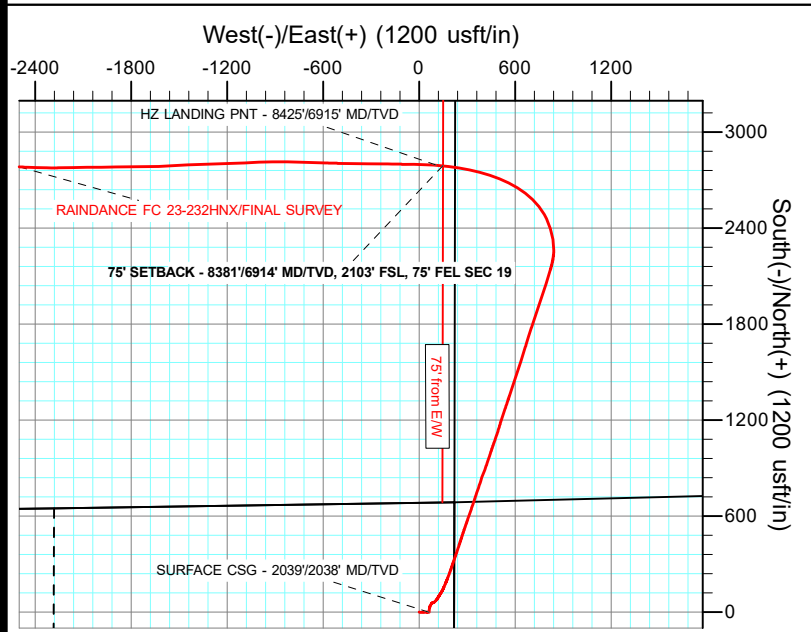
Project: WELD COUNTY  
Site: SEC 30-T6N-R67W  
Well: RAINDANCE FC 23-232HNX  
Wellbore: OWB  
Design: FINAL SURVEY  
API : 05-123-51580

PROJECT DETAILS: WELD COUNTY  
Geodetic System: US State Plane 1983  
Datum: North American Datum 1983  
Ellipsoid: GRS 1980  
Zone: Colorado Northern Zone  
System Datum: Mean Sea Level

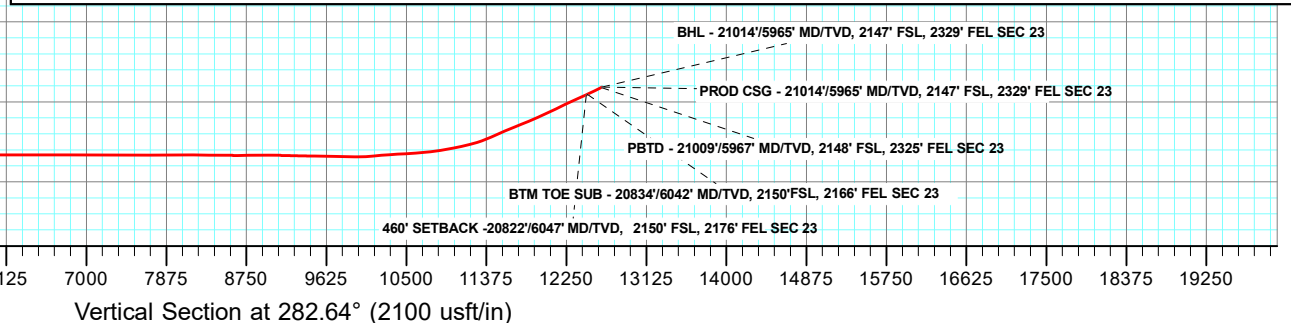
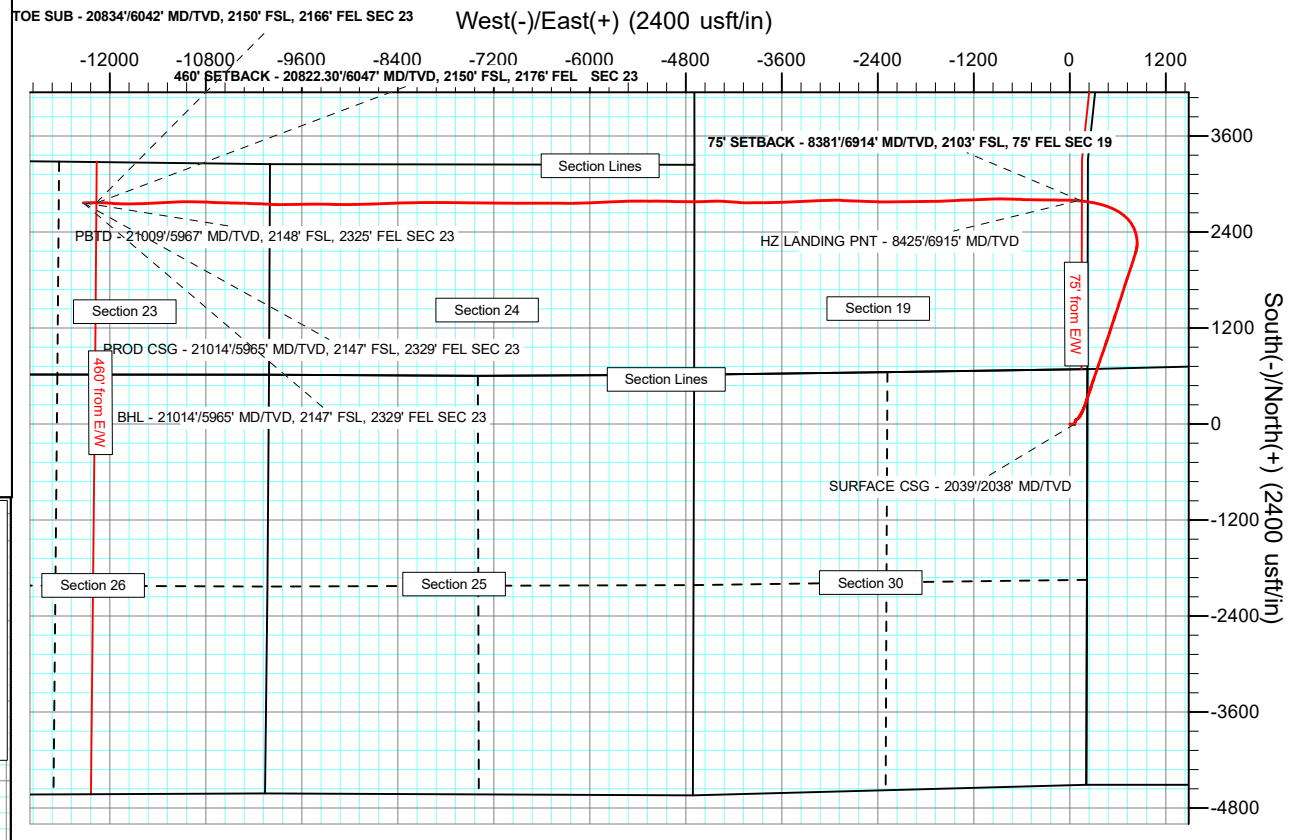


Azimuths to True North  
Magnetic North: 7.92°

Magnetic Field  
Strength: 51951.3nT  
Dip Angle: 66.67°  
Date: 8/19/2021  
Model: IGRF2020



AS DRILLED LOCAL COORDINATES  
SHL:  
684' FNL, 219' FEL  
Sec 30-T6N-R67W  
75' SETBACK X-OVER:  
2103' FSL, 75' FEL  
Sec 19-T6N-R67W  
460' SETBACK X-OVER:  
2150' FSL, 2176' FEL  
Sec 23-T6N-R68W  
BHL:  
2147' FSL, 2329' FEL  
Sec 23-T6N-R68W



## Survey Report

<b>Company:</b>	GREAT WESTERN OPERATING COMPANY	<b>Local Co-ordinate Reference:</b>	Well RAINDANCE FC 23-232HNX
<b>Project:</b>	WELD COUNTY	<b>TVD Reference:</b>	KB 20' @ 4808.00usft
<b>Site:</b>	SEC 30-T6N-R67W	<b>MD Reference:</b>	KB 20' @ 4808.00usft
<b>Well:</b>	RAINDANCE FC 23-232HNX	<b>North Reference:</b>	True
<b>Wellbore:</b>	OWB	<b>Survey Calculation Method:</b>	Minimum Curvature
<b>Design:</b>	FINAL SURVEY	<b>Database:</b>	EDM 5000.16 Single User Db

<b>Project</b>	WELD COUNTY		
<b>Map System:</b>	US State Plane 1983	<b>System Datum:</b>	Mean Sea Level
<b>Geo Datum:</b>	North American Datum 1983		
<b>Map Zone:</b>	Colorado Northern Zone		

Site		SEC 30-T6N-R67W				
Site Position:		Northing:	1,412,754.87	usft	Latitude:	40.464997°N
From:	Lat/Long	Easting:	3,159,584.52	usft	Longitude:	104.926453°W
Position Uncertainty:		0.00	usft	Slot Radius:	13.200	in

Well		RAINDANCE FC 23-232HNX				
Well Position	+N-S	0.00 usft	Northing:	1,412,066.38 usft	Ground Level:	4,788.00 usft
	+E-W	0.00 usft	Easting:	3,159,368.03 usft		
Position Uncertainty		0.00 usft	Wellhead Elevation:	usft		
Grid Convergence:		0.37 °				

<b>Wellbore</b>	OWB				
<b>Magnetics</b>	<b>Model Name</b>	<b>Sample Date</b>	<b>Declination (°)</b>	<b>Dip Angle (°)</b>	<b>Field Strength (nT)</b>
	IGRF2020	8/19/2021	7.92	66.67	51,951.30403613

<b>Design</b>	FINAL SURVEY				
<b>Audit Notes:</b>					
<b>Version:</b>	1.0	<b>Phase:</b>	ACTUAL	<b>Tie On Depth:</b>	0.00
<b>Vertical Section:</b>	<b>Depth From (TVD) (usft)</b>	<b>+N/-S (usft)</b>	<b>+E/-W (usft)</b>	<b>Direction (°)</b>	
	0.00	0.00	0.00	282.64	

<b>Survey Program</b>	<b>Date</b>	10/25/2021			
<b>From (usft)</b>	<b>To (usft)</b>	<b>Survey (Wellbore)</b>	<b>Tool Name</b>	<b>Description</b>	
100.00	21,014.00	FINAL SURVEY (OWB)	MWD	OWSG MWD - Standard	

<b>Survey</b>										
<b>Measured Depth (usft)</b>	<b>Inclination (°)</b>	<b>Azimuth (°)</b>	<b>Vertical Depth (usft)</b>	<b>+N/-S (usft)</b>	<b>+E/-W (usft)</b>	<b>Vertical Section (usft)</b>	<b>Dogleg Rate (°/100ft)</b>	<b>Build Rate (°/100ft)</b>	<b>Turn Rate (°/100ft)</b>	
0.00	0.00	0.00	0.00	0.00	0.00	0.00	0.00	0.00	0.00	
100.00	0.22	86.43	100.00	0.01	0.19	-0.18	0.22	0.22	0.00	
192.00	0.31	49.60	192.00	0.18	0.56	-0.50	0.20	0.10	-40.03	
279.00	0.31	14.88	279.00	0.56	0.80	-0.65	0.21	0.00	-39.91	
368.00	0.66	108.57	368.00	0.63	1.34	-1.17	0.84	0.39	105.27	
458.00	1.05	120.88	457.99	0.05	2.54	-2.47	0.48	0.43	13.68	
548.00	1.54	120.18	547.96	-0.99	4.30	-4.41	0.54	0.54	-0.78	
638.00	2.07	101.10	637.92	-1.91	6.94	-7.19	0.88	0.59	-21.20	
728.00	2.68	93.28	727.84	-2.34	10.63	-10.89	0.77	0.68	-8.69	
818.00	3.12	85.64	817.73	-2.27	15.18	-15.31	0.65	0.49	-8.49	

## Survey Report

<b>Company:</b>	GREAT WESTERN OPERATING COMPANY	<b>Local Co-ordinate Reference:</b>	Well RAINDANCE FC 23-232HNX
<b>Project:</b>	WELD COUNTY	<b>TVD Reference:</b>	KB 20' @ 4808.00usft
<b>Site:</b>	SEC 30-T6N-R67W	<b>MD Reference:</b>	KB 20' @ 4808.00usft
<b>Well:</b>	RAINDANCE FC 23-232HNX	<b>North Reference:</b>	True
<b>Wellbore:</b>	OWB	<b>Survey Calculation Method:</b>	Minimum Curvature
<b>Design:</b>	FINAL SURVEY	<b>Database:</b>	EDM 5000.16 Single User Db

Survey									
Measured Depth (usft)	Inclination (°)	Azimuth (°)	Vertical Depth (usft)	+N/-S (usft)	+E/-W (usft)	Vertical Section (usft)	Dogleg Rate (°/100ft)	Build Rate (°/100ft)	Turn Rate (°/100ft)
908.00	3.60	90.64	907.57	-2.12	20.44	-20.41	0.62	0.53	5.56
998.00	3.65	85.28	997.39	-1.92	26.12	-25.91	0.38	0.06	-5.96
1,088.00	3.12	88.71	1,087.23	-1.62	31.43	-31.02	0.63	-0.59	3.81
1,178.00	2.81	83.61	1,177.11	-1.32	36.07	-35.48	0.45	-0.34	-5.67
1,268.00	2.37	81.24	1,267.02	-0.79	40.10	-39.30	0.50	-0.49	-2.63
1,357.00	2.07	85.37	1,355.95	-0.38	43.52	-42.55	0.38	-0.34	4.64
1,447.00	2.29	91.61	1,445.89	-0.30	46.94	-45.87	0.36	0.24	6.93
1,537.00	2.33	104.09	1,535.82	-0.80	50.51	-49.46	0.56	0.04	13.87
1,627.00	1.93	102.69	1,625.75	-1.58	53.76	-52.81	0.45	-0.44	-1.56
1,717.00	2.07	90.47	1,715.70	-1.92	56.87	-55.91	0.50	0.16	-13.58
1,807.00	1.54	70.17	1,805.66	-1.53	59.63	-58.52	0.91	-0.59	-22.56
1,897.00	0.53	5.57	1,895.64	-0.70	60.81	-59.49	1.55	-1.12	-71.78
1,984.00	0.22	129.05	1,982.64	-0.41	60.98	-59.59	0.78	-0.36	141.93
2,039.00	0.31	115.65	2,037.64	-0.54	61.19	-59.83	0.20	0.16	-24.37
2,089.00	0.40	108.99	2,087.64	-0.65	61.48	-60.13	0.20	0.18	-13.31
2,179.00	0.40	119.45	2,177.64	-0.91	62.05	-60.75	0.08	0.00	11.62
2,269.00	5.80	5.54	2,267.49	3.46	62.76	-60.48	6.64	6.00	-126.57
2,358.00	8.26	5.45	2,355.81	14.31	63.81	-59.13	2.76	2.76	-0.10
2,448.00	8.13	9.23	2,444.89	27.02	65.44	-57.94	0.62	-0.14	4.20
2,537.00	4.88	26.19	2,533.32	36.64	68.12	-58.45	4.20	-3.65	19.06
2,627.00	5.85	28.30	2,622.92	44.11	71.99	-60.59	1.10	1.08	2.34
2,717.00	5.85	35.33	2,712.45	51.89	76.81	-63.59	0.80	0.00	7.81
2,807.00	4.44	56.43	2,802.10	57.56	82.37	-67.77	2.60	-1.57	23.44
2,896.00	3.47	94.57	2,890.90	59.25	87.92	-72.83	3.08	-1.09	42.85
2,986.00	4.57	45.88	2,980.70	61.53	93.22	-77.49	3.84	1.22	-54.10
3,076.00	4.48	46.06	3,070.42	66.46	98.32	-81.39	0.10	-0.10	0.20
3,165.00	4.40	47.99	3,159.15	71.16	103.36	-85.28	0.19	-0.09	2.17
3,214.00	4.40	44.65	3,208.01	73.76	106.08	-87.36	0.52	0.00	-6.82
3,304.00	3.87	41.93	3,297.77	78.47	110.53	-90.68	0.63	-0.59	-3.02
3,393.00	3.91	31.47	3,386.57	83.29	114.12	-93.13	0.80	0.04	-11.75
3,483.00	6.24	27.95	3,476.21	90.23	118.02	-95.41	2.61	2.59	-3.91
3,573.00	9.10	32.79	3,565.40	100.54	124.17	-99.15	3.26	3.18	5.38
3,662.00	11.96	32.52	3,652.89	114.23	132.94	-104.71	3.21	3.21	-0.30
3,751.00	15.21	28.74	3,739.39	132.25	143.51	-111.09	3.78	3.65	-4.25
3,841.00	17.89	24.00	3,825.66	155.24	154.81	-117.09	3.33	2.98	-5.27
3,931.00	20.09	21.98	3,910.75	182.20	166.22	-122.32	2.55	2.44	-2.24
4,020.00	24.26	21.27	3,993.15	213.43	178.58	-127.54	4.69	4.69	-0.80
4,110.00	25.50	20.13	4,074.80	248.85	191.96	-132.84	1.48	1.38	-1.27
4,199.00	27.87	18.20	4,154.32	286.61	205.05	-137.35	2.84	2.66	-2.17
4,289.00	30.55	19.69	4,232.86	328.13	219.33	-142.20	3.09	2.98	1.66
4,378.00	32.57	18.55	4,308.70	372.15	234.57	-147.44	2.37	2.27	-1.28
4,467.00	34.11	18.20	4,383.05	418.57	249.99	-152.32	1.74	1.73	-0.39

## Survey Report

<b>Company:</b>	GREAT WESTERN OPERATING COMPANY	<b>Local Co-ordinate Reference:</b>	Well RAINDANCE FC 23-232HNX
<b>Project:</b>	WELD COUNTY	<b>TVD Reference:</b>	KB 20' @ 4808.00usft
<b>Site:</b>	SEC 30-T6N-R67W	<b>MD Reference:</b>	KB 20' @ 4808.00usft
<b>Well:</b>	RAINDANCE FC 23-232HNX	<b>North Reference:</b>	True
<b>Wellbore:</b>	OWB	<b>Survey Calculation Method:</b>	Minimum Curvature
<b>Design:</b>	FINAL SURVEY	<b>Database:</b>	EDM 5000.16 Single User Db

Survey									
Measured Depth (usft)	Inclination (°)	Azimuth (°)	Vertical Depth (usft)	+N/-S (usft)	+E/-W (usft)	Vertical Section (usft)	Dogleg Rate (°/100ft)	Build Rate (°/100ft)	Turn Rate (°/100ft)
4,557.00	37.67	17.76	4,455.95	468.75	266.27	-157.22	3.97	3.96	-0.49
4,647.00	40.92	18.99	4,525.59	522.82	284.25	-162.93	3.71	3.61	1.37
4,736.00	44.22	19.16	4,591.13	579.71	303.93	-169.68	3.71	3.71	0.19
4,826.00	44.18	18.90	4,655.65	639.03	324.39	-176.66	0.21	-0.04	-0.29
4,916.00	43.12	18.20	4,720.77	697.92	344.15	-183.06	1.29	-1.18	-0.78
5,006.00	44.53	19.07	4,785.70	756.97	364.07	-189.57	1.70	1.57	0.97
5,095.00	44.88	19.43	4,848.96	816.08	384.71	-196.77	0.49	0.39	0.40
5,185.00	46.42	19.51	4,911.87	876.75	406.16	-204.43	1.71	1.71	0.09
5,275.00	45.01	18.72	4,974.71	937.63	427.27	-211.69	1.69	-1.57	-0.88
5,364.00	43.74	18.11	5,038.32	996.68	446.93	-217.96	1.51	-1.43	-0.69
5,454.00	46.20	19.60	5,101.99	1,056.86	467.50	-224.86	2.97	2.73	1.66
5,544.00	45.58	18.11	5,164.64	1,118.01	488.39	-231.85	1.37	-0.69	-1.66
5,634.00	44.13	16.61	5,228.44	1,178.58	507.34	-237.09	1.99	-1.61	-1.67
5,723.00	44.62	18.90	5,292.06	1,237.85	526.32	-242.64	1.88	0.55	2.57
5,813.00	43.52	18.46	5,356.72	1,297.15	546.37	-249.22	1.27	-1.22	-0.49
5,903.00	46.68	18.28	5,420.24	1,357.65	566.46	-255.58	3.51	3.51	-0.20
5,992.00	45.36	18.28	5,482.04	1,418.46	586.54	-261.87	1.48	-1.48	0.00
6,082.00	43.60	18.28	5,546.25	1,478.33	606.32	-268.07	1.96	-1.96	0.00
6,172.00	45.28	18.20	5,610.51	1,538.18	626.05	-274.21	1.87	1.87	-0.09
6,261.00	44.66	17.49	5,673.47	1,598.05	645.32	-279.92	0.90	-0.70	-0.80
6,351.00	43.82	17.49	5,737.95	1,657.93	664.19	-285.22	0.93	-0.93	0.00
6,441.00	45.01	16.79	5,802.24	1,718.12	682.75	-290.16	1.43	1.32	-0.78
6,530.00	45.67	18.99	5,864.80	1,778.36	702.20	-295.96	1.91	0.74	2.47
6,620.00	43.74	18.28	5,928.76	1,838.34	722.44	-302.57	2.22	-2.14	-0.79
6,710.00	44.48	18.81	5,993.38	1,897.73	742.36	-309.02	0.92	0.82	0.59
6,799.00	44.04	18.20	6,057.12	1,956.63	762.08	-315.36	0.69	-0.49	-0.69
6,888.00	46.64	18.28	6,119.67	2,016.75	781.89	-321.54	2.92	2.92	0.09
6,978.00	46.29	17.23	6,181.67	2,078.89	801.79	-327.35	0.93	-0.39	-1.17
7,068.00	45.58	16.70	6,244.26	2,140.74	820.66	-332.23	0.90	-0.79	-0.59
7,157.00	43.60	10.90	6,307.66	2,201.35	835.60	-333.54	5.09	-2.22	-6.52
7,247.00	45.10	359.65	6,372.12	2,263.80	841.29	-325.42	8.89	1.67	-12.50
7,337.00	49.10	351.65	6,433.43	2,329.41	836.15	-306.05	7.88	4.44	-8.89
7,427.00	49.36	342.42	6,492.27	2,395.70	820.87	-276.64	7.77	0.29	-10.26
7,516.00	47.12	335.48	6,551.58	2,457.61	797.12	-239.91	6.34	-2.52	-7.80
7,606.00	47.60	324.23	6,612.65	2,514.67	763.96	-195.06	9.20	0.53	-12.50
7,696.00	50.81	315.88	6,671.51	2,566.74	720.20	-140.96	7.87	3.57	-9.28
7,785.00	53.85	308.76	6,725.94	2,614.04	668.11	-79.79	7.19	3.42	-8.00
7,875.00	58.37	300.59	6,776.16	2,656.36	606.69	-10.60	9.05	5.02	-9.08
7,965.00	63.39	294.26	6,819.98	2,692.44	536.93	65.37	8.30	5.58	-7.03
8,055.00	70.02	289.16	6,855.57	2,722.90	460.17	146.94	9.02	7.37	-5.67
8,144.00	73.36	285.03	6,883.54	2,747.70	379.43	231.14	5.79	3.75	-4.64
8,234.00	80.79	281.34	6,903.66	2,767.65	294.09	318.78	9.17	8.26	-4.10
8,323.00	88.53	278.26	6,911.94	2,782.71	206.85	407.21	9.35	8.70	-3.46

## Survey Report

<b>Company:</b>	GREAT WESTERN OPERATING COMPANY	<b>Local Co-ordinate Reference:</b>	Well RAINDANCE FC 23-232HNX
<b>Project:</b>	WELD COUNTY	<b>TVD Reference:</b>	KB 20' @ 4808.00usft
<b>Site:</b>	SEC 30-T6N-R67W	<b>MD Reference:</b>	KB 20' @ 4808.00usft
<b>Well:</b>	RAINDANCE FC 23-232HNX	<b>North Reference:</b>	True
<b>Wellbore:</b>	OWB	<b>Survey Calculation Method:</b>	Minimum Curvature
<b>Design:</b>	FINAL SURVEY	<b>Database:</b>	EDM 5000.16 Single User Db

Survey									
Measured Depth (usft)	Inclination (°)	Azimuth (°)	Vertical Depth (usft)	+N/-S (usft)	+E/-W (usft)	Vertical Section (usft)	Dogleg Rate (°/100ft)	Build Rate (°/100ft)	Turn Rate (°/100ft)
8,381.00	88.10	275.60	6,913.65	2,789.70	149.30	464.89	4.65	-0.73	-4.59
8,381.14	88.10	275.59	6,913.65	2,789.71	149.16	465.03	4.65	-0.73	-4.59
8,413.00	87.87	274.13	6,914.77	2,792.41	117.44	496.57	4.64	-0.73	-4.59
8,425.00	88.01	273.72	6,915.20	2,793.23	105.47	508.43	3.64	1.18	-3.45
8,502.00	88.92	271.06	6,917.26	2,796.44	28.57	584.16	3.64	1.18	-3.45
8,592.00	88.40	271.23	6,919.37	2,798.24	-61.38	672.33	0.61	-0.58	0.19
8,682.00	91.08	270.97	6,919.78	2,799.96	-151.36	760.50	2.99	2.98	-0.29
8,772.00	89.71	270.71	6,919.16	2,801.28	-241.34	848.60	1.55	-1.52	-0.29
8,861.00	88.57	270.62	6,920.49	2,802.32	-330.33	935.65	1.28	-1.28	-0.10
8,951.00	88.84	270.97	6,922.53	2,803.57	-420.29	1,023.71	0.49	0.30	0.39
9,040.00	88.35	271.06	6,924.71	2,805.14	-509.25	1,110.86	0.56	-0.55	0.10
9,130.00	90.24	271.76	6,925.82	2,807.36	-599.21	1,199.12	2.24	2.10	0.78
9,220.00	89.41	271.94	6,926.09	2,810.26	-689.17	1,287.53	0.94	-0.92	0.20
9,310.00	90.64	271.85	6,926.05	2,813.24	-779.12	1,375.95	1.37	1.37	-0.10
9,399.00	90.20	270.00	6,925.40	2,814.67	-868.10	1,463.09	2.14	-0.49	-2.08
9,489.00	90.64	267.89	6,924.74	2,813.02	-958.07	1,550.52	2.39	0.49	-2.34
9,531.00	90.59	267.81	6,924.29	2,811.44	-1,000.04	1,591.12	0.22	-0.12	-0.19
9,621.00	90.02	267.28	6,923.81	2,807.59	-1,089.96	1,678.02	0.86	-0.63	-0.59
9,711.00	90.15	268.42	6,923.68	2,804.21	-1,179.89	1,765.03	1.27	0.14	1.27
9,801.00	90.07	268.07	6,923.50	2,801.45	-1,269.85	1,852.20	0.40	-0.09	-0.39
9,890.00	90.07	268.24	6,923.39	2,798.59	-1,358.80	1,938.37	0.19	0.00	0.19
9,980.00	88.62	266.93	6,924.42	2,794.80	-1,448.71	2,025.27	2.17	-1.61	-1.46
10,070.00	90.07	266.49	6,925.45	2,789.63	-1,538.56	2,111.81	1.68	1.61	-0.49
10,159.00	90.29	267.81	6,925.17	2,785.21	-1,627.44	2,197.57	1.50	0.25	1.48
10,249.00	91.39	270.62	6,923.85	2,783.97	-1,717.42	2,285.09	3.35	1.22	3.12
10,339.00	92.84	268.68	6,920.53	2,783.42	-1,807.35	2,372.72	2.69	1.61	-2.16
10,429.00	93.58	268.51	6,915.49	2,781.22	-1,897.18	2,459.89	0.84	0.82	-0.19
10,518.00	94.29	270.53	6,909.38	2,780.48	-1,985.96	2,546.36	2.40	0.80	2.27
10,608.00	94.90	269.48	6,902.17	2,780.49	-2,075.67	2,633.90	1.35	0.68	-1.17
10,698.00	95.21	268.33	6,894.24	2,778.77	-2,165.30	2,720.98	1.32	0.34	-1.28
10,788.00	95.47	268.77	6,885.87	2,776.50	-2,254.88	2,807.89	0.57	0.29	0.49
10,877.00	95.08	271.76	6,877.68	2,776.92	-2,343.49	2,894.45	3.37	-0.44	3.36
10,967.00	93.32	272.20	6,871.09	2,780.02	-2,433.19	2,982.65	2.02	-1.96	0.49
11,057.00	93.63	271.76	6,865.64	2,783.12	-2,522.97	3,070.93	0.60	0.34	-0.49
11,146.00	93.76	272.20	6,859.90	2,786.19	-2,611.74	3,158.22	0.51	0.15	0.49
11,236.00	94.24	271.85	6,853.62	2,789.36	-2,701.46	3,246.46	0.66	0.53	-0.39
11,326.00	94.77	272.73	6,846.55	2,792.95	-2,791.11	3,334.72	1.14	0.59	0.98
11,415.00	94.73	273.08	6,839.18	2,797.44	-2,879.69	3,422.14	0.39	-0.04	0.39
11,505.00	94.77	269.65	6,831.73	2,799.58	-2,969.34	3,510.08	3.80	0.04	-3.81
11,595.00	94.33	266.05	6,824.59	2,796.21	-3,058.98	3,596.81	4.02	-0.49	-4.00
11,684.00	93.76	266.05	6,818.31	2,790.10	-3,147.55	3,681.89	0.64	-0.64	0.00
11,774.00	93.63	269.12	6,812.51	2,786.31	-3,237.27	3,768.61	3.41	-0.14	3.41

## Survey Report

<b>Company:</b>	GREAT WESTERN OPERATING COMPANY	<b>Local Co-ordinate Reference:</b>	Well RAINDANCE FC 23-232HNX
<b>Project:</b>	WELD COUNTY	<b>TVD Reference:</b>	KB 20' @ 4808.00usft
<b>Site:</b>	SEC 30-T6N-R67W	<b>MD Reference:</b>	KB 20' @ 4808.00usft
<b>Well:</b>	RAINDANCE FC 23-232HNX	<b>North Reference:</b>	True
<b>Wellbore:</b>	OWB	<b>Survey Calculation Method:</b>	Minimum Curvature
<b>Design:</b>	FINAL SURVEY	<b>Database:</b>	EDM 5000.16 Single User Db

Survey										
Measured Depth (usft)	Inclination (°)	Azimuth (°)	Vertical Depth (usft)	+N/-S (usft)	+E/-W (usft)	Vertical Section (usft)	Dogleg Rate (°/100ft)	Build Rate (°/100ft)	Turn Rate (°/100ft)	
11,863.00	94.29	267.98	6,806.36	2,784.07	-3,326.03	3,854.72	1.48	0.74	-1.28	
11,953.00	94.59	267.54	6,799.39	2,780.56	-3,415.69	3,941.44	0.59	0.33	-0.49	
12,043.00	94.99	268.07	6,791.88	2,777.12	-3,505.31	4,028.14	0.74	0.44	0.59	
12,133.00	94.46	267.37	6,784.46	2,773.56	-3,594.93	4,114.81	0.97	-0.59	-0.78	
12,222.00	94.59	266.93	6,777.44	2,769.14	-3,683.54	4,200.30	0.51	0.15	-0.49	
12,312.00	93.50	271.15	6,771.09	2,767.64	-3,773.28	4,287.54	4.83	-1.21	4.69	
12,402.00	93.76	269.83	6,765.39	2,768.41	-3,863.10	4,375.35	1.49	0.29	-1.47	
12,491.00	93.54	267.89	6,759.73	2,766.64	-3,951.89	4,461.60	2.19	-0.25	-2.18	
12,581.00	95.08	270.97	6,752.96	2,765.75	-4,041.62	4,548.96	3.82	1.71	3.42	
12,671.00	94.90	274.22	6,745.13	2,769.81	-4,131.18	4,637.23	3.60	-0.20	3.61	
12,761.00	93.89	275.10	6,738.23	2,777.10	-4,220.61	4,726.10	1.49	-1.12	0.98	
12,850.00	94.68	272.73	6,731.58	2,783.16	-4,309.15	4,813.81	2.80	0.89	-2.66	
12,940.00	93.93	270.88	6,724.83	2,785.98	-4,398.85	4,901.95	2.21	-0.83	-2.06	
13,030.00	92.35	268.42	6,719.90	2,785.43	-4,488.70	4,989.51	3.25	-1.76	-2.73	
13,119.00	94.46	266.66	6,714.61	2,781.62	-4,577.45	5,075.27	3.08	2.37	-1.98	
13,209.00	93.80	270.00	6,708.13	2,779.01	-4,667.17	5,162.24	3.77	-0.73	3.71	
13,299.00	90.24	271.50	6,704.95	2,780.19	-4,757.09	5,250.24	4.29	-3.96	1.67	
13,388.00	89.89	270.62	6,704.85	2,781.83	-4,846.07	5,337.43	1.06	-0.39	-0.99	
13,478.00	90.11	270.79	6,704.85	2,782.94	-4,936.06	5,425.48	0.31	0.24	0.19	
13,568.00	90.11	270.79	6,704.68	2,784.18	-5,026.05	5,513.56	0.00	0.00	0.00	
13,657.00	90.11	270.88	6,704.51	2,785.48	-5,115.05	5,600.68	0.10	0.00	0.10	
13,747.00	88.92	269.39	6,705.27	2,785.69	-5,205.04	5,688.53	2.12	-1.32	-1.66	
13,837.00	90.20	270.88	6,705.96	2,785.90	-5,295.03	5,776.39	2.18	1.42	1.66	
13,926.00	90.07	270.44	6,705.75	2,786.93	-5,384.02	5,863.45	0.52	-0.15	-0.49	
14,016.00	90.11	270.88	6,705.61	2,787.96	-5,474.02	5,951.49	0.49	0.04	0.49	
14,106.00	89.93	268.95	6,705.58	2,787.83	-5,564.01	6,039.27	2.15	-0.20	-2.14	
14,196.00	90.02	264.38	6,705.62	2,782.60	-5,653.84	6,125.77	5.08	0.10	-5.08	
14,285.00	90.07	267.37	6,705.55	2,776.20	-5,742.60	6,210.98	3.36	0.06	3.36	
14,375.00	89.98	267.10	6,705.51	2,771.85	-5,832.49	6,297.75	0.32	-0.10	-0.30	
14,465.00	89.63	267.19	6,705.82	2,767.37	-5,922.38	6,384.47	0.40	-0.39	0.10	
14,555.00	90.02	268.24	6,706.09	2,763.78	-6,012.31	6,471.43	1.24	0.43	1.17	
14,645.00	90.07	267.63	6,706.02	2,760.54	-6,102.25	6,558.49	0.68	0.06	-0.68	
14,734.00	90.07	270.53	6,705.91	2,759.11	-6,191.23	6,644.99	3.26	0.00	3.26	
14,824.00	89.98	270.00	6,705.87	2,759.53	-6,281.22	6,732.90	0.60	-0.10	-0.59	
14,914.00	89.98	270.27	6,705.90	2,759.74	-6,371.22	6,820.77	0.30	0.00	0.30	
15,004.00	90.02	270.27	6,705.90	2,760.16	-6,461.22	6,908.68	0.04	0.04	0.00	
15,093.00	90.07	270.27	6,705.83	2,760.58	-6,550.22	6,995.61	0.06	0.06	0.00	
15,183.00	88.92	269.30	6,706.63	2,760.25	-6,640.22	7,083.35	1.67	-1.28	-1.08	
15,273.00	90.15	270.35	6,707.36	2,759.97	-6,730.21	7,171.10	1.80	1.37	1.17	
15,362.00	90.15	270.35	6,707.13	2,760.51	-6,819.21	7,258.06	0.00	0.00	0.00	
15,452.00	89.89	269.91	6,707.09	2,760.72	-6,909.21	7,345.92	0.57	-0.29	-0.49	
15,541.00	90.15	270.44	6,707.06	2,760.99	-6,998.21	7,432.82	0.66	0.29	0.60	
15,631.00	89.80	270.09	6,707.10	2,761.41	-7,088.20	7,520.73	0.55	-0.39	-0.39	

## Survey Report

<b>Company:</b>	GREAT WESTERN OPERATING COMPANY	<b>Local Co-ordinate Reference:</b>	Well RAINDANCE FC 23-232HNX
<b>Project:</b>	WELD COUNTY	<b>TVD Reference:</b>	KB 20' @ 4808.00usft
<b>Site:</b>	SEC 30-T6N-R67W	<b>MD Reference:</b>	KB 20' @ 4808.00usft
<b>Well:</b>	RAINDANCE FC 23-232HNX	<b>North Reference:</b>	True
<b>Wellbore:</b>	OWB	<b>Survey Calculation Method:</b>	Minimum Curvature
<b>Design:</b>	FINAL SURVEY	<b>Database:</b>	EDM 5000.16 Single User Db

Survey										
Measured Depth (usft)	Inclination (°)	Azimuth (°)	Vertical Depth (usft)	+N/-S (usft)	+E/-W (usft)	Vertical Section (usft)	Dogleg Rate (°/100ft)	Build Rate (°/100ft)	Turn Rate (°/100ft)	
15,721.00	89.93	270.35	6,707.31	2,761.75	-7,178.20	7,608.62	0.32	0.14	0.29	
15,811.00	90.11	270.62	6,707.28	2,762.51	-7,268.20	7,696.60	0.36	0.20	0.30	
15,900.00	90.20	270.88	6,707.04	2,763.68	-7,357.19	7,783.69	0.31	0.10	0.29	
15,990.00	90.15	270.71	6,706.77	2,764.93	-7,447.18	7,871.77	0.20	-0.06	-0.19	
16,080.00	90.15	271.06	6,706.53	2,766.32	-7,537.17	7,959.88	0.39	0.00	0.39	
16,169.00	90.15	270.88	6,706.30	2,767.82	-7,626.16	8,047.04	0.20	0.00	-0.20	
16,259.00	90.20	270.79	6,706.02	2,769.14	-7,716.15	8,135.14	0.11	0.06	-0.10	
16,349.00	89.28	270.00	6,706.43	2,769.76	-7,806.14	8,223.09	1.35	-1.02	-0.88	
16,438.00	89.28	269.91	6,707.55	2,769.69	-7,895.14	8,309.91	0.10	0.00	-0.10	
16,528.00	89.28	270.18	6,708.68	2,769.76	-7,985.13	8,397.73	0.30	0.00	0.30	
16,618.00	89.28	269.83	6,709.81	2,769.76	-8,075.12	8,485.55	0.39	0.00	-0.39	
16,707.00	89.93	269.65	6,710.43	2,769.36	-8,164.12	8,572.30	0.76	0.73	-0.20	
16,797.00	89.45	268.42	6,710.91	2,767.85	-8,254.10	8,659.77	1.47	-0.53	-1.37	
16,887.00	90.81	267.45	6,710.71	2,764.60	-8,344.04	8,746.82	1.86	1.51	-1.08	
16,976.00	91.08	266.49	6,709.24	2,759.90	-8,432.90	8,832.49	1.12	0.30	-1.08	
17,066.00	90.11	268.33	6,708.31	2,755.83	-8,522.80	8,919.32	2.31	-1.08	2.04	
17,156.00	89.36	269.30	6,708.72	2,753.97	-8,612.78	9,006.71	1.36	-0.83	1.08	
17,245.00	89.06	268.24	6,709.95	2,752.06	-8,701.75	9,093.11	1.24	-0.34	-1.19	
17,335.00	88.88	267.45	6,711.57	2,748.68	-8,791.67	9,180.11	0.90	-0.20	-0.88	
17,425.00	88.53	269.83	6,713.60	2,746.54	-8,881.62	9,267.40	2.67	-0.39	2.64	
17,514.00	88.75	270.62	6,715.71	2,746.89	-8,970.59	9,354.30	0.92	0.25	0.89	
17,604.00	89.01	268.60	6,717.47	2,746.28	-9,060.56	9,441.96	2.26	0.29	-2.24	
17,694.00	89.19	270.35	6,718.89	2,745.45	-9,150.55	9,529.58	1.95	0.20	1.94	
17,784.00	89.32	271.23	6,720.06	2,746.69	-9,240.53	9,617.65	0.99	0.14	0.98	
17,873.00	88.92	270.71	6,721.42	2,748.20	-9,329.51	9,704.80	0.74	-0.45	-0.58	
17,963.00	88.84	269.83	6,723.18	2,748.63	-9,419.49	9,792.69	0.98	-0.09	-0.98	
18,052.00	88.84	270.00	6,724.99	2,748.49	-9,508.47	9,879.49	0.19	0.00	0.19	
18,142.00	89.67	269.83	6,726.16	2,748.36	-9,598.46	9,967.27	0.94	0.92	-0.19	
18,232.00	93.10	268.42	6,723.98	2,746.99	-9,688.41	10,054.73	4.12	3.81	-1.57	
18,322.00	94.73	268.42	6,717.84	2,744.51	-9,778.16	10,141.77	1.81	1.81	0.00	
18,411.00	95.03	270.27	6,710.26	2,743.50	-9,866.83	10,228.06	2.10	0.34	2.08	
18,501.00	93.93	272.46	6,703.23	2,745.64	-9,956.52	10,316.05	2.72	-1.22	2.43	
18,590.00	93.67	273.17	6,697.33	2,750.00	-10,045.22	10,403.55	0.85	-0.29	0.80	
18,680.00	93.32	271.94	6,691.85	2,754.00	-10,134.96	10,491.99	1.42	-0.39	-1.37	
18,770.00	93.14	271.58	6,686.78	2,756.76	-10,224.77	10,580.23	0.45	-0.20	-0.40	
18,859.00	94.20	271.67	6,681.08	2,759.28	-10,313.55	10,667.41	1.20	1.19	0.10	
18,949.00	97.01	271.41	6,672.29	2,761.69	-10,403.08	10,755.30	3.14	3.12	-0.29	
19,039.00	98.90	271.41	6,659.84	2,763.88	-10,492.18	10,842.72	2.10	2.10	0.00	
19,128.00	99.65	271.85	6,645.49	2,766.38	-10,579.98	10,928.94	0.97	0.84	0.49	
19,218.00	100.66	272.20	6,629.62	2,769.51	-10,668.52	11,016.01	1.19	1.12	0.39	
19,308.00	101.85	272.20	6,612.06	2,772.90	-10,756.72	11,102.82	1.32	1.32	0.00	
19,398.00	103.91	271.76	6,592.00	2,775.93	-10,844.40	11,189.03	2.34	2.29	-0.49	
19,487.00	107.17	271.67	6,568.16	2,778.50	-10,930.09	11,273.21	3.66	3.66	-0.10	
19,577.00	110.33	270.18	6,539.23	2,779.88	-11,015.29	11,356.65	3.85	3.51	-1.66	

## Survey Report

<b>Company:</b>	GREAT WESTERN OPERATING COMPANY	<b>Local Co-ordinate Reference:</b>	Well RAINDANCE FC 23-232HNX
<b>Project:</b>	WELD COUNTY	<b>TVD Reference:</b>	KB 20' @ 4808.00usft
<b>Site:</b>	SEC 30-T6N-R67W	<b>MD Reference:</b>	KB 20' @ 4808.00usft
<b>Well:</b>	RAINDANCE FC 23-232HNX	<b>North Reference:</b>	True
<b>Wellbore:</b>	OWB	<b>Survey Calculation Method:</b>	Minimum Curvature
<b>Design:</b>	FINAL SURVEY	<b>Database:</b>	EDM 5000.16 Single User Db

Survey										
Measured Depth (usft)	Inclination (°)	Azimuth (°)	Vertical Depth (usft)	+N/-S (usft)	+E/-W (usft)	Vertical Section (usft)	Dogleg Rate (°/100ft)	Build Rate (°/100ft)	Turn Rate (°/100ft)	
19,667.00	112.92	268.60	6,506.06	2,779.00	-11,098.94	11,438.08	3.31	2.88	-1.76	
19,756.00	113.76	267.28	6,470.80	2,776.07	-11,180.61	11,517.12	1.66	0.94	-1.48	
19,846.00	111.25	266.31	6,436.35	2,771.41	-11,263.61	11,597.09	2.96	-2.79	-1.08	
19,936.00	111.56	266.75	6,403.51	2,766.34	-11,347.25	11,677.59	0.57	0.34	0.49	
20,026.00	112.00	268.16	6,370.11	2,762.63	-11,430.74	11,758.25	1.53	0.49	1.57	
20,115.00	111.82	266.14	6,336.90	2,758.52	-11,513.21	11,837.81	2.12	-0.20	-2.27	
20,205.00	113.14	267.72	6,302.49	2,754.06	-11,596.24	11,917.86	2.19	1.47	1.76	
20,295.00	113.76	271.23	6,266.66	2,753.30	-11,678.79	11,998.24	3.64	0.69	3.90	
20,384.00	115.21	269.48	6,229.77	2,753.81	-11,759.78	12,077.37	2.42	1.63	-1.97	
20,474.00	115.17	270.35	6,191.47	2,753.69	-11,841.22	12,156.81	0.88	-0.04	0.97	
20,564.00	115.17	273.25	6,153.18	2,756.25	-11,922.62	12,236.80	2.92	0.00	3.22	
20,653.00	114.68	274.31	6,115.67	2,761.57	-12,003.15	12,316.55	1.21	-0.55	1.19	
20,743.00	113.71	272.73	6,078.79	2,766.61	-12,085.09	12,397.60	1.93	-1.08	-1.76	
20,822.30	113.68	270.30	6,046.92	2,768.52	-12,157.67	12,468.84	2.81	-0.04	-3.07	
20,832.00	113.67	270.00	6,043.02	2,768.55	-12,166.55	12,477.51	2.81	-0.07	-3.07	
20,833.02	113.69	269.98	6,042.61	2,768.55	-12,167.49	12,478.43	2.35	1.86	-1.57	
20,834.00	113.71	269.97	6,042.22	2,768.55	-12,168.38	12,479.30	2.30	1.82	-1.54	
20,922.00	115.30	268.60	6,005.72	2,767.55	-12,248.45	12,557.21	2.30	1.81	-1.56	
20,986.00	116.88	268.95	5,977.57	2,766.32	-12,305.91	12,613.01	2.52	2.47	0.55	
21,009.00	116.88	268.95	5,967.18	2,765.95	-12,326.42	12,632.94	0.00	0.00	0.00	
21,014.00	116.88	268.95	5,964.92	2,765.86	-12,330.88	12,637.27	0.00	0.00	0.00	