

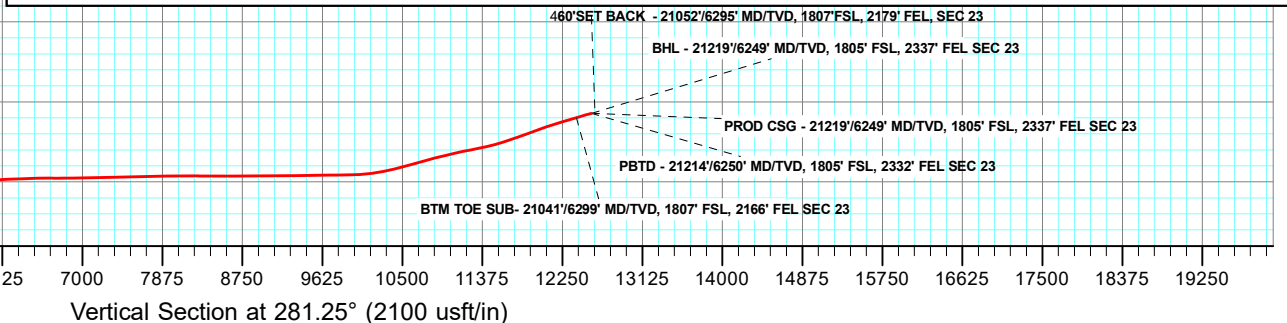
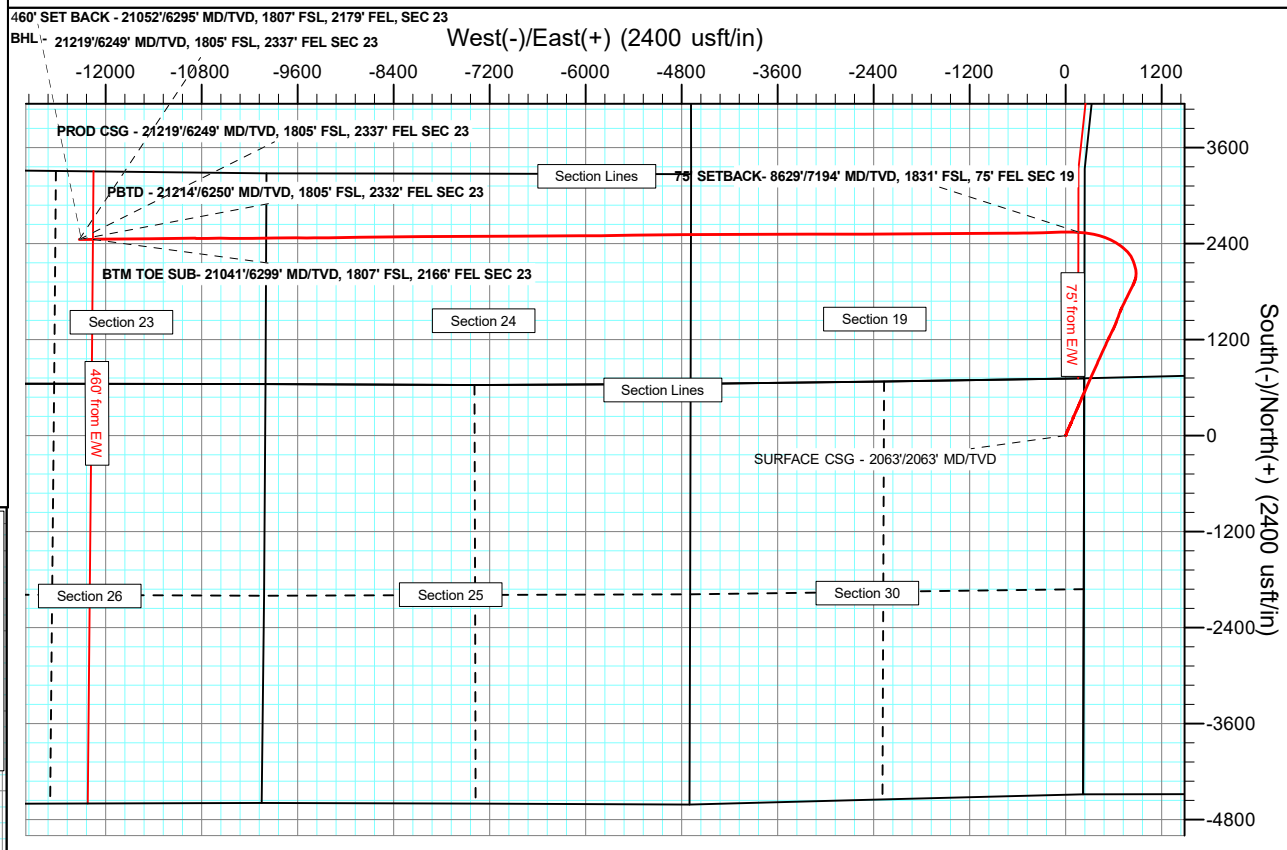
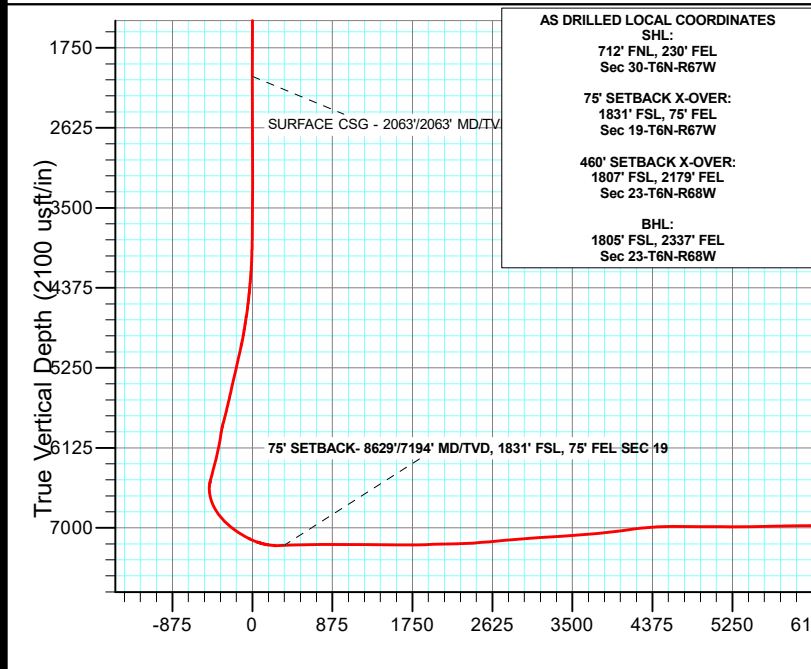
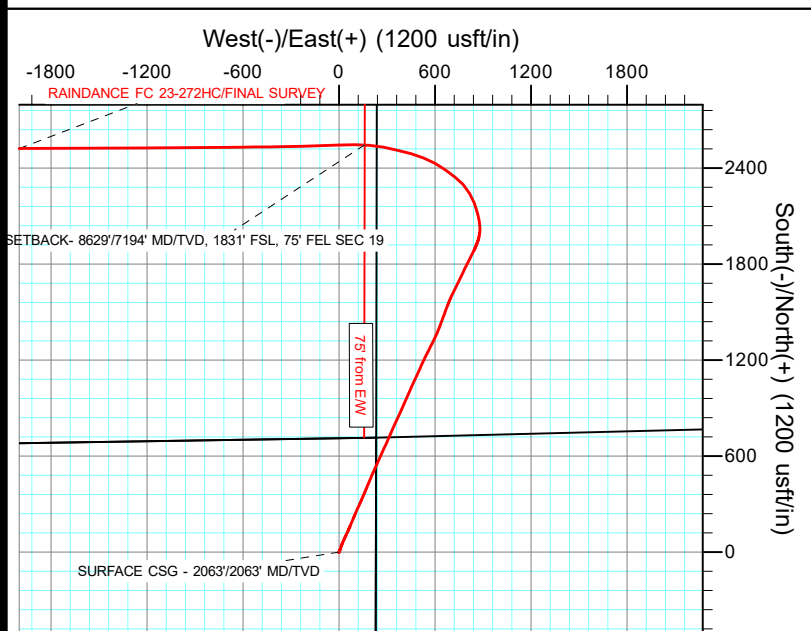
Project: WELD COUNTY  
Site: SEC 30-T6N-R67W  
Well: RAINDANCE FC 23-272HC  
Wellbore: OWB  
Design: FINAL SURVEY  
API: 05-123-51583

PROJECT DETAILS: WELD COUNTY  
Geodetic System: US State Plane 1983  
Datum: North American Datum 1983  
Ellipsoid: GRS 1980  
Zone: Colorado Northern Zone  
System Datum: Mean Sea Level



Azimuths to True North  
Magnetic North: 7.92°

Magnetic Field  
Strength: 51951.3nT  
Dip Angle: 66.67°  
Date: 8/19/2021  
Model: IGRF2020



## Survey Report

<b>Company:</b>	GREAT WESTERN OPERATING COMPANY	<b>Local Co-ordinate Reference:</b>	Well RAINDANCE FC 23-272HC
<b>Project:</b>	WELD COUNTY	<b>TVD Reference:</b>	KB 20' @ 4808.00usft
<b>Site:</b>	SEC 30-T6N-R67W	<b>MD Reference:</b>	KB 20' @ 4808.00usft
<b>Well:</b>	RAINDANCE FC 23-272HC	<b>North Reference:</b>	True
<b>Wellbore:</b>	OWB	<b>Survey Calculation Method:</b>	Minimum Curvature
<b>Design:</b>	FINAL SURVEY	<b>Database:</b>	EDM 5000.16 Single User Db

<b>Project</b>	WELD COUNTY		
<b>Map System:</b>	US State Plane 1983	<b>System Datum:</b>	Mean Sea Level
<b>Geo Datum:</b>	North American Datum 1983		
<b>Map Zone:</b>	Colorado Northern Zone		

<b>Site</b>	SEC 30-T6N-R67W		
<b>Site Position:</b>		<b>Northing:</b>	1,412,754.87 usft
<b>From:</b>	Lat/Long	<b>Easting:</b>	3,159,584.52 usft
<b>Position Uncertainty:</b>	0.00 usft	<b>Slot Radius:</b>	13.200 in

<b>Well</b>	RAINDANCE FC 23-272HC		
<b>Well Position</b>	<b>+N/-S</b>	0.00 usft	<b>Northing:</b> 1,412,037.89 usft
	<b>+E/-W</b>	0.00 usft	<b>Easting:</b> 3,159,357.37 usft
<b>Position Uncertainty</b>	0.00 usft	<b>Wellhead Elevation:</b>	usft
<b>Grid Convergence:</b>	0.37 °		

<b>Wellbore</b>	OWB				
<b>Magnetics</b>	<b>Model Name</b>	<b>Sample Date</b>	<b>Declination (°)</b>	<b>Dip Angle (°)</b>	<b>Field Strength (nT)</b>
	IGRF2020	8/19/2021	7.92	66.67	51,951.25928115

<b>Design</b>	FINAL SURVEY				
<b>Audit Notes:</b>					
<b>Version:</b>	1.0	<b>Phase:</b>	ACTUAL	<b>Tie On Depth:</b>	0.00
<b>Vertical Section:</b>	<b>Depth From (TVD) (usft)</b>	<b>+N/-S (usft)</b>	<b>+E/-W (usft)</b>	<b>Direction (°)</b>	
	0.00	0.00	0.00	281.25	

<b>Survey Program</b>	<b>Date</b>	9/28/2021			
<b>From (usft)</b>	<b>To (usft)</b>	<b>Survey (Wellbore)</b>	<b>Tool Name</b>	<b>Description</b>	
15.00	21,219.00	FINAL SURVEY (OWB)	MWD	OWSG MWD - Standard	

<b>Survey</b>										
<b>Measured Depth (usft)</b>	<b>Inclination (°)</b>	<b>Azimuth (°)</b>	<b>Vertical Depth (usft)</b>	<b>+N/-S (usft)</b>	<b>+E/-W (usft)</b>	<b>Vertical Section (usft)</b>	<b>Dogleg Rate (°/100ft)</b>	<b>Build Rate (°/100ft)</b>	<b>Turn Rate (°/100ft)</b>	
0.00	0.00	0.00	0.00	0.00	0.00	0.00	0.00	0.00	0.00	
15.00	0.00	0.00	15.00	0.00	0.00	0.00	0.00	0.00	0.00	
100.00	0.44	119.47	100.00	-0.16	0.28	-0.31	0.52	0.52	0.00	
192.00	0.18	63.93	192.00	-0.27	0.72	-0.76	0.40	-0.28	-60.37	
279.00	0.18	13.30	279.00	-0.08	0.88	-0.87	0.18	0.00	-58.20	
368.00	0.35	334.37	368.00	0.30	0.79	-0.72	0.27	0.19	-43.74	
458.00	0.53	353.61	457.99	0.96	0.63	-0.42	0.26	0.20	21.38	
548.00	1.14	240.06	547.99	0.93	-0.20	0.38	1.60	0.68	-126.17	
638.00	1.27	232.32	637.97	-0.12	-1.76	1.70	0.23	0.14	-8.60	
728.00	0.92	201.30	727.95	-1.41	-2.81	2.49	0.75	-0.39	-34.47	

# Survey Report

<b>Company:</b>	GREAT WESTERN OPERATING COMPANY	<b>Local Co-ordinate Reference:</b>	Well RAINDANCE FC 23-272HC
<b>Project:</b>	WELD COUNTY	<b>TVD Reference:</b>	KB 20' @ 4808.00usft
<b>Site:</b>	SEC 30-T6N-R67W	<b>MD Reference:</b>	KB 20' @ 4808.00usft
<b>Well:</b>	RAINDANCE FC 23-272HC	<b>North Reference:</b>	True
<b>Wellbore:</b>	OWB	<b>Survey Calculation Method:</b>	Minimum Curvature
<b>Design:</b>	FINAL SURVEY	<b>Database:</b>	EDM 5000.16 Single User Db

Survey									
Measured Depth (usft)	Inclination (°)	Azimuth (°)	Vertical Depth (usft)	+N/-S (usft)	+E/-W (usft)	Vertical Section (usft)	Dogleg Rate (°/100ft)	Build Rate (°/100ft)	Turn Rate (°/100ft)
818.00	0.97	127.82	817.94	-2.55	-2.47	1.93	1.26	0.06	-81.64
908.00	0.70	59.53	907.94	-2.74	-1.40	0.84	1.07	-0.30	-75.88
998.00	1.01	32.73	997.93	-1.79	-0.50	0.14	0.55	0.34	-29.78
1,088.00	0.22	277.94	1,087.92	-1.10	-0.24	0.02	1.24	-0.88	-127.54
1,178.00	0.48	239.80	1,177.92	-1.26	-0.74	0.47	0.37	0.29	-42.38
1,268.00	0.22	355.55	1,267.92	-1.28	-1.07	0.80	0.68	-0.29	128.61
1,357.00	0.57	51.18	1,356.92	-0.83	-0.74	0.57	0.54	0.39	62.51
1,447.00	0.44	75.88	1,446.91	-0.47	-0.06	-0.03	0.28	-0.14	27.44
1,537.00	0.26	55.31	1,536.91	-0.27	0.44	-0.49	0.24	-0.20	-22.86
1,627.00	0.13	97.94	1,626.91	-0.17	0.71	-0.73	0.21	-0.14	47.37
1,717.00	0.13	335.16	1,716.91	-0.09	0.77	-0.77	0.25	0.00	-136.42
1,807.00	0.26	97.94	1,806.91	-0.02	0.93	-0.92	0.39	0.14	136.42
1,897.00	0.26	239.80	1,896.91	-0.15	0.96	-0.97	0.55	0.00	157.62
1,987.00	0.35	251.48	1,986.91	-0.34	0.52	-0.58	0.12	0.10	12.98
2,008.00	0.09	316.88	2,007.91	-0.35	0.45	-0.51	1.54	-1.24	311.43
2,063.00	0.08	314.87	2,062.91	-0.29	0.39	-0.44	0.02	-0.01	-3.65
2,143.00	0.07	311.11	2,142.91	-0.22	0.31	-0.35	0.02	-0.01	-4.70
2,232.00	0.05	338.80	2,231.91	-0.15	0.26	-0.28	0.04	-0.02	31.11
2,322.00	0.07	5.28	2,321.91	-0.06	0.25	-0.25	0.04	0.02	29.42
2,411.00	0.03	334.31	2,410.91	0.02	0.24	-0.24	0.05	-0.04	-34.80
2,501.00	0.05	219.82	2,500.91	0.01	0.21	-0.20	0.08	0.02	-127.21
2,591.00	0.01	278.73	2,590.91	-0.02	0.17	-0.18	0.05	-0.04	65.46
2,681.00	0.04	231.10	2,680.91	-0.04	0.14	-0.15	0.04	0.03	-52.92
2,770.00	0.09	291.79	2,769.91	-0.03	0.05	-0.06	0.09	0.06	68.19
2,860.00	0.07	256.88	2,859.91	-0.02	-0.07	0.06	0.06	-0.02	-38.79
2,950.00	0.03	332.06	2,949.91	-0.01	-0.13	0.13	0.08	-0.04	83.53
3,039.00	0.04	332.47	3,038.91	0.04	-0.16	0.16	0.01	0.01	0.46
3,129.00	0.08	189.53	3,128.91	0.00	-0.18	0.18	0.13	0.04	-158.82
3,219.00	0.07	218.89	3,218.91	-0.10	-0.23	0.20	0.04	-0.01	32.62
3,308.00	0.06	209.50	3,307.91	-0.18	-0.28	0.24	0.02	-0.01	-10.55
3,398.00	0.07	262.95	3,397.91	-0.23	-0.36	0.31	0.07	0.01	59.39
3,488.00	0.05	354.48	3,487.91	-0.20	-0.42	0.37	0.10	-0.02	101.70
3,577.00	0.04	189.96	3,576.91	-0.19	-0.43	0.38	0.10	-0.01	-184.85
3,667.00	0.98	21.95	3,666.90	0.49	-0.15	0.24	1.13	1.04	-186.68
3,756.00	4.06	26.07	3,755.81	4.03	1.52	-0.71	3.46	3.46	4.63
3,846.00	7.07	21.22	3,845.37	12.05	4.93	-2.48	3.38	3.34	-5.39
3,935.00	9.25	18.00	3,933.47	23.97	9.12	-4.27	2.50	2.45	-3.62
4,025.00	11.49	18.75	4,021.99	39.33	14.24	-6.29	2.49	2.49	0.83
4,114.00	14.65	23.90	4,108.68	58.02	21.65	-9.92	3.78	3.55	5.79
4,204.00	16.32	24.50	4,195.41	79.94	31.51	-15.31	1.86	1.86	0.67
4,293.00	19.66	25.16	4,280.04	104.87	43.06	-21.77	3.76	3.75	0.74
4,383.00	21.85	24.20	4,364.20	133.86	56.36	-29.17	2.46	2.43	-1.07

## Survey Report

<b>Company:</b>	GREAT WESTERN OPERATING COMPANY	<b>Local Co-ordinate Reference:</b>	Well RAINDANCE FC 23-272HC
<b>Project:</b>	WELD COUNTY	<b>TVD Reference:</b>	KB 20' @ 4808.00usft
<b>Site:</b>	SEC 30-T6N-R67W	<b>MD Reference:</b>	KB 20' @ 4808.00usft
<b>Well:</b>	RAINDANCE FC 23-272HC	<b>North Reference:</b>	True
<b>Wellbore:</b>	OWB	<b>Survey Calculation Method:</b>	Minimum Curvature
<b>Design:</b>	FINAL SURVEY	<b>Database:</b>	EDM 5000.16 Single User Db

Survey										
Measured Depth (usft)	Inclination (°)	Azimuth (°)	Vertical Depth (usft)	+N/-S (usft)	+E/-W (usft)	Vertical Section (usft)	Dogleg Rate (°/100ft)	Build Rate (°/100ft)	Turn Rate (°/100ft)	
4,472.00	26.94	22.64	4,445.23	167.59	70.92	-36.87	5.76	5.72	-1.75	
4,562.00	29.75	22.68	4,524.43	207.02	87.39	-45.32	3.12	3.12	0.04	
4,652.00	32.77	23.49	4,601.35	249.97	105.71	-54.91	3.39	3.36	0.90	
4,741.00	32.86	24.48	4,676.15	294.04	125.31	-65.54	0.61	0.10	1.11	
4,831.00	35.52	23.49	4,750.59	340.25	145.86	-76.67	3.02	2.96	-1.10	
4,921.00	38.88	22.87	4,822.27	390.26	167.26	-87.91	3.76	3.73	-0.69	
5,011.00	41.73	22.35	4,890.90	444.00	189.63	-99.37	3.19	3.17	-0.58	
5,100.00	42.27	24.36	4,957.04	498.67	213.24	-111.86	1.63	0.61	2.26	
5,190.00	44.82	24.60	5,022.27	555.09	238.94	-126.05	2.84	2.83	0.27	
5,280.00	44.85	24.06	5,086.09	612.91	265.08	-140.41	0.42	0.03	-0.60	
5,369.00	45.11	24.24	5,149.05	670.32	290.82	-154.46	0.33	0.29	0.20	
5,459.00	45.38	24.17	5,212.41	728.61	317.02	-168.79	0.31	0.30	-0.08	
5,549.00	45.42	24.15	5,275.61	787.08	343.25	-183.10	0.05	0.04	-0.02	
5,639.00	45.52	24.32	5,338.72	845.58	369.59	-197.52	0.17	0.11	0.19	
5,728.00	45.31	23.70	5,401.20	903.48	395.38	-211.52	0.55	-0.24	-0.70	
5,818.00	45.37	24.07	5,464.46	962.02	421.30	-225.52	0.30	0.07	0.41	
5,908.00	45.44	24.48	5,527.65	1,020.44	447.65	-239.97	0.33	0.08	0.46	
5,997.00	45.31	24.42	5,590.17	1,078.10	473.86	-254.43	0.15	-0.15	-0.07	
6,087.00	45.48	24.51	5,653.37	1,136.42	500.40	-269.08	0.20	0.19	0.10	
6,177.00	45.06	24.64	5,716.71	1,194.57	526.99	-283.81	0.48	-0.47	0.14	
6,267.00	44.98	27.33	5,780.33	1,251.79	554.88	-300.00	2.12	-0.09	2.99	
6,356.00	44.90	26.81	5,843.33	1,307.77	583.49	-317.14	0.42	-0.09	-0.58	
6,446.00	45.00	23.52	5,907.03	1,365.30	610.52	-332.43	2.58	0.11	-3.66	
6,535.00	44.89	20.28	5,970.03	1,423.62	633.96	-344.04	2.57	-0.12	-3.64	
6,625.00	45.04	20.59	6,033.71	1,483.22	656.17	-354.20	0.30	0.17	0.34	
6,715.00	44.90	20.46	6,097.38	1,542.79	678.47	-364.45	0.19	-0.16	-0.14	
6,805.00	44.95	25.86	6,161.13	1,601.18	703.45	-377.56	4.24	0.06	6.00	
6,894.00	44.74	25.65	6,224.23	1,657.70	730.72	-393.27	0.29	-0.24	-0.24	
6,984.00	44.75	26.18	6,288.16	1,714.69	758.41	-409.31	0.41	0.01	0.59	
7,074.00	45.07	25.92	6,351.90	1,771.77	786.31	-425.54	0.41	0.36	-0.29	
7,163.00	44.86	26.23	6,414.87	1,828.27	813.96	-441.64	0.34	-0.24	0.35	
7,253.00	45.06	26.76	6,478.55	1,885.18	842.33	-458.36	0.47	0.22	0.59	
7,264.00	44.99	25.76	6,486.33	1,892.16	845.77	-460.37	6.45	-0.63	-9.07	
7,343.00	44.75	18.55	6,542.35	1,943.71	866.77	-470.91	6.45	-0.30	-9.13	
7,433.00	42.44	4.30	6,607.69	2,004.18	879.16	-471.26	11.20	-2.57	-15.83	
7,522.00	41.96	351.18	6,673.75	2,063.64	876.84	-457.39	9.90	-0.54	-14.74	
7,611.00	43.39	345.07	6,739.21	2,122.61	864.40	-433.68	4.92	1.61	-6.87	
7,701.00	45.31	337.81	6,803.60	2,182.15	844.34	-402.39	6.03	2.13	-8.07	
7,791.00	50.12	330.60	6,864.18	2,241.93	815.26	-362.21	7.97	5.34	-8.01	
7,880.00	50.68	317.66	6,921.06	2,297.27	775.21	-312.14	11.21	0.63	-14.54	
7,970.00	53.59	307.35	6,976.39	2,345.06	722.88	-251.48	9.60	3.23	-11.46	
8,060.00	56.76	305.15	7,027.78	2,388.72	663.29	-184.53	4.05	3.52	-2.44	
8,150.00	59.18	299.41	7,075.54	2,429.39	598.81	-113.34	6.04	2.69	-6.38	

## Survey Report

<b>Company:</b>	GREAT WESTERN OPERATING COMPANY	<b>Local Co-ordinate Reference:</b>	Well RAINDANCE FC 23-272HC
<b>Project:</b>	WELD COUNTY	<b>TVD Reference:</b>	KB 20' @ 4808.00usft
<b>Site:</b>	SEC 30-T6N-R67W	<b>MD Reference:</b>	KB 20' @ 4808.00usft
<b>Well:</b>	RAINDANCE FC 23-272HC	<b>North Reference:</b>	True
<b>Wellbore:</b>	OWB	<b>Survey Calculation Method:</b>	Minimum Curvature
<b>Design:</b>	FINAL SURVEY	<b>Database:</b>	EDM 5000.16 Single User Db

Survey									
Measured Depth (usft)	Inclination (°)	Azimuth (°)	Vertical Depth (usft)	+N/-S (usft)	+E/-W (usft)	Vertical Section (usft)	Dogleg Rate (°/100ft)	Build Rate (°/100ft)	Turn Rate (°/100ft)
8,239.00	65.18	292.24	7,117.10	2,463.51	527.99	-37.24	9.80	6.74	-8.06
8,329.00	69.32	284.91	7,151.94	2,489.85	449.38	45.01	8.80	4.60	-8.14
8,419.00	77.24	284.59	7,177.81	2,511.77	366.09	130.97	8.81	8.80	-0.36
8,508.00	84.75	279.64	7,191.74	2,530.16	280.23	218.77	10.07	8.44	-5.56
8,598.00	91.28	276.32	7,194.85	2,542.63	191.21	308.51	8.14	7.26	-3.69
8,688.00	92.06	268.38	7,192.23	2,546.32	101.40	397.32	8.86	0.86	-8.82
8,778.00	92.15	268.50	7,188.92	2,543.87	11.49	485.02	0.17	0.10	0.13
8,867.00	91.95	268.56	7,185.74	2,541.59	-77.42	571.78	0.23	-0.22	0.07
8,957.00	91.61	267.95	7,182.94	2,538.85	-167.34	659.43	0.78	-0.38	-0.68
9,046.00	90.12	268.09	7,181.60	2,535.78	-256.27	746.06	1.68	-1.67	0.16
9,136.00	89.66	269.15	7,181.77	2,533.61	-346.24	833.88	1.28	-0.51	1.18
9,225.00	89.69	269.18	7,182.27	2,532.31	-435.23	920.90	0.05	0.03	0.03
9,315.00	90.04	269.68	7,182.49	2,531.42	-525.23	1,008.99	0.68	0.39	0.56
9,405.00	89.65	269.29	7,182.73	2,530.61	-615.22	1,097.10	0.61	-0.43	-0.43
9,495.00	89.66	269.29	7,183.27	2,529.49	-705.21	1,185.15	0.01	0.01	0.00
9,584.00	89.71	269.10	7,183.76	2,528.24	-794.20	1,272.18	0.22	0.06	-0.21
9,674.00	89.72	269.67	7,184.21	2,527.28	-884.20	1,360.26	0.63	0.01	0.63
9,763.00	89.33	270.16	7,184.95	2,527.14	-973.19	1,447.52	0.70	-0.44	0.55
9,853.00	89.45	269.61	7,185.91	2,526.96	-1,063.19	1,535.75	0.63	0.13	-0.61
9,943.00	89.16	269.68	7,187.00	2,526.41	-1,153.18	1,623.90	0.33	-0.32	0.08
10,033.00	90.90	269.86	7,186.95	2,526.04	-1,243.18	1,712.10	1.94	1.93	0.20
10,122.00	91.40	269.84	7,185.16	2,525.81	-1,332.16	1,799.33	0.56	0.56	-0.02
10,212.00	91.20	269.37	7,183.12	2,525.19	-1,422.13	1,887.45	0.57	-0.22	-0.52
10,302.00	91.69	270.00	7,180.85	2,524.70	-1,512.10	1,975.59	0.89	0.54	0.70
10,392.00	91.33	269.84	7,178.48	2,524.57	-1,602.07	2,063.81	0.44	-0.40	-0.18
10,481.00	91.59	269.96	7,176.21	2,524.42	-1,691.04	2,151.04	0.32	0.29	0.13
10,571.00	91.49	269.76	7,173.79	2,524.20	-1,781.01	2,239.24	0.25	-0.11	-0.22
10,661.00	91.36	269.61	7,171.56	2,523.70	-1,870.98	2,327.38	0.22	-0.14	-0.17
10,750.00	94.73	269.54	7,166.83	2,523.04	-1,959.84	2,414.40	3.79	3.79	-0.08
10,840.00	94.51	269.44	7,159.58	2,522.24	-2,049.54	2,502.23	0.27	-0.24	-0.11
10,930.00	95.00	269.24	7,152.12	2,521.21	-2,139.22	2,589.99	0.59	0.54	-0.22
11,020.00	94.91	269.73	7,144.35	2,520.40	-2,228.88	2,677.77	0.55	-0.10	0.54
11,109.00	94.96	269.84	7,136.69	2,520.07	-2,317.55	2,764.67	0.14	0.06	0.12
11,199.00	94.79	269.81	7,129.04	2,519.80	-2,407.23	2,852.57	0.19	-0.19	-0.03
11,289.00	94.49	269.36	7,121.76	2,519.15	-2,496.93	2,940.42	0.60	-0.33	-0.50
11,379.00	93.73	269.44	7,115.31	2,518.21	-2,586.69	3,028.27	0.85	-0.84	0.09
11,468.00	93.92	269.58	7,109.37	2,517.45	-2,675.49	3,115.22	0.26	0.21	0.16
11,558.00	93.58	269.43	7,103.49	2,516.67	-2,765.30	3,203.14	0.41	-0.38	-0.17
11,648.00	93.88	270.20	7,097.63	2,516.38	-2,855.10	3,291.17	0.92	0.33	0.86
11,738.00	93.81	269.81	7,091.60	2,516.39	-2,944.90	3,379.24	0.44	-0.08	-0.43
11,827.00	93.87	270.35	7,085.64	2,516.51	-3,033.70	3,466.36	0.61	0.07	0.61

## Survey Report

<b>Company:</b>	GREAT WESTERN OPERATING COMPANY	<b>Local Co-ordinate Reference:</b>	Well RAINDANCE FC 23-272HC
<b>Project:</b>	WELD COUNTY	<b>TVD Reference:</b>	KB 20' @ 4808.00usft
<b>Site:</b>	SEC 30-T6N-R67W	<b>MD Reference:</b>	KB 20' @ 4808.00usft
<b>Well:</b>	RAINDANCE FC 23-272HC	<b>North Reference:</b>	True
<b>Wellbore:</b>	OWB	<b>Survey Calculation Method:</b>	Minimum Curvature
<b>Design:</b>	FINAL SURVEY	<b>Database:</b>	EDM 5000.16 Single User Db

Survey										
Measured Depth (usft)	Inclination (°)	Azimuth (°)	Vertical Depth (usft)	+N/-S (usft)	+E/-W (usft)	Vertical Section (usft)	Dogleg Rate (°/100ft)	Build Rate (°/100ft)	Turn Rate (°/100ft)	
11,917.00	93.93	270.35	7,079.51	2,517.06	-3,123.49	3,554.53	0.07	0.07	0.00	
12,006.00	93.78	270.10	7,073.53	2,517.41	-3,212.29	3,641.69	0.33	-0.17	-0.28	
12,096.00	94.94	270.34	7,066.69	2,517.76	-3,302.03	3,729.77	1.32	1.29	0.27	
12,186.00	96.87	269.38	7,057.43	2,517.54	-3,391.54	3,817.53	2.39	2.14	-1.07	
12,275.00	96.85	269.43	7,046.80	2,516.62	-3,479.90	3,904.01	0.06	-0.02	0.06	
12,365.00	96.85	269.42	7,036.07	2,515.72	-3,569.25	3,991.47	0.01	0.00	-0.01	
12,454.00	96.94	269.78	7,025.38	2,515.11	-3,657.61	4,078.00	0.41	0.10	0.40	
12,544.00	96.91	270.20	7,014.53	2,515.09	-3,746.95	4,165.63	0.46	-0.03	0.47	
12,634.00	96.73	269.94	7,003.84	2,515.20	-3,836.31	4,253.29	0.35	-0.20	-0.29	
12,724.00	94.86	270.22	6,994.75	2,515.33	-3,925.85	4,341.13	2.10	-2.08	0.31	
12,813.00	93.50	269.70	6,988.27	2,515.26	-4,014.61	4,428.18	1.64	-1.53	-0.58	
12,903.00	90.90	269.91	6,984.81	2,514.96	-4,104.54	4,516.32	2.90	-2.89	0.23	
12,993.00	89.94	269.60	6,984.15	2,514.57	-4,194.53	4,604.51	1.12	-1.07	-0.34	
13,082.00	89.85	270.02	6,984.32	2,514.28	-4,283.53	4,691.74	0.48	-0.10	0.47	
13,172.00	89.39	269.33	6,984.91	2,513.77	-4,373.53	4,779.91	0.92	-0.51	-0.77	
13,262.00	89.53	269.75	6,985.76	2,513.05	-4,463.52	4,868.03	0.49	0.16	0.47	
13,352.00	89.64	270.30	6,986.41	2,513.08	-4,553.52	4,956.30	0.62	0.12	0.61	
13,441.00	89.85	270.48	6,986.81	2,513.69	-4,642.51	5,043.71	0.31	0.24	0.20	
13,531.00	89.64	269.56	6,987.21	2,513.72	-4,732.51	5,131.98	1.05	-0.23	-1.02	
13,621.00	89.63	269.86	6,987.78	2,513.27	-4,822.51	5,220.16	0.33	-0.01	0.33	
13,710.00	90.19	270.28	6,987.92	2,513.38	-4,911.51	5,307.47	0.79	0.63	0.47	
13,800.00	90.34	269.15	6,987.51	2,512.93	-5,001.50	5,395.65	1.27	0.17	-1.26	
13,890.00	91.05	268.90	6,986.42	2,511.40	-5,091.48	5,483.60	0.84	0.79	-0.28	
13,979.00	91.05	268.56	6,984.78	2,509.42	-5,180.45	5,570.47	0.38	0.00	-0.38	
14,069.00	90.85	268.59	6,983.29	2,507.19	-5,270.41	5,658.27	0.22	-0.22	0.03	
14,159.00	91.10	269.59	6,981.76	2,505.76	-5,360.38	5,746.23	1.15	0.28	1.11	
14,248.00	91.04	269.29	6,980.10	2,504.89	-5,449.36	5,833.34	0.34	-0.07	-0.34	
14,338.00	91.00	268.96	6,978.50	2,503.51	-5,539.34	5,921.31	0.37	-0.04	-0.37	
14,428.00	91.08	269.19	6,976.86	2,502.06	-5,629.31	6,009.27	0.27	0.09	0.26	
14,517.00	91.11	269.04	6,975.16	2,500.69	-5,718.28	6,096.27	0.17	0.03	-0.17	
14,607.00	92.25	269.61	6,972.52	2,499.63	-5,808.24	6,184.29	1.42	1.27	0.63	
14,697.00	92.20	269.84	6,969.03	2,499.19	-5,898.17	6,272.41	0.26	-0.06	0.26	
14,787.00	92.23	270.06	6,965.55	2,499.12	-5,988.10	6,360.60	0.25	0.03	0.24	
14,876.00	92.21	270.15	6,962.10	2,499.28	-6,077.03	6,447.85	0.10	-0.02	0.10	
14,966.00	90.30	269.32	6,960.13	2,498.86	-6,167.01	6,536.01	2.31	-2.12	-0.92	
15,056.00	89.60	269.21	6,960.21	2,497.71	-6,257.00	6,624.05	0.79	-0.78	-0.12	
15,146.00	89.97	269.29	6,960.55	2,496.53	-6,346.99	6,712.08	0.42	0.41	0.09	
15,236.00	90.91	269.62	6,959.86	2,495.67	-6,436.98	6,800.18	1.11	1.04	0.37	
15,325.00	90.96	269.42	6,958.41	2,494.93	-6,525.97	6,887.31	0.23	0.06	-0.22	
15,415.00	91.08	269.35	6,956.80	2,493.96	-6,615.95	6,975.37	0.15	0.13	-0.08	
15,505.00	91.04	269.48	6,955.14	2,493.04	-6,705.93	7,063.44	0.15	-0.04	0.14	
15,595.00	91.20	269.76	6,953.38	2,492.45	-6,795.91	7,151.58	0.36	0.18	0.31	
15,684.00	91.24	269.52	6,951.48	2,491.89	-6,884.89	7,238.74	0.27	0.04	-0.27	

## Survey Report

<b>Company:</b>	GREAT WESTERN OPERATING COMPANY	<b>Local Co-ordinate Reference:</b>	Well RAINDANCE FC 23-272HC
<b>Project:</b>	WELD COUNTY	<b>TVD Reference:</b>	KB 20' @ 4808.00usft
<b>Site:</b>	SEC 30-T6N-R67W	<b>MD Reference:</b>	KB 20' @ 4808.00usft
<b>Well:</b>	RAINDANCE FC 23-272HC	<b>North Reference:</b>	True
<b>Wellbore:</b>	OWB	<b>Survey Calculation Method:</b>	Minimum Curvature
<b>Design:</b>	FINAL SURVEY	<b>Database:</b>	EDM 5000.16 Single User Db

Survey										
Measured Depth (usft)	Inclination (°)	Azimuth (°)	Vertical Depth (usft)	+N/-S (usft)	+E/-W (usft)	Vertical Section (usft)	Dogleg Rate (°/100ft)	Build Rate (°/100ft)	Turn Rate (°/100ft)	
15,774.00	91.13	269.63	6,949.62	2,491.22	-6,974.86	7,326.86	0.17	-0.12	0.12	
15,864.00	90.83	269.76	6,948.08	2,490.74	-7,064.85	7,415.02	0.36	-0.33	0.14	
15,953.00	91.48	271.74	6,946.29	2,491.91	-7,153.82	7,502.51	2.34	0.73	2.22	
16,043.00	91.15	269.25	6,944.22	2,492.68	-7,243.78	7,590.90	2.79	-0.37	-2.77	
16,133.00	91.38	269.79	6,942.24	2,491.93	-7,333.76	7,679.00	0.65	0.26	0.60	
16,222.00	91.43	269.71	6,940.05	2,491.54	-7,422.73	7,766.18	0.11	0.06	-0.09	
16,312.00	91.23	269.98	6,937.97	2,491.30	-7,512.71	7,854.38	0.37	-0.22	0.30	
16,402.00	90.86	270.00	6,936.32	2,491.28	-7,602.69	7,942.63	0.41	-0.41	0.02	
16,491.00	90.86	269.58	6,934.99	2,490.96	-7,691.68	8,029.85	0.47	0.00	-0.47	
16,581.00	89.59	268.24	6,934.63	2,489.24	-7,781.66	8,117.77	2.05	-1.41	-1.49	
16,671.00	89.96	269.45	6,934.99	2,487.43	-7,871.64	8,205.66	1.41	0.41	1.34	
16,761.00	89.54	269.79	6,935.38	2,486.83	-7,961.64	8,293.81	0.60	-0.47	0.38	
16,850.00	89.46	269.93	6,936.16	2,486.62	-8,050.63	8,381.06	0.18	-0.09	0.16	
16,940.00	89.63	270.24	6,936.87	2,486.75	-8,140.63	8,469.35	0.39	0.19	0.34	
17,029.00	89.82	269.32	6,937.30	2,486.41	-8,229.63	8,556.57	1.06	0.21	-1.03	
17,119.00	89.83	269.63	6,937.57	2,485.58	-8,319.62	8,644.68	0.34	0.01	0.34	
17,209.00	90.34	269.83	6,937.44	2,485.16	-8,409.62	8,732.86	0.61	0.57	0.22	
17,299.00	90.60	269.19	6,936.70	2,484.39	-8,499.61	8,820.98	0.77	0.29	-0.71	
17,388.00	90.65	269.19	6,935.73	2,483.13	-8,588.60	8,908.01	0.06	0.06	0.00	
17,478.00	90.69	269.72	6,934.68	2,482.27	-8,678.59	8,996.10	0.59	0.04	0.59	
17,568.00	90.57	269.46	6,933.69	2,481.63	-8,768.58	9,084.24	0.32	-0.13	-0.29	
17,657.00	90.49	269.48	6,932.87	2,480.81	-8,857.57	9,171.36	0.09	-0.09	0.02	
17,747.00	90.42	268.54	6,932.15	2,479.25	-8,947.56	9,259.31	1.05	-0.08	-1.04	
17,836.00	90.86	266.52	6,931.16	2,475.42	-9,036.46	9,345.76	2.32	0.49	-2.27	
17,926.00	90.95	269.98	6,929.74	2,472.67	-9,126.40	9,433.43	3.85	0.10	3.84	
18,016.00	90.63	269.82	6,928.49	2,472.51	-9,216.39	9,521.66	0.40	-0.36	-0.18	
18,105.00	90.60	269.52	6,927.54	2,472.00	-9,305.38	9,608.84	0.34	-0.03	-0.34	
18,195.00	90.73	269.71	6,926.49	2,471.40	-9,395.37	9,696.99	0.26	0.14	0.21	
18,285.00	90.78	269.83	6,925.31	2,471.03	-9,485.36	9,785.18	0.14	0.06	0.13	
18,375.00	90.90	270.16	6,923.99	2,471.03	-9,575.35	9,873.44	0.39	0.13	0.37	
18,464.00	92.50	269.69	6,921.35	2,470.91	-9,664.31	9,960.67	1.87	1.80	-0.53	
18,554.00	93.48	269.80	6,916.65	2,470.51	-9,754.19	10,048.74	1.10	1.09	0.12	
18,643.00	95.21	269.44	6,909.91	2,469.92	-9,842.93	10,135.66	1.99	1.94	-0.40	
18,733.00	98.43	270.05	6,899.23	2,469.52	-9,932.28	10,223.21	3.64	3.58	0.68	
18,823.00	101.37	269.63	6,883.75	2,469.28	-10,020.93	10,310.11	3.30	3.27	-0.47	
18,913.00	103.48	269.06	6,864.39	2,468.27	-10,108.81	10,396.11	2.42	2.34	-0.63	
19,002.00	104.87	269.44	6,842.60	2,467.14	-10,195.09	10,480.51	1.62	1.56	0.43	
19,092.00	104.77	269.03	6,819.58	2,465.98	-10,282.08	10,565.61	0.45	-0.11	-0.46	
19,182.00	106.03	270.44	6,795.67	2,465.58	-10,368.85	10,650.62	2.06	1.40	1.57	
19,271.00	105.31	270.10	6,771.64	2,465.98	-10,454.54	10,734.75	0.89	-0.81	-0.38	
19,361.00	105.27	270.57	6,747.90	2,466.49	-10,541.35	10,819.99	0.51	-0.04	0.52	
19,450.00	102.80	269.81	6,726.32	2,466.77	-10,627.69	10,904.72	2.90	-2.78	-0.85	
19,540.00	102.83	269.62	6,706.36	2,466.33	-10,715.44	10,990.71	0.21	0.03	-0.21	
19,630.00	102.72	270.21	6,686.46	2,466.20	-10,803.22	11,076.77	0.65	-0.12	0.66	

## Survey Report

<b>Company:</b>	GREAT WESTERN OPERATING COMPANY	<b>Local Co-ordinate Reference:</b>	Well RAINDANCE FC 23-272HC
<b>Project:</b>	WELD COUNTY	<b>TVD Reference:</b>	KB 20' @ 4808.00usft
<b>Site:</b>	SEC 30-T6N-R67W	<b>MD Reference:</b>	KB 20' @ 4808.00usft
<b>Well:</b>	RAINDANCE FC 23-272HC	<b>North Reference:</b>	True
<b>Wellbore:</b>	OWB	<b>Survey Calculation Method:</b>	Minimum Curvature
<b>Design:</b>	FINAL SURVEY	<b>Database:</b>	EDM 5000.16 Single User Db

Survey										
Measured Depth (usft)	Inclination (°)	Azimuth (°)	Vertical Depth (usft)	+N/-S (usft)	+E/-W (usft)	Vertical Section (usft)	Dogleg Rate (°/100ft)	Build Rate (°/100ft)	Turn Rate (°/100ft)	
19,719.00	101.37	270.09	6,667.88	2,466.43	-10,890.25	11,162.18	1.52	-1.52	-0.13	
19,809.00	101.12	270.04	6,650.33	2,466.53	-10,978.53	11,248.77	0.28	-0.28	-0.06	
19,899.00	101.37	269.74	6,632.78	2,466.36	-11,066.80	11,335.32	0.43	0.28	-0.33	
19,989.00	102.44	269.31	6,614.22	2,465.63	-11,154.86	11,421.54	1.28	1.19	-0.48	
20,078.00	104.72	269.42	6,593.32	2,464.67	-11,241.36	11,506.19	2.56	2.56	0.12	
20,168.00	107.07	269.10	6,568.67	2,463.56	-11,327.90	11,590.86	2.63	2.61	-0.36	
20,257.00	108.85	268.70	6,541.23	2,461.93	-11,412.55	11,673.56	2.05	2.00	-0.45	
20,347.00	109.06	269.22	6,512.00	2,460.39	-11,497.65	11,756.73	0.59	0.23	0.58	
20,437.00	109.17	268.99	6,482.53	2,459.06	-11,582.68	11,839.86	0.27	0.12	-0.26	
20,526.00	109.30	269.67	6,453.21	2,458.08	-11,666.71	11,922.08	0.74	0.15	0.76	
20,616.00	109.14	269.87	6,423.58	2,457.74	-11,751.69	12,005.36	0.28	-0.18	0.22	
20,705.00	108.57	269.04	6,394.81	2,456.93	-11,835.91	12,087.81	1.09	-0.64	-0.93	
20,795.00	106.66	269.15	6,367.58	2,455.58	-11,921.67	12,171.66	2.13	-2.12	0.12	
20,885.00	106.10	269.99	6,342.20	2,454.93	-12,008.02	12,256.22	1.09	-0.62	0.93	
20,975.00	106.25	269.37	6,317.13	2,454.45	-12,094.45	12,340.90	0.68	0.17	-0.69	
21,064.00	105.96	269.48	6,292.44	2,453.59	-12,179.95	12,424.59	0.35	-0.33	0.12	
21,154.00	106.36	269.40	6,267.39	2,452.75	-12,266.39	12,509.21	0.45	0.44	-0.09	
21,177.00	106.59	269.69	6,260.87	2,452.57	-12,288.45	12,530.80	1.57	1.00	1.26	
21,219.00	106.59	269.69	6,248.88	2,452.35	-12,328.70	12,570.24	0.00	0.00	0.00	