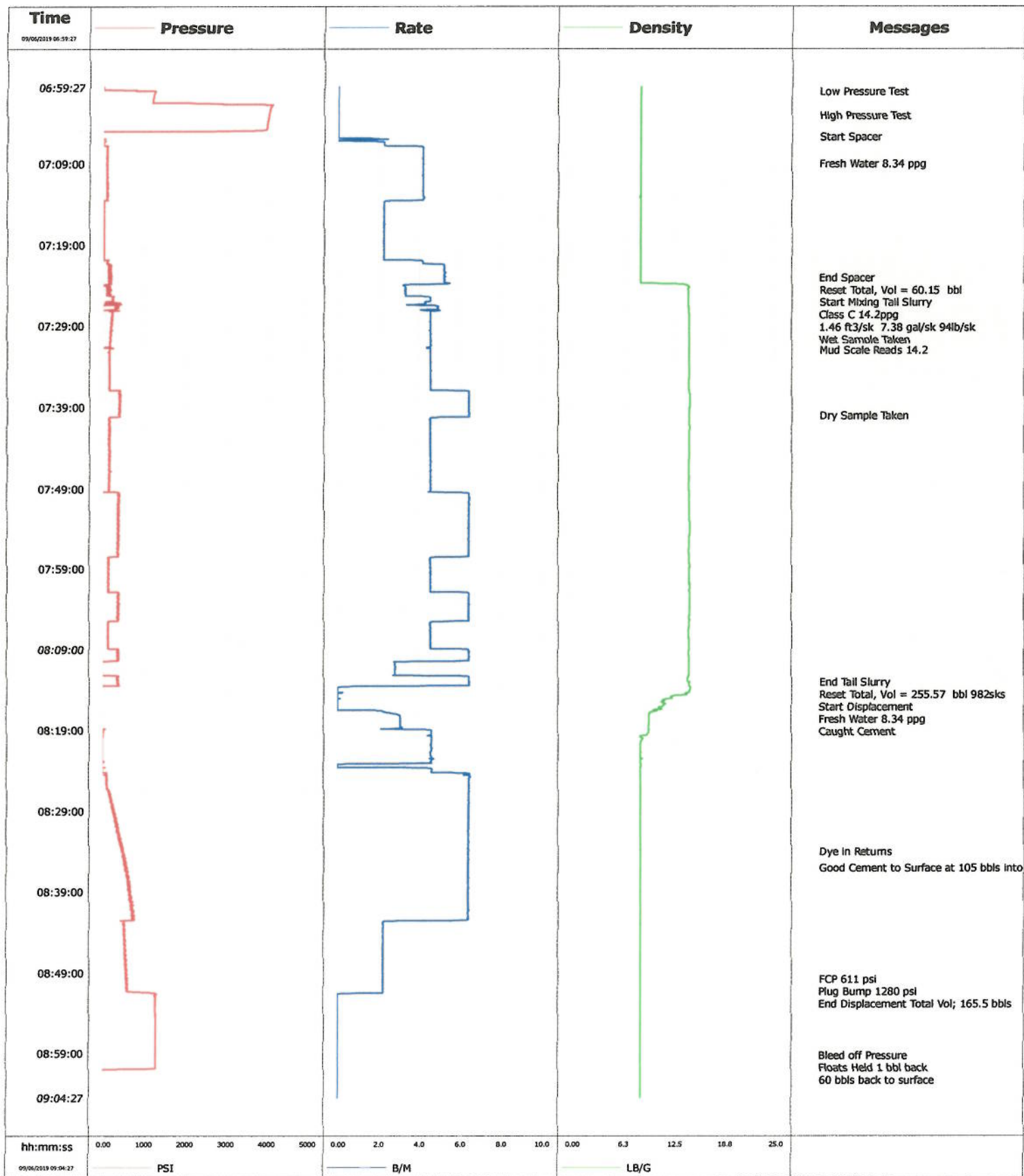


Well	Dream Weaver South 3K-21H-N26	Client	Crestone Peak Resources
Field	Wildcat	SIR No.	3042982
Engineer	Marco Arrington	Job Type	Surface
Country	United States	Job Date	9-6-2019



				Customer Crestone Peak Resources		Job Number 3042982	
Well Dream Weaver South 3K-21H-N26 3K-21H-N26			Location (legal)		Schlumberger Location Cheyenne		Job Start Sep/06/2019
Field Wildcat		Formation Name/Type		Deviation deg	Bit Size 13.5 in	Well MD 2225.1 ft	Well TVD 2226.1 ft
County Weld		State/Province Colorado		BHP psi	BHST 110 degF	BHCT 85 degF	Pore Press. Gradient lb/gal
Well Master		API/UWI 05-123-47949					
Rig Name Ensign 122	Drilled For Oil Producer	Service Via Land		Casing/Liner			
				Depth, ft	Size, in	Weight, lb/ft	Grade
				2223.5	9.6	40.0	J-55
				0.0	0.0	0.0	
Offshore Zone		Well Class New	Well Type Development				
Drilling Fluid Type Spud Mud		Max. Density 8.70 lb/gal	Plastic Viscosity 27.000 cP	Tubing/Drill Pipe			
				T/D	Depth, ft	Size, in	Weight, lb/ft
							Grade
							Thread
Service Line Cementing		Job Type Surface					
Max. Allowed Tub. Press 2000 psi		Max. Allowed Ann. Press psi	WH Connection	Perforations/Open Hole			
				Top, ft	Bottom, ft	shot/ft	No. of Shots
				ft	ft		Total Interval
				ft	ft		Diameter
				ft	ft		in
Service Instructions Test lines 500psi 4000 psi. Start Cementing surface casing. Pump 60 bbl water space with red dye. Pump Neat Class C Tail Slurry: 982sk, 255 bbls 14.2 ppg 1.46 yield 7.4 gal/sk. Shut down, Drop plug, Wash/Flush lines on top of plug. Total displacement fresh water 165 bbls. Bump plug at 2 bpm FCP 611 psi pressured to 1280 psi, hold 5 min, floats held 1.0 bbl back. Good returns, 60 bbls water and 60 bbl cement to surface. No fall back.				Treat Down Casing	Displacement 165.5 bbl	Packer Type	Packer Depth ft
				Tubing Vol. bbl	Casing Vol. 168.8 bbl	Annular Vol. 200.0 bbl	Openhole Vol. 183.9 bbl
Casing/Tubing Secured <input type="checkbox"/>		1 Hole Vol. Circulated prior to Cement <input checked="" type="checkbox"/>		Casing Tools		Squeeze Job	
Lift Pressure 1280 psi				Shoe Type Guide		Squeeze Type	
Pipe Rotated <input checked="" type="checkbox"/>		Pipe Reciprocated <input type="checkbox"/>		Shoe Depth 2223.5 ft		Tool Type	
No. Centralizers		Top Plugs 1	Bottom Plugs	Stage Tool Type		Tool Depth ft	
Cement Head Type Single				Stage Tool Depth ft		Tail Pipe Size in	
Job Scheduled For Sep/06/2019 05:30		Arrived on Location Sep/06/2019 05:30	Leave Location Aug/25/2019 10:00	Collar Type Float		Tail Pipe Depth ft	
				Collar Depth 2184.4 ft		Sqz. Total Vol. bbl	
Date	Time 24-hr clock	Treating Pressure PSI	Flow Rate B/M	Density LB/G	Message		
09/06/2019	06:59:27	0	0.0	8.38	Start Job		
09/06/2019	07:00:00	1270	0.0	8.37	Low Pressure Test		
09/06/2019	07:03:00	4050	0.0	8.37	High Pressure Test		
09/06/2019	07:05:39	-98	0.0	8.38	Start Spacer		
09/06/2019	07:09:00	86	4.2	8.38	Fresh Water 8.34 ppg		
09/06/2019	07:23:00	129	5.2	8.39	End Spacer		
09/06/2019	07:23:35	163	5.2	8.39	Reset Total, Vol = 60.15 bbl		
09/06/2019	07:24:00	104	3.2	14.08	Start Mixing Tail Slurry		
09/06/2019	07:25:00	81	3.3	14.24	Class C 14.2ppg		
09/06/2019	07:26:00	59	4.4	14.21	1.46 ft3/sk 7.38 gal/sk 94lb/sk		
09/06/2019	07:30:00	199	4.6	14.33	Wet Sample Taken		
09/06/2019	07:32:00	164	4.6	14.32	Mud Scale Reads 14.2		
09/06/2019	07:40:00	382	6.4	14.35	Dry Sample Taken		
09/06/2019	08:13:00	343	6.5	14.28	End Tail Slurry		
09/06/2019	08:13:32	-131	1.6	14.36	Reset Total, Vol = 255.57 bbl 982sk		
09/06/2019	08:15:00	-130	0.0	12.25	Start Displacement		
09/06/2019	08:16:00	-130	0.0	11.19	Fresh Water 8.34 ppg		
09/06/2019	08:17:00	-64	2.9	9.49	Caught Cement		
09/06/2019	08:34:00	492	6.4	8.39	Dye in Returns		
09/06/2019	08:36:00	555	6.4	8.39	Good Cement to Surface at 105 bbls into Displacement		
09/06/2019	08:49:44	588	2.2	8.39	FCP 611 psi		

Well Dream Weaver South 3K-21H-N26 3K-21H-N26			Field Wildcat	Job Start Sep/06/2019	Customer Crestone Peak Resources	Job Number 3042982
Date	Time 24-hr clock	Treating Pressure PSI	Flow Rate B/M	Density LB/G	Message	
09/06/2019	08:50:08	576	2.2	8.39	End Displacement Total Vol; 165.5 bbls	
09/06/2019	08:59:12	1298	0.0	8.39	Bleed off Pressure	
09/06/2019	09:00:00	1299	0.0	8.39	Floats Held 1 bbl back	

Post Job Summary

Average Pump Rates, bbl/min					Volume of Fluid Injected, bbl					
Slurry 5.0	N2	Mud	Maximum Rate 8.0		Total Slurry 255.0	Mud	Spacer 60.0	N2		
Treating Pressure Summary, psi					Breakdown Fluid					
Maximum	Final 0	Average	Bump Plug to 688	Breakdown	Type FreshWater	Volume 165.5 bbl		Density 8.34 lb/gal		
Avg. N2 Percent %	Designed Slurry Volume 0.0 bbl		Displacement 165.5 bbl	Mix Water Temp 68 degF	Cement Circulated to Surface? <input checked="" type="checkbox"/>		Volume 60.0 bbl			
Customer or Authorized Representative Company Man			Schlumberger Supervisor Marco Arrington			Washed Thru Perfs <input type="checkbox"/>	To ft			
						Circulation Lost <input type="checkbox"/>	Job Completed <input checked="" type="checkbox"/>			
						-	-			