

**DCP – MEWBOURN GAS PLANT SITE  
FORM 27 SUPPLEMENTAL SUMMARY REPORT  
Fourth Quarter 2021 Soil and Groundwater**

**ATTACHMENTS**

**Tables**

- |   |   |
|---|---|
| 1 | Soil VOC Analytical Results Summary Table – December 7, 2021    |
| 2 | Soil PAH Analytical Results Summary Table – December 7, 2021    |
| 3 | Groundwater Elevation Summary – December 8, 2021                |
| 4 | Groundwater Analytical Results – December 8, 2021               |
| 5 | Historical Groundwater and Surface Water Analytical Results     |
| 6 | Site-Specific Sampling and Analysis Plan – Soil and Groundwater |

**Figures**

- |   |  |
|---|--|
| 1 | Site Location Map                                    |
| 2 | Site Overview Map                                    |
| 3 | Soil Analytical Map – December 7, 2021               |
| 4 | Groundwater Elevation Contour Map – December 8, 2021 |
| 5 | Groundwater Analytical Map – December 8, 2021        |
| 6 | Proposed Monitoring Well Locations                   |

**Appendix**

- |   |   |
|---|---|
| A | Laboratory Analytical Reports                       |
|   | - Summit Laboratory Report: #2112138 (Soil)         |
|   | - Origins Laboratory Report: #Y112238 (Groundwater) |
| B | Monitoring Well Construction Logs                   |
| C | Access Agreement Timeline                           |

Table 1  
Mewbourn Gas Plant  
Volatile Organic Compound Soil Sample Results  
Weld County, Colorado

Sample ID	Date Sampled	Lab Report	PID Reading (PPM)		Benzene (mg/kg)	Toluene (mg/kg)	Ethylbenzene (mg/kg)	Total Xylenes (mg/kg)	1,2,4-Trimethylbenzene (mg/kg)	1,3,5-Trimethylbenzene (mg/kg)	Naphthalene (mg/kg)		TPH (mg/kg)	Comments
COGCC Protection of Groundwater Soil Screening Level Standards Risk & MCL Based <sup>(1 &amp; 2)</sup> (mg/kg)	-	-	-		0.0026 (M)	0.69 (M)	0.78 (M)	9.9 (M)	0.0081 (R)	0.0087 (R)	0.0038 (R)		500	
MW12@22'	12/7/2021	2112138	1270		0.044	<0.0050	0.51	1.7	6.5	3.9	0.050		400	GRO - 210 mg/kg; DRO - 190 mg/kg
MW12@24'	12/7/2021	2112138	165.4		0.018	<0.0050	<0.0050	<0.010	<0.0050	<0.0050	<0.0038		<50	
MW13@20'	12/7/2021	2112138	239.1		0.0079	<0.0050	<0.0050	<0.010	<0.0050	<0.0050	<0.0038		<50	
MW13@24'	12/7/2021	2112138	0.6		<0.0020	<0.0050	<0.0050	<0.010	<0.0050	<0.0050	<0.0038		<50	
MW14@16'	12/7/2021	2112138	0.0		<0.0020	<0.0050	<0.0050	<0.010	<0.0050	<0.0050	<0.0038		<50	

Notes:

- 1). The environmental cleanup standards for soil that are applicable to this site are the Colorado Oil and Gas Conservation Commission (COGCC) standards for contaminants in soil according to Table 910-1 (Prior to January 15th, 2021) and Table 915-1 (Post January 15, 2021) of the COGCC 900 Series Rule for E&P Waste Management.
- 2). Standards for Soil are referenced from the 2 CCR 404-1, Table 915-1, effective January 15, 2021. If there is no pathway for communication with Groundwater, then residential soil screening levels apply for organic compounds and metals. If the Director determines that a pathway to Groundwater exists, then the protection of Groundwater soil screening levels will apply, secondary to actual measured concentrations of the contaminants of concern in Groundwater.
- 3). The letter “(R)” following a protection of Groundwater soil screening level indicates the concentration is derived from a risk-based approach. The letter “(M)” following a protection of Groundwater soil screening level indicates the concentration is derived from the drinking water MCL.
- 4). TPH - Total volatile (C<sub>6</sub> - C<sub>10</sub>) and extractable (C<sub>10</sub> - C<sub>36</sub>) petroleum hydrocarbons.

Concentrations (mg/kg) Risk Based and MCL Based.

mg/kg= Milligrams per kilogram.

ppm - Parts per million

Bold values indicate an exceedance of the Site Specific and/or the COGCC soil standards for the Site.

Table 915 note - If the method detection limit (“MDL”) or practical quantitation limit (“PQL”) for a pollutant is higher (less stringent) than a threshold concentration listed in Table 915-1, the Director may allow an Operator to substitute the MDL or PQL for the concentration listed in Table 915-1.

Table 2  
Mewbourn Gas Plant  
Polyaromatic Hydrocarbon (PAHs) Soil Sample Results  
Weld County, Colorado

Sample ID	Date Sampled	Lab Report	PID Reading (PPM)		Acenaphthene (mg/kg)	Anthracene (mg/kg)	Benz(a)anthracene (mg/kg)	Benzo(b)fluoranthene (mg/kg)	Benzo(k)fluoranthene (mg/kg)	Benzo(a)pyrene (mg/kg)	Chrysene (mg/kg)	Dibenzo(a,h)anthracene (mg/kg)	Fluoranthene (mg/kg)	Fluorene (mg/kg)	Indeno(1,2,3-cd)pyrene (mg/kg)	1-methylnaphthalene (mg/kg)	2-methylnaphthalene (mg/kg)	Pyrene (mg/kg)	Comments
COGCC Protection of Groundwater Soil Screening Level Standards Risk & MCL Based <sup>(1 &amp; 2)</sup> (mg/kg)	-	-	-		0.55 (R)	5.8 (R)	0.011 (R)	0.3 (R)	2.9 (R)	0.24 (M)	9 (R)	0.096 (R)	8.9 (R)	0.54 (R)	0.98 (R)	0.006 (R)	0.019 (R)	1.3 (R)	
MW12@22'	12/7/2021	2112138	1270		-	-	<0.00500	-	-	-	-	-	-	0.00979	-	0.0800	0.169	-	-
MW12@24'	12/7/2021	2112138	165.4		-	-	<0.00500	-	-	-	-	-	-	<0.00500	-	<0.00500	<0.00500	-	-
MW13@20'	12/7/2021	2112138	239.1		-	-	<0.00500	-	-	-	-	-	-	<0.00500	-	<0.00500	<0.00500	-	-
MW13@24'	12/7/2021	2112138	0.6		-	-	<0.00500	-	-	-	-	-	-	<0.00500	-	<0.00500	<0.00500	-	-
MW14@16'	12/7/2021	2112138	0.0		-	-	<0.00500	-	-	-	-	-	-	<0.00500	-	<0.00500	<0.00500	-	-

1). Standards for Soil are referenced from the 2 CCR 404-1, Table 915-1, effective January 15, 2021.  
2). The letter “(R)” following a protection of Groundwater soil screening level indicates the concentration is derived from a risk-based approach. The letter “(M)” following a protection of Groundwater soil screening level indicates the concentration is derived from the drinking water MCL.

mg/kg= Milligrams per kilogram.  
PPM - Parts per million

PID - Photoionization Detector

Bold values indicate an exceedance of the COGCC soil standards for the Site.

Table 915 note - If the method detection limit (“MDL”) or practical quantitation limit (“PQL”) for a pollutant is higher (less stringent) than a threshold concentration listed in Table 915-1, the Director may allow an Operator to substitute the MDL or PQL for the concentration listed in Table 915-1.

**TABLE 3**  
**FOURTH QUARTER 2021**  
**SUMMARY OF GROUNDWATER ELEVATION DATA**  
**DCP MEWBOURN GAS PLANT**  
**WELD COUNTY, COLORADO**

Location	Date	Depth to Groundwater (feet)	Depth to Product (feet)	Free Phase Hydrocarbon Thickness (feet)	Total Depth (feet)	TOC Elevation (feet amsl)	Groundwater Elevation (feet amsl)	Change in Groundwater Elevation Since Previous Event (1) (feet)
MW01	9/14/2021	12.79			22.33	4820.52	4,807.73	-0.85
MW01	10/19/2021	13.68	-	-	22.33	4820.52	4,806.84	-0.89
MW01	11/18/2021	14.28	-	-	22.33	4820.52	4,806.24	-0.60
MW01	12/8/2021	14.56			22.33	4820.52	4,805.96	-0.28
MW02	9/14/2021	13.18			23.05	4850.71	4,837.53	-0.87
MW02	10/19/2021	14.06	-	-	23.05	4850.71	4,836.65	-0.88
MW02	11/18/2021	12.31	-	-	23.05	4850.71	4,838.40	1.75
MW02	12/8/2021	13.18			23.05	4850.71	4,837.53	-0.87
MW03	9/14/2021	13.73			22.98	4820.59	4,806.86	-0.95
MW03	10/19/2021	14.53	-	-	22.98	4820.59	4,806.06	-0.80
MW03	11/18/2021	14.10	-	-	22.98	4820.59	4,806.49	0.43
MW03	12/8/2021	15.34			22.98	4820.59	4,805.25	-1.24
MW04	9/14/2021	18.45			25.87	4826.13	4,807.68	-0.98
MW04	10/19/2021	19.34	-	-	25.87	4826.13	4,806.79	-0.89
MW04	11/18/2021	20.04	-	-	25.87	4826.13	4,806.09	-0.70
MW04	12/8/2021	20.29			25.87	4826.13	4,805.84	-0.25
MW05	9/14/2021	12.74			22.20	4818.18	4,805.44	-1.43
MW05	10/19/2021	12.87	-	-	22.20	4818.18	4,805.31	-0.13
MW05	11/18/2021	13.42	-	-	22.20	4818.18	4,804.76	-0.55
MW05	12/8/2021	13.62			22.20	4818.18	4,804.56	-0.20
MW06	9/14/2021	11.29			21.89	4817.73	4,806.44	-0.77
MW06	10/19/2021	12.07	-	-	21.89	4817.73	4,805.66	-0.78
MW06	11/18/2021	12.60	-	-	21.89	4817.73	4,805.13	-0.53
MW06	12/8/2021	12.86			21.89	4817.73	4,804.87	-0.26
MW07	9/14/2021	17.92			25.64	4,826.34	4,808.42	-1.01
MW07	10/19/2021	18.99	-	-	25.68	4,826.34	4,807.35	-1.07
MW07	11/18/2021	19.81	-	-	25.68	4,826.34	4,806.53	-0.82
MW07	12/8/2021	20.12			25.64	4,826.34	4,806.22	-0.31
MW08	9/14/2021	14.02			22.38	4,821.00	4,806.98	-1.70
MW08	10/19/2021	14.87	-	-	22.43	4,821.00	4,806.13	-0.85
MW08	11/18/2021	15.50	-	-	22.43	4,821.00	4,805.50	-0.63
MW08	12/8/2021	15.72			22.38	4,821.00	4,805.28	-0.22
MW09	9/14/2021	18.32			24.14	4,830.54	4,812.22	-0.50
MW09	10/19/2021	19.13	-	-	25.33	4,830.54	4,811.41	-0.81
MW09	11/18/2021	19.75	-	-	25.33	4,830.54	4,810.79	-0.62
MW09	12/8/2021	20.14			24.14	4,830.54	4,810.40	-0.39



**TABLE 3**  
**FOURTH QUARTER 2021**  
**SUMMARY OF GROUNDWATER ELEVATION DATA**  
**DCP MEWBOURN GAS PLANT**  
**WELD COUNTY, COLORADO**

MW10	9/14/2021	11.53			22.10	4,821.54	4,810.01	-0.68
MW10	10/19/2021	12.59	-	-	22.10	4,821.54	4,808.95	-1.06
MW10	11/18/2021	13.27	-	-	22.10	4,821.54	4,808.27	-0.68
MW10	12/8/2021	13.61			22.10	4,821.54	4,807.93	-0.34
MW11	9/14/2021	14.23			21.05	4,821.50	4,807.27	-1.21
MW11	10/19/2021	15.21	-	-	21.05	4,821.50	4,806.29	-0.98
MW11	11/18/2021	15.89	-	-	21.05	4,821.50	4,805.61	-0.68
MW11	12/8/2021	16.15			21.05	4,821.50	4,805.35	-0.26
MW12	12/8/2021	19.16	-	-	23.90	4,827.43	4,808.27	NC
MW13	12/8/2021	19.72	-	-	23.25	4,826.92	4,807.20	NC
MW14	12/8/2021	8.67	-	-	15.97	4,812.10	4,803.43	NC
Average Change in Groundwater Elevation (11/18/2021 to 12/8/2021)								-0.42

Notes:

1- Changes in groundwater elevation calculated by subtracting the measurement collected during the previous monitoring event from the measurement collected during the most recent monitoring event.

amsl = feet above mean sea level

TOC = top of casing

Groundwater elevation = (TOC Elevation - Measured Depth to Water) + (LNAPL Thickness in Well \* LNAPL Relative Density)

LNAPL relative density was assumed to be approximately 0.75

NM = Not Measured

TABLE 4  
GROUNDWATER AND SURFACE WATER ANALYTICAL RESULTS  
(DECEMBER 8, 2021)  
DCP MEWBOURN GAS PLANT  
WELD COUNTY, COLORADO

Location Identification	Sample Date	Lab Report	Benzene (µg/l)	Toluene (µg/l)	Ethylbenzene (µg/l)	Total Xylenes (µg/l)	1,2,4-Trimethylbenzene (µg/l)	1,3,5-Trimethylbenzene (µg/l)	Naphthalene (µg/l)	Comments
COGCC Standards (µg/L) <sup>(1)</sup>			5	560	700	1,400	67	67	140	
MW01	12/8/2021	Y112238	912	<10	<5	<5	3.95	<5	<25	Dilution 10
MW02	12/8/2021	Y112238	2,960	<20	241	1,560	228	81	<50	Dilution 50
MW03	12/8/2021	Y112238	<2	<5	<1	<1	1.77	<1	<5	
MW04	12/8/2021	Y112238	33.5	<20	16.6	64.8	206	175	<50	Dilution 10
MW05	12/8/2021	Y112238	200	<5	<1	<1	<1	<1	<5	Dilution 5
MW06	12/8/2021	Y112238	<2	<5	<1	<1	<1	<1	<5	
MW07	12/8/2021	Y112238	<2	<5	<1	<1	<1	<1	<5	
MW08	12/8/2021	Y112238	<5	<10	15.9	408	193	162	<25	Dilution 5
MW09	12/8/2021	Y112238	<2	<5	<1	<1	<1	<1	<5	
MW10	12/8/2021	Y112238	<2	<5	<1	<1	<1	<1	<5	
MW11	12/8/2021	Y112238	<2	<5	<1	<1	<1	<1	<5	
MW12	12/8/2021	Y112238	14,300	<100	566	6,940	388	251	<250	Dilution 200
MW13	12/8/2021	Y112238	690	<5	72.3	52.8	8.56	12.4	<5	Dilution 10
MW14	12/8/2021	Y112238	<2	<5	1.01	5.43	1.4	0.62	<5	

Notes:  
1). The environmental cleanup standards for groundwater that are applicable to this site are the Colorado Oil and Gas Conservation Commission (COGCC) standards for contaminants in groundwater according to Table 915-1 of the COGCC 900  
2). Standards are taken from the Colorado Department of Public Health and Environment - Water Quality Control Commission, 5 CCR 1002-41, Table A - Groundwater Organic Chemical Standards.  
**Bold** values indicate an exceedance of the COGCC groundwater standards for the Site.  
µg/L = micrograms per liter.  
mg/L = milligrams per liter.

TABLE 5  
HISTORICAL  
GROUNDWATER AND SURFACE WATER ANALYTICAL RESULTS  
DCP MEWBOURN GAS PLANT  
WELD COUNTY, COLORADO

Location Identification	Sample Date	Lab Report	Benzene (µg/l)	Toluene (µg/l)	Ethylbenzene (µg/l)	Total Xylenes (µg/l)	1,2,4-Trimethylbenzene (µg/l)	1,3,5-Trimethylbenzene (µg/l)	Naphthalene (µg/l)	Total Dissolved Solids (mg/l)	Chloride (mg/l)	Sulfate (mg/l)	Benzo(a)anthracene (µg/l)	Fluorene (µg/l)	Comments
COGCC Standards (µg/L) <sup>(1)</sup>			5	560	700	1,400	67	67	140	<1.25 x local background)	(250 mg/l or <1.25 x local background)	(250 mg/l or <1.25 x local background)	0.16 <sup>(2)</sup>	280 <sup>(2)</sup>	
MW01	3/16/2021	2103245	420	<1.0	500	370	130	75	29	-	-	-	-	-	
MW01	3/19/2021	2103294	-	-	-	-	-	-	-	1,050	291	1,740	<0.100	6.50	
MW01	6/14/2021	Y106317	123	<4.0	210	164	72.9	52.8	<16.0	-	-	-	-	-	Per Approved SAP
MW01	9/14/2021	Y109257	657	<10.0	140	39.1	12.1	16.2	<40.0	-	-	-	-	-	Dilution 10
MW01	12/8/2021	Y112238	912	<10	<5	<5	3.95	<5	<25	-	-	-	-	-	Dilution 10
MW02	3/16/2021	2103245	1,900	3.8	510	250	320	150	25	620	68.2	4.34	-	-	
MW02	3/19/2021	2103294	-	-	-	-	-	-	-	-	-	-	<0.100	2.56	
MW02	6/14/2021	Y106317	1,710	<4.0	644	7,400	579	306	32.1	-	-	-	-	-	Per Approved SAP
MW02	9/14/2021	Y109257	1,600	<50.0	416	4,780	346	180	<200.0	-	-	-	-	-	Dilution 50
MW02	12/8/2021	Y112238	2,960	<20	241	1,560	228	81	<50	-	-	-	-	-	Dilution 50
MW03	3/16/2021	2103245	120	<1.0	70.0	300	79.0	29.0	3.0	-	-	-	-	-	
MW03	3/19/2021	2103294	-	-	-	-	-	-	-	441	104	1,790	<0.100	<0.200	
MW03	6/14/2021	Y106317	394	<4.0	270	1,350	285	116	<16.0	-	-	-	-	-	Per Approved SAP
MW03	9/14/2021	Y109257	35.3	<1.0	13	42	11.7	2.84	<4.0	-	-	-	-	-	
MW03	12/8/2021	Y112238	<2	<5	<1	<1	1.77	<1	<5	-	-	-	-	-	
MW04	3/16/2021	2103245	45	<1.0	20	67	310	250	5.1	436	4.55	11.0	-	-	
MW04	3/19/2021	2103294	-	-	-	-	-	-	-	-	-	-	<0.100	1.76	
MW04	6/14/2021	Y106317	8.8	<4.0	20.7	62.3	322	304	<16.0	-	-	-	-	-	Per Approved SAP
MW04	9/14/2021	Y109257	15.1	<10.0	25.4	72.3	308	236	<40.0	-	-	-	-	-	Dilution 10
MW04	12/8/2021	Y112238	33.5	<20	16.6	64.8	206	175	<50	-	-	-	-	-	Dilution 10
MW05	3/16/2021	2103245	9.4	<1.0	<1.0	6.7	2.8	<1.0	<1.0	-	-	-	-	-	
MW05	3/19/2021	2103294	-	-	-	-	-	-	-	803	240	1,810	<0.100	1.35	
MW05	6/14/2021	Y106317	<4.0	<4.0	<4.0	<4.0	<4.0	<4.0	<16.0	-	-	-	-	-	Per Approved SAP
MW05	9/14/2021	Y109257	<1.0	<1.0	<1.0	<1.0	<1.0	<1.0	<4.0	-	-	-	-	-	
MW05	12/8/2021	Y112238	200	<5	<1	<1	<1	<1	<5	-	-	-	-	-	Dilution 5
MW06	3/16/2021	2103245	<1.0	<1.0	<1.0	<1.0	<1.0	<1.0	<1.0	780	168	194	-	-	
MW06	3/19/2021	2103294	-	-	-	-	-	-	-	-	-	-	<0.100	<0.200	
MW06	6/14/2021	Y106317	<1.0	<1.0	<1.0	<1.0	<1.0	<1.0	<4.0	-	-	-	-	-	Per Approved SAP
MW06	9/14/2021	Y109257	<1.0	<1.0	<1.0	<1.0	<1.0	<1.0	<4.0	-	-	-	-	-	
MW06	12/8/2021	Y112238	<2	<5	<1	<1	<1	<1	<5	-	-	-	-	-	
MW07	4/12/2021	Y104191	<1.0	<1.0	<1.0	<1.0	<1.0	<1.0	<4.0	652	<62.5	85.1	<0.02	0.0143 J	
MW07	6/14/2021	Y106317	<1.0	<1.0	<1.0	<1.0	<1.0	<1.0	<4.0	-	-	-	-	-	Per Approved SAP
MW07	9/14/2021	Y109257	<1.0	<1.0	<1.0	<1.0	<1.0	<1.0	<4.0	-	-	-	-	-	
MW07	12/8/2021	Y112238	<2	<5	<1	<1	<1	<1	<5	-	-	-	-	-	
MW08	4/12/2021	Y104191	<4.0	<4.0	154	1020	463	296	<16.0	704	89.9	<62.5	<0.1	0.667	
MW08	6/14/2021	Y106317	<1.0	3.26	142	876	548	331	13.0	-	-	-	-	-	Per Approved SAP
MW08	9/14/2021	Y109257	<4.0	<4.0	162	998	322	232	<16.0	-	-	-	-	-	Dilution 10
MW08	12/8/2021	Y112238	<5	<10	15.9	408	193	162	<25	-	-	-	-	-	Dilution 5
MW09	4/12/2021	Y104191	<1.0	<1.0	<1.0	<1.0	<1.0	<1.0	<4.0	520	<62.5	<62.5	<0.02	0.0115 J	
MW09	6/14/2021	Y106317	<1.0	<1.0	<1.0	<1.0	<1.0	<1.0	<4.0	-	-	-	-	-	Per Approved SAP
MW09	9/14/2021	Y109257	<1.0	<1.0	<1.0	<1.0	<1.0	<1.0	<4.0	-	-	-	-	-	
MW09	12/8/2021	Y112238	<2	<5	<1	<1	<1	<1	<5	-	-	-	-	-	
MW10	9/14/2021	Y109257	<1.0	<1.0	<1.0	<1.0	<1.0	<1.0	<4.0	-	-	-	-	-	
MW10	12/8/2021	Y112238	<2	<5	<1	<1	<1	<1	<5	-	-	-	-	-	
MW11	9/14/2021	Y109257	<1.0	<1.0	<1.0	<1.0	<1.0	<1.0	<4.0	-	-	-	-	-	
MW11	12/8/2021	Y112238	<2	<5	<1	<1	<1	<1	<5	-	-	-	-	-	
MW12	12/8/2021	Y112238	14,300	<100	566	6,940	388	251	<250	-	-	-	-	-	Dilution 200
MW13	12/8/2021	Y112238	690	<5	72.3	52.8	8.56	12.4	<5	-	-	-	-	-	Dilution 10
MW14	12/8/2021	Y112238	<2	<5	1.01	5.43	1.4	0.62	<5	-	-	-	-	-	

Notes:

1). The environmental cleanup standards for groundwater that are applicable to this site are the Colorado Oil and Gas Conservation Commission (COGCC) standards for contaminants in groundwater according to Table 915-1 of the COGCC 900 Series Rule for E&P Waste Management.

2). Standards are taken from the Colorado Department of Public Health and Environment - Water Quality Control Commission, 5 CCR 1002-41, Table A - Groundwater Organic Chemical Standards.

**Bold** values indicate an exceedance of the COGCC groundwater standards for the Site.

µg/L = micrograms per liter.

mg/L = milligrams per liter.

**TABLE 6**  
**SITE SPECIFIC SOIL AND GROUNDWATER SAMPLING AND ANALYSIS PLAN**  
**DCP MIDSTREAM - MEWBOURN GAS PLANT**

<b>Site Specific Constituent of Concern for Soil Analysis</b>	<b>COGCC Protection of Groundwater Soil Screening Level Standards Risk &amp; MCL Based <sup>(1 &amp; 2)</sup></b>
Benzene (mg/kg)	0.0026 (M)
Toluene (mg/kg)	0.69 (M)
Ethylbenzene (mg/kg)	0.78 (M)
Total Xylenes (mg/kg)	9.9 (M)
1,2,4 Trimethylbenzene (mg/kg)	0.0081 (R)
TPH (mg/kg)	500
Benz(a)anthracene (mg/kg)	0.011 (R)
Fluorene (mg/kg)	0.54 (R)
1-methylnaphthalene (mg/kg)	0.006 (R)
2-methylnaphthalene (mg/kg)	0.019 (R)
Naphthalene (mg/kg)	0.0038 (R)
<b>Site Specific Constituent of Concern for Groundwater Analysis</b>	<b>COGCC Table 915-1 Groundwater Standards (µg/L)<sup>(4)</sup></b>
Benzene (µg/l)	5
Toluene (µg/l)	560
Ethylbenzene (µg/l)	700
Total Xylenes (µg/l)	1400
1,2,4-Trimethylbenzene (µg/l)	67
1,3,5-Trimethylbenzene (µg/l)	67
Naphthalene (µg/l)	140

1). Standards for Soil are referenced from the 2 CCR 404-1, Table 915-1, effective January 15, 2021.

2). Standards for Soil are referenced from the 2 CCR 404-1, Table 915-1, effective January 15, 2021. The letter “(R)” following a protection of Groundwater soil screening level indicates the concentration is derived from a risk-based approach. The letter “(M)” following a protection of Groundwater soil screening level indicates the concentration is derived from the drinking water MCL.

3). EC, SAR, pH, and boron will be analyzed from soil samples collected in the root bearing zone subsequent to invasive remediation activities and prior to reclamation planning.

4). The environmental cleanup standards for groundwater that are applicable to this site are the Colorado Oil and Gas Conservation Commission (COGCC) standards for contaminants in groundwater according to Table 915-1 of the COGCC 900 Series Rule for E&P Waste Management.

TPH - Total volatile (C<sub>6</sub> - C<sub>10</sub>) and extractable (C<sub>10</sub> - C<sub>36</sub>) hydrocarbons

EC - Electrical Conductivity

SAR - Sodium adsorption ratio

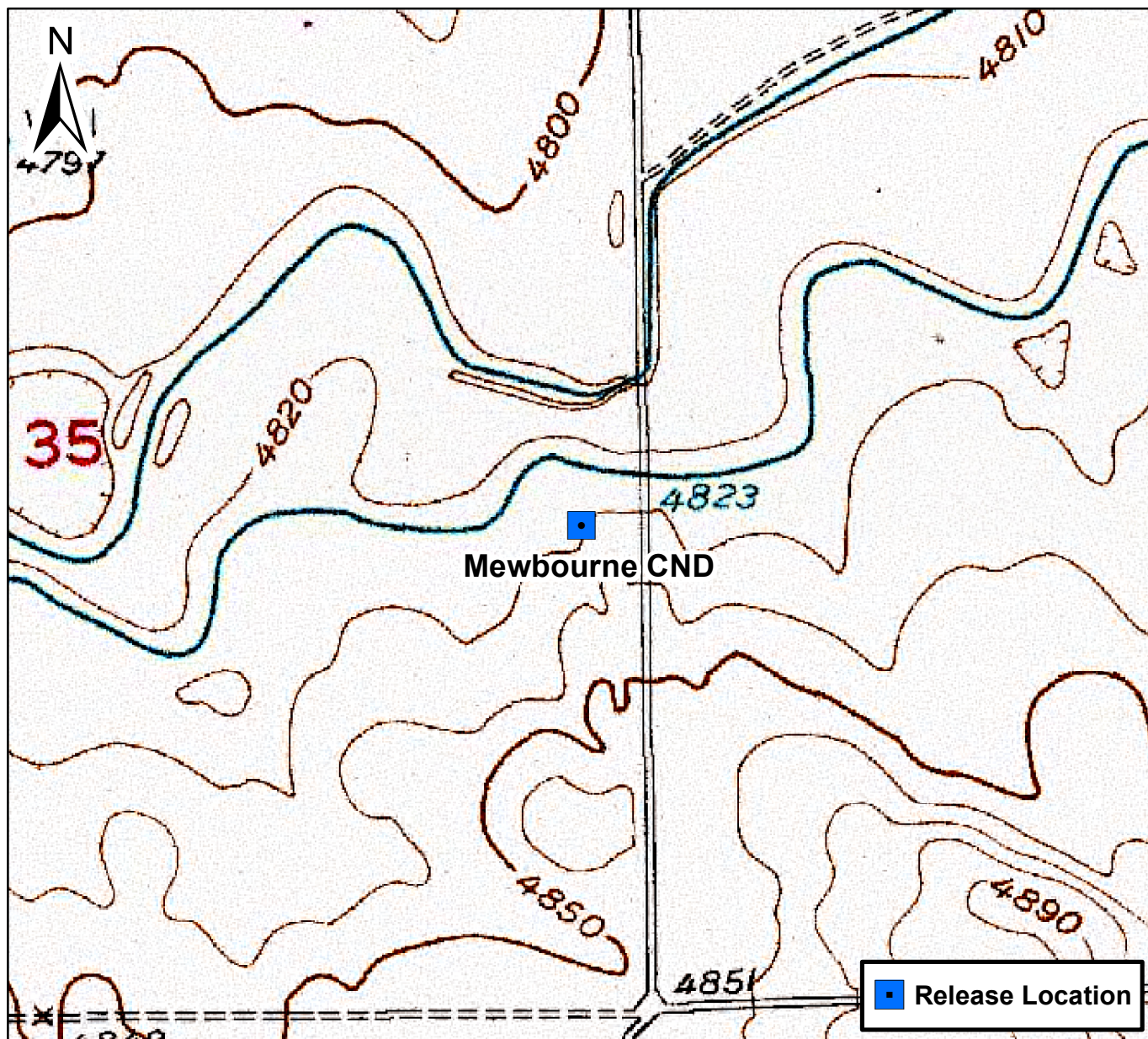
mg/kg= Milligrams per kilogram.

mmhos/cm - millimhos per centimeter

SU - Standard units

mg/l - Milligrams per liter





0 750 1,500 Feet

## Figure 1

Site Location Map  
Mewbourn CND  
NESE S35 T4N R66W  
Weld County, Colorado







DATE:  
January 2022

DESIGNED BY:  
B. Humphrey

DRAWN BY:  
L. Reed



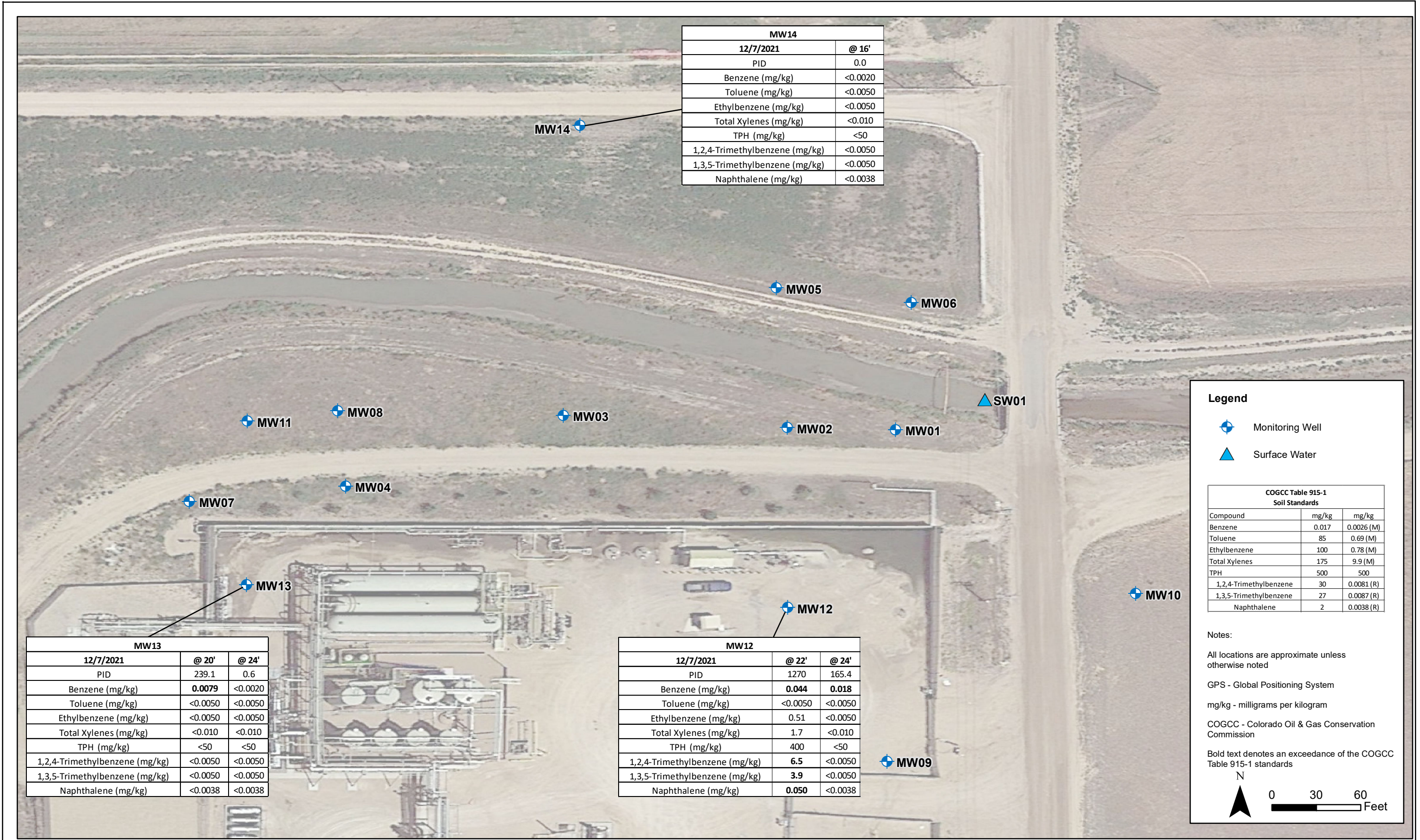
Tasman Geosciences, Inc.  
6855 W. 119th Ave  
Broomfield, CO 80020

**DCP Midstream – DJ Basin  
Mewbourn CND**  
NESE, Section 35, Township 4 North, Range 66 West  
Weld County, Colorado

Site Overview Map

Figure  
2





DATE:  
January 28, 2022

DESIGNED BY:  
B. Humphrey

DRAWN BY:  
L. Reed

 **TASMAN**  
GEOSCIENCES

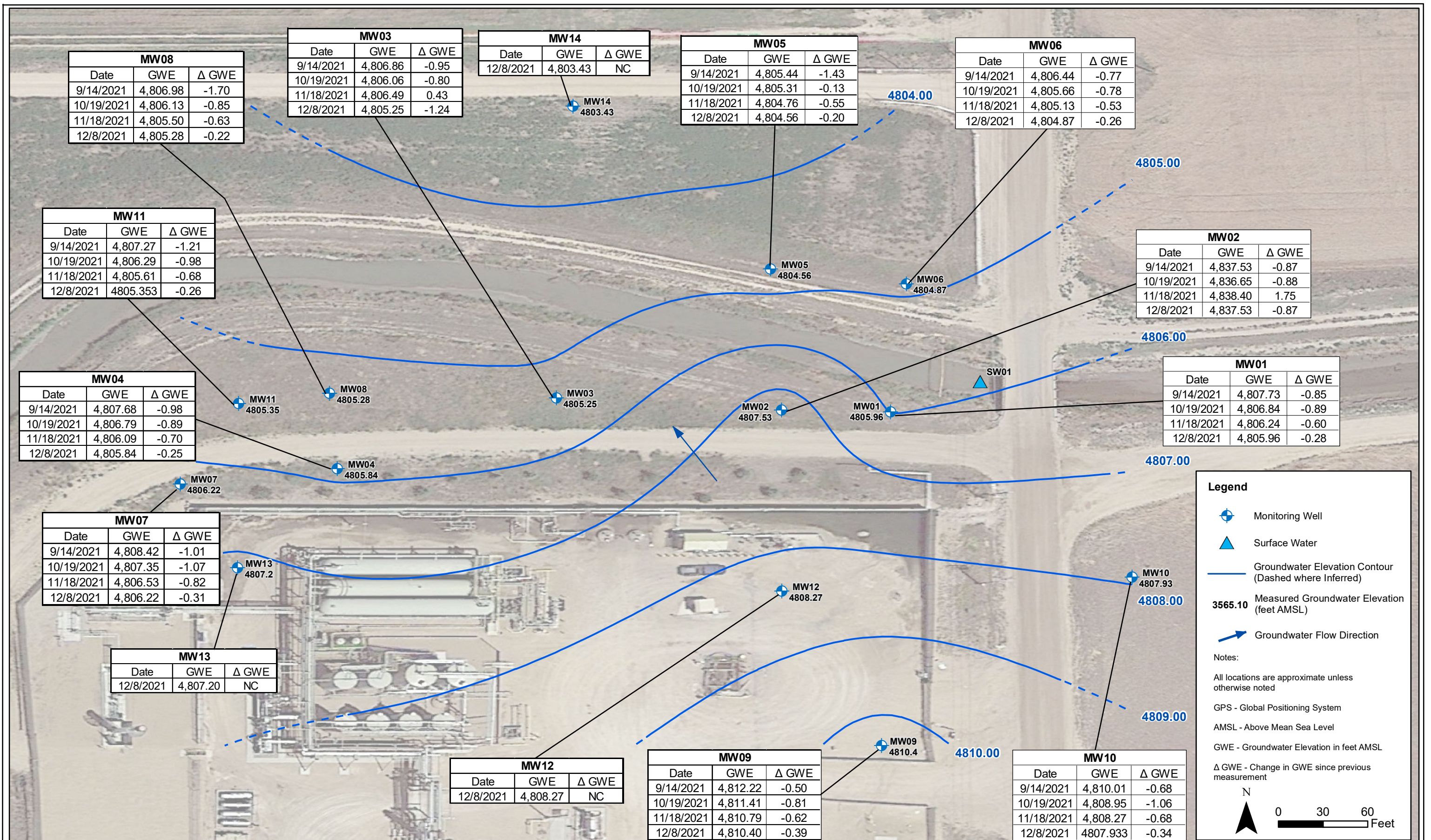
Tasman Geosciences, Inc.  
6855 W. 119th Ave  
Broomfield, CO 80020

**DCP Midstream – DJ Basin  
Mewbourn CND**  
NESE, Section 35, Township 4 North, Range 66 West  
Weld County, Colorado

Soil Analytical  
Results Map  
(December 7, 2021)

Figure  
3





DATE:  
January 28, 2022

DESIGNED BY:  
B. Humphrey

DRAWN BY:  
L. Reed

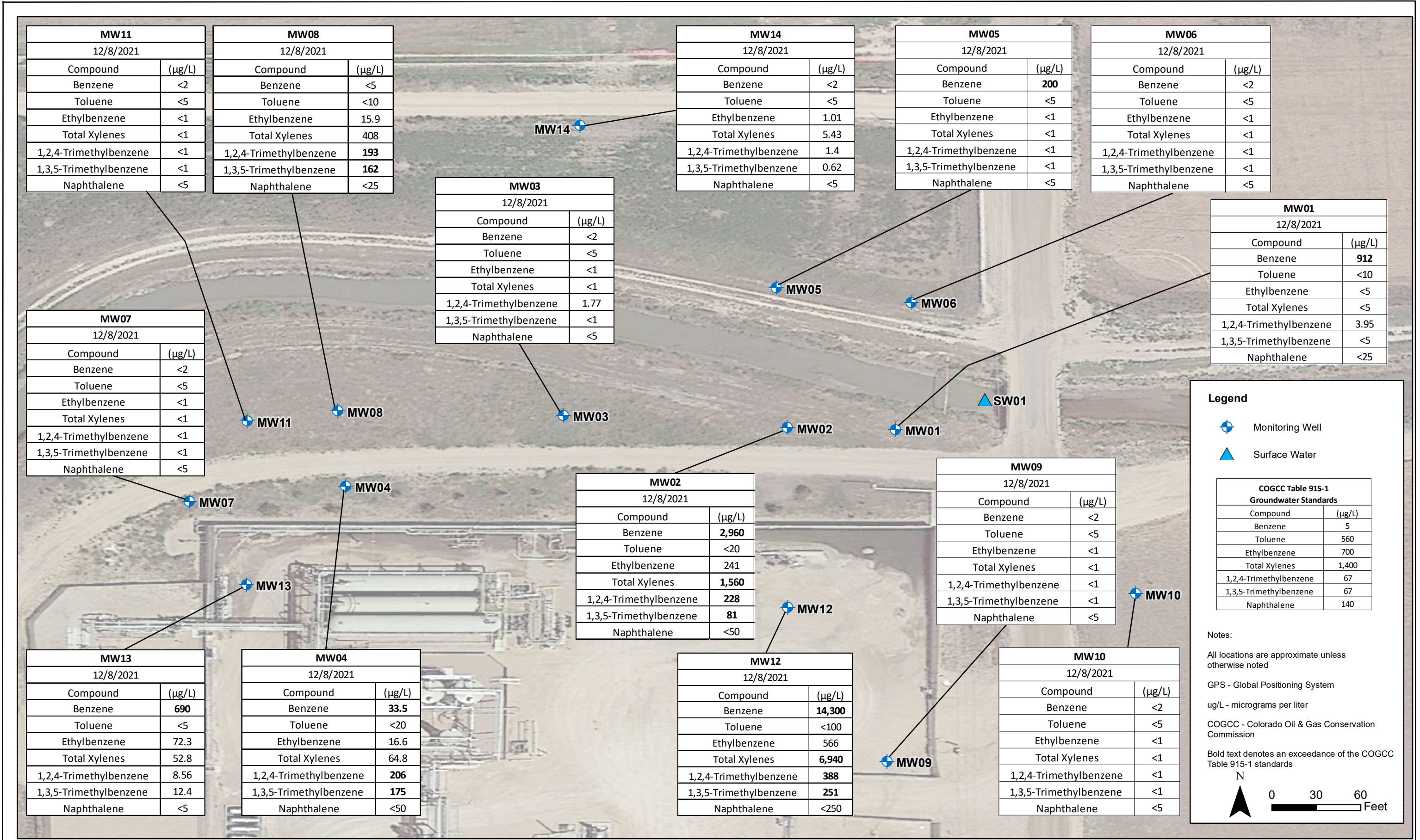


**DCP Midstream – DJ Basin  
Mewbourn CND**  
NESE, Section 35, Township 4 North, Range 66 West  
Weld County, Colorado

Groundwater Elevation  
Contour Map  
(December 8, 2021)

Figure  
4





DATE:  
January 28, 2022

DESIGNED BY:  
B. Humphrey

DRAWN BY:  
L. Reed



Tasman Geosciences, Inc.  
6855 W. 119th Ave  
Broomfield, CO 80020


**DCP Midstream – DJ Basin  
Mewbourn CND**  
NESE, Section 35, Township 4 North, Range 66 West  
Weld County, Colorado

Groundwater Analytical  
Results Map  
(December 8, 2021)

Figure  
5





DATE: January 2022	 <b>Tasman Geosciences, Inc.</b> 6855 W. 119th Ave Broomfield, CO 80020	<b>DCP Midstream – DJ Basin Mewbourn CND</b> NESE, Section 35, Township 4 North, Range 66 West Weld County, Colorado	Proposed Monitoring Well Location	<b>Figure 6</b>
DESIGNED BY: B. Humphrey				
DRAWN BY: L. Reed				





December 22, 2021

Tasman Geosciences

Jeb Watts

6855 West 119th Avenue

Broomfield CO 80020

**Project Name - DCP - Mewbourne**

**Project Number - [none]**

Attached are your analytical results for DCP - Mewbourne received by Origins Laboratory, Inc. December 08, 2021. This project is associated with Origins project number Y112238-01.

The analytical results in the following report were analyzed under the guidelines of EPA Methods. These methods are identified as follows; "SW" are defined in SW-846, "EPA" are defined in 40CFR part 136 and "SM" are defined in the most current revision of Standard Methods For the Examination of Water and Wastewater.

The analytical results apply specifically to the samples and analyses specified per the attached Chain of Custody. As such, this report shall not be reproduced except in full, without the written approval of Origin's laboratory.

Unless otherwise noted, the analytical results for all soil samples are reported on a wet weight basis. All analytical analyses were performed under NELAP guidelines unless noted by a data qualifier.

Any holding time exceedances, deviations from the method specifications or deviations from Origins Laboratory's Standard Operating Procedures are outlined in the case narrative.

Thank you for selecting Origins for your analytical needs. Please contact us with any questions concerning this report, or if we can help with anything at all.

Origins Laboratory, Inc.  
303.433.1322  
o-squad@oelabinc.com



1725 Elk Place, Denver, CO 80211 | Phone: 303.433.1322 | Fax: 303.265.9645

Tasman Geosciences  
6855 West 119th Avenue  
Broomfield CO 80020

Jeb Watts  
Project Number: [none]  
Project: DCP - Mewbourne

### CROSS REFERENCE REPORT

Sample ID	Laboratory ID	Matrix	Date Sampled	Date Received
MW01	Y112238-01	Water	December 8, 2021 13:13	12/08/2021 17:10
MW02	Y112238-02	Water	December 8, 2021 13:01	12/08/2021 17:10
MW03	Y112238-03	Water	December 8, 2021 12:36	12/08/2021 17:10
MW04	Y112238-04	Water	December 8, 2021 12:05	12/08/2021 17:10
MW05	Y112238-05	Water	December 8, 2021 14:01	12/08/2021 17:10
MW06	Y112238-06	Water	December 8, 2021 13:48	12/08/2021 17:10
MW07	Y112238-07	Water	December 8, 2021 11:40	12/08/2021 17:10
MW08	Y112238-08	Water	December 8, 2021 12:23	12/08/2021 17:10
MW09	Y112238-09	Water	December 8, 2021 14:31	12/08/2021 17:10
MW10	Y112238-10	Water	December 8, 2021 13:34	12/08/2021 17:10
MW11	Y112238-11	Water	December 8, 2021 11:52	12/08/2021 17:10
MW12	Y112238-12	Water	December 8, 2021 14:43	12/08/2021 17:10
MW13	Y112238-13	Water	December 8, 2021 14:54	12/08/2021 17:10
MW14	Y112238-14	Water	December 8, 2021 14:13	12/08/2021 17:10

Origins Laboratory, Inc.



*The results in this report apply to the samples analyzed in accordance with the chain of custody document. This analytical report must be reproduced in its entirety.*

---

Tasman Geosciences

6855 West 119th Avenue

Broomfield CO 80020

Jeb Watts

Project Number: [none]

Project: DCP - Mewbourne

---

Origins Laboratory, Inc.



*The results in this report apply to the samples analyzed in accordance with the chain of custody document. This analytical report must be reproduced in its entirety.*

---

Jen Pellegrini, Project Manager

Tasman Geosciences  
6855 West 119th Avenue  
Broomfield CO 80020

Jeb Watts  
Project Number: [none]  
Project: DCP - Mewbourne

ORIGINS  
LABORATORY, INC

www.originslaboratory.com

Y112238 page 1 of 2

Client: DCP/Tasman  
Address: 6855 W 119 Ave  
Broomfield, CO 80020  
Telephone Number: 303-467-1228  
Project Manager: Jeb Watts / Steve Wenzel  
Project Name: Mewbourne  
Project Number:  
Samples Collected By: Brian Gabel

Email Address: jwatts@tasman-geo.com / swenzel@tasman-geo.com  
bga@originslaboratory.com / bga@tasman-geo.com

1725 Elk Place | Denver, CO 80211 | Phone: 303.433.1322 | Fax: 303.265.9645

Sample ID Description	Date Sampled	Time Sampled	# of Containers	Preservative				Matrix			Analysis				Sample Instructions				
				Unpreserved	HCl	HNO <sub>3</sub>	Other	Groundwater	Soil	As Summa	Other	STEX	Mapleleaf	1341SS		TMB			
MW1	12/8/21	1313	3	X				X					X						
MW2		1301	1																
MW3		1236																	
MW4		1205																	
MW5		1401																	
MW6		1348																	
MW7		1140																	
MW8		1223																	
MW9		1431																	
MW10		1334																	
Relinquished By: <i>[Signature]</i>	Date: 12/8/21	Time: 17:10	Received By: <i>[Signature]</i>	Date: 12/8/21	Time: 17:10	Turnaround Time: Same Day <input type="checkbox"/> 24 Hr <input type="checkbox"/> 48 Hr <input type="checkbox"/> 72 Hr <input checked="" type="checkbox"/> Standard													

Date Results Needed

Temp Received- 3.3

Origins Laboratory, Inc.

*Jefe Pellegrini*

The results in this report apply to the samples analyzed in accordance with the chain of custody document. This analytical report must be reproduced in its entirety.

Jen Pellegrini, Project Manager

Tasman Geosciences  
6855 West 119th Avenue  
Broomfield CO 80020

Jeb Watts  
Project Number: [none]  
Project: DCP - Mewbourne

**ORIGINS**  
LABORATORY, INC

www.originslaboratory.com

752211h

page 2 of 3

Client: DCP/Tasman  
Address: 6855 W 119th Ave  
Broomfield, CO 80020  
Telephone Number: 303-487-1228  
Email Address: jwatts@tasman-geo.com / jwatts@origins-lab.com  
Project Manager: Jeb Watts / Steve Westlake  
Project Name: Mewbourne  
Project Number:  
Samples Collected By: Brian Gabel

Sample ID Description	Date Sampled	Time Sampled	# of Containers	Preservative				Matrix			Analysis	Sample Instructions
				Unpreserved	HCl	HNO <sub>3</sub>	Other	Groundwater	Soil	Air Summa Canister #		
MW11	12/8/21	1152	3	X				X			B7 EX 134,135 TMB	1
MW12		1443	1									2
MW13		1454	1									3
MW14		1413	1									4
												5
												6
												7
												8
												9
												10

Relinquished By: [Signature] Date: 12/8/21 Time: 1710  
Relinquished By: [Signature] Date: 12/8/21 Time: 1710

Received By: [Signature] Date: 12/8/21 Time: 1710  
Received By: [Signature] Date: 12/8/21 Time: 1710

Turnaround Time: Same Day ☐ 24 Hr ☐ 48 Hr ☐ 72 Hr ☒ Standard

Date Results Needed

Temp Received: 3.5

Origins Laboratory, Inc.

Jen Pellegrini

The results in this report apply to the samples analyzed in accordance with the chain of custody document. This analytical report must be reproduced in its entirety.



Tasman Geosciences  
6855 West 119th Avenue  
Broomfield CO 80020

Jeb Watts  
Project Number: [none]  
Project: DCP - Mewbourne

Origins Laboratory

F-012207-01-R1  
Effective Date: 01/09/12

Sample Receipt Checklist

Origins Work Order: Y112238 Client: Tasman  
Client Project ID: Mewbourne

Checklist Completed by: JG Shipped Via: HD  
(UPS, FedEx, Hand Delivered, Pick-up, etc.)  
Date/time completed: 12/9/21 Airbill #: N/A

Matrix(s) Received: (Check all that apply): Soil/Solid ☒ Water ☐ Other:         

Cooler Number/Temperature: 1 3.3 °C          °C          °C          °C (Describe)

Thermometer ID: T003

Requirement Description	Yes	No	N/A	Comments (if any)
If samples require cooling, was the temperature between 0°C to ≤ 6°C <sup>(1)</sup> ?	<input checked="" type="checkbox"/>			
Is there ice present (document if blue ice is used)	<input checked="" type="checkbox"/>			
Are custody seals present on cooler? (if so, document in comments if they are signed and dated, broken or intact)		<input checked="" type="checkbox"/>		
Are custody seals present on each sample container? (if so, document in comments if they are signed and dated, broken or intact)		<input checked="" type="checkbox"/>		
Were all samples received intact <sup>(1)</sup> ?	<input checked="" type="checkbox"/>			
Was adequate sample volume provided <sup>(1)</sup> ?	<input checked="" type="checkbox"/>			
Are short holding time analytes or samples with HTs due within 48 hours present <sup>(1)</sup> ?		<input checked="" type="checkbox"/>		
Is a chain-of-custody (COC) present and filled out completely <sup>(1)</sup> ?	<input checked="" type="checkbox"/>			
Does the COC agree with the number and type of sample bottles received <sup>(1)</sup> ?	<input checked="" type="checkbox"/>			
Do the sample IDs on the bottle labels match the COC <sup>(1)</sup> ?	<input checked="" type="checkbox"/>			
Is the COC properly relinquished by the client with date and time recorded <sup>(1)</sup> ?	<input checked="" type="checkbox"/>			
For volatiles in water – is there headspace (> ¼ inch bubble) present? If yes, contact client and note in narrative.		<input checked="" type="checkbox"/>		
Are samples preserved that require preservation and was it checked <sup>(1)</sup> ? (note ID of confirmation instrument used in comments) / (preservation is not confirmed for subcontracted analyses in order to insure sample integrity) (pH < 2 for samples preserved with HNO <sub>3</sub> , HCL, H <sub>2</sub> SO <sub>4</sub> ) / (pH > 10 for samples preserved with NaAsO <sub>2</sub> +NaOH, ZnAc+NaOH)		<input checked="" type="checkbox"/>		
Additional Comments (if any):				

<sup>(1)</sup> If NO, then contact the client before proceeding with analysis and note date/time and person contacted as well as the corrective action to in the additional comments (above) and the case narrative.

Reviewed by (Project Manager) JG Date/Time Reviewed 12/10/21

Origins Laboratory, Inc.

*Jen Pellegrini*

The results in this report apply to the samples analyzed in accordance with the chain of custody document. This analytical report must be reproduced in its entirety.



Tasman Geosciences  
6855 West 119th Avenue  
Broomfield CO 80020

Jeb Watts  
Project Number: [none]  
Project: DCP - Mewbourne

## MW01

12/8/2021 1:13:00PM

Analyte	Result	Reporting Limit	Units	Dilution	Batch	Analyst	Prepared	Analyzed	Notes
---------	--------	-----------------	-------	----------	-------	---------	----------	----------	-------

## Waypoint Analytical, Inc. Y112238-01 (Water)

### BTEX + N + TMBs by 8260B

Benzene	912	10	µg/L	10	L591170	12/20/2021	12/20/2021
---------	-----	----	------	----	---------	------------	------------

### BTEX+N+TMBs by 8260B

1,2,4-Trimethylbenzene	3.95	5	µg/L	5	L590868	12/18/2021	12/18/2021	J
1,3,5-Trimethylbenzene	ND	5	"	"	"	"	"	
Ethylbenzene	ND	5	"	"	"	"	"	
Naphthalene	ND	25	"	"	"	"	"	
Toluene	ND	10	"	"	"	"	"	
Xylene (Total)	ND	5	"	"	"	"	"	

Surrogate: 1,2-Dichloroethane - d4	93.6 %	63-136	"	"	"
Surrogate: 4-Bromofluorobenzene	75.4 %	71-137	"	"	"
Surrogate: Dibromofluoromethane	111 %	70-128	"	"	"
Surrogate: Toluene-d8	86.2 %	70-130	"	"	"

Origins Laboratory, Inc.



The results in this report apply to the samples analyzed in accordance with the chain of custody document. This analytical report must be reproduced in its entirety.

Jen Pellegrini, Project Manager

Tasman Geosciences  
6855 West 119th Avenue  
Broomfield CO 80020

Jeb Watts  
Project Number: [none]  
Project: DCP - Mewbourne

## MW02

12/8/2021 1:01:00PM

Analyte	Result	Reporting Limit	Units	Dilution	Batch	Analyst	Prepared	Analyzed	Notes
---------	--------	-----------------	-------	----------	-------	---------	----------	----------	-------

## Waypoint Analytical, Inc. Y112238-02 (Water)

### BTEX + N + TMBs by 8260B

Benzene	2960	50	µg/L	50	L591170	12/20/2021	12/20/2021
---------	------	----	------	----	---------	------------	------------

### BTEX+N+TMBs by 8260B

1,2,4-Trimethylbenzene	228	10	µg/L	10	L590868	12/18/2021	12/18/2021
1,3,5-Trimethylbenzene	81	10	"	"	"	"	"
Ethylbenzene	241	10	"	"	"	"	"
Naphthalene	ND	50	"	"	"	"	"
Toluene	ND	20	"	"	"	"	"
Xylene (Total)	1560	10	"	"	"	"	"

Surrogate: 1,2-Dichloroethane - d4	98.2 %	63-136	"	"	"
Surrogate: 4-Bromofluorobenzene	77.2 %	71-137	"	"	"
Surrogate: Dibromofluoromethane	107 %	70-128	"	"	"
Surrogate: Toluene-d8	85.6 %	70-130	"	"	"

Origins Laboratory, Inc.



The results in this report apply to the samples analyzed in accordance with the chain of custody document. This analytical report must be reproduced in its entirety.

Jen Pellegrini, Project Manager

Tasman Geosciences  
6855 West 119th Avenue  
Broomfield CO 80020

Jeb Watts  
Project Number: [none]  
Project: DCP - Mewbourne

## MW03

12/8/2021 12:36:00PM

Analyte	Result	Reporting Limit	Units	Dilution	Batch	Analyst	Prepared	Analyzed	Notes
---------	--------	-----------------	-------	----------	-------	---------	----------	----------	-------

## Waypoint Analytical, Inc. Y112238-03 (Water)

### BTEX+N+TMBs by 8260B

1,2,4-Trimethylbenzene	1.77	1	µg/L	1	L590868		12/18/2021	12/18/2021	
1,3,5-Trimethylbenzene	ND	1	"	"	"		"	"	
Benzene	ND	2	"	"	"		"	"	
Ethylbenzene	ND	1	"	"	"		"	"	
Naphthalene	ND	5	"	"	"		"	"	
Toluene	ND	5	"	"	"		"	"	
Xylene (Total)	ND	1	"	"	"		"	"	

Surrogate: 1,2-Dichloroethane - d4	92.8 %	63-136			"		"	"	
Surrogate: 4-Bromofluorobenzene	76.2 %	71-137			"		"	"	
Surrogate: Dibromofluoromethane	108 %	70-128			"		"	"	
Surrogate: Toluene-d8	82.4 %	70-130			"		"	"	

Origins Laboratory, Inc.



The results in this report apply to the samples analyzed in accordance with the chain of custody document. This analytical report must be reproduced in its entirety.

Jen Pellegrini, Project Manager

Tasman Geosciences  
6855 West 119th Avenue  
Broomfield CO 80020

Jeb Watts  
Project Number: [none]  
Project: DCP - Mewbourne

## MW04

12/8/2021 12:05:00PM

Analyte	Result	Reporting Limit	Units	Dilution	Batch	Analyst	Prepared	Analyzed	Notes
---------	--------	-----------------	-------	----------	-------	---------	----------	----------	-------

## Waypoint Analytical, Inc. Y112238-04 (Water)

### BTEX+N+TMBs by 8260B

1,2,4-Trimethylbenzene	206	10	µg/L	10	L590868	12/18/2021	12/18/2021
1,3,5-Trimethylbenzene	175	10	"	"	"	"	"
Benzene	33.5	10	"	"	"	"	"
Ethylbenzene	16.6	10	"	"	"	"	"
Naphthalene	ND	50	"	"	"	"	"
Toluene	ND	20	"	"	"	"	"
Xylene (Total)	64.8	10	"	"	"	"	"

Surrogate: 1,2-Dichloroethane - d4	93.2 %	63-136	"	"	"
Surrogate: 4-Bromofluorobenzene	76.8 %	71-137	"	"	"
Surrogate: Dibromofluoromethane	109 %	70-128	"	"	"
Surrogate: Toluene-d8	85.8 %	70-130	"	"	"

Origins Laboratory, Inc.



The results in this report apply to the samples analyzed in accordance with the chain of custody document. This analytical report must be reproduced in its entirety.

Jen Pellegrini, Project Manager

Tasman Geosciences  
6855 West 119th Avenue  
Broomfield CO 80020

Jeb Watts  
Project Number: [none]  
Project: DCP - Mewbourne

## MW05

12/8/2021 2:01:00PM

Analyte	Result	Reporting Limit	Units	Dilution	Batch	Analyst	Prepared	Analyzed	Notes
---------	--------	-----------------	-------	----------	-------	---------	----------	----------	-------

## Waypoint Analytical, Inc. Y112238-05 (Water)

### BTEX + N + TMBs by 8260B

Benzene	200	5	µg/L	5	L591170	12/20/2021	12/20/2021
---------	-----	---	------	---	---------	------------	------------

### BTEX+N+TMBs by 8260B

1,2,4-Trimethylbenzene	ND	1	µg/L	1	L590868	12/18/2021	12/18/2021
1,3,5-Trimethylbenzene	ND	1	"	"	"	"	"
Ethylbenzene	ND	1	"	"	"	"	"
Naphthalene	ND	5	"	"	"	"	"
Toluene	ND	5	"	"	"	"	"
Xylene (Total)	ND	1	"	"	"	"	"

Surrogate: 1,2-Dichloroethane - d4	94.8 %	63-136	"	"	"
Surrogate: 4-Bromofluorobenzene	75.4 %	71-137	"	"	"
Surrogate: Dibromofluoromethane	108 %	70-128	"	"	"
Surrogate: Toluene-d8	81.8 %	70-130	"	"	"

Origins Laboratory, Inc.



The results in this report apply to the samples analyzed in accordance with the chain of custody document. This analytical report must be reproduced in its entirety.

Jen Pellegrini, Project Manager

Tasman Geosciences  
6855 West 119th Avenue  
Broomfield CO 80020

Jeb Watts  
Project Number: [none]  
Project: DCP - Mewbourne

## MW06

12/8/2021 1:48:00PM

Analyte	Result	Reporting Limit	Units	Dilution	Batch	Analyst	Prepared	Analyzed	Notes
---------	--------	-----------------	-------	----------	-------	---------	----------	----------	-------

## Waypoint Analytical, Inc. Y112238-06 (Water)

### BTEX+N+TMBs by 8260B

1,2,4-Trimethylbenzene	ND	1	µg/L	1	L590868		12/18/2021	12/18/2021	
1,3,5-Trimethylbenzene	ND	1	"	"	"		"	"	
Benzene	ND	2	"	"	"		"	"	
Ethylbenzene	ND	1	"	"	"		"	"	
Naphthalene	ND	5	"	"	"		"	"	
Toluene	ND	5	"	"	"		"	"	
Xylene (Total)	ND	1	"	"	"		"	"	

Surrogate: 1,2-Dichloroethane - d4	97.2 %	63-136			"		"	"	
Surrogate: 4-Bromofluorobenzene	73.2 %	71-137			"		"	"	
Surrogate: Dibromofluoromethane	111 %	70-128			"		"	"	
Surrogate: Toluene-d8	78.2 %	70-130			"		"	"	

Origins Laboratory, Inc.



The results in this report apply to the samples analyzed in accordance with the chain of custody document. This analytical report must be reproduced in its entirety.

Jen Pellegrini, Project Manager

Tasman Geosciences  
6855 West 119th Avenue  
Broomfield CO 80020

Jeb Watts  
Project Number: [none]  
Project: DCP - Mewbourne

## MW07

12/8/2021 11:40:00AM

Analyte	Result	Reporting Limit	Units	Dilution	Batch	Analyst	Prepared	Analyzed	Notes
---------	--------	-----------------	-------	----------	-------	---------	----------	----------	-------

## Waypoint Analytical, Inc. Y112238-07 (Water)

### BTEX+N+TMBs by 8260B

1,2,4-Trimethylbenzene	ND	1	µg/L	1	L590868		12/18/2021	12/18/2021	
1,3,5-Trimethylbenzene	ND	1	"	"	"		"	"	
Benzene	ND	2	"	"	"		"	"	
Ethylbenzene	ND	1	"	"	"		"	"	
Naphthalene	ND	5	"	"	"		"	"	
Toluene	ND	5	"	"	"		"	"	
Xylene (Total)	ND	1	"	"	"		"	"	

Surrogate: 1,2-Dichloroethane - d4	95.8 %	63-136			"		"	"	
Surrogate: 4-Bromofluorobenzene	70.4 %	71-137			"		"	"	*
Surrogate: Dibromofluoromethane	111 %	70-128			"		"	"	
Surrogate: Toluene-d8	80 %	70-130			"		"	"	

Origins Laboratory, Inc.



The results in this report apply to the samples analyzed in accordance with the chain of custody document. This analytical report must be reproduced in its entirety.

Jen Pellegrini, Project Manager

Tasman Geosciences  
6855 West 119th Avenue  
Broomfield CO 80020

Jeb Watts  
Project Number: [none]  
Project: DCP - Mewbourne

## MW08

12/8/2021 12:23:00PM

Analyte	Result	Reporting Limit	Units	Dilution	Batch	Analyst	Prepared	Analyzed	Notes
---------	--------	-----------------	-------	----------	-------	---------	----------	----------	-------

## Waypoint Analytical, Inc. Y112238-08 (Water)

### BTEX+N+TMBs by 8260B

1,2,4-Trimethylbenzene	193	5	µg/L	5	L590868	12/18/2021	12/18/2021
1,3,5-Trimethylbenzene	162	5	"	"	"	"	"
Benzene	ND	5	"	"	"	"	"
Ethylbenzene	15.9	5	"	"	"	"	"
Naphthalene	ND	25	"	"	"	"	"
Toluene	ND	10	"	"	"	"	"
Xylene (Total)	408	5	"	"	"	"	"

Surrogate: 1,2-Dichloroethane - d4	90.8 %	63-136	"	"	"
Surrogate: 4-Bromofluorobenzene	80 %	71-137	"	"	"
Surrogate: Dibromofluoromethane	108 %	70-128	"	"	"
Surrogate: Toluene-d8	87.6 %	70-130	"	"	"

Origins Laboratory, Inc.



The results in this report apply to the samples analyzed in accordance with the chain of custody document. This analytical report must be reproduced in its entirety.

Jen Pellegrini, Project Manager



Tasman Geosciences  
6855 West 119th Avenue  
Broomfield CO 80020

Jeb Watts  
Project Number: [none]  
Project: DCP - Mewbourne

## MW09

12/8/2021 2:31:00PM

Analyte	Result	Reporting Limit	Units	Dilution	Batch	Analyst	Prepared	Analyzed	Notes
---------	--------	-----------------	-------	----------	-------	---------	----------	----------	-------

## Waypoint Analytical, Inc. Y112238-09 (Water)

### BTEX+N+TMBs by 8260B

1,2,4-Trimethylbenzene	ND	1	µg/L	1	L590868		12/18/2021	12/18/2021	
1,3,5-Trimethylbenzene	ND	1	"	"	"		"	"	
Benzene	ND	2	"	"	"		"	"	
Ethylbenzene	ND	1	"	"	"		"	"	
Naphthalene	ND	5	"	"	"		"	"	
Toluene	ND	5	"	"	"		"	"	
Xylene (Total)	ND	1	"	"	"		"	"	

Surrogate: 1,2-Dichloroethane - d4	93.4 %	63-136			"	"	"	
Surrogate: 4-Bromofluorobenzene	69.4 %	71-137			"	"	"	*
Surrogate: Dibromofluoromethane	108 %	70-128			"	"	"	
Surrogate: Toluene-d8	78.4 %	70-130			"	"	"	

Origins Laboratory, Inc.



The results in this report apply to the samples analyzed in accordance with the chain of custody document. This analytical report must be reproduced in its entirety.

Jen Pellegrini, Project Manager

Tasman Geosciences  
6855 West 119th Avenue  
Broomfield CO 80020

Jeb Watts  
Project Number: [none]  
Project: DCP - Mewbourne

## MW10

12/8/2021 1:34:00PM

Analyte	Result	Limit	Units	Dilution	Batch	Analyst	Prepared	Analyzed	Notes
---------	--------	-------	-------	----------	-------	---------	----------	----------	-------

## Waypoint Analytical, Inc. Y112238-10 (Water)

### BTEX+N+TMBs by 8260B

1,2,4-Trimethylbenzene	ND	1	µg/L	1	L590868		12/18/2021	12/18/2021	
1,3,5-Trimethylbenzene	ND	1	"	"	"		"	"	
Benzene	ND	2	"	"	"		"	"	
Ethylbenzene	ND	1	"	"	"		"	"	
Naphthalene	ND	5	"	"	"		"	"	
Toluene	ND	5	"	"	"		"	"	
Xylene (Total)	ND	1	"	"	"		"	"	

Surrogate: 1,2-Dichloroethane - d4	95.6 %	63-136			"		"	"	
Surrogate: 4-Bromofluorobenzene	70.8 %	71-137			"		"	"	*
Surrogate: Dibromofluoromethane	110 %	70-128			"		"	"	
Surrogate: Toluene-d8	79 %	70-130			"		"	"	

Origins Laboratory, Inc.



The results in this report apply to the samples analyzed in accordance with the chain of custody document. This analytical report must be reproduced in its entirety.

Jen Pellegrini, Project Manager

Tasman Geosciences  
6855 West 119th Avenue  
Broomfield CO 80020

Jeb Watts  
Project Number: [none]  
Project: DCP - Mewbourne

## MW11

12/8/2021 11:52:00AM

Analyte	Result	Reporting Limit	Units	Dilution	Batch	Analyst	Prepared	Analyzed	Notes
---------	--------	-----------------	-------	----------	-------	---------	----------	----------	-------

## Waypoint Analytical, Inc. Y112238-11 (Water)

### BTEX+N+TMBs by 8260B

1,2,4-Trimethylbenzene	ND	1	µg/L	1	L590868		12/18/2021	12/18/2021	
1,3,5-Trimethylbenzene	ND	1	"	"	"		"	"	
Benzene	ND	2	"	"	"		"	"	
Ethylbenzene	ND	1	"	"	"		"	"	
Naphthalene	ND	5	"	"	"		"	"	
Toluene	ND	5	"	"	"		"	"	
Xylene (Total)	ND	1	"	"	"		"	"	

Surrogate: 1,2-Dichloroethane - d4	96 %	63-136			"		"	"	
Surrogate: 4-Bromofluorobenzene	70 %	71-137			"		"	"	*
Surrogate: Dibromofluoromethane	109 %	70-128			"		"	"	
Surrogate: Toluene-d8	79 %	70-130			"		"	"	

Origins Laboratory, Inc.



The results in this report apply to the samples analyzed in accordance with the chain of custody document. This analytical report must be reproduced in its entirety.

Jen Pellegrini, Project Manager

Tasman Geosciences  
6855 West 119th Avenue  
Broomfield CO 80020

Jeb Watts  
Project Number: [none]  
Project: DCP - Mewbourne

## MW12

12/8/2021 2:43:00PM

Analyte	Result	Reporting Limit	Units	Dilution	Batch	Analyst	Prepared	Analyzed	Notes
---------	--------	-----------------	-------	----------	-------	---------	----------	----------	-------

## Waypoint Analytical, Inc. Y112238-12 (Water)

### BTEX + N + TMBs by 8260B

Benzene	14300	200	µg/L	200	L591170	12/20/2021	12/20/2021
---------	-------	-----	------	-----	---------	------------	------------

### BTEX+N+TMBs by 8260B

1,2,4-Trimethylbenzene	388	50	µg/L	50	L590868	12/18/2021	12/18/2021
1,3,5-Trimethylbenzene	251	50	"	"	"	"	"
Ethylbenzene	566	50	"	"	"	"	"
Naphthalene	ND	250	"	"	"	"	"
Toluene	ND	100	"	"	"	"	"
Xylene (Total)	6940	50	"	"	"	"	"

Surrogate: 1,2-Dichloroethane - d4	94 %	63-136	"	"	"
Surrogate: 4-Bromofluorobenzene	73.6 %	71-137	"	"	"
Surrogate: Dibromofluoromethane	107 %	70-128	"	"	"
Surrogate: Toluene-d8	83.2 %	70-130	"	"	"

Origins Laboratory, Inc.



The results in this report apply to the samples analyzed in accordance with the chain of custody document. This analytical report must be reproduced in its entirety.

Jen Pellegrini, Project Manager

Tasman Geosciences  
6855 West 119th Avenue  
Broomfield CO 80020

Jeb Watts  
Project Number: [none]  
Project: DCP - Mewbourne

## MW13

12/8/2021 2:54:00PM

Analyte	Result	Reporting Limit	Units	Dilution	Batch	Analyst	Prepared	Analyzed	Notes
---------	--------	-----------------	-------	----------	-------	---------	----------	----------	-------

## Waypoint Analytical, Inc. Y112238-13 (Water)

### BTEX + N + TMBs by 8260B

Benzene	690	10	µg/L	10	L591170	12/20/2021	12/20/2021
---------	-----	----	------	----	---------	------------	------------

### BTEX+N+TMBs by 8260B

1,2,4-Trimethylbenzene	8.56	1	µg/L	1	L590868	12/18/2021	12/18/2021
1,3,5-Trimethylbenzene	12.4	1	"	"	"	"	"
Ethylbenzene	72.3	1	"	"	"	"	"
Naphthalene	ND	5	"	"	"	"	"
Toluene	ND	5	"	"	"	"	"
Xylene (Total)	52.8	1	"	"	"	"	"

Surrogate: 1,2-Dichloroethane - d4	98 %	63-136	"	"	"
Surrogate: 4-Bromofluorobenzene	76.4 %	71-137	"	"	"
Surrogate: Dibromofluoromethane	107 %	70-128	"	"	"
Surrogate: Toluene-d8	83 %	70-130	"	"	"

Origins Laboratory, Inc.



The results in this report apply to the samples analyzed in accordance with the chain of custody document. This analytical report must be reproduced in its entirety.

Jen Pellegrini, Project Manager

Tasman Geosciences  
6855 West 119th Avenue  
Broomfield CO 80020

Jeb Watts  
Project Number: [none]  
Project: DCP - Mewbourne

## MW14

12/8/2021 2:13:00PM

Analyte	Result	Reporting Limit	Units	Dilution	Batch	Analyst	Prepared	Analyzed	Notes
---------	--------	-----------------	-------	----------	-------	---------	----------	----------	-------

## Waypoint Analytical, Inc. Y112238-14 (Water)

### BTEX+N+TMBs by 8260B

1,2,4-Trimethylbenzene	1.4	1	µg/L	1	L590868		12/18/2021	12/18/2021	
1,3,5-Trimethylbenzene	0.62	1	"	"	"		"	"	J
Benzene	ND	2	"	"	"		"	"	
Ethylbenzene	1.01	1	"	"	"		"	"	
Naphthalene	ND	5	"	"	"		"	"	
Toluene	ND	5	"	"	"		"	"	
Xylene (Total)	5.43	1	"	"	"		"	"	

Surrogate: 1,2-Dichloroethane - d4	96 %	63-136			"		"	"	
Surrogate: 4-Bromofluorobenzene	72.2 %	71-137			"		"	"	
Surrogate: Dibromofluoromethane	110 %	70-128			"		"	"	
Surrogate: Toluene-d8	80 %	70-130			"		"	"	

Origins Laboratory, Inc.



The results in this report apply to the samples analyzed in accordance with the chain of custody document. This analytical report must be reproduced in its entirety.

Jen Pellegrini, Project Manager

Tasman Geosciences  
6855 West 119th Avenue  
Broomfield CO 80020

Jeb Watts  
Project Number: [none]  
Project: DCP - Mewbourne

**BTEX + N + TMBs by 8260B - Quality Control**  
**Waypoint Analytical, Inc.**

Analyte	Result	Reporting Limit	Units	Spike Level	Source Result	%REC	%REC Limits	RPD	RPD Limit	Notes
<b>Batch L591170 - 5030B</b>										
<b>LCSD (LCSD-L591170)</b>					Prepared: 12/20/2021 Analyzed: 12/20/2021					
Benzene	101	0.58	µg/L	100	101	70-130	2.2	20		
<b>LCS (LCS-L591170)</b>					Prepared: 12/20/2021 Analyzed: 12/20/2021					
Benzene	98.8	0.58	µg/L	100	98.8	70-130				
<b>LRB (LRB-L591170)</b>					Prepared: 12/20/2021 Analyzed: 12/20/2021					
Benzene	ND	1	µg/L				-			

Origins Laboratory, Inc.



*The results in this report apply to the samples analyzed in accordance with the chain of custody document. This analytical report must be reproduced in its entirety.*

Jen Pellegrini, Project Manager

Tasman Geosciences  
6855 West 119th Avenue  
Broomfield CO 80020

Jeb Watts  
Project Number: [none]  
Project: DCP - Mewbourne

**BTEX+N+TMBs by 8260B - Quality Control**  
**Waypoint Analytical, Inc.**

Analyte	Result	Reporting Limit	Units	Spike Level	Source Result	%REC	%REC Limits	RPD	RPD Limit	Notes
---------	--------	-----------------	-------	-------------	---------------	------	-------------	-----	-----------	-------

**Batch L590868 - 5030B**

MSD (L 99505-MSD-L590868)		Source: Y112238-14			Prepared: 12/18/2021 Analyzed: 12/18/2021					
1,2,4-Trimethylbenzene	87.1	0.53	µg/L	100	1.4	85.7	55-149	0	30	
Toluene	97.5	5	"	100	0.79	97.5	64-145	2.4	30	
Ethylbenzene	97.7	0.56	"	100	1.01	96.6	65-141	1.3	30	
Benzene	115	2	"	100	1.28	114	58-143	4.4	30	
1,3,5-Trimethylbenzene	90.4	0.62	"	100	0.62	90.4	57-150	0.3	30	
Naphthalene	66.3	4.49	"	100	99505	66.3	51-153	5.1	30	
Surrogate: Dibromofluoromethane	107		"	50	55	107	70-128			
Surrogate: Toluene-d8	84		"	50	40	84	70-130			
Surrogate: 4-Bromofluorobenzene	80.8		"	50	36.1	80.8	71-137			
Surrogate: 1,2-Dichloroethane - d4	92.6		"	50	48	92.6	63-136			
MS (L 99505-MS-L590868)		Source: Y112238-14			Prepared: 12/18/2021 Analyzed: 12/18/2021					
Toluene	95.1	5	µg/L	100	0.79	95.1	64-145			
Naphthalene	63	4.49	"	100	99505	63	51-153			
Ethylbenzene	96.4	0.56	"	100	1.01	95.3	65-141			
Benzene	110	2	"	100	1.28	109	58-143			
1,3,5-Trimethylbenzene	90.7	0.62	"	100	0.62	90.7	57-150			
1,2,4-Trimethylbenzene	87.1	0.53	"	100	1.4	85.7	55-149			
Surrogate: Dibromofluoromethane	106		"	50	55	106	70-128			
Surrogate: 4-Bromofluorobenzene	80.2		"	50	36.1	80.2	71-137			
Surrogate: Toluene-d8	84.6		"	50	40	84.6	70-130			
Surrogate: 1,2-Dichloroethane - d4	93.4		"	50	48	93.4	63-136			
LCS (LCS-L590868)		Prepared: 12/18/2021 Analyzed: 12/18/2021								
1,3,5-Trimethylbenzene	97.4	0.62	µg/L	100		97.4	75-125			
Benzene	112	0.58	"	100		112	70-130			
Ethylbenzene	104	0.56	"	100		104	80-120			
Naphthalene	65.4	4.49	"	100		65.4	55-145			

Origins Laboratory, Inc.



The results in this report apply to the samples analyzed in accordance with the chain of custody document. This analytical report must be reproduced in its entirety.



Tasman Geosciences  
6855 West 119th Avenue  
Broomfield CO 80020

Jeb Watts  
Project Number: [none]  
Project: DCP - Mewbourne

**BTEX+N+TMBs by 8260B - Quality Control**  
**Waypoint Analytical, Inc.**

Analyte	Result	Reporting Limit	Units	Spike Level	Source Result	%REC	%REC Limits	RPD	RPD Limit	Notes
---------	--------	-----------------	-------	-------------	---------------	------	-------------	-----	-----------	-------

**Batch L590868 - 5030B**

**LCS (LCS-L590868)**

Prepared: 12/18/2021 Analyzed: 12/18/2021

Toluene	99	0.48	µg/L	100	99	80-120
1,2,4-Trimethylbenzene	93.2	0.53	"	100	93.2	65-135
Surrogate: 4-Bromofluorobenzene	76.8		"	50	76.8	71-137
Surrogate: Dibromofluoromethane	99.2		"	50	99.2	70-128
Surrogate: Toluene-d8	80.2		"	50	80.2	70-130
Surrogate: 1,2-Dichloroethane - d4	86		"	50	86	63-136

**LRB (LRB-L590868)**

Prepared: 12/18/2021 Analyzed: 12/18/2021

1,2,4-Trimethylbenzene	ND	1	µg/L	-		
Toluene	ND	2	"	-		
Naphthalene	ND	5	"	-		
Ethylbenzene	ND	1	"	-		
Benzene	ND	1	"	-		
1,3,5-Trimethylbenzene	ND	1	"	-		
Surrogate: Toluene-d8	81		"	50	81	70-130
Surrogate: Dibromofluoromethane	112		"	50	112	70-128
Surrogate: 4-Bromofluorobenzene	73.4		"	50	73.4	71-137
Surrogate: 1,2-Dichloroethane - d4	96.6		"	50	96.6	63-136

Origins Laboratory, Inc.



The results in this report apply to the samples analyzed in accordance with the chain of custody document. This analytical report must be reproduced in its entirety.

Jen Pellegrini, Project Manager

Tasman Geosciences  
6855 West 119th Avenue  
Broomfield CO 80020

Jeb Watts  
Project Number: [none]  
Project: DCP - Mewbourne

### Notes and Definitions

J Estimated Value. Analyte below reported quantitation limit.

\* QC Failure

ND Analyte NOT DETECTED at or above the reporting limit

RPD Relative Percent Difference

All soil results are reported at a wet weight basis.

Origins Laboratory, Inc.



*The results in this report apply to the samples analyzed in accordance with the chain of custody document. This analytical report must be reproduced in its entirety.*

Jen Pellegrini, Project Manager

# Summit Scientific

---

4653 Table Mountain Drive, Golden, Colorado 80403

303.277.9310

December 21, 2021

Jeb Watts

Tasman Geosciences

6855 W. 119th Ave.

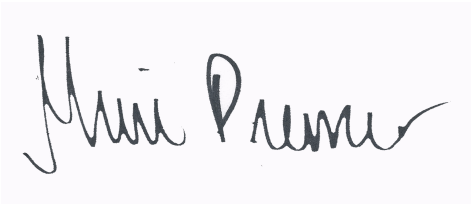
Broomfield, CO 80020

RE: Mewbourn

Work Order #2112138

Enclosed are the results of analyses for samples received by Summit Scientific on 12/07/21 17:30. If you have any questions concerning this report, please feel free to contact me.

Sincerely,

A handwritten signature in black ink, reading "Muri Premier", on a light blue background.

Muri Premier For Paul Shrewsbury  
President



Tasman Geosciences  
6855 W. 119th Ave.  
Broomfield CO, 80020

Project: Mewbourn  
Project Number: [none]  
Project Manager: Jeb Watts

**Reported:**  
12/21/21 11:40

#### ANALYTICAL REPORT FOR SAMPLES

Sample ID	Laboratory ID	Matrix	Date Sampled	Date Received
MW12@22'	2112138-01	Soil	12/07/21 10:30	12/07/21 17:30
MW12@24'	2112138-02	Soil	12/07/21 10:45	12/07/21 17:30
MW13@20'	2112138-03	Soil	12/07/21 12:20	12/07/21 17:30
MW13@24'	2112138-04	Soil	12/07/21 12:35	12/07/21 17:30
MW14@16'	2112138-06	Soil	12/07/21 14:35	12/07/21 17:30

Summit Scientific

*The results in this report apply to the samples analyzed in accordance with the chain of custody document. This analytical report must be reproduced in its entirety.*

## 2112138

741 Corporate Circle Suite I ♦ Golden, Colorado 80401  
303-277-9310 ♦ 303-374-5933 Fax

Page 1 of 1

Project Manager: Jeff Watts / Steve Wauthers  
E-Mail: j.watts@tasman-geo.com / s.wauthers@dcpmidstream.com /  
Project Name: Mewbourn cecile@dcpmidstream.com  
Project Number: \_\_\_\_\_

				Preservative				Matrix			Analyze For:										Special Instructions	
Sample Description	Date Sampled	Time Sampled	Number of Containers	HCl	HNO <sub>3</sub>	None	Other (Specify)	Groundwater	Soil	Air - Canister Serial #	Other (Specify)	Table 915-1 BTEX	Table 915-1 TPH	Table 915-1 VOCs	Table 915-1 SVOCs	Table 915-1 Pesticides	Table 915-1 PCBs	Table 915-1 Phenols	Table 915-1 Fluorides	Table 915-1 Other		Table 915-1 Other
MW12 @ 22'	12/7/21	1030	2			X			X			X	X	X	X	X	X	X	X			
MW12 @ 24'		1045	2			X			X			X	X	X	X	X	X	X	X			
MW13 @ 20'		1220	2			X			X			X	X	X	X	X	X	X	X			
MW13 @ 24'		1235	2			X			X			X	X	X	X	X	X	X	X			
MW14 @ 9'		1420	2			X			X			X	X	X	X	X	X	X	X			
MW14 @ 16'		1435	2			X			X			X	X	X	X	X	X	X	X			
HOLD MW14 @ 9'																						
Notes:																						

S<sub>2</sub>

## Sample Receipt Checklist

S2 Work Order# 2112138Client: DCP/TasmanClient Project ID: NewbourneShipped Via: ☐ H.D./P.U./FedEx/UPS/USPS/Other

Airbill #: \_\_\_\_\_

Matrix (check all that apply):

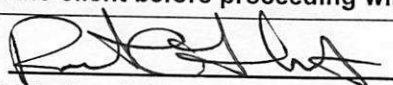
☐ Air☒ Soil/Solid☐ Water☐ Other: \_\_\_\_\_

(Describe)

Temp (°C)	<u>6.7</u>
-----------	------------

Thermometer ID: G86A9201901378

	Yes	No	N/A	Comments (if any)
If samples require cooling, was the temperature at 4°C +/- 2°C <sup>(1)</sup> ? NOTE: If samples are delivered the same day of sampling, this requirement is met if there is evidence that cooling has begun.	<input checked="" type="checkbox"/>	<input type="checkbox"/>	<input type="checkbox"/>	on ICE
Were all samples received intact <sup>(1)</sup> ?	<input checked="" type="checkbox"/>	<input type="checkbox"/>	<input type="checkbox"/>	
Was adequate sample volume provided <sup>(1)</sup> ?	<input checked="" type="checkbox"/>	<input type="checkbox"/>	<input type="checkbox"/>	
If custody seals are present, are they intact <sup>(1)</sup> ?	<input checked="" type="checkbox"/>	<input type="checkbox"/>	<input type="checkbox"/>	
Are samples with holding times due within 48 hours sample due within 48 hours present?	<input type="checkbox"/>	<input checked="" type="checkbox"/>	<input type="checkbox"/>	
Is a chain-of-custody (COC) form present and filled out completely <sup>(1)</sup> ?	<input checked="" type="checkbox"/>	<input type="checkbox"/>	<input type="checkbox"/>	
Does the COC agree with the number and type of sample bottles received <sup>(1)</sup> ?	<input checked="" type="checkbox"/>	<input type="checkbox"/>	<input type="checkbox"/>	
Do the sample IDs on the bottle labels match the COC <sup>(1)</sup> ?	<input checked="" type="checkbox"/>	<input type="checkbox"/>	<input type="checkbox"/>	
Is the COC properly relinquished by the client w/ date and time recorded <sup>(1)</sup> ?	<input checked="" type="checkbox"/>	<input type="checkbox"/>	<input type="checkbox"/>	
For volatiles in water – is there headspace present? If yes, contact client and note in narrative.	<input type="checkbox"/>	<input type="checkbox"/>	<input checked="" type="checkbox"/>	
Are samples preserved that require preservation (excluding cooling) <sup>(1)</sup> ? Note the type of preservative in the Comments column – HCl, H <sub>2</sub> SO <sub>4</sub> , NaOH, HNO <sub>3</sub> , etc.	<input type="checkbox"/>	<input type="checkbox"/>	<input checked="" type="checkbox"/>	
If samples are acid preserved for metals, is the pH ≤ 2 <sup>(1)</sup> ? Record the pH in Comments.	<input type="checkbox"/>	<input type="checkbox"/>	<input checked="" type="checkbox"/>	
If dissolved metals are requested, were samples field filtered?	<input type="checkbox"/>	<input type="checkbox"/>	<input checked="" type="checkbox"/>	
Additional Comments (if any):				

<sup>(1)</sup> If NO, then contact the client before proceeding with analysis and note in case narrative.
  
 Custodian Printed Name or Initials

12.7.21  
 Date/Time



Tasman Geosciences  
6855 W. 119th Ave.  
Broomfield CO, 80020

Project: Mewbourn

Project Number: [none]  
Project Manager: Jeb Watts

**Reported:**  
12/21/21 11:40

**MW12@22'**  
**2112138-01 (Soil)**

**Summit Scientific**

**Volatile Organic Compounds by EPA Method 8260B**

Date Sampled: **12/07/21 10:30**

Analyte	Result	Reporting Limit	Units	Dilution	Batch	Prepared	Analyzed	Method	Notes
<b>Benzene</b>	<b>0.044</b>	0.0020	mg/kg	1	BEL0203	12/09/21	12/10/21	EPA 8260B	
Toluene	ND	0.0050	"	"	"	"	"	"	
<b>Ethylbenzene</b>	<b>0.51</b>	0.0050	"	"	"	"	"	"	
<b>Xylenes (total)</b>	<b>1.7</b>	0.010	"	"	"	"	"	"	
<b>1,2,4-Trimethylbenzene</b>	<b>6.5</b>	0.50	"	100	"	"	"	"	
<b>1,3,5-Trimethylbenzene</b>	<b>3.9</b>	0.50	"	"	"	"	"	"	
<b>Naphthalene</b>	<b>0.050</b>	0.0038	"	1	"	"	"	"	
<b>Gasoline Range Hydrocarbons</b>	<b>210</b>	50	"	100	"	"	"	"	

Date Sampled: **12/07/21 10:30**

Analyte	Result	Reporting Limit	Units	Dilution	Batch	Prepared	Analyzed	Method	Notes
Surrogate: 1,2-Dichloroethane-d4		116 %	23-173		"	"	"	"	
Surrogate: Toluene-d8		105 %	20-170		"	"	"	"	
Surrogate: 4-Bromofluorobenzene		108 %	21-167		"	"	"	"	

**Extractable Petroleum Hydrocarbons by 8015**

Date Sampled: **12/07/21 10:30**

Analyte	Result	Reporting Limit	Units	Dilution	Batch	Prepared	Analyzed	Method	Notes
<b>C10-C28 (DRO)</b>	<b>190</b>	50	mg/kg	1	BEL0202	12/09/21	12/10/21	EPA 8015M	
<b>C28-C36 (ORO)</b>	<b>ND</b>	50	"	"	"	"	"	"	

Date Sampled: **12/07/21 10:30**

Analyte	Result	Reporting Limit	Units	Dilution	Batch	Prepared	Analyzed	Method	Notes
Surrogate: o-Terphenyl		127 %	30-150		"	"	"	"	

**PAH by EPA Method 8270D SIM**

Summit Scientific

The results in this report apply to the samples analyzed in accordance with the chain of custody document. This analytical report must be reproduced in its entirety.



Tasman Geosciences  
6855 W. 119th Ave.  
Broomfield CO, 80020

Project: Mewbourn  
Project Number: [none]  
Project Manager: Jeb Watts

**Reported:**  
12/21/21 11:40

**MW12@22'**  
**2112138-01 (Soil)**

**Summit Scientific**

**PAH by EPA Method 8270D SIM**

Date Sampled: **12/07/21 10:30**

Analyte	Result	Reporting Limit	Units	Dilution	Batch	Prepared	Analyzed	Method	Notes
Benzo (a) anthracene	ND	0.00500	mg/kg	1	BEL0180	12/09/21	12/15/21	EPA 8270D SIM	
<b>Fluorene</b>	<b>0.00979</b>	0.00500	"	"	"	"	"	"	
<b>1-Methylnaphthalene</b>	<b>0.0800</b>	0.00500	"	"	"	"	"	"	
<b>2-Methylnaphthalene</b>	<b>0.169</b>	0.00500	"	"	"	"	"	"	

Date Sampled: **12/07/21 10:30**

Analyte	Result	Reporting Limit	Units	Dilution	Batch	Prepared	Analyzed	Method	Notes
Surrogate: 2-Methylnaphthalene-d10		52.2 %	40-150		"	"	"	"	
Surrogate: Fluoranthene-d10		48.0 %	40-150		"	"	"	"	

Summit Scientific

*The results in this report apply to the samples analyzed in accordance with the chain of custody document. This analytical report must be reproduced in its entirety.*





Tasman Geosciences  
6855 W. 119th Ave.  
Broomfield CO, 80020

Project: Mewbourn  
Project Number: [none]  
Project Manager: Jeb Watts

**Reported:**  
12/21/21 11:40

**MW12@24'**  
**2112138-02 (Soil)**

**Summit Scientific**

**Volatile Organic Compounds by EPA Method 8260B**

Date Sampled: **12/07/21 10:45**

Analyte	Result	Reporting Limit	Units	Dilution	Batch	Prepared	Analyzed	Method	Notes
<b>Benzene</b>	<b>0.018</b>	0.0020	mg/kg	1	BEL0203	12/09/21	12/10/21	EPA 8260B	
Toluene	ND	0.0050	"	"	"	"	"	"	
Ethylbenzene	ND	0.0050	"	"	"	"	"	"	
Xylenes (total)	ND	0.010	"	"	"	"	"	"	
1,2,4-Trimethylbenzene	ND	0.0050	"	"	"	"	"	"	
1,3,5-Trimethylbenzene	ND	0.0050	"	"	"	"	"	"	
Naphthalene	ND	0.0038	"	"	"	"	"	"	
Gasoline Range Hydrocarbons	ND	0.50	"	"	"	"	"	"	

Date Sampled: **12/07/21 10:45**

Analyte	Result	Reporting Limit	Units	Dilution	Batch	Prepared	Analyzed	Method	Notes
Surrogate: 1,2-Dichloroethane-d4		139 %	23-173		"	"	"	"	
Surrogate: Toluene-d8		106 %	20-170		"	"	"	"	
Surrogate: 4-Bromofluorobenzene		107 %	21-167		"	"	"	"	

**Extractable Petroleum Hydrocarbons by 8015**

Date Sampled: **12/07/21 10:45**

Analyte	Result	Reporting Limit	Units	Dilution	Batch	Prepared	Analyzed	Method	Notes
C10-C28 (DRO)	ND	50	mg/kg	1	BEL0202	12/09/21	12/10/21	EPA 8015M	
C28-C36 (ORO)	ND	50	"	"	"	"	"	"	

Date Sampled: **12/07/21 10:45**

Analyte	Result	Reporting Limit	Units	Dilution	Batch	Prepared	Analyzed	Method	Notes
Surrogate: o-Terphenyl		110 %	30-150		"	"	"	"	

**PAH by EPA Method 8270D SIM**

Summit Scientific

The results in this report apply to the samples analyzed in accordance with the chain of custody document. This analytical report must be reproduced in its entirety.



Tasman Geosciences  
6855 W. 119th Ave.  
Broomfield CO, 80020

Project: Mewbourn  
Project Number: [none]  
Project Manager: Jeb Watts

**Reported:**  
12/21/21 11:40

**MW12@24'**  
**2112138-02 (Soil)**

**Summit Scientific**

**PAH by EPA Method 8270D SIM**

Date Sampled: **12/07/21 10:45**

Analyte	Result	Reporting	Units	Dilution	Batch	Prepared	Analyzed	Method	Notes
		Limit							
Benzo (a) anthracene	ND	0.00500	mg/kg	1	BEL0180	12/09/21	12/15/21	EPA 8270D SIM	
Fluorene	ND	0.00500	"	"	"	"	"	"	
1-Methylnaphthalene	ND	0.00500	"	"	"	"	"	"	
2-Methylnaphthalene	ND	0.00500	"	"	"	"	"	"	

Date Sampled: **12/07/21 10:45**

Analyte	Result	Reporting	Units	Dilution	Batch	Prepared	Analyzed	Method	Notes
		Limit							
Surrogate: 2-Methylnaphthalene-d10		56.3 %	40-150		"	"	"	"	
Surrogate: Fluoranthene-d10		55.1 %	40-150		"	"	"	"	

Summit Scientific

*The results in this report apply to the samples analyzed in accordance with the chain of custody document. This analytical report must be reproduced in its entirety.*



Tasman Geosciences  
6855 W. 119th Ave.  
Broomfield CO, 80020

Project: Mewbourn  
Project Number: [none]  
Project Manager: Jeb Watts

**Reported:**  
12/21/21 11:40

**MW13@20'**  
**2112138-03 (Soil)**

**Summit Scientific**

**Volatile Organic Compounds by EPA Method 8260B**

Date Sampled: **12/07/21 12:20**

Analyte	Result	Reporting Limit	Units	Dilution	Batch	Prepared	Analyzed	Method	Notes
<b>Benzene</b>	<b>0.0079</b>	0.0020	mg/kg	1	BEL0203	12/09/21	12/10/21	EPA 8260B	
Toluene	ND	0.0050	"	"	"	"	"	"	
Ethylbenzene	ND	0.0050	"	"	"	"	"	"	
Xylenes (total)	ND	0.010	"	"	"	"	"	"	
1,2,4-Trimethylbenzene	ND	0.0050	"	"	"	"	"	"	
1,3,5-Trimethylbenzene	ND	0.0050	"	"	"	"	"	"	
Naphthalene	ND	0.0038	"	"	"	"	"	"	
Gasoline Range Hydrocarbons	ND	0.50	"	"	"	"	"	"	

Date Sampled: **12/07/21 12:20**

Analyte	Result	Reporting Limit	Units	Dilution	Batch	Prepared	Analyzed	Method	Notes
Surrogate: 1,2-Dichloroethane-d4		114 %	23-173		"	"	"	"	
Surrogate: Toluene-d8		106 %	20-170		"	"	"	"	
Surrogate: 4-Bromofluorobenzene		111 %	21-167		"	"	"	"	

**Extractable Petroleum Hydrocarbons by 8015**

Date Sampled: **12/07/21 12:20**

Analyte	Result	Reporting Limit	Units	Dilution	Batch	Prepared	Analyzed	Method	Notes
C10-C28 (DRO)	ND	50	mg/kg	1	BEL0202	12/09/21	12/10/21	EPA 8015M	
C28-C36 (ORO)	ND	50	"	"	"	"	"	"	

Date Sampled: **12/07/21 12:20**

Analyte	Result	Reporting Limit	Units	Dilution	Batch	Prepared	Analyzed	Method	Notes
Surrogate: o-Terphenyl		98.3 %	30-150		"	"	"	"	

**PAH by EPA Method 8270D SIM**

Summit Scientific

The results in this report apply to the samples analyzed in accordance with the chain of custody document. This analytical report must be reproduced in its entirety.



Tasman Geosciences  
6855 W. 119th Ave.  
Broomfield CO, 80020

Project: Mewbourn  
Project Number: [none]  
Project Manager: Jeb Watts

**Reported:**  
12/21/21 11:40

**MW13@20'**  
**2112138-03 (Soil)**

**Summit Scientific**

**PAH by EPA Method 8270D SIM**

Date Sampled: **12/07/21 12:20**

Analyte	Result	Reporting	Units	Dilution	Batch	Prepared	Analyzed	Method	Notes
		Limit							
Benzo (a) anthracene	ND	0.00500	mg/kg	1	BEL0180	12/09/21	12/15/21	EPA 8270D SIM	
Fluorene	ND	0.00500	"	"	"	"	"	"	
1-Methylnaphthalene	ND	0.00500	"	"	"	"	"	"	
2-Methylnaphthalene	ND	0.00500	"	"	"	"	"	"	

Date Sampled: **12/07/21 12:20**

Analyte	Result	Reporting	Units	Dilution	Batch	Prepared	Analyzed	Method	Notes
		Limit							
Surrogate: 2-Methylnaphthalene-d10		43.1 %	40-150		"	"	"	"	
Surrogate: Fluoranthene-d10		50.5 %	40-150		"	"	"	"	

Summit Scientific

*The results in this report apply to the samples analyzed in accordance with the chain of custody document. This analytical report must be reproduced in its entirety.*



Tasman Geosciences  
6855 W. 119th Ave.  
Broomfield CO, 80020

Project: Mewbourn  
Project Number: [none]  
Project Manager: Jeb Watts

**Reported:**  
12/21/21 11:40

**MW13@24'**  
**2112138-04 (Soil)**

**Summit Scientific**

**Volatile Organic Compounds by EPA Method 8260B**

Date Sampled: **12/07/21 12:35**

Analyte	Result	Reporting	Units	Dilution	Batch	Prepared	Analyzed	Method	Notes
		Limit							
Benzene	ND	0.0020	mg/kg	1	BEL0203	12/09/21	12/10/21	EPA 8260B	
Toluene	ND	0.0050	"	"	"	"	"	"	
Ethylbenzene	ND	0.0050	"	"	"	"	"	"	
Xylenes (total)	ND	0.010	"	"	"	"	"	"	
1,2,4-Trimethylbenzene	ND	0.0050	"	"	"	"	"	"	
1,3,5-Trimethylbenzene	ND	0.0050	"	"	"	"	"	"	
Naphthalene	ND	0.0038	"	"	"	"	"	"	
Gasoline Range Hydrocarbons	ND	0.50	"	"	"	"	"	"	

Date Sampled: **12/07/21 12:35**

Analyte	Result	Reporting	Units	Dilution	Batch	Prepared	Analyzed	Method	Notes
		Limit							
Surrogate: 1,2-Dichloroethane-d4		115 %	23-173		"	"	"	"	
Surrogate: Toluene-d8		110 %	20-170		"	"	"	"	
Surrogate: 4-Bromofluorobenzene		113 %	21-167		"	"	"	"	

**Extractable Petroleum Hydrocarbons by 8015**

Date Sampled: **12/07/21 12:35**

Analyte	Result	Reporting	Units	Dilution	Batch	Prepared	Analyzed	Method	Notes
		Limit							
C10-C28 (DRO)	ND	50	mg/kg	1	BEL0202	12/09/21	12/10/21	EPA 8015M	
C28-C36 (ORO)	ND	50	"	"	"	"	"	"	

Date Sampled: **12/07/21 12:35**

Analyte	Result	Reporting	Units	Dilution	Batch	Prepared	Analyzed	Method	Notes
		Limit							
Surrogate: o-Terphenyl		88.8 %	30-150		"	"	"	"	

**PAH by EPA Method 8270D SIM**

Summit Scientific

The results in this report apply to the samples analyzed in accordance with the chain of custody document. This analytical report must be reproduced in its entirety.



Tasman Geosciences  
6855 W. 119th Ave.  
Broomfield CO, 80020

Project: Mewbourn  
Project Number: [none]  
Project Manager: Jeb Watts

**Reported:**  
12/21/21 11:40

**MW13@24'**  
**2112138-04 (Soil)**

**Summit Scientific**

**PAH by EPA Method 8270D SIM**

Date Sampled: **12/07/21 12:35**

Analyte	Result	Reporting	Units	Dilution	Batch	Prepared	Analyzed	Method	Notes
		Limit							
Benzo (a) anthracene	ND	0.00500	mg/kg	1	BEL0180	12/09/21	12/15/21	EPA 8270D SIM	
Fluorene	ND	0.00500	"	"	"	"	"	"	
1-Methylnaphthalene	ND	0.00500	"	"	"	"	"	"	
2-Methylnaphthalene	ND	0.00500	"	"	"	"	"	"	

Date Sampled: **12/07/21 12:35**

Analyte	Result	Reporting	Units	Dilution	Batch	Prepared	Analyzed	Method	Notes
		Limit							
Surrogate: 2-Methylnaphthalene-d10		55.4 %	40-150		"	"	"	"	
Surrogate: Fluoranthene-d10		51.9 %	40-150		"	"	"	"	

Summit Scientific

*The results in this report apply to the samples analyzed in accordance with the chain of custody document. This analytical report must be reproduced in its entirety.*



Tasman Geosciences  
6855 W. 119th Ave.  
Broomfield CO, 80020

Project: Mewbourn  
Project Number: [none]  
Project Manager: Jeb Watts

**Reported:**  
12/21/21 11:40

**MW14@16'**  
**2112138-06 (Soil)**

**Summit Scientific**

**Volatile Organic Compounds by EPA Method 8260B**

Date Sampled: **12/07/21 14:35**

Analyte	Result	Reporting	Units	Dilution	Batch	Prepared	Analyzed	Method	Notes
		Limit							
Benzene	ND	0.0020	mg/kg	1	BEL0203	12/09/21	12/10/21	EPA 8260B	
Toluene	ND	0.0050	"	"	"	"	"	"	
Ethylbenzene	ND	0.0050	"	"	"	"	"	"	
Xylenes (total)	ND	0.010	"	"	"	"	"	"	
1,2,4-Trimethylbenzene	ND	0.0050	"	"	"	"	"	"	
1,3,5-Trimethylbenzene	ND	0.0050	"	"	"	"	"	"	
Naphthalene	ND	0.0038	"	"	"	"	"	"	
Gasoline Range Hydrocarbons	ND	0.50	"	"	"	"	"	"	

Date Sampled: **12/07/21 14:35**

Analyte	Result	Reporting	Units	Dilution	Batch	Prepared	Analyzed	Method	Notes
		Limit							
Surrogate: 1,2-Dichloroethane-d4		123 %	23-173		"	"	"	"	
Surrogate: Toluene-d8		110 %	20-170		"	"	"	"	
Surrogate: 4-Bromofluorobenzene		111 %	21-167		"	"	"	"	

**Extractable Petroleum Hydrocarbons by 8015**

Date Sampled: **12/07/21 14:35**

Analyte	Result	Reporting	Units	Dilution	Batch	Prepared	Analyzed	Method	Notes
		Limit							
C10-C28 (DRO)	ND	50	mg/kg	1	BEL0202	12/09/21	12/10/21	EPA 8015M	
C28-C36 (ORO)	ND	50	"	"	"	"	"	"	

Date Sampled: **12/07/21 14:35**

Analyte	Result	Reporting	Units	Dilution	Batch	Prepared	Analyzed	Method	Notes
		Limit							
Surrogate: o-Terphenyl		98.4 %	30-150		"	"	"	"	

**PAH by EPA Method 8270D SIM**

Summit Scientific

The results in this report apply to the samples analyzed in accordance with the chain of custody document. This analytical report must be reproduced in its entirety.



Tasman Geosciences  
6855 W. 119th Ave.  
Broomfield CO, 80020

Project: Mewbourn  
Project Number: [none]  
Project Manager: Jeb Watts

**Reported:**  
12/21/21 11:40

**MW14@16'**  
**2112138-06 (Soil)**

**Summit Scientific**

**PAH by EPA Method 8270D SIM**

Date Sampled: **12/07/21 14:35**

Analyte	Result	Reporting	Units	Dilution	Batch	Prepared	Analyzed	Method	Notes
		Limit							
Benzo (a) anthracene	ND	0.00500	mg/kg	1	BEL0180	12/09/21	12/15/21	EPA 8270D SIM	
Fluorene	ND	0.00500	"	"	"	"	"	"	
1-Methylnaphthalene	ND	0.00500	"	"	"	"	"	"	
2-Methylnaphthalene	ND	0.00500	"	"	"	"	"	"	

Date Sampled: **12/07/21 14:35**

Analyte	Result	Reporting	Units	Dilution	Batch	Prepared	Analyzed	Method	Notes
		Limit							
Surrogate: 2-Methylnaphthalene-d10		50.2 %	40-150		"	"	"	"	
Surrogate: Fluoranthene-d10		54.0 %	40-150		"	"	"	"	

Summit Scientific

*The results in this report apply to the samples analyzed in accordance with the chain of custody document. This analytical report must be reproduced in its entirety.*





Tasman Geosciences  
6855 W. 119th Ave.  
Broomfield CO, 80020

Project: Mewbourn  
Project Number: [none]  
Project Manager: Jeb Watts

**Reported:**  
12/21/21 11:40

## Volatile Organic Compounds by EPA Method 8260B - Quality Control

### Summit Scientific

Analyte	Reporting			Spike	Source		%REC		RPD	
	Result	Limit	Units	Level	Result	%REC	Limits	RPD	Limit	Notes

#### Batch BEL0203 - EPA 5030 Soil MS

##### Blank (BEL0203-BLK1)

Prepared: 12/09/21 Analyzed: 12/10/21

Benzene	ND	0.0020	mg/kg							
Toluene	ND	0.0050	"							
Ethylbenzene	ND	0.0050	"							
Xylenes (total)	ND	0.010	"							
1,2,4-Trimethylbenzene	ND	0.0050	"							
1,3,5-Trimethylbenzene	ND	0.0050	"							
Naphthalene	ND	0.0038	"							
Gasoline Range Hydrocarbons	ND	0.50	"							
Surrogate: 1,2-Dichloroethane-d4	0.0492		"	0.0400		123	23-173			
Surrogate: Toluene-d8	0.0446		"	0.0400		112	20-170			
Surrogate: 4-Bromofluorobenzene	0.0428		"	0.0400		107	21-167			

##### LCS (BEL0203-BS1)

Prepared: 12/09/21 Analyzed: 12/10/21

Benzene	0.161	0.0020	mg/kg	0.150		108	70-130			
Toluene	0.150	0.0050	"	0.150		100	70-130			
Ethylbenzene	0.142	0.0050	"	0.150		94.8	70-130			
m,p-Xylene	0.276	0.010	"	0.300		92.0	70-130			
o-Xylene	0.144	0.0050	"	0.150		96.2	70-130			
1,2,4-Trimethylbenzene	0.151	0.0050	"	0.150		101	70-130			
1,3,5-Trimethylbenzene	0.146	0.0050	"	0.150		97.6	70-130			
Naphthalene	0.170	0.0038	"	0.150		114	70-130			
Surrogate: 1,2-Dichloroethane-d4	0.0414		"	0.0400		104	23-173			
Surrogate: Toluene-d8	0.0421		"	0.0400		105	20-170			
Surrogate: 4-Bromofluorobenzene	0.0400		"	0.0400		100	21-167			

##### Matrix Spike (BEL0203-MS1)

Source: 2112140-01

Prepared: 12/09/21 Analyzed: 12/10/21

Benzene	0.145	0.0020	mg/kg	0.150	ND	96.3	70-130			
Toluene	0.136	0.0050	"	0.150	ND	90.5	70-130			
Ethylbenzene	0.129	0.0050	"	0.150	ND	86.2	70-130			
m,p-Xylene	0.251	0.010	"	0.300	ND	83.7	70-130			
o-Xylene	0.131	0.0050	"	0.150	ND	87.1	70-130			
1,2,4-Trimethylbenzene	0.138	0.0050	"	0.150	ND	91.8	70-130			
1,3,5-Trimethylbenzene	0.133	0.0050	"	0.150	ND	88.6	70-130			
Naphthalene	0.141	0.0038	"	0.150	ND	94.1	70-130			
Surrogate: 1,2-Dichloroethane-d4	0.0430		"	0.0400		108	23-173			
Surrogate: Toluene-d8	0.0422		"	0.0400		105	20-170			
Surrogate: 4-Bromofluorobenzene	0.0412		"	0.0400		103	21-167			

Summit Scientific

The results in this report apply to the samples analyzed in accordance with the chain of custody document. This analytical report must be reproduced in its entirety.



Tasman Geosciences  
6855 W. 119th Ave.  
Broomfield CO, 80020

Project: Mewbourn  
Project Number: [none]  
Project Manager: Jeb Watts

**Reported:**  
12/21/21 11:40

**Volatile Organic Compounds by EPA Method 8260B - Quality Control**  
**Summit Scientific**

Analyte	Reporting			Spike	Source		%REC		RPD	
	Result	Limit	Units	Level	Result	%REC	Limits	RPD	Limit	Notes

**Batch BEL0203 - EPA 5030 Soil MS**

Matrix Spike Dup (BEL0203-MSD1)	Source: 2112140-01			Prepared: 12/09/21 Analyzed: 12/10/21						
Benzene	0.150	0.0020	mg/kg	0.150	ND	99.9	70-130	3.61	30	
Toluene	0.145	0.0050	"	0.150	ND	96.9	70-130	6.87	30	
Ethylbenzene	0.136	0.0050	"	0.150	ND	90.7	70-130	5.16	30	
m,p-Xylene	0.264	0.010	"	0.300	ND	88.0	70-130	4.94	30	
o-Xylene	0.138	0.0050	"	0.150	ND	91.8	70-130	5.30	30	
1,2,4-Trimethylbenzene	0.144	0.0050	"	0.150	ND	96.1	70-130	4.64	30	
1,3,5-Trimethylbenzene	0.141	0.0050	"	0.150	ND	94.1	70-130	6.02	30	
Naphthalene	0.156	0.0038	"	0.150	ND	104	70-130	9.88	30	
Surrogate: 1,2-Dichloroethane-d4	0.0413		"	0.0400		103	23-173			
Surrogate: Toluene-d8	0.0421		"	0.0400		105	20-170			
Surrogate: 4-Bromofluorobenzene	0.0402		"	0.0400		101	21-167			

Summit Scientific

*The results in this report apply to the samples analyzed in accordance with the chain of custody document. This analytical report must be reproduced in its entirety.*



Tasman Geosciences  
6855 W. 119th Ave.  
Broomfield CO, 80020

Project: Mewbourn  
Project Number: [none]  
Project Manager: Jeb Watts

**Reported:**  
12/21/21 11:40

**Extractable Petroleum Hydrocarbons by 8015 - Quality Control**  
**Summit Scientific**

Analyte	Reporting			Spike	Source		%REC		RPD	
	Result	Limit	Units	Level	Result	%REC	Limits	RPD	Limit	Notes

**Batch BEL0202 - EPA 3550A**

**Blank (BEL0202-BLK1)**

Prepared: 12/09/21 Analyzed: 12/10/21

C10-C28 (DRO)	ND	50	mg/kg
C28-C36 (ORO)	ND	50	"

**LCS (BEL0202-BS1)**

Prepared: 12/09/21 Analyzed: 12/10/21

C10-C28 (DRO)	502	50	mg/kg	500	100	70-130
---------------	-----	----	-------	-----	-----	--------

**Matrix Spike (BEL0202-MS1)**

Source: 2112118-01

Prepared: 12/09/21 Analyzed: 12/10/21

C10-C28 (DRO)	535	50	mg/kg	500	34.9	100	70-130
---------------	-----	----	-------	-----	------	-----	--------

**Matrix Spike Dup (BEL0202-MSD1)**

Source: 2112118-01

Prepared: 12/09/21 Analyzed: 12/10/21

C10-C28 (DRO)	506	50	mg/kg	500	34.9	94.3	70-130	5.51	20
---------------	-----	----	-------	-----	------	------	--------	------	----

Summit Scientific

*The results in this report apply to the samples analyzed in accordance with the chain of custody document. This analytical report must be reproduced in its entirety.*



Tasman Geosciences  
6855 W. 119th Ave.  
Broomfield CO, 80020

Project: Mewbourn  
Project Number: [none]  
Project Manager: Jeb Watts

**Reported:**  
12/21/21 11:40

## PAH by EPA Method 8270D SIM - Quality Control

### Summit Scientific

Analyte	Reporting			Spike Level	Source		%REC		RPD	
	Result	Limit	Units		Result	%REC	Limits	RPD	Limit	Notes

#### Batch BEL0180 - EPA 5030 Soil MS

##### Blank (BEL0180-BLK1)

Prepared: 12/09/21 Analyzed: 12/15/21

Acenaphthene	ND	0.00500	mg/kg							
Anthracene	ND	0.00500	"							
Benzo (a) anthracene	ND	0.00500	"							
Benzo (a) pyrene	ND	0.00500	"							
Benzo (b) fluoranthene	ND	0.00500	"							
Benzo (k) fluoranthene	ND	0.00500	"							
Chrysene	ND	0.00500	"							
Dibenz (a,h) anthracene	ND	0.00500	"							
Fluoranthene	ND	0.00500	"							
Fluorene	ND	0.00500	"							
Indeno (1,2,3-cd) pyrene	ND	0.00500	"							
Pyrene	ND	0.00500	"							
1-Methylnaphthalene	ND	0.00500	"							
2-Methylnaphthalene	ND	0.00500	"							
Surrogate: 2-Methylnaphthalene-d10	0.0248		"	0.0333		74.3	40-150			
Surrogate: Fluoranthene-d10	0.0276		"	0.0333		82.8	40-150			

##### LCS (BEL0180-BS1)

Prepared: 12/09/21 Analyzed: 12/15/21

Acenaphthene	0.0259	0.00500	mg/kg	0.0333		77.8	31-137			
Anthracene	0.0267	0.00500	"	0.0333		80.0	30-120			
Benzo (a) anthracene	0.0243	0.00500	"	0.0333		72.8	30-120			
Benzo (a) pyrene	0.0242	0.00500	"	0.0333		72.7	30-120			
Benzo (b) fluoranthene	0.0354	0.00500	"	0.0333		106	30-120			
Benzo (k) fluoranthene	0.0313	0.00500	"	0.0333		94.0	30-120			
Chrysene	0.0264	0.00500	"	0.0333		79.2	30-120			
Dibenz (a,h) anthracene	0.0263	0.00500	"	0.0333		78.9	30-120			
Fluoranthene	0.0265	0.00500	"	0.0333		79.5	30-120			
Fluorene	0.0290	0.00500	"	0.0333		87.0	30-120			
Indeno (1,2,3-cd) pyrene	0.0230	0.00500	"	0.0333		69.1	30-120			
Pyrene	0.0277	0.00500	"	0.0333		83.2	35-142			
1-Methylnaphthalene	0.0217	0.00500	"	0.0333		65.2	35-142			
2-Methylnaphthalene	0.0213	0.00500	"	0.0333		63.8	35-142			
Surrogate: 2-Methylnaphthalene-d10	0.0213		"	0.0333		63.8	40-150			
Surrogate: Fluoranthene-d10	0.0260		"	0.0333		77.9	40-150			

Summit Scientific

The results in this report apply to the samples analyzed in accordance with the chain of custody document. This analytical report must be reproduced in its entirety.



Tasman Geosciences  
6855 W. 119th Ave.  
Broomfield CO, 80020

Project: Mewbourn

Project Number: [none]  
Project Manager: Jeb Watts

**Reported:**  
12/21/21 11:40

## PAH by EPA Method 8270D SIM - Quality Control

### Summit Scientific

Analyte	Reporting			Spike Level	Source		%REC		RPD	
	Result	Limit	Units		Result	%REC	Limits	RPD	Limit	Notes

#### Batch BEL0180 - EPA 5030 Soil MS

##### Matrix Spike (BEL0180-MS1)

Source: 2111330-01

Prepared: 12/09/21 Analyzed: 12/15/21

Acenaphthene	0.0214	0.00500	mg/kg	0.0333	ND	64.3	31-137		
Anthracene	0.0209	0.00500	"	0.0333	ND	62.8	30-120		
Benzo (a) anthracene	0.0194	0.00500	"	0.0333	ND	58.1	30-120		
Benzo (a) pyrene	0.0204	0.00500	"	0.0333	ND	61.3	30-120		
Benzo (b) fluoranthene	0.0270	0.00500	"	0.0333	ND	81.1	30-120		
Benzo (k) fluoranthene	0.0347	0.00500	"	0.0333	ND	104	30-120		
Chrysene	0.0216	0.00500	"	0.0333	ND	64.9	30-120		
Dibenz (a,h) anthracene	0.0223	0.00500	"	0.0333	ND	67.0	30-120		
Fluoranthene	0.0218	0.00500	"	0.0333	ND	65.5	30-120		
Fluorene	0.0231	0.00500	"	0.0333	ND	69.3	30-120		
Indeno (1,2,3-cd) pyrene	0.0227	0.00500	"	0.0333	ND	68.0	30-120		
Pyrene	0.0228	0.00500	"	0.0333	ND	68.5	35-142		
1-Methylnaphthalene	0.0184	0.00500	"	0.0333	ND	55.1	15-130		
2-Methylnaphthalene	0.0181	0.00500	"	0.0333	ND	54.3	15-130		
Surrogate: 2-Methylnaphthalene-d10	0.0188		"	0.0333		56.5	40-150		
Surrogate: Fluoranthene-d10	0.0207		"	0.0333		62.0	40-150		

##### Matrix Spike Dup (BEL0180-MSD1)

Source: 2111330-01

Prepared: 12/09/21 Analyzed: 12/15/21

Acenaphthene	0.0231	0.00500	mg/kg	0.0333	ND	69.4	31-137	7.72	30
Anthracene	0.0235	0.00500	"	0.0333	ND	70.4	30-120	11.5	30
Benzo (a) anthracene	0.0223	0.00500	"	0.0333	ND	66.9	30-120	14.1	30
Benzo (a) pyrene	0.0229	0.00500	"	0.0333	ND	68.7	30-120	11.4	30
Benzo (b) fluoranthene	0.0303	0.00500	"	0.0333	ND	90.9	30-120	11.4	30
Benzo (k) fluoranthene	0.0374	0.00500	"	0.0333	ND	112	30-120	7.60	30
Chrysene	0.0243	0.00500	"	0.0333	ND	72.8	30-120	11.5	30
Dibenz (a,h) anthracene	0.0205	0.00500	"	0.0333	ND	61.4	30-120	8.69	30
Fluoranthene	0.0233	0.00500	"	0.0333	ND	69.8	30-120	6.45	30
Fluorene	0.0255	0.00500	"	0.0333	ND	76.4	30-120	9.78	30
Indeno (1,2,3-cd) pyrene	0.0210	0.00500	"	0.0333	ND	62.9	30-120	7.88	30
Pyrene	0.0256	0.00500	"	0.0333	ND	76.7	35-142	11.3	30
1-Methylnaphthalene	0.0184	0.00500	"	0.0333	ND	55.2	15-130	0.279	50
2-Methylnaphthalene	0.0181	0.00500	"	0.0333	ND	54.3	15-130	0.0221	50
Surrogate: 2-Methylnaphthalene-d10	0.0196		"	0.0333		58.7	40-150		
Surrogate: Fluoranthene-d10	0.0224		"	0.0333		67.1	40-150		

Summit Scientific

The results in this report apply to the samples analyzed in accordance with the chain of custody document. This analytical report must be reproduced in its entirety.



Tasman Geosciences  
6855 W. 119th Ave.  
Broomfield CO, 80020

Project: Mewbourn

Project Number: [none]  
Project Manager: Jeb Watts

**Reported:**  
12/21/21 11:40

### Notes and Definitions

DET	Analyte DETECTED
ND	Analyte NOT DETECTED at or above the reporting limit
NR	Not Reported
dry	Sample results reported on a dry weight basis
RPD	Relative Percent Difference



6855 W. 119th Ave.  
Broomfield, Colorado 80020

CLIENT: DCP Midstream

LOGGED BY: B. Gabel

PROJECT MANAGER: J. Watts

DRILLING CONTRACTOR: Site Services Drilling

DRILLING EQUIPMENT: CME 55

DRILL BIT SIZE (INCHES): 8.25

DATE STARTED - COMPLETED: 12/7/21 - 12/7/21

TOTAL WELL DEPTH (FT. BGS): 24

DEPTH TO WATER (FT. BGS): 19.5

MEWBOURN GP

BORING / WELL ID: MW12

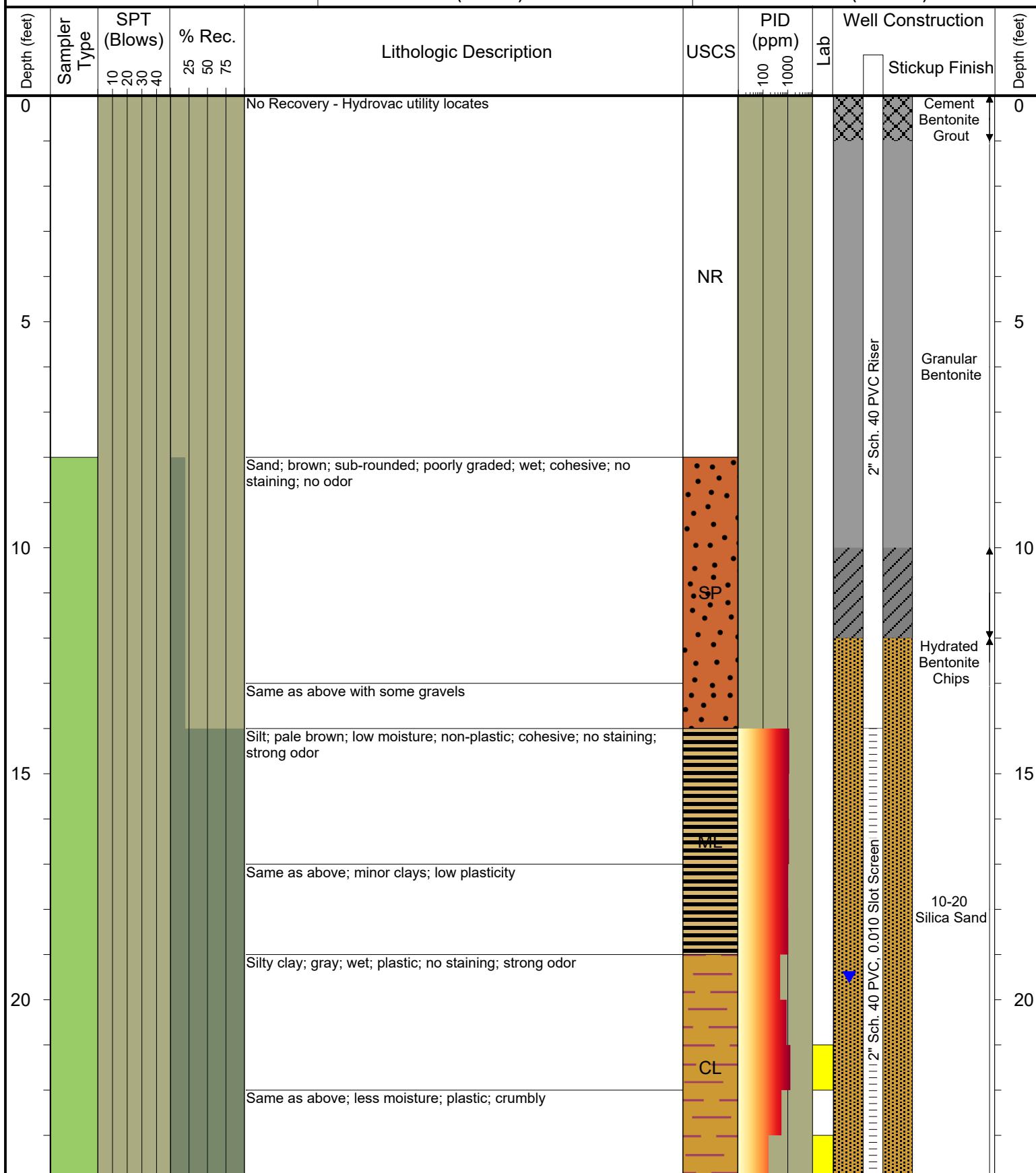
LOCATION: Weld County, CO

LATITUDE:

LONGITUDE:

CASING ELEVATION (FT. AMSL):

GROUND ELEVATION (FT. AMSL):



Drilling / Sample Method:

Solid Stem Auger  
Hollow Stem Auger

Split Spoon Sampler

CME Continuous Sample Tube

Laboratory Sample Types:

Geotechnical Lab

Analytical Chemistry Lab

Geotechnical & Analytical Chemistry Lab





6855 W. 119th Ave.  
Broomfield, Colorado 80020

CLIENT: DCP Midstream

LOGGED BY: B. Gabel

PROJECT MANAGER: J. Watts

DRILLING CONTRACTOR: Site Services Drilling

DRILLING EQUIPMENT: CME 55

DRILL BIT SIZE (INCHES): 8.25

DATE STARTED - COMPLETED: 12/7/21 - 12/7/21

TOTAL WELL DEPTH (FT. BGS): 24

DEPTH TO WATER (FT. BGS): 21

MEWBOURN GP

BORING / WELL ID: MW13

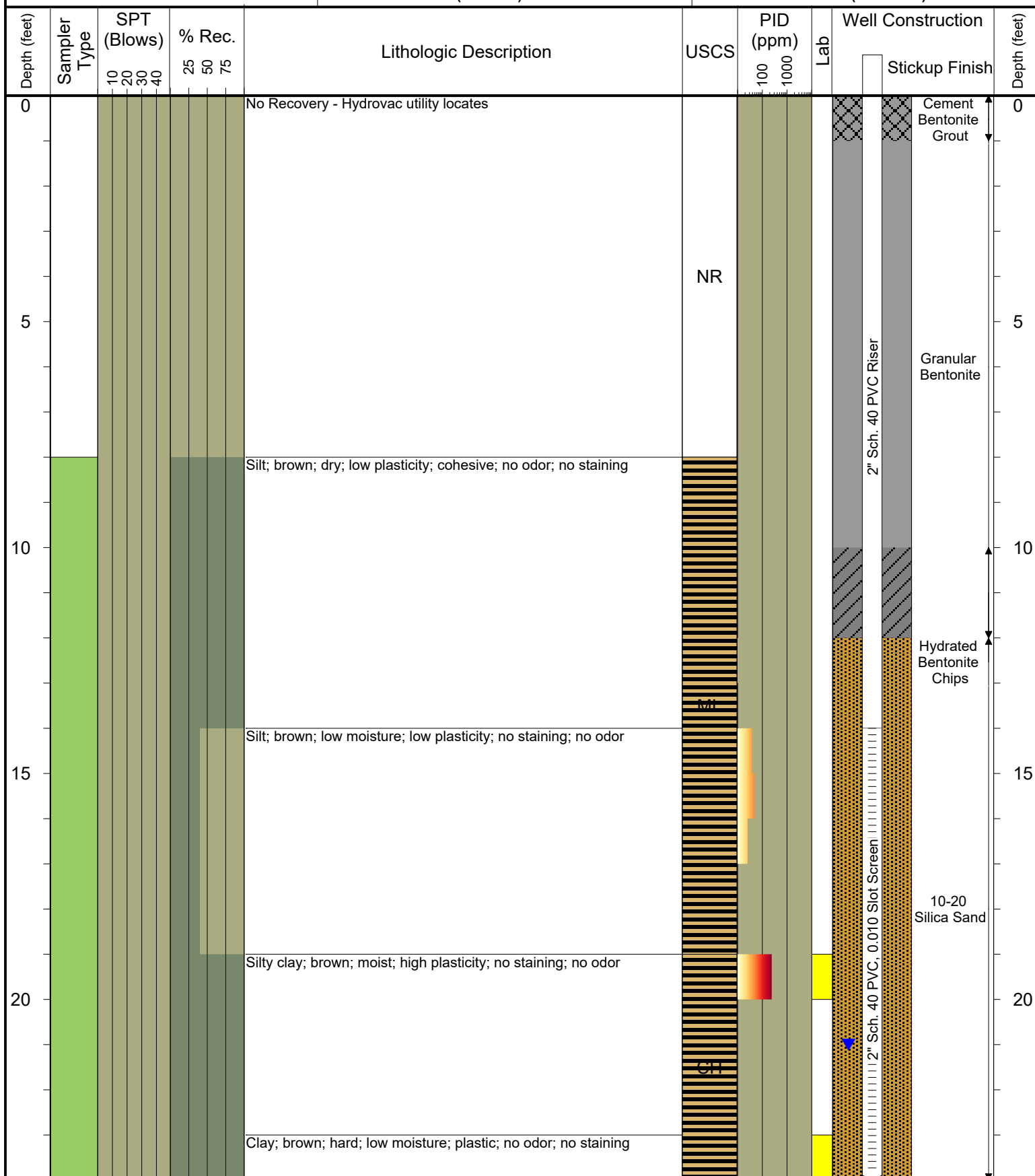
LOCATION: Weld County, CO

LATITUDE:

LONGITUDE:

CASING ELEVATION (FT. AMSL):

GROUND ELEVATION (FT. AMSL):



Drilling / Sample Method:

Solid Stem Auger  
Hollow Stem Auger

Split Spoon Sampler

CME Continuous Sample Tube

Laboratory Sample Types:

Geotechnical Lab

Analytical Chemistry Lab



Geotechnical & Analytical Chemistry Lab



**DEPTH TO WATER (FT. BGS): 9**

**GROUND ELEVATION (FT. AMSL):**



**DCP – MEWBOURN GAS PLANT SITE**  
**FORM 27 SUPPLEMENTAL SUMMARY REPORT**  
**Timeline of Landowner Access Coordination**

- February 9 – March 2, 2021 –
  - Tasman and DCP corresponded multiple times with FRICO representatives and onsite visit on March 4, 2021, to discuss monitoring well installation within the FRICO right of way to conduct investigation activities.
  - DCP right of way was contacted.
- April 1, 2021 –
  - Tasman on behalf of DCP, contacted FRICO for Temporary Access Permit (TAP) to 3 monitoring wells and 48-hour notification.
- May – June 2021 –
  - FRICO and Tasman correspondence regarding well install and monitoring plan(s)
- July 9, 2021 –
  - DCP Right of Way contacted landowners east of the facility to install MW10. Monitoring well was installed on July 14<sup>th</sup>, 2021
  - Tasman on behalf of DC.P, contacted FRICO for monthly access to 3 monitoring wells and 48-hour notification
- August 17, 2021 –
  - Tasman and DCP sign Temporary Access and Construction Permit (TACP) for access to the FRICO property for 1-year (8/18/21 – 8/17/22)
- September 9, 2021 –
  - Tasman on behalf of DCP, contacted FRICO for monthly access to 3 monitoring wells and 48-hour notification.
- October 5, 2021 –
  - DCP Right of Way contacted landowners to the north of the gas plant
    - Immediate lot to the north did not respond
    - Next lot to the North met with ROW to discuss potential access and well installation.
- October 14, 2021-
  - Tasman on behalf of DCP, contacted FRICO for monthly access to 3 monitoring wells and 48-hour notification.
- October 18, 2021-
  - DCP Right of Way obtained a monitoring well easement from Rick and Colleen Margheim, the neighbors to the north, for MW14.
- November 12, 2021 –
  - Tasman on behalf of DCP, contacted FRICO for monthly access to 3 monitoring wells and 48-hour notification.
- December 2, 2021 –
  - Tasman on behalf of DCP, notified COGCC at least 72 hours in advance that monitoring well installation was taking place at Mewbourn GP.
- December 6, 2021 –
  - Tasman on behalf of DCP, contacted FRICO for monthly access to 3 monitoring wells and 48-hour notification.