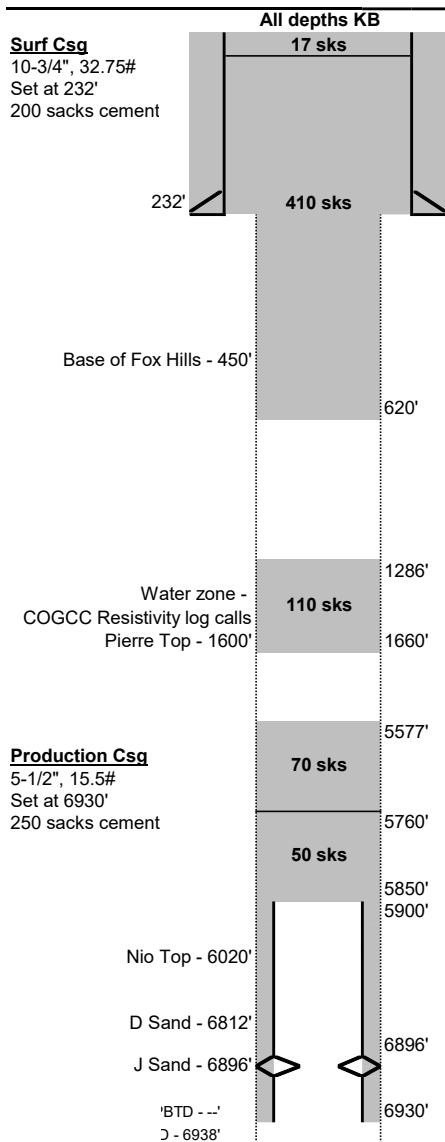




# Final - As Plugged Wellbore Schematic

Well Name: Minnie 1  
Location: 330 FSL & 330 FWL SWSW Sec. 30 T8N R59W  
County: Weld  
API #: 05-132-05487  
Co-ordinates: 40.627027 / -104.029421  
Elevations: GROUND: Unknown  
KB: 4956'  
Depths (KB): PBTD: --  
TD: 6938'

Date Prepared: 1/25/2022  
Date Surface Plug Set: 12/28/2021  
Date Well Cut & Capped: 1/3/2022



Hole Size  
Unknown  
0-232'

**Surface Casing:**  
Unknown Hole Size, assumed to be 15"  
Landed 10-3/4", 32.75# casing at 232'  
Cemented with 200 sks

**Production Casing:**  
Unknown Hole Size, assumed to be 8.75"  
Landed 5-1/2", 15.5# casing at 6930'  
Cemented with 250 sks  
Pulled casing from 5900'

**Open Hole:**  
141'-6904', hole size unknown, likely 8-3/4"

**Tubing:**  
None

**Rods:**  
None

**Perforations:**  
Casing Perforations 6896'-6912' (41 SPF)

Unknown  
232'-6938'

**P&A Plugs:**  
1. 50 sks from 5750'-5850' (existing)  
2. 70 sks Class G (1.15 cuft/sk) from 5577'-5760' (TOC Estimated)  
3. 110 sks Class G (1.15 cuft/sk) from 1286'-1660' (TOC Tagged)  
3. 410 sks Class G (1.15 cuft/sk) from 620' to surface  
4. 17 sks Top Off

**Additional Notes:**

**Initial Potential Test:**

**Formation Tops:**  
Niobrara 6020'  
D Sand 6812'  
J Sand 6896'

PBTD - --'  
TD - 6938'