



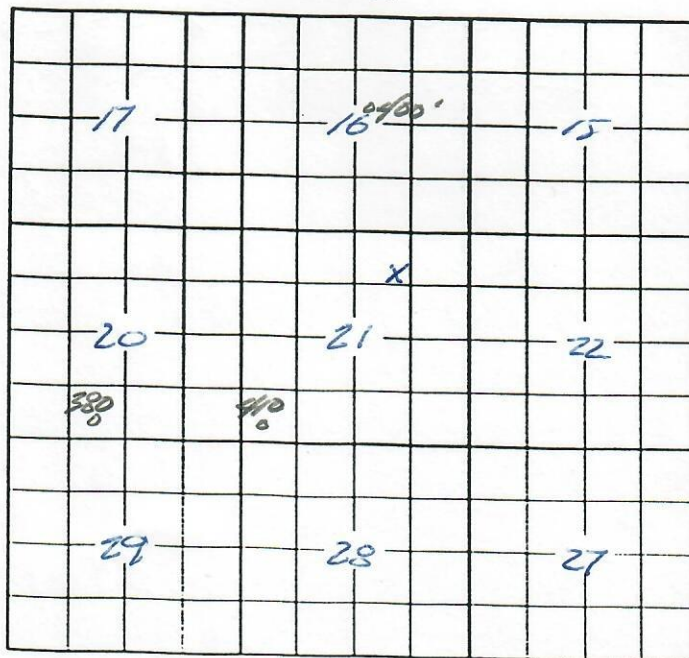
	QTR	QTR	SEC	TWNS	RANGE	PM	NAME	DEPTH	TPERF	BPERF
A	SE	SW	12	090N	0530W	S	LOUDDER E C			
B	NW	NE	13	090N	0530W	S	BUDIN PAUL	200		
C	NW	NE	14	090N	0530W	S	KLOBERDANZ GERALD & SHARON	410		
D	SE	NW	15	090N	0530W	S	HUNT G			
E		C	16	090N	0530W	S	COLO STATE BOARD LAND COMM	400		
F	SE	NW	18	090N	0530W	S	MONTAGUE JOE	430		
G	SW	NW	19	090N	0530W	S	SHELL OIL COMPANY	698		
H	SE	SE	19	090N	0530W	S	SHELL OIL COMPANY	700		
I	NW	SW	19	090N	0530W	S	SHELL OIL COMPANY	700		
J	SE	SW	20	090N	0530W	S	GREEN BROTHERS	380		
K	SW	SW	21	090N	0530W	S	SCHROEDER LESLIE	410		
L	NE	NE	23	090N	0530W	S	BOLLISH DONALD	440		
M	SE	NW	23	090N	0530W	S	SCHROEDER LESLIE	455	355	455
N	SE	SE	23	090N	0530W	S	SKAER ENTERPRISES			
O	SE	NE	24	090N	0530W	S	MAHONEY CHARLES V & NANCY E	324		
P	SW	NW	24	090N	0530W	S	BOLLISH ROBERT	345		
Q	SW	SW	24	090N	0530W	S	WERNER DON C & SMITH DON K	318		
R	SW	SW	24	090N	0530W	S	SLATER TIM & JONI			
S	SW	SW	24	090N	0530W	S	SLATER TIM & JONI			
T	NE	NW	25	090N	0530W	S	SKAER ENTERPRISES	610	490	610

Letter=Choice | F10=Mark 1 | PgUp/PgDn=±20 | UpAr/DnAr =±1 | Esc=Quit

O = WATER WELL

OIL AND GAS WELL/WATER WELL

BASE PLAT



SCHUMBERGER WELL SURVEYING CORPORATION

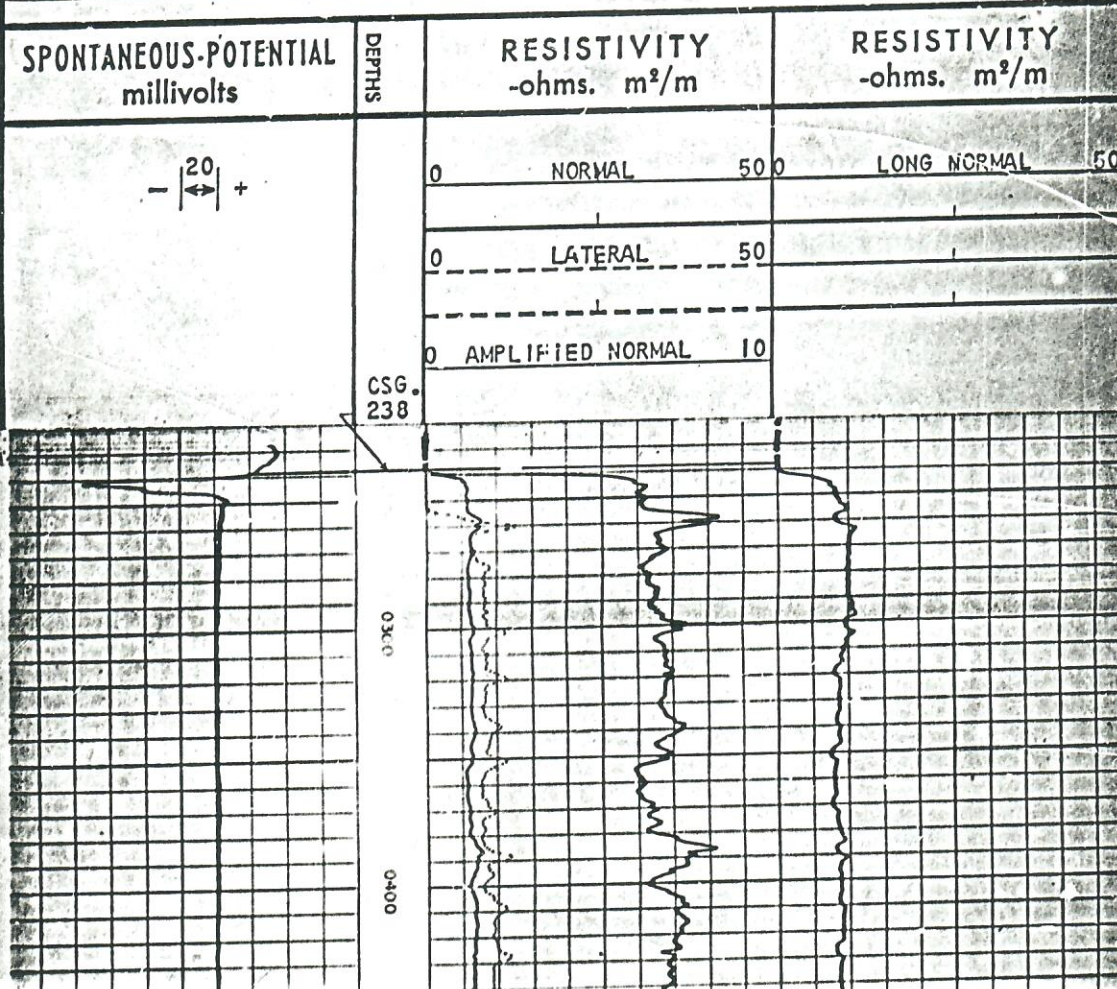


Electrical Log

COUNTY	LOGAN	COMPANY	MCDERMOTT & BARNHART	Location of Well	LOGAN
FIELD or LOCATION	WALKER 21-9N-53W	WELL	W.E. WHITTIER #3	WELL	W.E. WHITTIER #3
WELL	#3	FIELD	WALKER	LOCATION	21-9N-53W
SE NW NE	21-9N-53W	CONSERVATION COMMISSION	Elevation: D.F. 4.45 or G.L. 4.132	FILING No.	
COUNTY	LOGAN	STATE	COLORADO		

RUN No.	ONE
Date	3-26-52
First Reading	5032
Last Reading	238
Feet Measured	4794
Cyl. Sealum.	238
Cyl. Driller	238
Depth Reached	5032
Bottom Driller	5030
Depth Datum	K.B.
Mud Not.	AQUAGEL
" Density	9.5
" Viscosity	15
" Resist.	2.4 @ 58°F
" Res. BHT	1.1 @ 129°F
" pH	@ °F
" Wtr. Loss	CC 30 min.
" Max. Temp. °F	129
" Bit Size	9"
" Spgs. - AM	15"
" AH	64"
" AO	15.8"
Op. Rig Time	5 HOURS
Trck No.	159-51D
Recorded By	SCHOELF
Witness By	MAINOUS

REMARKS. MUD SAMPLE FROM FLOW LINE.
KL/KS - 1.3. PAD WRS-D. CONDITION GOOD.



CSG.
238

0 AMPLIFIED NORMAL 10

