



## Survey Certification

7327 West Barton Road  
Casper, WY 82604  
(307)-472-6621 Fax (307) 472-5439

Operator	HighPoint Resources
Well Name & No.	Critter Creek 15-6302D
API #	05-123-47299
County & State	Weld County, CO
SDI Job #	OP.013671
Rig	Cade 24
Survey Date	11-Oct-2018

I, Seth M. Burstad, having personal knowledge of all the facts, hereby certify that the attached directional survey run from a measured depth of 1493 feet to a measured depth of 17902 feet is true and correct as determined from all available records.

*Seth M. Burstad*

Signature

17-Oct-2018

Date

### Seth M. Burstad

Rockies Region Well Planner  
Scientific Drilling - Rocky Mountain District



Project: Weld County, CO NAD 83  
Site: Critter Creek 15 SW  
Well: Critter Creek 15-6302D  
Wellbore: OH  
Design: OH



WELL DETAILS: Critter Creek 15-6302D

Design: OH (Critter Creek 15-6302D/OH)

Created By: Seth Burstad

GL 5242.3' & KB 16.5' @ 5258.80ft (Cade 24) 5242.30  
Northing 1578441.72 Easting 3297268.27 Latitude 40° 54' 58.471 N Longitude 104° 25' 27.955 W

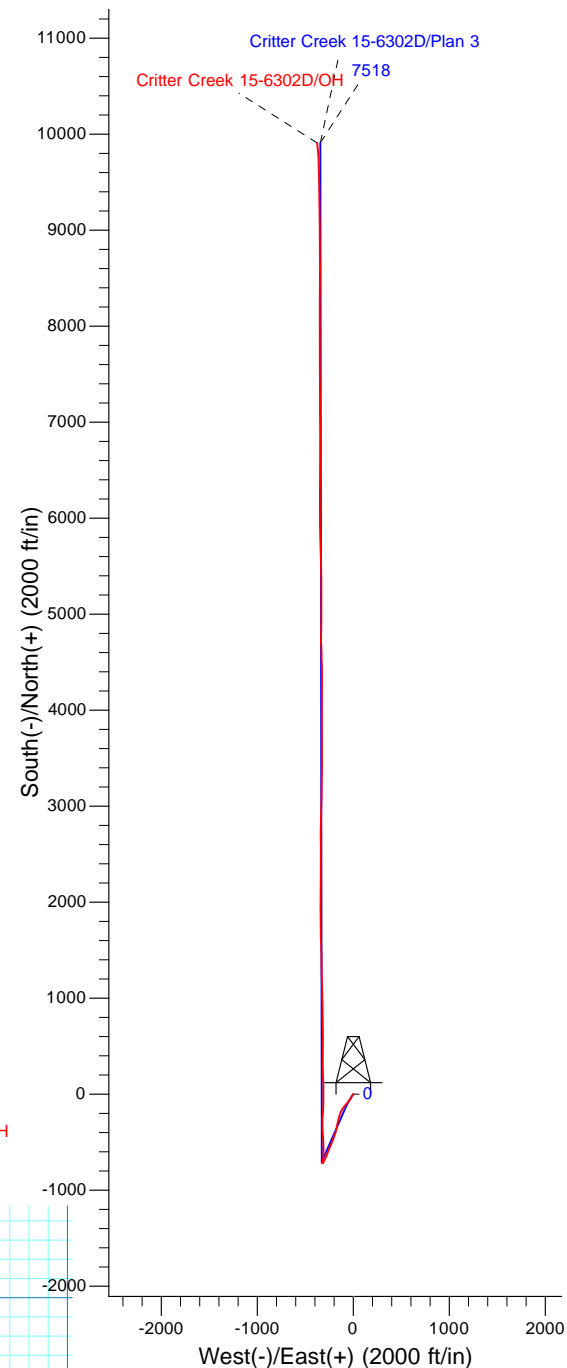
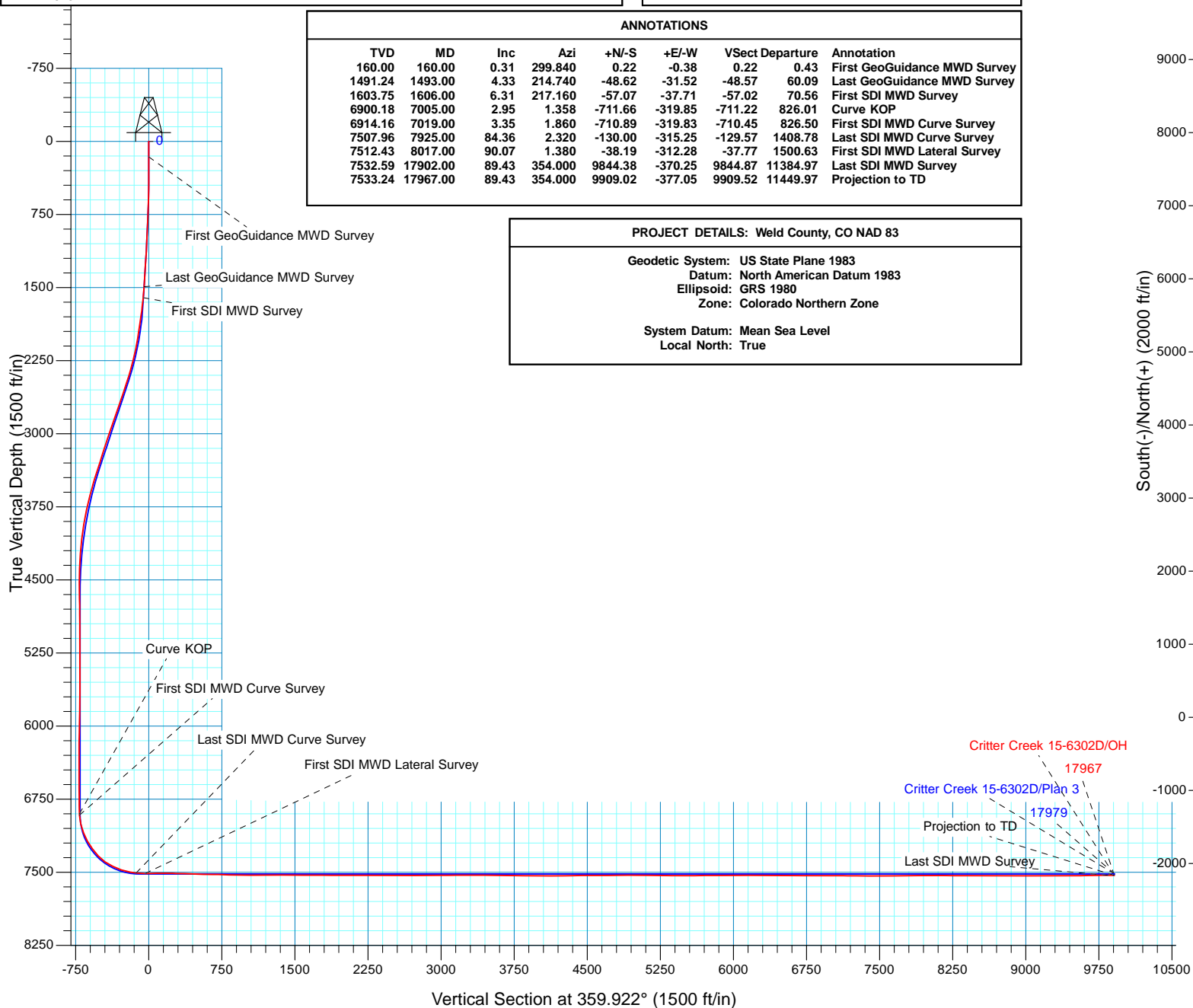
ANNOTATIONS

TVD	MD	Inc	Azi	+N/-S	+E/-W	V	Sect	Departure	Annotation
160.00	160.00	0.31	299.840	0.22	-0.38	0.22	0.43		First GeoGuidance MWD Survey
1491.24	1493.00	4.33	214.740	-48.62	-31.52	-48.57	60.09		Last GeoGuidance MWD Survey
1603.75	1606.00	6.31	217.160	-57.07	-37.71	-57.02	70.56		First SDI MWD Survey
6900.18	7005.00	2.95	1.358	-711.66	-319.85	-711.22	826.01		Curve KOP
6914.16	7019.00	3.35	1.860	-710.89	-319.83	-710.45	826.50		First SDI MWD Curve Survey
7507.96	7925.00	84.36	2.320	-130.00	-315.25	-129.57	1408.78		Last SDI MWD Curve Survey
7512.43	8017.00	90.07	1.380	-38.19	-312.28	-37.77	1500.63		First SDI MWD Lateral Survey
7532.59	17902.00	89.43	354.000	9844.38	-370.25	9844.87	11384.97		Last SDI MWD Survey
7533.24	17967.00	89.43	354.000	9909.02	-377.05	9909.52	11449.97		Projection to TD

PROJECT DETAILS: Weld County, CO NAD 83

Geodetic System: US State Plane 1983  
Datum: North American Datum 1983  
Ellipsoid: GRS 1980  
Zone: Colorado Northern Zone

System Datum: Mean Sea Level  
Local North: True





# HighPoint Resources

Weld County, CO NAD 83

Critter Creek 15 SW

Critter Creek 15-6302D

OH

Design: OH

## Standard Survey Report

17 October, 2018



<b>Company:</b>	HighPoint Resources	<b>Local Co-ordinate Reference:</b>	Well Critter Creek 15-6302D
<b>Project:</b>	Weld County, CO NAD 83	<b>TVD Reference:</b>	GL 5242.3' & KB 16.5' @ 5258.80ft (Cade 24)
<b>Site:</b>	Critter Creek 15 SW	<b>MD Reference:</b>	GL 5242.3' & KB 16.5' @ 5258.80ft (Cade 24)
<b>Well:</b>	Critter Creek 15-6302D	<b>North Reference:</b>	True
<b>Wellbore:</b>	OH	<b>Survey Calculation Method:</b>	Minimum Curvature
<b>Design:</b>	OH	<b>Database:</b>	Casper District

<b>Project</b>	Weld County, CO NAD 83		
<b>Map System:</b>	US State Plane 1983	<b>System Datum:</b>	Mean Sea Level
<b>Geo Datum:</b>	North American Datum 1983		
<b>Map Zone:</b>	Colorado Northern Zone		

Site		Critter Creek 15 SW			
Site Position:		Northing:	1,578,441.59 usft	Latitude:	40° 54' 58.471 N
From:	Lat/Long	Easting:	3,297,253.35 usft	Longitude:	104° 25' 28.150 W
Position Uncertainty:	0.00 ft	Slot Radius:	13.200 in	Grid Convergence:	0.69 °

Well	Critter Creek 15-6302D, 400' FSL 1115' FWL Sec 15 T11N R63W					
Well Position	+N/-S	0.00 ft	Northing:	1,578,441.71 usft	Latitude:	40° 54' 58.471 N
	+E/-W	0.00 ft	Easting:	3,297,268.27 usft	Longitude:	104° 25' 27.955 W
Position Uncertainty		0.00 ft	Wellhead Elevation:	0.00 ft	Ground Level:	5,242.30 ft

<b>Wellbore</b>	OH				
<b>Magnetics</b>	<b>Model Name</b>	<b>Sample Date</b>	<b>Declination (°)</b>	<b>Dip Angle (°)</b>	<b>Field Strength (nT)</b>
	HDGM	8/17/2018	8.27	67.18	52,754

<b>Design</b>	OH				
<b>Audit Notes:</b>					
<b>Version:</b>	1.0	<b>Phase:</b>	ACTUAL	<b>Tie On Depth:</b>	0.00
<b>Vertical Section:</b>	<b>Depth From (TVD) (ft)</b>	<b>+N/-S (ft)</b>	<b>+E/-W (ft)</b>	<b>Direction (°)</b>	
	0.00	0.00	0.00	359.922	

<b>Survey Program</b>	<b>Date</b>	10/17/2018			
<b>From (ft)</b>	<b>To (ft)</b>	<b>Survey (Wellbore)</b>	<b>Tool Name</b>	<b>Description</b>	
160.00	1,493.00	Survey #1 - Surface (OH)	OWSG MWD	OWSG MWD - Standard	
1,606.00	7,925.00	Survey #2 - Intermediate (OH)	OWSG MWD	OWSG MWD - Standard	
8,017.00	17,967.00	Survey #3 - Lateral (OH)	OWSG MWD	OWSG MWD - Standard	

<b>Survey</b>										
<b>Measured Depth (ft)</b>	<b>Inclination (°)</b>	<b>Azimuth (°)</b>	<b>Vertical Depth (ft)</b>	<b>+N/-S (ft)</b>	<b>+E/-W (ft)</b>	<b>Vertical Section (ft)</b>	<b>Dogleg Rate (°/100ft)</b>	<b>Build Rate (°/100ft)</b>	<b>Turn Rate (°/100ft)</b>	
0.00	0.00	0.000	0.00	0.00	0.00	0.00	0.00	0.00	0.00	
160.00	0.31	299.840	160.00	0.22	-0.38	0.22	0.19	0.19	0.00	
<b>First GeoGuidance MWD Survey</b>										
223.00	0.40	279.940	223.00	0.34	-0.74	0.34	0.24	0.14	-31.59	
287.00	0.31	272.380	287.00	0.38	-1.13	0.39	0.16	-0.14	-11.81	
350.00	0.40	26.590	350.00	0.59	-1.20	0.59	0.95	0.14	181.29	
413.00	0.79	204.400	412.99	0.39	-1.29	0.39	1.89	0.62	282.24	
477.00	0.97	203.820	476.99	-0.51	-1.69	-0.51	0.28	0.28	-0.91	
540.00	1.53	230.320	539.97	-1.53	-2.55	-1.53	1.26	0.89	42.06	

<b>Company:</b>	HighPoint Resources	<b>Local Co-ordinate Reference:</b>	Well Critter Creek 15-6302D
<b>Project:</b>	Weld County, CO NAD 83	<b>TVD Reference:</b>	GL 5242.3' & KB 16.5' @ 5258.80ft (Cade 24)
<b>Site:</b>	Critter Creek 15 SW	<b>MD Reference:</b>	GL 5242.3' & KB 16.5' @ 5258.80ft (Cade 24)
<b>Well:</b>	Critter Creek 15-6302D	<b>North Reference:</b>	True
<b>Wellbore:</b>	OH	<b>Survey Calculation Method:</b>	Minimum Curvature
<b>Design:</b>	OH	<b>Database:</b>	Casper District

Survey									
Measured Depth (ft)	Inclination (°)	Azimuth (°)	Vertical Depth (ft)	+N/-S (ft)	+E/-W (ft)	Vertical Section (ft)	Dogleg Rate (°/100ft)	Build Rate (°/100ft)	Turn Rate (°/100ft)
604.00	1.54	219.680	603.95	-2.74	-3.76	-2.74	0.44	0.02	-16.63
667.00	1.71	202.720	666.92	-4.26	-4.66	-4.25	0.81	0.27	-26.92
743.00	2.94	213.580	742.86	-6.93	-6.18	-6.92	1.71	1.62	14.29
807.00	3.43	214.990	806.76	-9.87	-8.18	-9.85	0.78	0.77	2.20
892.00	3.47	215.160	891.61	-14.05	-11.12	-14.04	0.05	0.05	0.20
968.00	3.30	215.250	967.48	-17.72	-13.71	-17.70	0.22	-0.22	0.12
1,044.00	3.21	212.830	1,043.35	-21.29	-16.12	-21.27	0.22	-0.12	-3.18
1,133.00	3.74	212.040	1,132.19	-25.85	-19.01	-25.82	0.60	0.60	-0.89
1,221.00	3.87	207.210	1,219.99	-30.92	-21.90	-30.89	0.39	0.15	-5.49
1,307.00	3.69	206.370	1,305.81	-35.98	-24.45	-35.95	0.22	-0.21	-0.98
1,396.00	4.92	207.740	1,394.55	-41.93	-27.50	-41.89	1.39	1.38	1.54
1,493.00	4.33	214.740	1,491.24	-48.62	-31.52	-48.57	0.84	-0.61	7.22
Last GeoGuidance MWD Survey									
1,606.00	6.31	217.160	1,603.75	-57.07	-37.71	-57.02	1.76	1.75	2.14
First SDI MWD Survey									
1,697.00	9.02	218.520	1,693.93	-66.64	-45.17	-66.58	2.98	2.98	1.49
1,787.00	10.27	215.130	1,782.65	-78.72	-54.18	-78.65	1.52	1.39	-3.77
1,879.00	10.40	217.680	1,873.16	-92.00	-63.98	-91.91	0.52	0.14	2.77
1,970.00	10.55	222.290	1,962.65	-104.66	-74.60	-104.56	0.94	0.16	5.07
2,061.00	13.09	221.740	2,051.71	-118.52	-87.07	-118.40	2.79	2.79	-0.60
2,152.00	14.66	216.590	2,140.05	-135.46	-100.80	-135.32	2.19	1.73	-5.66
2,243.00	16.52	213.920	2,227.70	-155.44	-114.88	-155.28	2.19	2.04	-2.93
2,334.00	16.87	204.510	2,314.88	-178.19	-127.58	-178.02	2.99	0.38	-10.34
2,428.00	18.11	199.340	2,404.54	-204.39	-138.08	-204.20	2.11	1.32	-5.50
2,522.00	18.52	195.990	2,493.78	-232.53	-147.03	-232.33	1.20	0.44	-3.56
2,615.00	18.26	194.110	2,582.03	-260.86	-154.65	-260.65	0.70	-0.28	-2.02
2,708.00	20.28	193.040	2,669.82	-290.69	-161.84	-290.47	2.20	2.17	-1.15
2,801.00	19.68	191.610	2,757.22	-321.74	-168.63	-321.51	0.83	-0.65	-1.54
2,895.00	19.49	189.260	2,845.78	-352.72	-174.34	-352.48	0.86	-0.20	-2.50
2,989.00	20.06	194.190	2,934.25	-383.83	-180.81	-383.58	1.87	0.61	5.24
3,082.00	19.21	201.740	3,021.85	-413.51	-190.39	-413.25	2.87	-0.91	8.12
3,176.00	19.05	197.750	3,110.67	-442.48	-200.80	-442.21	1.40	-0.17	-4.24
3,270.00	18.87	203.290	3,199.57	-471.06	-211.49	-470.77	1.92	-0.19	5.89
3,364.00	18.75	199.800	3,288.56	-499.23	-222.61	-498.93	1.20	-0.13	-3.71
3,458.00	19.26	202.970	3,377.43	-527.72	-233.78	-527.40	1.22	0.54	3.37
3,552.00	19.03	203.050	3,466.23	-556.10	-245.83	-555.76	0.25	-0.24	0.09
3,646.00	16.63	200.870	3,555.71	-582.77	-256.63	-582.42	2.65	-2.55	-2.32
3,740.00	14.83	200.060	3,646.19	-606.64	-265.54	-606.28	1.93	-1.91	-0.86
3,834.00	13.56	202.400	3,737.32	-628.13	-273.87	-627.76	1.48	-1.35	2.49
3,928.00	12.48	203.110	3,828.90	-647.66	-282.06	-647.28	1.16	-1.15	0.76
4,022.00	10.98	206.940	3,920.94	-664.99	-290.10	-664.59	1.80	-1.60	4.07
4,116.00	9.03	208.750	4,013.50	-679.44	-297.70	-679.03	2.10	-2.07	1.93
4,210.00	6.77	203.980	4,106.61	-690.97	-303.50	-690.55	2.50	-2.40	-5.07
4,303.00	6.16	214.210	4,199.02	-700.10	-308.54	-699.68	1.40	-0.66	11.00

<b>Company:</b>	HighPoint Resources	<b>Local Co-ordinate Reference:</b>	Well Critter Creek 15-6302D
<b>Project:</b>	Weld County, CO NAD 83	<b>TVD Reference:</b>	GL 5242.3' & KB 16.5' @ 5258.80ft (Cade 24)
<b>Site:</b>	Critter Creek 15 SW	<b>MD Reference:</b>	GL 5242.3' & KB 16.5' @ 5258.80ft (Cade 24)
<b>Well:</b>	Critter Creek 15-6302D	<b>North Reference:</b>	True
<b>Wellbore:</b>	OH	<b>Survey Calculation Method:</b>	Minimum Curvature
<b>Design:</b>	OH	<b>Database:</b>	Casper District

Survey									
Measured Depth (ft)	Inclination (°)	Azimuth (°)	Vertical Depth (ft)	+N/-S (ft)	+E/-W (ft)	Vertical Section (ft)	Dogleg Rate (°/100ft)	Build Rate (°/100ft)	Turn Rate (°/100ft)
4,397.00	3.85	221.190	4,292.65	-706.65	-313.45	-706.22	2.54	-2.46	7.43
4,491.00	1.87	215.890	4,386.53	-710.27	-316.43	-709.84	2.12	-2.11	-5.64
4,584.00	0.14	314.610	4,479.52	-711.42	-317.40	-710.98	2.04	-1.86	106.15
4,678.00	0.28	352.820	4,573.51	-711.11	-317.51	-710.67	0.20	0.15	40.65
4,772.00	0.40	21.210	4,667.51	-710.57	-317.42	-710.14	0.22	0.13	30.20
4,866.00	0.51	342.310	4,761.51	-709.87	-317.43	-709.44	0.34	0.12	-41.38
4,960.00	0.51	310.610	4,855.51	-709.20	-317.87	-708.77	0.30	0.00	-33.72
5,053.00	0.20	296.170	4,948.50	-708.86	-318.33	-708.42	0.34	-0.33	-15.53
5,147.00	0.41	333.260	5,042.50	-708.48	-318.63	-708.05	0.30	0.22	39.46
5,240.00	0.34	311.560	5,135.50	-708.00	-318.99	-707.57	0.17	-0.08	-23.33
5,334.00	0.67	309.800	5,229.50	-707.47	-319.62	-707.03	0.35	0.35	-1.87
5,428.00	0.76	302.560	5,323.49	-706.78	-320.57	-706.34	0.14	0.10	-7.70
5,521.00	2.52	270.550	5,416.45	-706.43	-323.13	-705.99	2.06	1.89	-34.42
5,615.00	1.53	259.250	5,510.39	-706.64	-326.43	-706.20	1.13	-1.05	-12.02
5,708.00	1.17	249.170	5,603.36	-707.21	-328.54	-706.76	0.46	-0.39	-10.84
5,801.00	0.58	207.070	5,696.35	-707.97	-329.64	-707.52	0.90	-0.63	-45.27
5,895.00	0.71	147.130	5,790.35	-708.88	-329.54	-708.43	0.70	0.14	-63.77
5,989.00	1.05	146.310	5,884.34	-710.09	-328.75	-709.64	0.36	0.36	-0.87
6,082.00	1.18	149.330	5,977.32	-711.62	-327.79	-711.17	0.15	0.14	3.25
6,175.00	1.31	158.630	6,070.30	-713.43	-326.91	-712.99	0.26	0.14	10.00
6,269.00	1.21	133.900	6,164.28	-715.12	-325.80	-714.68	0.58	-0.11	-26.31
6,363.00	0.98	102.090	6,258.26	-715.98	-324.30	-715.54	0.68	-0.24	-33.84
6,457.00	0.84	96.080	6,352.25	-716.22	-322.83	-715.78	0.18	-0.15	-6.39
6,550.00	0.67	82.360	6,445.24	-716.22	-321.61	-715.78	0.27	-0.18	-14.75
6,643.00	0.69	76.810	6,538.23	-716.02	-320.53	-715.58	0.07	0.02	-5.97
6,736.00	0.57	29.200	6,631.23	-715.49	-319.76	-715.05	0.56	-0.13	-51.19
6,830.00	0.24	340.070	6,725.23	-714.90	-319.60	-714.46	0.48	-0.35	-52.27
6,925.00	0.67	346.870	6,820.22	-714.17	-319.79	-713.73	0.46	0.45	7.16
7,005.00	2.95	1.358	6,900.18	-711.66	-319.85	-711.22	2.88	2.85	18.11
Curve KOP									
7,019.00	3.35	1.860	6,914.16	-710.89	-319.83	-710.45	2.88	2.87	3.59
First SDI MWD Curve Survey									
7,113.00	13.20	5.550	7,007.06	-697.43	-318.70	-696.99	10.49	10.48	3.93
7,207.00	21.31	7.390	7,096.76	-669.76	-315.46	-669.33	8.65	8.63	1.96
7,301.00	29.79	3.360	7,181.50	-629.43	-311.88	-629.01	9.20	9.02	-4.29
7,394.00	35.63	3.680	7,259.71	-579.29	-308.79	-578.87	6.28	6.28	0.34
7,488.00	43.47	352.510	7,332.23	-519.74	-311.25	-519.32	11.23	8.34	-11.88
7,583.00	55.53	354.980	7,393.82	-448.06	-318.97	-447.63	12.85	12.69	2.60
7,676.00	63.13	0.950	7,441.26	-368.23	-321.64	-367.79	9.86	8.17	6.42
7,770.00	71.73	1.650	7,477.30	-281.53	-319.66	-281.10	9.17	9.15	0.74
7,864.00	80.43	1.420	7,499.89	-190.42	-317.22	-189.98	9.26	9.26	-0.24
7,925.00	84.36	2.320	7,507.96	-130.00	-315.25	-129.57	6.61	6.44	1.48
Last SDI MWD Curve Survey									

<b>Company:</b>	HighPoint Resources	<b>Local Co-ordinate Reference:</b>	Well Critter Creek 15-6302D
<b>Project:</b>	Weld County, CO NAD 83	<b>TVD Reference:</b>	GL 5242.3' & KB 16.5' @ 5258.80ft (Cade 24)
<b>Site:</b>	Critter Creek 15 SW	<b>MD Reference:</b>	GL 5242.3' & KB 16.5' @ 5258.80ft (Cade 24)
<b>Well:</b>	Critter Creek 15-6302D	<b>North Reference:</b>	True
<b>Wellbore:</b>	OH	<b>Survey Calculation Method:</b>	Minimum Curvature
<b>Design:</b>	OH	<b>Database:</b>	Casper District

Survey										
Measured Depth (ft)	Inclination (°)	Azimuth (°)	Vertical Depth (ft)	+N/-S (ft)	+E/-W (ft)	Vertical Section (ft)	Dogleg Rate (°/100ft)	Build Rate (°/100ft)	Turn Rate (°/100ft)	
8,017.00	90.07	1.380	7,512.43	-38.19	-312.28	-37.77	6.29	6.21	-1.02	
<b>First SDI MWD Lateral Survey</b>										
8,048.00	90.74	0.750	7,512.21	-7.20	-311.71	-6.77	2.97	2.16	-2.03	
8,142.00	90.07	357.900	7,511.55	86.78	-312.81	87.21	3.11	-0.71	-3.03	
8,236.00	90.37	358.360	7,511.19	180.73	-315.88	181.16	0.58	0.32	0.49	
8,329.00	88.46	359.450	7,512.14	273.70	-317.66	274.14	2.36	-2.05	1.17	
8,422.00	88.15	0.600	7,514.89	366.66	-317.62	367.09	1.28	-0.33	1.24	
8,516.00	87.85	0.990	7,518.17	460.59	-316.31	461.03	0.52	-0.32	0.41	
8,611.00	88.69	359.590	7,521.04	555.55	-315.83	555.98	1.72	0.88	-1.47	
8,705.00	89.50	359.520	7,522.52	649.53	-316.56	649.96	0.86	0.86	-0.07	
8,799.00	87.68	357.900	7,524.83	743.47	-318.68	743.91	2.59	-1.94	-1.72	
8,893.00	88.29	357.950	7,528.14	837.35	-322.08	837.79	0.65	0.65	0.05	
8,987.00	89.46	0.420	7,529.99	931.32	-323.42	931.76	2.91	1.24	2.63	
9,081.00	90.03	359.030	7,530.40	1,025.31	-323.87	1,025.75	1.60	0.61	-1.48	
9,174.00	90.44	359.440	7,530.02	1,118.30	-325.11	1,118.74	0.62	0.44	0.44	
9,269.00	90.67	357.310	7,529.10	1,213.25	-327.80	1,213.70	2.26	0.24	-2.24	
9,362.00	89.33	359.490	7,529.10	1,306.21	-330.40	1,306.66	2.75	-1.44	2.34	
9,456.00	89.70	358.710	7,529.90	1,400.19	-331.88	1,400.64	0.92	0.39	-0.83	
9,550.00	89.87	357.450	7,530.25	1,494.14	-335.02	1,494.59	1.35	0.18	-1.34	
9,644.00	89.90	359.290	7,530.44	1,588.10	-337.70	1,588.55	1.96	0.03	1.96	
9,738.00	90.20	357.750	7,530.36	1,682.06	-340.13	1,682.52	1.67	0.32	-1.64	
9,832.00	89.30	0.800	7,530.77	1,776.04	-341.32	1,776.50	3.38	-0.96	3.24	
9,926.00	89.40	359.210	7,531.83	1,870.03	-341.31	1,870.49	1.69	0.11	-1.69	
10,020.00	89.50	0.670	7,532.74	1,964.03	-341.41	1,964.49	1.56	0.11	1.55	
10,113.00	90.13	0.480	7,533.04	2,057.02	-340.47	2,057.48	0.71	0.68	-0.20	
10,207.00	90.27	359.670	7,532.71	2,151.02	-340.35	2,151.48	0.87	0.15	-0.86	
10,301.00	90.80	0.730	7,531.83	2,245.01	-340.02	2,245.47	1.26	0.56	1.13	
10,395.00	88.99	0.840	7,532.00	2,339.00	-338.73	2,339.46	1.93	-1.93	0.12	
10,490.00	89.16	0.080	7,533.54	2,433.98	-337.97	2,434.44	0.82	0.18	-0.80	
10,580.00	89.97	0.170	7,534.22	2,523.98	-337.77	2,524.44	0.91	0.90	0.10	
10,671.00	90.64	358.940	7,533.74	2,614.97	-338.48	2,615.43	1.54	0.74	-1.35	
10,762.00	90.07	359.310	7,533.17	2,705.96	-339.87	2,706.42	0.75	-0.63	0.41	
10,853.00	90.03	1.560	7,533.09	2,796.95	-339.18	2,797.41	2.47	-0.04	2.47	
10,944.00	90.00	1.340	7,533.07	2,887.92	-336.88	2,888.38	0.24	-0.03	-0.24	
11,036.00	90.40	1.930	7,532.75	2,979.88	-334.25	2,980.34	0.77	0.43	0.64	
11,128.00	90.84	0.910	7,531.75	3,071.85	-331.97	3,072.30	1.21	0.48	-1.11	
11,219.00	91.07	1.390	7,530.23	3,162.82	-330.15	3,163.26	0.58	0.25	0.53	
11,310.00	89.26	1.150	7,529.97	3,253.79	-328.13	3,254.23	2.01	-1.99	-0.26	
11,401.00	89.30	0.950	7,531.12	3,344.77	-326.46	3,345.21	0.22	0.04	-0.22	
11,492.00	89.66	359.510	7,531.94	3,435.76	-326.10	3,436.20	1.63	0.40	-1.58	
11,583.00	89.40	359.890	7,532.69	3,526.76	-326.57	3,527.20	0.51	-0.29	0.42	
11,674.00	89.43	0.250	7,533.62	3,617.75	-326.46	3,618.19	0.40	0.03	0.40	
11,765.00	89.73	359.900	7,534.28	3,708.75	-326.34	3,709.19	0.51	0.33	-0.38	
11,857.00	89.26	358.010	7,535.10	3,800.73	-328.02	3,801.17	2.12	-0.51	-2.05	

<b>Company:</b>	HighPoint Resources	<b>Local Co-ordinate Reference:</b>	Well Critter Creek 15-6302D
<b>Project:</b>	Weld County, CO NAD 83	<b>TVD Reference:</b>	GL 5242.3' & KB 16.5' @ 5258.80ft (Cade 24)
<b>Site:</b>	Critter Creek 15 SW	<b>MD Reference:</b>	GL 5242.3' & KB 16.5' @ 5258.80ft (Cade 24)
<b>Well:</b>	Critter Creek 15-6302D	<b>North Reference:</b>	True
<b>Wellbore:</b>	OH	<b>Survey Calculation Method:</b>	Minimum Curvature
<b>Design:</b>	OH	<b>Database:</b>	Casper District

Survey										
Measured Depth (ft)	Inclination (°)	Azimuth (°)	Vertical Depth (ft)	+N/-S (ft)	+E/-W (ft)	Vertical Section (ft)	Dogleg Rate (°/100ft)	Build Rate (°/100ft)	Turn Rate (°/100ft)	
11,948.00	89.46	1.470	7,536.11	3,891.70	-328.43	3,892.15	3.81	0.22	3.80	
12,039.00	89.43	0.860	7,536.99	3,982.68	-326.58	3,983.12	0.67	-0.03	-0.67	
12,131.00	89.66	359.430	7,537.72	4,074.68	-326.35	4,075.12	1.57	0.25	-1.55	
12,221.00	90.84	0.500	7,537.33	4,164.67	-326.41	4,165.11	1.77	1.31	1.19	
12,312.00	90.70	0.400	7,536.11	4,255.66	-325.69	4,256.10	0.19	-0.15	-0.11	
12,403.00	91.21	359.250	7,534.59	4,346.65	-325.97	4,347.09	1.38	0.56	-1.26	
12,495.00	89.97	358.820	7,533.64	4,438.63	-327.52	4,439.07	1.43	-1.35	-0.47	
12,586.00	89.93	357.960	7,533.72	4,529.59	-330.07	4,530.03	0.95	-0.04	-0.95	
12,677.00	90.00	358.890	7,533.78	4,620.55	-332.58	4,621.00	1.02	0.08	1.02	
12,768.00	90.50	357.180	7,533.38	4,711.50	-335.70	4,711.95	1.96	0.55	-1.88	
12,858.00	90.07	1.130	7,532.93	4,801.47	-337.02	4,801.92	4.41	-0.48	4.39	
12,949.00	90.20	1.210	7,532.72	4,892.45	-335.17	4,892.90	0.17	0.14	0.09	
13,040.00	90.40	0.820	7,532.24	4,983.43	-333.55	4,983.88	0.48	0.22	-0.43	
13,131.00	90.50	0.260	7,531.53	5,074.42	-332.70	5,074.87	0.63	0.11	-0.62	
13,221.00	88.89	0.170	7,532.01	5,164.42	-332.36	5,164.87	1.79	-1.79	-0.10	
13,313.00	88.99	358.410	7,533.71	5,256.39	-333.50	5,256.84	1.92	0.11	-1.91	
13,404.00	89.36	359.690	7,535.02	5,347.37	-335.01	5,347.82	1.46	0.41	1.41	
13,495.00	89.90	359.820	7,535.61	5,438.37	-335.40	5,438.82	0.61	0.59	0.14	
13,586.00	90.40	358.700	7,535.37	5,529.36	-336.57	5,529.81	1.35	0.55	-1.23	
13,677.00	90.54	358.790	7,534.62	5,620.33	-338.56	5,620.79	0.18	0.15	0.10	
13,768.00	90.17	357.070	7,534.06	5,711.27	-341.85	5,711.73	1.93	-0.41	-1.89	
13,860.00	90.10	359.750	7,533.84	5,803.22	-344.40	5,803.69	2.91	-0.08	2.91	
13,950.00	90.87	359.010	7,533.08	5,893.21	-345.38	5,893.68	1.19	0.86	-0.82	
14,042.00	89.77	358.040	7,532.57	5,985.18	-347.74	5,985.65	1.59	-1.20	-1.05	
14,133.00	89.09	0.160	7,533.47	6,076.16	-349.17	6,076.63	2.45	-0.75	2.33	
14,224.00	89.93	359.970	7,534.25	6,167.15	-349.07	6,167.62	0.95	0.92	-0.21	
14,316.00	90.40	1.400	7,533.99	6,259.14	-347.97	6,259.61	1.64	0.51	1.55	
14,407.00	90.94	0.050	7,532.92	6,350.13	-346.82	6,350.59	1.60	0.59	-1.48	
14,498.00	89.40	1.150	7,532.65	6,441.12	-345.87	6,441.58	2.08	-1.69	1.21	
14,589.00	88.93	359.510	7,533.98	6,532.10	-345.34	6,532.57	1.87	-0.52	-1.80	
14,680.00	89.60	0.890	7,535.15	6,623.09	-345.02	6,623.56	1.69	0.74	1.52	
14,772.00	90.13	359.190	7,535.36	6,715.09	-344.96	6,715.55	1.94	0.58	-1.85	
14,863.00	90.77	359.110	7,534.65	6,806.08	-346.31	6,806.54	0.71	0.70	-0.09	
14,955.00	89.13	1.100	7,534.73	6,898.07	-346.14	6,898.53	2.80	-1.78	2.16	
15,046.00	89.83	359.180	7,535.55	6,989.06	-345.92	6,989.52	2.25	0.77	-2.11	
15,137.00	90.37	359.500	7,535.39	7,080.05	-346.97	7,080.52	0.69	0.59	0.35	
15,228.00	88.86	0.690	7,536.01	7,171.05	-346.82	7,171.51	2.11	-1.66	1.31	
15,320.00	89.46	358.630	7,537.36	7,263.03	-347.36	7,263.49	2.33	0.65	-2.24	
15,410.00	90.00	0.180	7,537.78	7,353.02	-348.30	7,353.49	1.82	0.60	1.72	
15,502.00	90.54	358.940	7,537.35	7,445.01	-349.00	7,445.48	1.47	0.59	-1.35	
15,593.00	89.36	359.830	7,537.43	7,536.01	-349.98	7,536.48	1.62	-1.30	0.98	
15,684.00	89.80	0.940	7,538.09	7,627.00	-349.37	7,627.47	1.31	0.48	1.22	
15,776.00	90.47	1.130	7,537.88	7,718.98	-347.71	7,719.45	0.76	0.73	0.21	



<b>Company:</b>	HighPoint Resources	<b>Local Co-ordinate Reference:</b>	Well Critter Creek 15-6302D
<b>Project:</b>	Weld County, CO NAD 83	<b>TVD Reference:</b>	GL 5242.3' & KB 16.5' @ 5258.80ft (Cade 24)
<b>Site:</b>	Critter Creek 15 SW	<b>MD Reference:</b>	GL 5242.3' & KB 16.5' @ 5258.80ft (Cade 24)
<b>Well:</b>	Critter Creek 15-6302D	<b>North Reference:</b>	True
<b>Wellbore:</b>	OH	<b>Survey Calculation Method:</b>	Minimum Curvature
<b>Design:</b>	OH	<b>Database:</b>	Casper District

Survey										
Measured Depth (ft)	Inclination (°)	Azimuth (°)	Vertical Depth (ft)	+N/-S (ft)	+E/-W (ft)	Vertical Section (ft)	Dogleg Rate (°/100ft)	Build Rate (°/100ft)	Turn Rate (°/100ft)	
15,867.00	91.21	359.240	7,536.54	7,809.97	-347.41	7,810.43	2.23	0.81	-2.08	
15,957.00	90.47	359.050	7,535.22	7,899.95	-348.76	7,900.42	0.85	-0.82	-0.21	
16,048.00	90.74	359.910	7,534.26	7,990.94	-349.58	7,991.41	0.99	0.30	0.95	
16,140.00	90.17	359.590	7,533.53	8,082.93	-349.98	8,083.40	0.71	-0.62	-0.35	
16,231.00	89.13	359.760	7,534.09	8,173.93	-350.50	8,174.40	1.16	-1.14	0.19	
16,322.00	89.53	0.180	7,535.15	8,264.92	-350.55	8,265.39	0.64	0.44	0.46	
16,413.00	90.10	1.400	7,535.44	8,355.91	-349.29	8,356.38	1.48	0.63	1.34	
16,504.00	90.77	0.740	7,534.75	8,446.89	-347.59	8,447.36	1.03	0.74	-0.73	
16,595.00	88.99	0.010	7,534.94	8,537.89	-347.00	8,538.35	2.11	-1.96	-0.80	
16,686.00	89.16	359.330	7,536.41	8,628.87	-347.52	8,629.34	0.77	0.19	-0.75	
16,777.00	89.73	359.350	7,537.29	8,719.86	-348.57	8,720.33	0.63	0.63	0.02	
16,870.00	90.27	359.670	7,537.29	8,812.86	-349.37	8,813.33	0.67	0.58	0.34	
16,964.00	90.54	359.780	7,536.63	8,906.85	-349.82	8,907.32	0.31	0.29	0.12	
17,058.00	90.80	359.930	7,535.53	9,000.85	-350.05	9,001.32	0.32	0.28	0.16	
17,151.00	89.30	358.590	7,535.45	9,093.84	-351.26	9,094.30	2.16	-1.61	-1.44	
17,246.00	89.36	0.150	7,536.56	9,188.82	-352.30	9,189.29	1.64	0.06	1.64	
17,339.00	89.90	359.730	7,537.16	9,281.82	-352.40	9,282.29	0.74	0.58	-0.45	
17,433.00	90.30	357.970	7,537.00	9,375.79	-354.28	9,376.27	1.92	0.43	-1.87	
17,527.00	90.60	359.370	7,536.26	9,469.76	-356.47	9,470.24	1.52	0.32	1.49	
17,621.00	91.01	358.550	7,534.94	9,563.74	-358.17	9,564.22	0.98	0.44	-0.87	
17,715.00	90.74	358.750	7,533.50	9,657.70	-360.39	9,658.18	0.36	-0.29	0.21	
17,809.00	90.47	357.560	7,532.51	9,751.65	-363.41	9,752.13	1.30	-0.29	-1.27	
17,902.00	89.43	354.000	7,532.59	9,844.38	-370.25	9,844.87	3.99	-1.12	-3.83	
Last SDI MWD Survey										
17,967.00	89.43	354.000	7,533.24	9,909.02	-377.05	9,909.52	0.00	0.00	0.00	
Projection to TD										

Design Annotations					
Measured Depth (ft)	Vertical Depth (ft)	Local Coordinates			
		+N/-S (ft)	+E/-W (ft)	Comment	
160.00	160.00	0.22	-0.38	First GeoGuidance MWD Survey	
1,493.00	1,491.24	-48.62	-31.52	Last GeoGuidance MWD Survey	
1,606.00	1,603.75	-57.07	-37.71	First SDI MWD Survey	
7,005.00	6,900.18	-711.66	-319.85	Curve KOP	
7,019.00	6,914.16	-710.89	-319.83	First SDI MWD Curve Survey	
7,925.00	7,507.96	-130.00	-315.25	Last SDI MWD Curve Survey	
8,017.00	7,512.43	-38.19	-312.28	First SDI MWD Lateral Survey	
17,902.00	7,532.59	9,844.38	-370.25	Last SDI MWD Survey	
17,967.00	7,533.24	9,909.02	-377.05	Projection to TD	

Checked By: _____	Approved By: _____	Date: _____
-------------------	--------------------	-------------