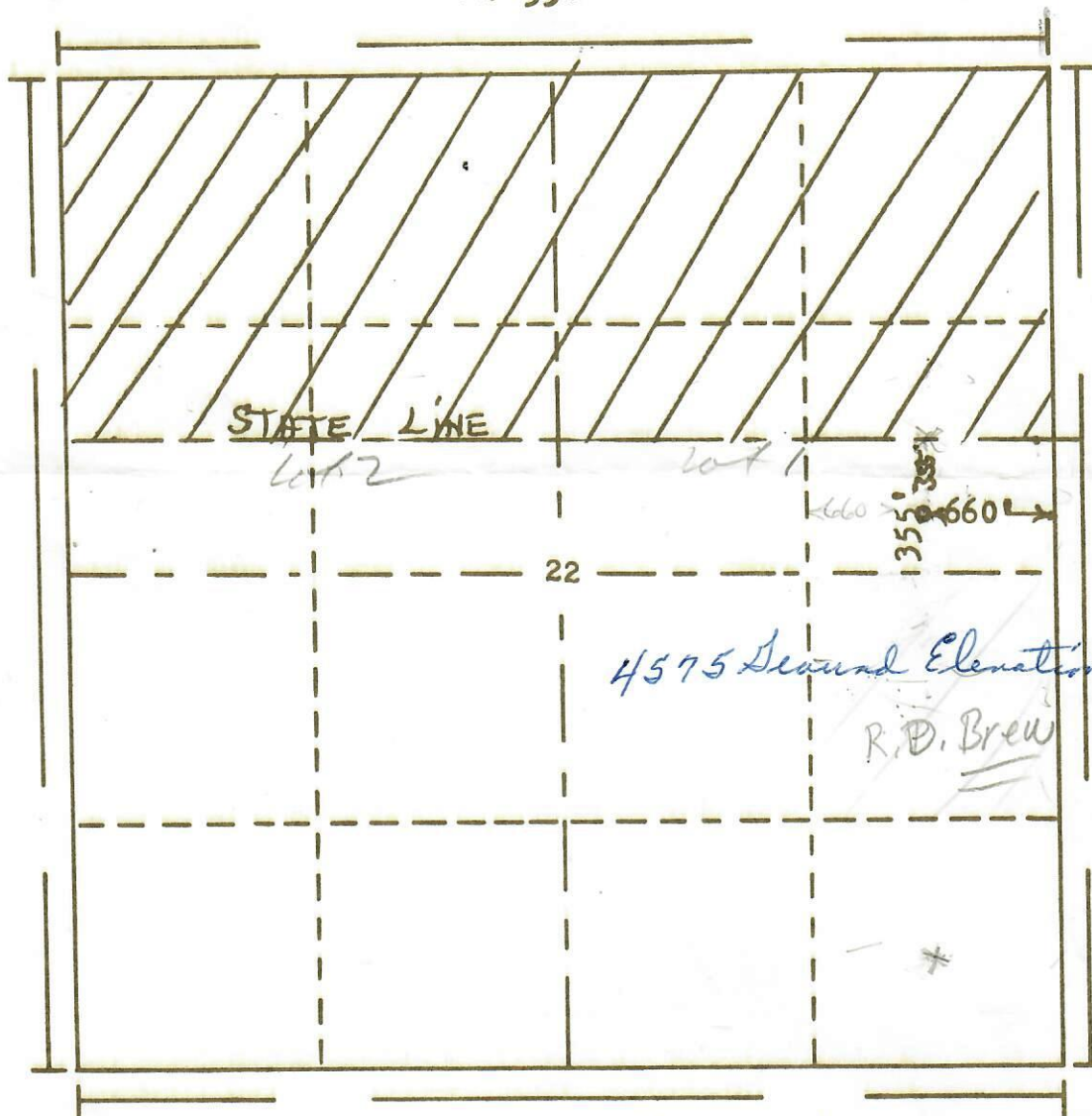




RECEIVED

SEP 11 1969

R. 53W COLO. OIL & GAS CONS. COMM.



Scale... 1" = 1000'

Powers Elevation Company, Inc. of Denver, Colorado  
has in accordance with a request from Donna Bendixen  
for Bill Garber  
determined the location of No.1 Marsh  
to be CE<sub>2</sub> Lot 1 Section 22 Township 12N  
Range 53W of the 6th Principal Meridian  
Logan County, Colorado

I hereby certify that this plat is an  
accurate representation of a correct  
survey showing the location of

Date: 9-5-69

B. J. H. H. H.  
Licensed Land Surveyor No. 2853  
State of Colorado