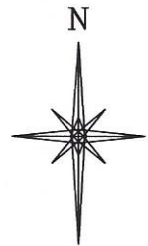
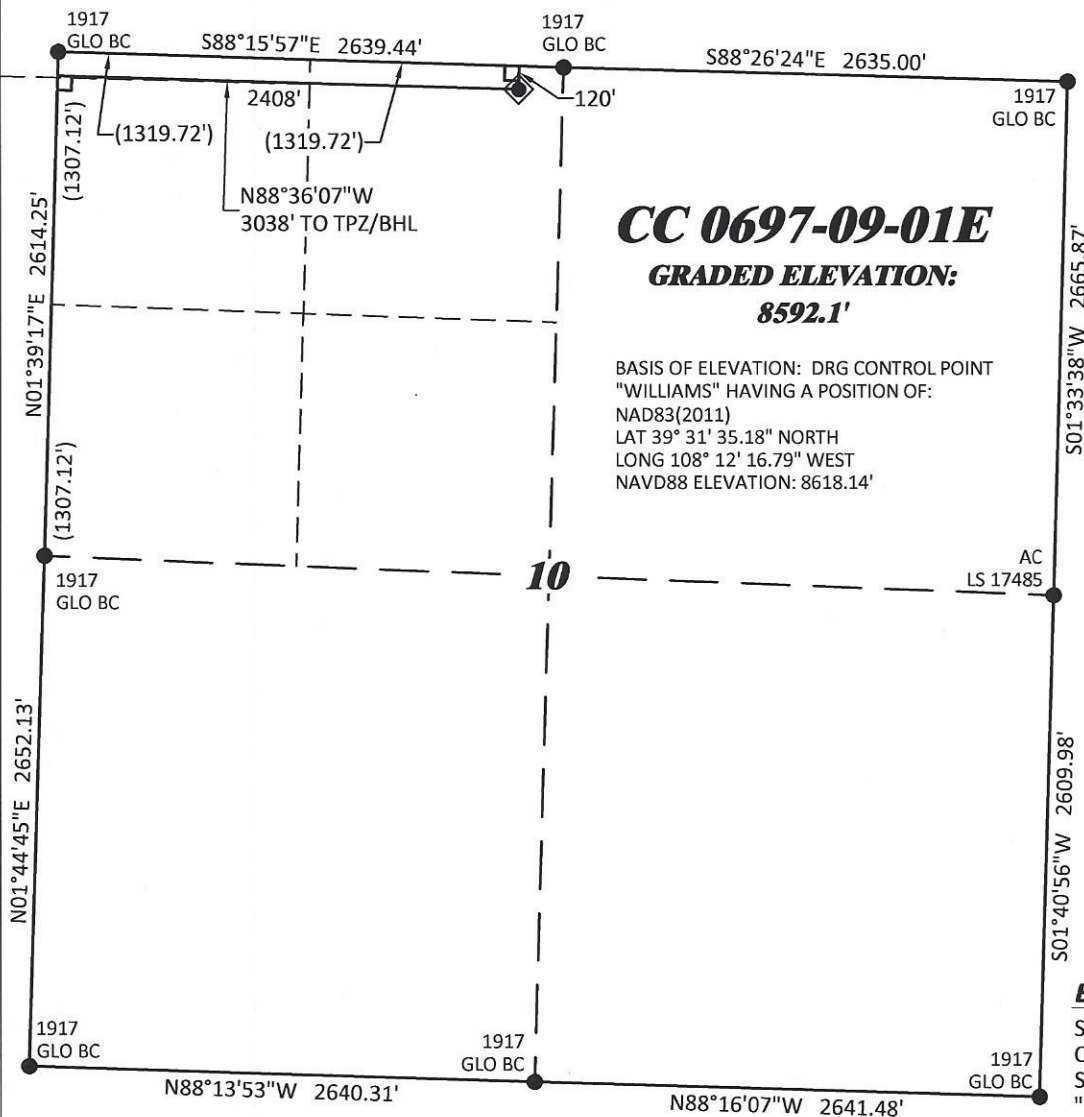


R. 97 W



GRID NORTH
SCALE' 1" = 1000'
500' 0 1000'

T. 6 S.

SHL

LATITUDE (NAD 83)
NORTH 39.544353 DEG.
LONGITUDE (NAD 83)
WEST 108.206932 DEG.
NORTHING (NAD 83)
1634531.31
EASTING (NAD 83)
2236740.34

BASIS OF BEARING/DATUM

SPCS COLORADO CENTRAL NAD 27 BASED
ON GPS OBSERVATIONS AND OPUS
SOLUTION ON DRG CONTROL POINT
"WILLIAMS" HAVING A POSITION OF:
NAD83(2011)
LAT 39° 31' 35.18" NORTH
LONG 108° 12' 16.79" WEST
NAVD88 ELEVATION: 8618.14'

THE NORTH LINE OF THE NW¼ OF
SECTION 10, MONUMENTED BY BLM BC'S
AND BEARING
S 88°15'57" E.

NOTES

1. GPS OPERATOR T. SHERRILL OBSERVED A PDOP OF 1.5.
2. ALL GPS OBSERVATIONS ARE IN COMPLIANCE WITH COGCC RULE No.215.
3. EXISTING IMPROVEMENTS WITHIN 500' OF LOCATION. SEE LOCATION DRAWING.
4. SURROUNDING SURFACE USE IS NATIVE BRUSH, NON CROP RANGELAND.

LEGEND

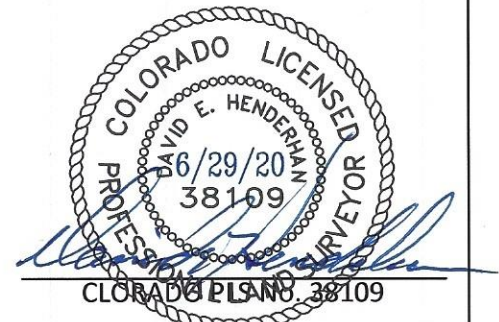
- ◆ WELL LOCATION
- APPROX. TPZ/BHL
- └ DENOTES 90° TIE
- FOUND MONUMENT

SURVEYOR'S STATEMENT

I, DAVID E HENDERHAN, AN EMPLOYEE AND AGENT ON BEHALF OF D.R. GRIFFIN & ASSOCIATES, INC. STATE THE PLAT HEREON IS A CORRECT REPRESENTATION OF A SURVEY MADE UNDER MY SUPERVISION ON THE 23rd DAY OF APRIL, 2020 OF THE SHOWN CC 0697-09-01E AND THAT THE LOCATION HAS BEEN STAKED ON THE GROUND.

Notice: In accordance with Colorado State Law, any legal action based upon any defect in this survey plat must commence within three (3) years after first discovery of such defect. In no event, may any action based upon any defect in this survey plat be commenced more than ten (10) years from the date of certification shown hereon.

CC 610-21-41 PAD



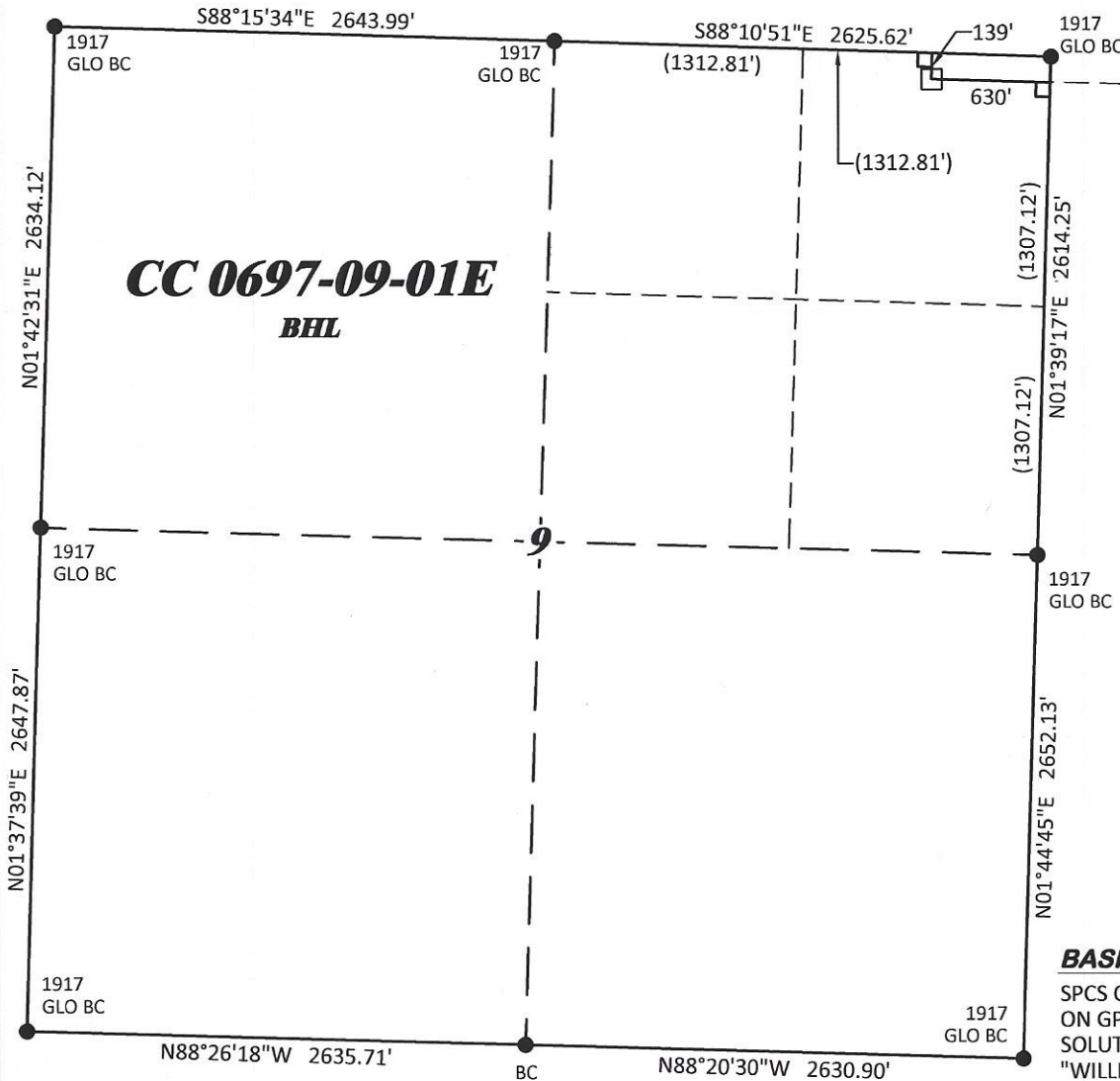
DRG RIFFIN & ASSOCIATES, INC.
(307) 362-5028 1414 ELK ST., ROCK SPRINGS, WY 82901

**PLAT OF DRILLING LOCATION IN
NENW, SECTION 10, FOR
LARAMIE ENERGY, LLC**

**120' F/NL, & 2408' F/WL, SECTION 10,
T. 6 S., R. 97 W, 6TH P.M.,
GARFIELD COUNTY, CLORADO**

DRAWN: 12/27/2017 - TCM/DEH	SCALE: 1" = 1000'
REVISED: 6/29/2020 - DEH	DRG JOB No. 21293
MISC. REVISIONS	EXHIBIT B4

R. 97 W



GRID NORTH

SCALE 1" = 1000'
500' 0 1000'

T. 6 S.

TPZ/BHL
LATITUDE (NAD 83)
NORTH 39.544308 DEG.
LONGITUDE (NAD 83)
WEST 108.217705 DEG.
NORTHING (NAD 83)
1634605
EASTING (NAD 83)
2233703

BASIS OF BEARING/DATUM

SPCS COLORADO CENTRAL NAD 27 BASED
ON GPS OBSERVATIONS AND OPUS
SOLUTION ON DRG CONTROL POINT
"WILLIAMS" HAVING A POSITION OF:
NAD83(2011)
LAT 39° 31' 35.18" NORTH
LONG 108° 12' 16.79" WEST
NAVD88 ELEVATION: 8618.14'

THE EAST LINE OF THE NE¼ OF SECTION 9,
MONUMENTED BY BLM BC'S AND
BEARING
N 01°39'17" E.

LEGEND

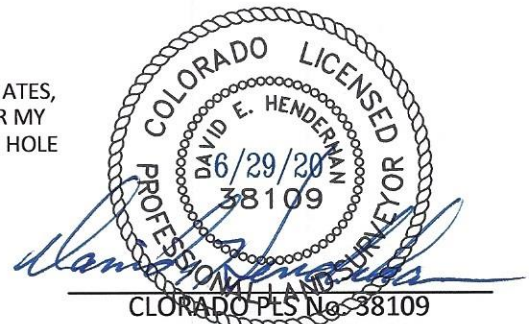
- APPROX. TPZ/BHL
- └ DENOTES 90° TIE
- FOUND MONUMENT

SURVEYOR'S STATEMENT

I, DAVID E HENDERHAN, AN EMPLOYEE AND AGENT ON BEHALF OF D.R. GRIFFIN & ASSOCIATES, INC. STATE THE PLAT HEREON IS A CORRECT REPRESENTATION OF A SURVEY MADE UNDER MY SUPERVISION ON THE 23rd DAY OF APRIL, 2020 OF THE SHOWN CC 0697-09-01E BOTTOM HOLE AS SHOWN ON THIS PLAT.

Notice: In accordance with Colorado State Law, any legal action based upon any defect in this survey plat must commence within three (3) years after first discovery of such defect. In no event, may any action based upon any defect in this survey plat be commenced more than ten (10) years from the date of certification shown hereon.

CC 610-21-41 PAD



CLORADO PLS No. 38109

DRG **RIFFIN & ASSOCIATES, INC.**
(307) 362-5028 1414 ELK ST., ROCK SPRINGS, WY 82901

**PLAT OF BOTTOM HOLE LOCATION IN
NENE, SECTION 9, FOR
LARAMIE ENERGY, LLC**

**139' F/NL, & 630' F/EL, SECTION 9,
T. 6 S., R. 97 W, 6TH P.M.,
GARFIELD COUNTY, CLORADO**

DRAWN: 12/27/2017 - TCM/DEH

SCALE: 1" = 1000'

REVISED: 6/29/2020 - DEH

DRG JOB No. 21293

MISC. REVISIONS

EXHIBIT B4 BHL