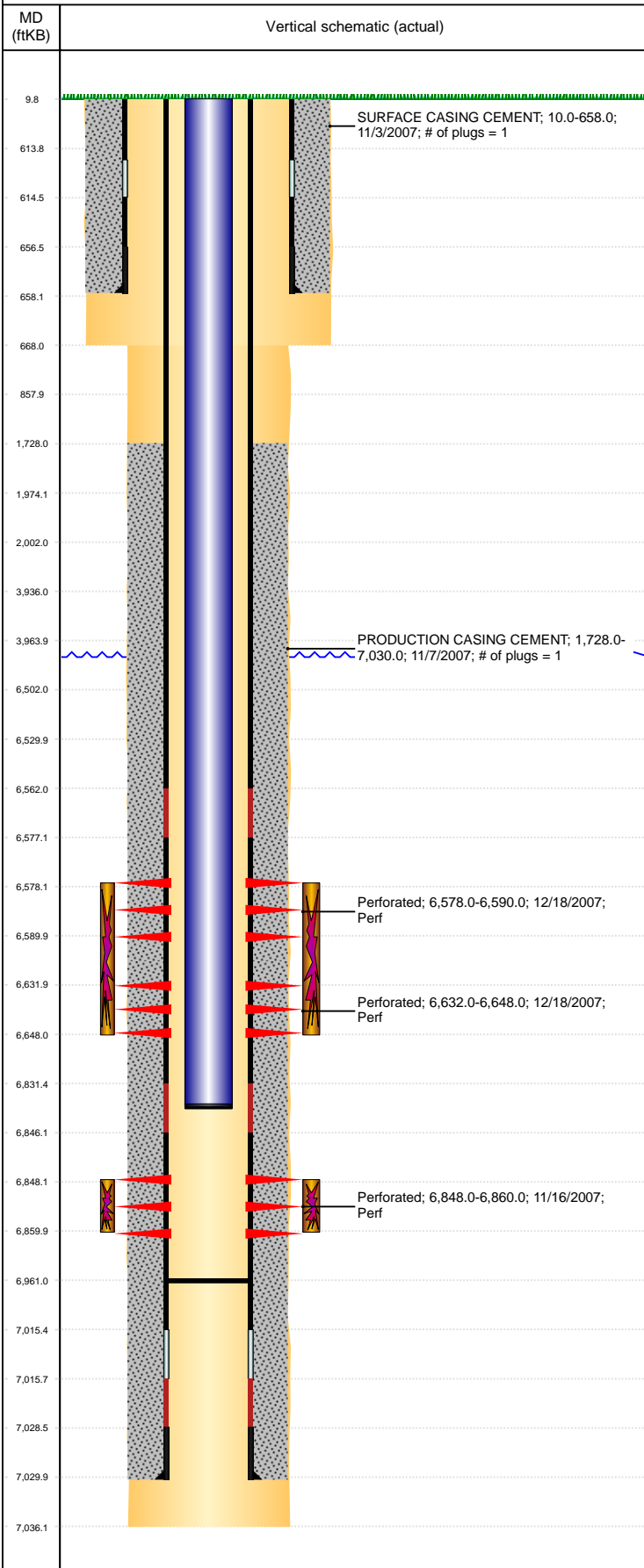


Well Name: WOODY D01-10

VERTICAL, ORIGINAL HOLE, 1/26/2022 9:12:17 AM



Well Header									
API 05-123-26415		Business Unit DJ BASIN			District 15		Well Config VERTICAL		
KB - GL / MSL (ft... 10.00		Spud Date 11/2/2007		P & A Date		Well Production Status PR			SoRT No
Comment CEMENT BASKET ON JT 13 OF SURFACE CSG.									
Surface Location (Congressional)									
Qtr 3 NW	Qtr 4 SE	Section 1	Twnshp 3	Twنش... N	Range 64	Rng E/... W	Actual Latitude (°) 40.25277821	Actual Longitude (°) -104.49782076	
Wellbore Sections									
Section Des			Size (in)			Act Top, MD (ftKB)		Act Btm, MD (ftKB)	
SURFACE			12 1/4			10		668	
PRODUCTION			7 7/8			668		7,036	
Casing Strings									
Csg Des			Run Date		OD (in)	Wt/Len (lb/ft)	Grade	Top, MD (ftKB)	MD (ftKB)
Surface			11/3/2007		8 5/8	24.00	J-55	10.0	658.0
Production			11/7/2007		4 1/2	11.60	M-80	10.0	7,030.0
Cement									
Des					Start Date		Top (ftKB)		Btm (ftKB)
SURFACE CASING CEMENT					11/3/2007		10.0		658.0
PRODUCTION CASING CEMENT					11/7/2007		1,728.0		7,030.0
Zone Statuses									
Zone Name		Status Date	Status	Fluid Type	Job			Prod Method	
NIOBRARA		1/4/2008	PR		DRILLING/COMPLETION - ORIGINAL, 11/2/2007...			Flowing	
CODELL		1/4/2008	PR		DRILLING/COMPLETION - ORIGINAL, 11/2/2007...			Flowing	
CODELL		3/24/2008	PR		DRILLING/COMPLETION - ORIGINAL, 11/2/2007...			Flowing	
Perforation Data									
Linked Zone			Bnch/Stg	Entered Shot Total	Top (ftKB)		Btm (ftKB)		Date
NIOBRARA, ORIGINAL HOLE				48	6,578.00		6,590.00		12/18/2007
NIOBRARA, ORIGINAL HOLE				64	6,632.00		6,648.00		12/18/2007
CODELL, ORIGINAL HOLE				48	6,848.00		6,860.00		11/16/2007
Stimulation Intervals									
Zone					Start Date		Top (ftKB)		Btm (ftKB)
NIOBRARA, ORIGINAL HOLE					12/18/2007		6,578.0		6,648.0
CODELL, ORIGINAL HOLE					12/18/2007		6,848.0		6,860.0
Other In Hole									
Run Date		Des			Make		OD (in)	Top (ftKB)	Btm (ftKB)
Logs									
Date		Type				Top, MD (ftKB)		Btm, MD (ftKB)	
11/6/2007		COMPENSATED DENSITY				2,700.0		7,012.0	
11/6/2007		INDUCTION				640.0		7,032.0	
11/15/2007		CEMENT BOND				1,580.0		6,985.0	
Plug Back Total Depths									
Date		Type			Com				Depth (ftKB)
11/15/2007		FILL			DEPTH LOGGER ON CBL				6,987.0
3/24/2008		FILL			DRILL PLUG FREE, PUSH TO 6961', LEAVES 101' RATHOLE,....				6,961.0