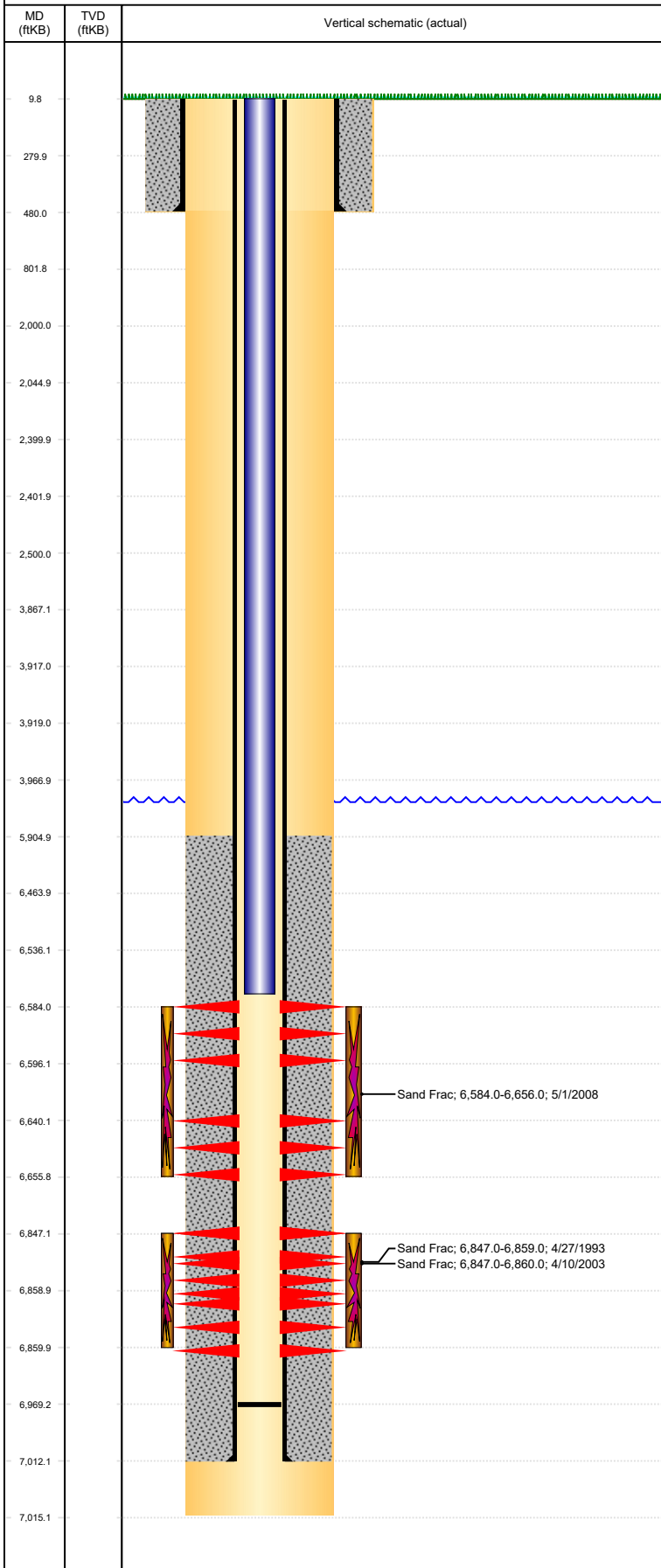


**Well Name: CODY WHITE D03-01**

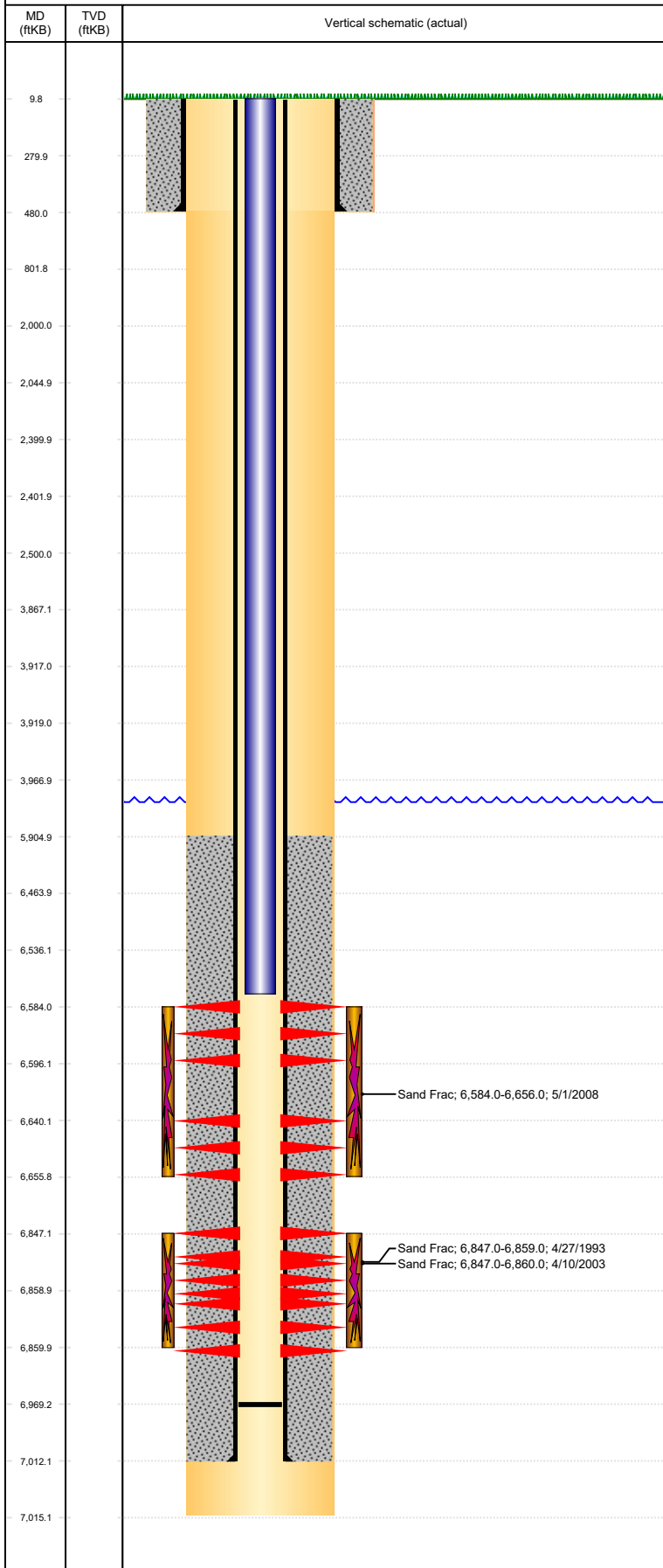
VERTICAL, ORIGINAL HOLE, 1/20/2022 12:19:54 PM



Well Header								
API 05-123-16940	Business Unit DJ BASIN	District 15	Well Config VERTICAL					
Original KB Elevation (ft) 4,704	KB - GL / MSL (ftKB) 10.00	Spud Date 4/16/1993	P & A Date					
Comment probable Nio breakthrough @ the 2112 clean bbl, 4/03								
Directions To Well WCR 40 & WCR 57, SOUTH TO THE ARCH. WEST 0.1, NORTH 0.3 INTO								
Congressional Location								
Quarter 3 NE	Quarter 4 NE	Section 3	Township 3	Twnshp N/S Dir N	Range 64	Range E/W Dir W		
Bottom Hole Legal Location								
Bottom Hole Legal Location								
Plug Back Total Depths								
Date	Depth (ftKB)	Method		Com				
4/27/1993	6,955.0	TUBING TALLY		ORIGINAL PBTD				
4/15/2008	6,694.0							
5/16/2008	6,620.0							
5/19/2008	6,969.0			109' OF RAT HOLE				
Wellbore Sections								
Section Des		Size (in)	Act Top, MD (ftKB)		Act Btm, MD (ftKB)			
SURFACE		12 1/4	10		480			
PRODUCTION		7 7/8	480		7,015			
Zone Statuses								
Zone Name	Status Date	Status	Fluid Type	Job	Prod Method			
CODELL	6/15/1993	PR		DRILLING/CO...				
CODELL	4/11/2003	PR		RE-FRAC, 4/10...				
CODELL	4/14/2008	SI		RECOMPLETI...				
CODELL	5/20/2008	PR		RECOMPLETI...				
NIOBRARA	5/2/2008	PR		RECOMPLETI...				
NIOBRARA	5/20/2008	PR		RECOMPLETI...				
				RECOMPLETI...				
Casing Strings								
Surface Casing, 480.0ftKB								
Casing Description	Run Date	OD (in)	Wt/Len (l...	Grade	Top, MD (ft...	MD (ftKB)		
Surface Casing	4/17/1993	8 5/8	24.00		10.0	480.0		
Production Casing, 7,012.0ftKB								
Casing Description	Run Date	OD (in)	Wt/Len (l...	Grade	Top, MD (ft...	MD (ftKB)		
Production Casing	4/22/1993	2 7/8	6.50	N-80	10.0	7,012.0		
Cement								
Description SURFACE CASING CEMENT				Top Depth (ftKB) 10.0		Bottom Depth (ftKB) 480.0		
Description PRODUCTION CASING CEMENT				Top Depth (ftKB) 5,905.0		Bottom Depth (ftKB) 7,012.0		
Tubing Strings								
Tubing Description	Run Date	String...	ID (in)	Wt (lb/ft)	Grade	Len (ft)	Set De...	
Tubing	4/19/2003	1 1/4		2.33		6,827.00		
Tubing Components								
Item Des	OD (in)	Wt (lb/ft)	Grade	Jts	Len (ft)	Btm (ftKB)	Btm (TVD) (ftKB)	
TUBING JOINTS	1 1/4	2.33		212	6,827.00	6,837.0		
Tubing Description	Run Date	String...	ID (in)	Wt (lb/ft)	Grade	Len (ft)	Set De...	
Tubing - Production	5/19/2008	1.66	1.38	2.33	J-55	6,565.54		
Tubing Components								
Item Des	OD (in)	Wt (lb/ft)	Grade	Jts	Len (ft)	Btm (ftKB)	Btm (TVD) (ftKB)	
Tubing	1.66	2.33	J-55	202	6,564.44	6,572.4		
Pump Seating Nipple	1.66			1	1.10	6,573.5		
Other In Hole								
Run Date	Des		Make		OD (in)	Top (ftKB)	Btm (ftKB)	Pr op R un ?
Logs								
Date	Type				Top, MD (ftKB)	Btm, MD (ftKB)		
4/22/1993	COMPENSATED DENSITY GAMMA RAY CALIPER				3,700.0	7,029.6		

**Well Name: CODY WHITE D03-01**

VERTICAL, ORIGINAL HOLE, 1/20/2022 12:19:54 PM



Logs					
Date		Type	Top, MD (ftKB)	Btm, MD (ftKB)	
4/22/1993		DUAL INDUCTION GUARD LOG	3,700.0	7,029.6	
4/26/1993		SONIC CEMENT BOND	5,800.0	6,953.0	
Perforation Data					
Linked Zone	Bnch/St g	Sum of Entered Shot Total	Top (ftKB)	Btm (ftKB)	Date
NIOBRARA, ORIGINAL HOLE	A	48	6,584.00	6,596.00	4/16/2008
NIOBRARA, ORIGINAL HOLE	B	56	6,640.00	6,656.00	4/16/2008
CODELL, ORIGINAL HOLE		48	6,847.00	6,859.00	4/27/1993
CODELL, ORIGINAL HOLE		56	6,847.00	6,860.00	4/1/2003
Total		208			
Stimulation Intervals					
Interval... 1	Start Date 4/27/1993	Primary Job Type DRILLING/COMPLETION - ORIGINAL		Zone CODELL, ORIGINAL HOLE	
Technical Result		Tech Result Details		Tech Result Note	
Comment					
Interval... 1	Start Date 4/10/2003	Primary Job Type RE-FRAC		Zone CODELL, ORIGINAL HOLE	
Technical Result		Tech Result Details		Tech Result Note	
Comment					
probable Nio breakthrough @ the 2112 clean bbl					
Interval... 1	Start Date 5/1/2008	Primary Job Type RECOMPLETION		Zone NIOBRARA, ORIGINAL HOLE	
Technical Result		Tech Result Details		Tech Result Note	
Success		According to Plan			
Comment					