

073 - 08/80



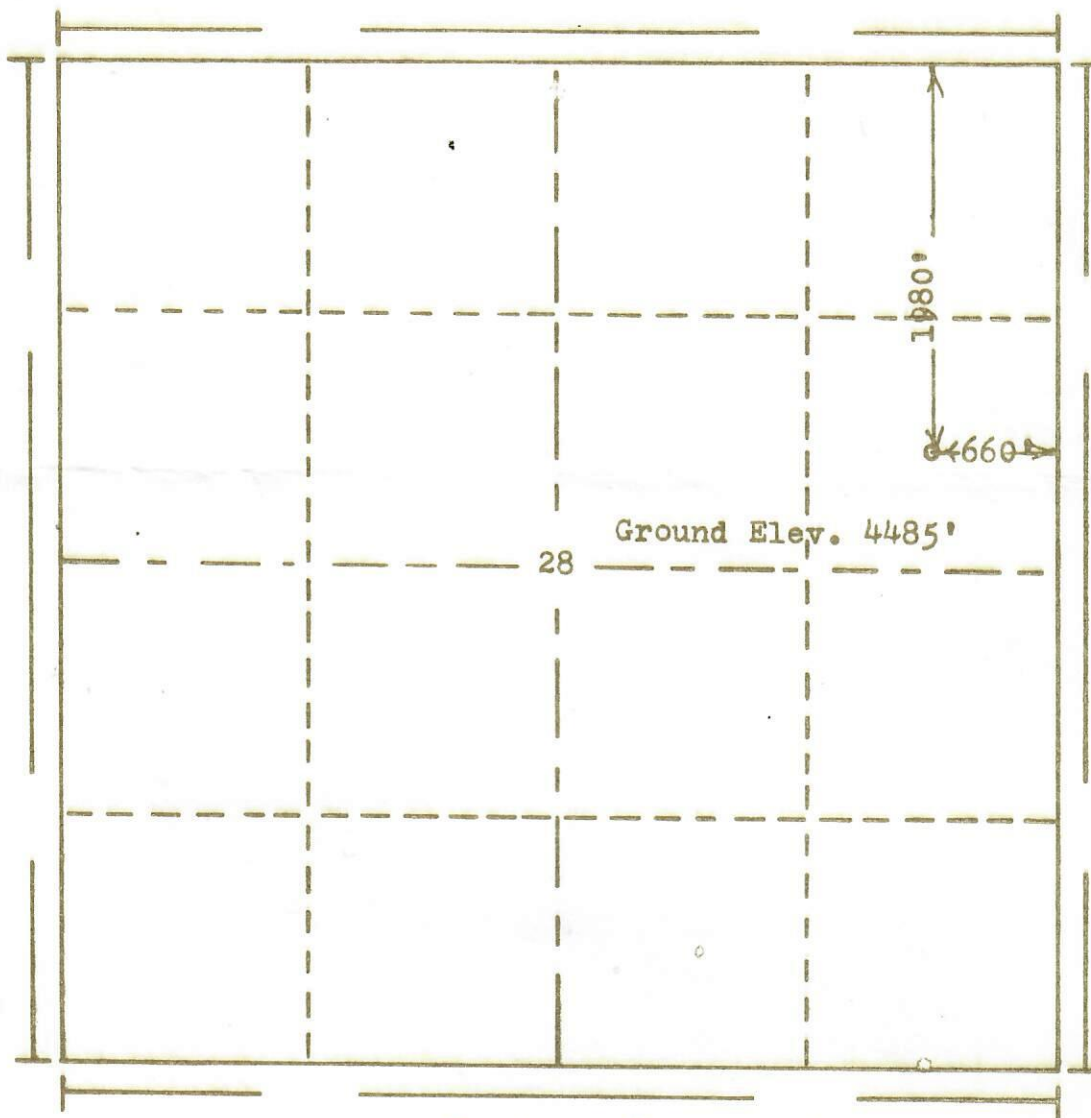
99999999

RECEIVED

OCT 20 1969

COLO. OIL & GAS CONS. COMM.

R. 52W



T.
12
N

Scale... 1" = 1000'

Powers Elevation Company, Inc. of Denver, Colorado
has in accordance with a request from Mr. Pfeifer
for W.R. Pfeifer

determined the location of No.2 Fehringer
to be CSE NE Section 28 Township 12N
Range 52W of the 6th Principal Meridian
Logan County, Colorado



00300252

I hereby certify that this plat is an
accurate representation of a correct
survey showing the location of

Date: 10-9-69

B. G. Hall
Licensed Land Surveyor No. 2853
State of Colorado