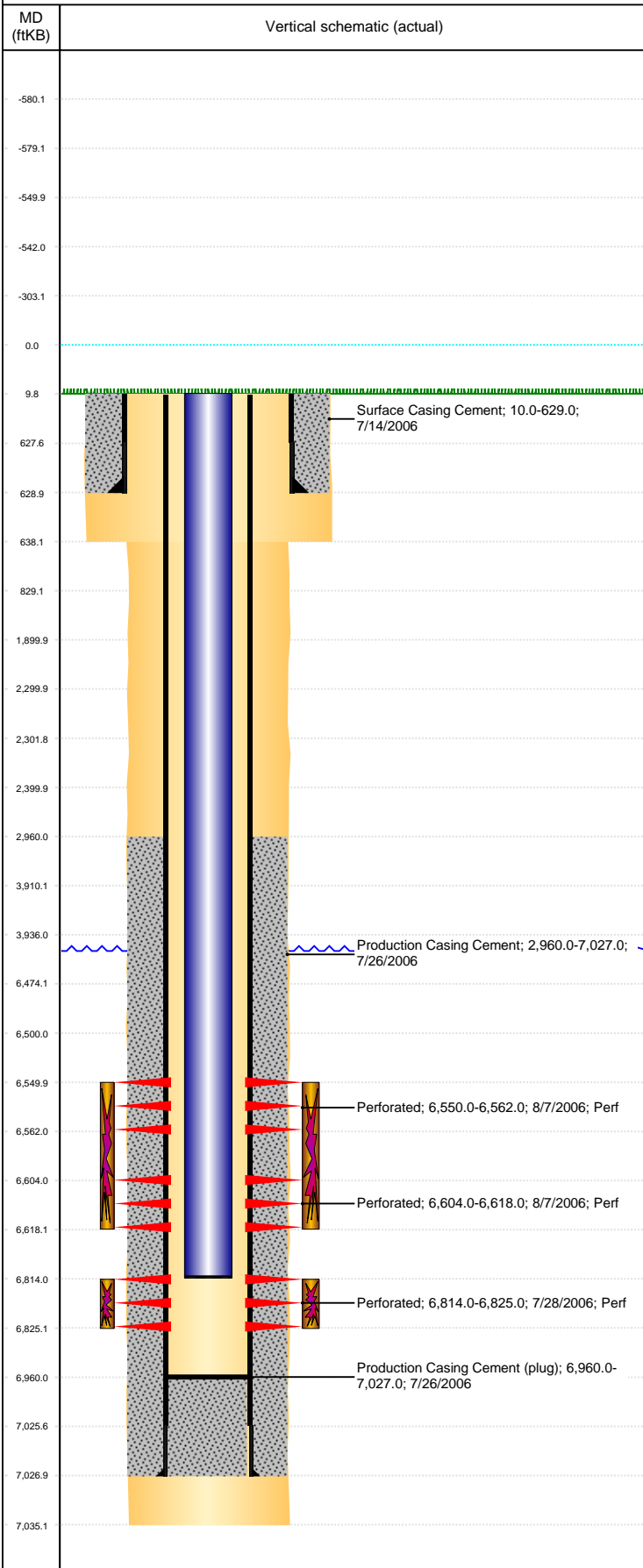


Well Name: STATE C36-15

VERTICAL, ORIGINAL HOLE, 1/19/2022 11:18:14 AM



Well Header									
API 05-123-17804		Business Unit DJ BASIN			District 15		Well Config VERTICAL		
KB - GL / MSL (ft... 10.00		Spud Date 7/13/2006		P & A Date		Well Production Status PR		SoRT No	
Comment									
Surface Location (Congressional)									
Qtr 3 SW	Qtr 4 SE	Section 36	Twنشp 4	Twنش... N	Range 64	Rng E/... W	Actual Latitude (°) 40.26300451	Actual Longitude (°) -104.49771421	
Wellbore Sections									
Section Des			Size (in)			Act Top, MD (ftKB)		Act Btm, MD (ftKB)	
SURFACE			12 1/4			10		638	
PRODUCTION			7 7/8			638		7,035	
Casing Strings									
Csg Des			Run Date		OD (in)	Wt/Len (lb/ft)	Grade	Top, MD (ftKB)	MD (ftKB)
Surface Casing			7/13/2006		8 5/8	24.00	J-55	10.0	629.0
Production			7/14/2006		4 1/2	11.60	M-80	10.0	7,027.0
Cement									
Des					Start Date		Top (ftKB)		Btm (ftKB)
Surface Casing Cement					7/14/2006		10.0		629.0
Production Casing Cement					7/26/2006		2,960.0		7,027.0
Zone Statuses									
Zone Name	Status Date	Status	Fluid Type	Job				Prod Method	
CODELL	8/22/2006	PR		DRILLING/COMPLETION - ORIGINAL, 7/13/2006...				Flowing	
CODELL	2/22/2010	PR							
NIOBRARA	5/9/2017	SI							
NIOBRARA	7/14/2017	PR							
Perforation Data									
Linked Zone		Bnch/Stg	Entered Shot Total	Top (ftKB)		Btm (ftKB)		Date	
NIOBRARA, ORIGINAL HOLE		A	72	6,550.00		6,562.00		8/7/2006	
NIOBRARA, ORIGINAL HOLE		B	84	6,604.00		6,618.00		8/7/2006	
CODELL, ORIGINAL HOLE			44	6,814.00		6,825.00		7/28/2006	
Stimulation Intervals									
Zone				Start Date		Top (ftKB)		Btm (ftKB)	
NIOBRARA, ORIGINAL HOLE				8/7/2006		6,550.0		6,618.0	
CODELL, ORIGINAL HOLE				8/7/2006		6,814.0		6,825.0	
Other In Hole									
Run Date	Des				Make	OD (in)	Top (ftKB)	Btm (ftKB)	
Logs									
Date		Type				Top, MD (ftKB)		Btm, MD (ftKB)	
7/18/2006		COMPENSATED DENSITY				2,500.0		7,015.0	
7/18/2006		INDUCTION				10.0		7,035.0	
7/26/2006		CBL/CCL/GR				2,798.0		6,958.0	
Plug Back Total Depths									
Date		Type		Com				Depth (ftKB)	
7/18/2006		FILL		FILL				6,982.0	
7/26/2006				DEPTH LOGGER				6,960.0	