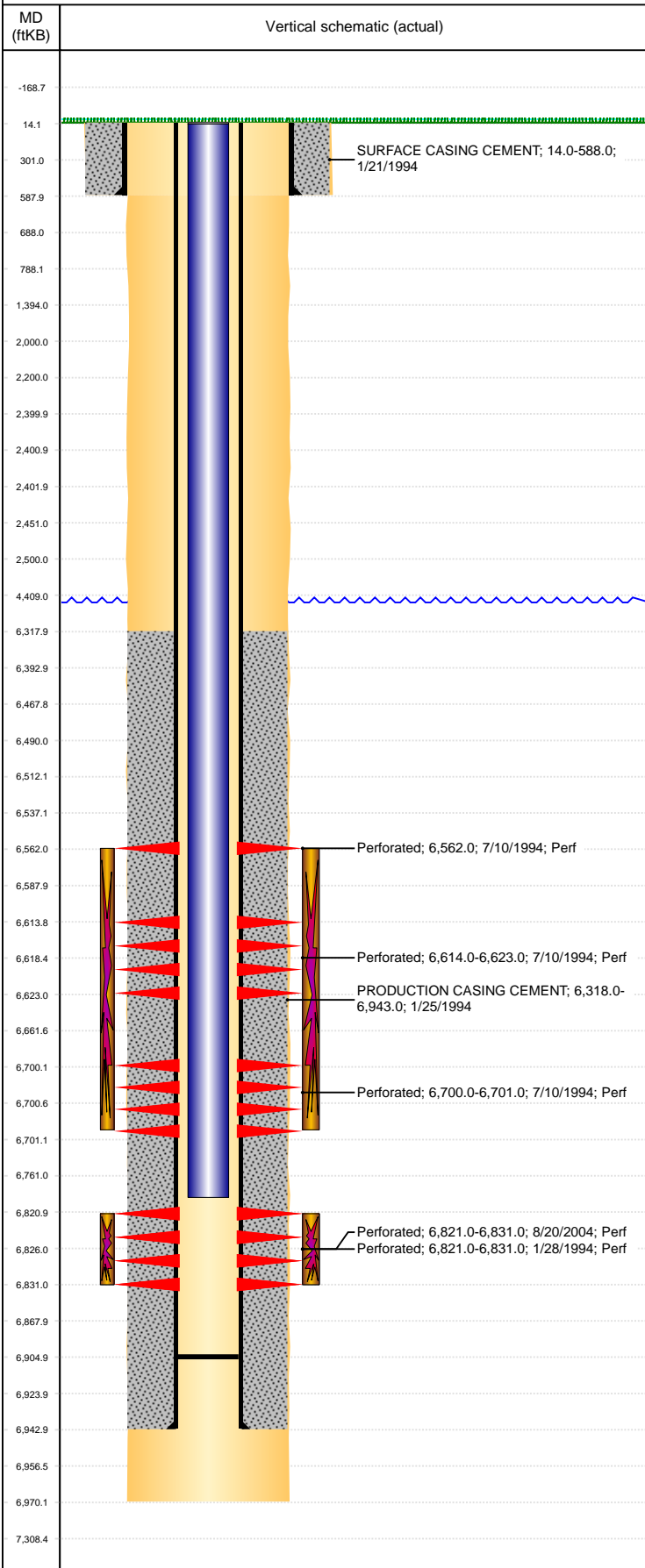


**Well Name: STATE 36-1614**

VERTICAL, ORIGINAL HOLE, 1/10/2022 2:34:36 PM



Well Header									
API 05-123-17805		Business Unit DJ BASIN			District 15		Well Config VERTICAL		
KB - GL / MSL (ft... 14.00		Spud Date 1/21/1994		P & A Date		Well Production Status PR			SoRT No
Comment st lse 81-6051									
Surface Location (Congressional)									
Qtr 3 SE	Qtr 4 SE	Section 36	Twnshp 4	Twnsh... N	Range 64	Rng E... W	Actual Latitude (°) 40.26302727	Actual Longitude (°) -104.49311181	
Wellbore Sections									
Section Des			Size (in)			Act Top, MD (ftKB)		Act Btm, MD (ftKB)	
SURFACE			12 1/4			14		588	
PRODUCTION			7 7/8			588		6,970	
Casing Strings									
Csg Des			Run Date		OD (in)	Wt/Len (lb/ft)	Grade	Top, MD (ftKB)	MD (ftKB)
Surface			1/21/1994		8 5/8	24.00		14.0	588.0
Production			1/25/1994		3 1/2	7.70	B-70	14.0	6,943.0
Cement									
Des					Start Date		Top (ftKB)		Btm (ftKB)
SURFACE CASING CEMENT					1/21/1994		14.0		588.0
PRODUCTION CASING CEMENT					1/25/1994		6,318.0		6,943.0
Zone Statuses									
Zone Name	Status Date	Status	Fluid Type	Job				Prod Method	
NIOBRARA	7/21/1994	PR	Gas	DRILLING/COMPLETION - ORIGINAL, 1/21/1994...				Flowing Flowing	
NIOBRARA	2/22/2010	PR							
CODELL	2/22/2010	PR							
CODELL	7/14/2017	PR							
Perforation Data									
Linked Zone		Bnch/Stg	Entered Shot Total	Top (ftKB)		Btm (ftKB)		Date	
NIOBRARA, ORIGINAL HOLE		A	1	6,562.00		6,562.00		7/10/1994	
NIOBRARA, ORIGINAL HOLE		B	8	6,614.00		6,623.00		7/10/1994	
NIOBRARA, ORIGINAL HOLE		C	2	6,700.00		6,701.00		7/10/1994	
CODELL, ORIGINAL HOLE			20	6,821.00		6,831.00		1/28/1994	
CODELL, ORIGINAL HOLE			40	6,821.00		6,831.00		8/20/2004	
Stimulation Intervals									
Zone				Start Date		Top (ftKB)		Btm (ftKB)	
NIOBRARA, ORIGINAL HOLE				7/13/1994		6,562.0		6,701.0	
CODELL, ORIGINAL HOLE				1/31/1994		6,821.0		6,831.0	
CODELL, ORIGINAL HOLE				8/30/2004		6,821.0		6,831.0	
Other In Hole									
Run Date		Des			Make		OD (in)	Top (ftKB)	Btm (ftKB)
Logs									
Date		Type					Top, MD (ftKB)		Btm, MD (ftKB)
1/26/1994		Compensated Density					4,000.0		6,968.0
1/26/1994		Induction					589.0		6,968.0
1/28/1994		Cement Bond					6,450.0		6,901.0
Plug Back Total Depths									
Date		Type		Com					Depth (ftKB)
1/25/1994		LATCH DOWN COLLAR							6,905.0