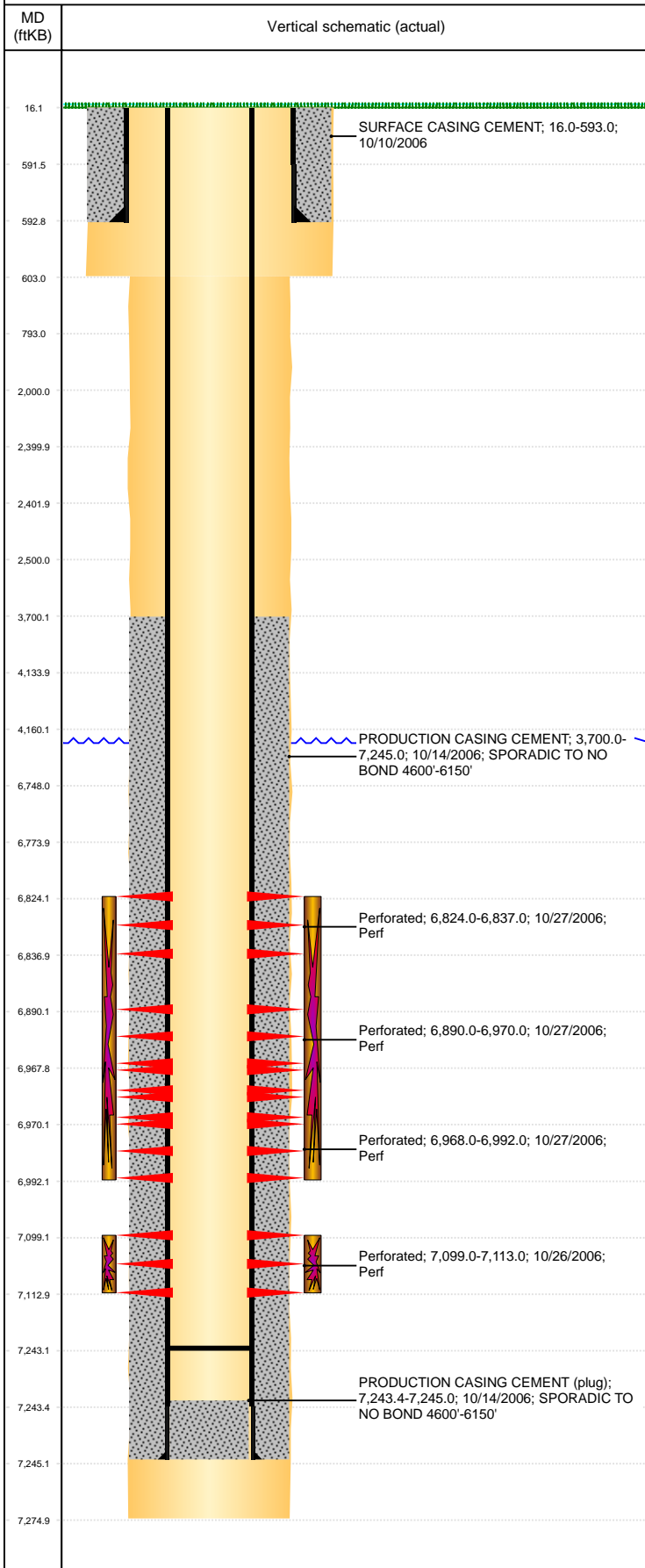


Well Name: JOHNSON 30-15

VERTICAL, Original Hole, 1/6/2022 12:44:22 PM



Well Header									
API 05-123-23936		Business Unit DJ BASIN			District 15		Well Config VERTICAL		
KB - GL / MSL (ft... 16.00		Spud Date 10/9/2006		P & A Date		Well Production Status PR			SoRT No
Comment									
Surface Location (Congressional)									
Qtr 3 NE	Qtr 4 NE	Section 30	Twnshp 4	Twنش... N	Range 64	Rng E/... W	Actual Latitude (°) 40.28697000		Actual Longitude (°) -104.58896000
Wellbore Sections									
Section Des			Size (in)			Act Top, MD (ftKB)		Act Btm, MD (ftKB)	
SURFACE			12 1/4			16		603	
PRODUCTION			7 7/8			603		7,275	
Casing Strings									
Csg Des			Run Date		OD (in)	Wt/Len (lb/ft)	Grade	Top, MD (ftKB)	MD (ftKB)
Surface			10/10/2006		8 5/8	24.00	J-55	16.0	593.0
Production			10/13/2006		4 1/2	11.60	M-80	16.0	7,245.0
Cement									
Des					Start Date		Top (ftKB)		Btm (ftKB)
SURFACE CASING CEMENT					10/10/2006		16.0		593.0
PRODUCTION CASING CEMENT					10/14/2006		3,700.0		7,245.0
Zone Statuses									
Zone Name		Status Date	Status	Fluid Type	Job			Prod Method	
NIOBRARA		11/6/2006	PR		DRILLING/COMPLETION - ORIGINAL, 10/9/2006...				
CODELL		11/6/2006	PR		DRILLING/COMPLETION - ORIGINAL, 10/9/2006...				
Perforation Data									
Linked Zone			Bnch/Stg	Entered Shot Total	Top (ftKB)		Btm (ftKB)		Date
NIOBRARA, Original Hole			A	26	6,824.00		6,837.00		10/27/2006
NIOBRARA, Original Hole			B	80	6,890.00		6,970.00		10/27/2006
NIOBRARA, Original Hole			C	60	6,968.00		6,992.00		10/27/2006
CODELL, Original Hole				56	7,099.00		7,113.00		10/26/2006
Stimulation Intervals									
Zone					Start Date		Top (ftKB)		Btm (ftKB)
NIOBRARA, Original Hole					10/27/2006		6,824.0		6,992.0
CODELL, Original Hole					10/26/2006		7,099.0		7,113.0
Other In Hole									
Run Date		Des			Make		OD (in)	Top (ftKB)	Btm (ftKB)
Logs									
Date		Type					Top, MD (ftKB)		Btm, MD (ftKB)
10/14/2006		COMPENSATED DENSITY/NEUTRON					3,800.0		7,248.0
10/14/2006		INDUCTION					593.0		7,268.0
10/25/2006		CEMENT BOND					3,600.0		7,218.0
10/27/2006		COLLAR CORRELATION LOG TO PERF NIO					6,910.0		7,055.0
Plug Back Total Depths									
Date		Type			Com				Depth (ftKB)
10/25/2006		FILL			DEPTH LOGGER ON CBL				7,220.0
12/18/2006		GUIDE SHOE			C/O TO PBTD				7,243.0