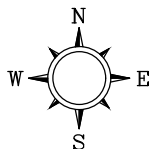


LATITUDE 40D 08M 23S NORTH  
 LONGITUDE 104D 57M 58S WEST  
 U.S. GEOLOGICAL SURVEY – 2019  
 7.5 MINUTE QUADRANGLE MAP  
 GOWANDA, COLORADO



GRANT-HURT 14H

FIGURE 1

SITE LOCATION MAP

40.13928, -104.96659  
 FIRESTONE, COLORADO

PROJECT NUMBER

APPROVED BY

CHECKED BY

DRAWN BY  
 ICD 07/14/2020

GRANT HURT



|                     |          |            |             |                |
|---------------------|----------|------------|-------------|----------------|
| FILENAME            | DRAWN BY | CHECKED BY | APPROVED BY | PROJECT NUMBER |
| GRANT_HURT_21Q2.DWG | ICD      | 5/20/2021  |             | GRANT HURT     |



N

W

E

S

0

10

20

SCALE IN FEET

LEGEND

TMW-1/BH-1

⊕

MONITORING WELL/BORING LOCATION

—x—x—x—x—

BERM

—x—x—x—x—

FENCE

NOTES

1. LOCATIONS ARE APPROXIMATE

2. COORDINATE SYSTEM: WGS 1984  
PROJECTION: TRANSVERSE MERCATOR

CRESTONE PEAK  
RESOURCES

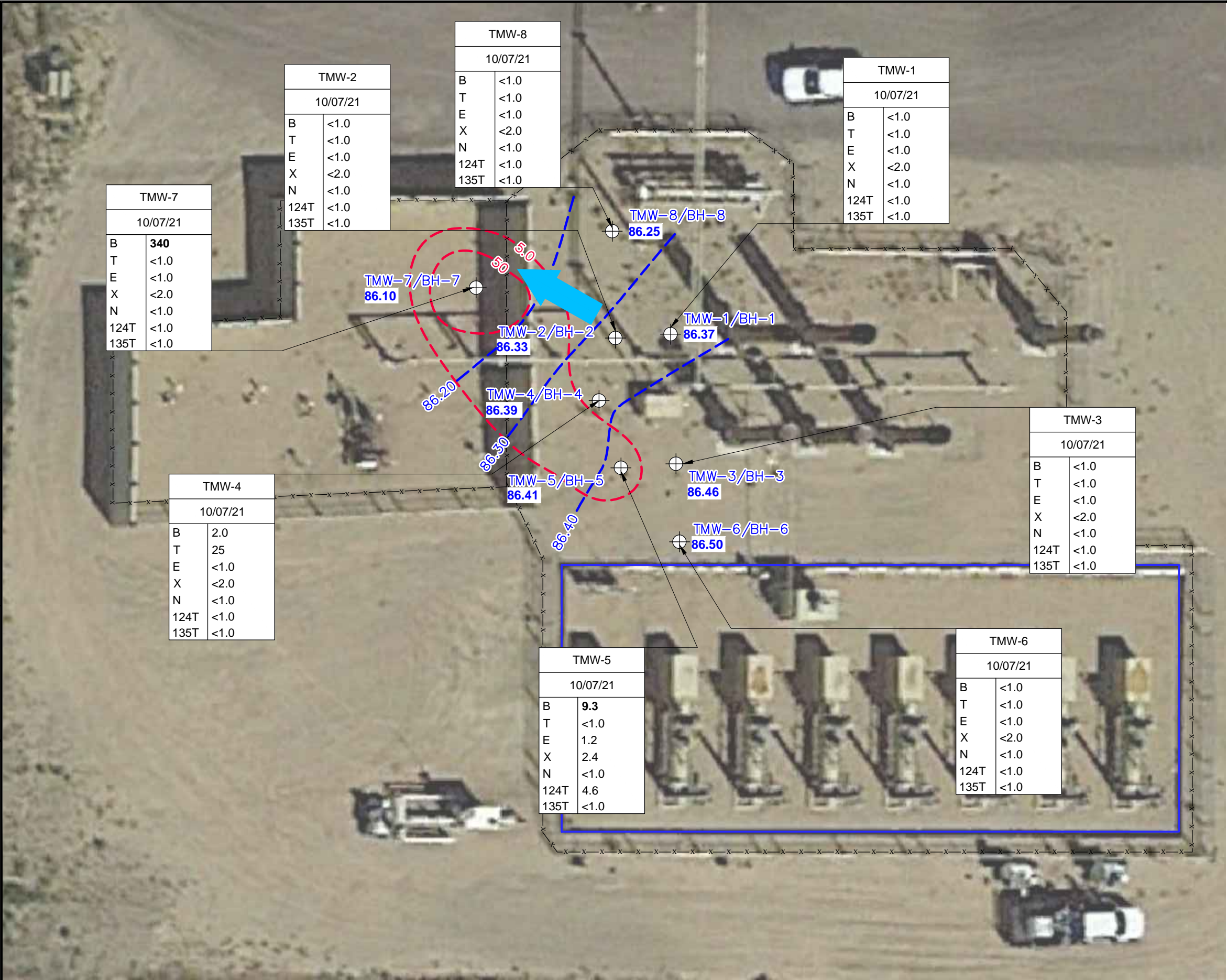
FIGURE 1

SITE MAP

GRANT-HURT 14H  
40.13928, -104.96659  
FIRESTONE, COLORADO

SOURCE: 2020 AERIAL PHOTOGRAPHY; © GOOGLE





N  
W  
E  
S

LEGEND

TMW-1/  
BH-1

MONITORING WELL/BORING LOCATION

—x—x—x—x—

BERM

—x—x—x—x—

FENCE

86.25

GROUNDWATER ELEVATION (FEET)

86.30

GROUNDWATER ELEVATION CONTOUR LINE (FEET)

CONTOUR INTERVAL=0.10 FEET

APPROXIMATE GROUNDWATER FLOW DIRECTION

5.0

BENZENE ISOCONCENTRATION CONTOUR LINE (µg/L)

B

BENZENE (µg/L)

T

TOLUENE (µg/L)

E

ETHYLBENZENE (µg/L)

X

TOTAL XYLENES (µg/L)

N

NAPHTHALENE (µg/L)

124T

1,2,3- TRIMETHYLBENZENE (µg/L)

135T

1,3,5- TRIMETHYLBENZENE (µg/L)

µg/L

MICROGRAMS PER LITER

<

NOT DETECTED ABOVE LIMIT NOTED

**BOLD VALUES INDICATE EXCEEDANCE OF APPLICABLE STANDARDS**

NOTES

1. LOCATIONS ARE APPROXIMATE

2. COORDINATE SYSTEM: WGS 1984  
PROJECTION: TRANSVERSE MERCATOR

0 10 20

SCALE IN FEET

CRESTONE PEAK  
RESOURCE

FIGURE □

GROUNDWATER MONITORING MAP

1 □ □ □ □ □ □ □ □

GRANT-HURT 14H  
40.13928, -104.96659  
FIRESTONE, COLORADO

**TABLE 2 - GROUNDWATER ELEVATION  
CRESTONE PEAK RESOURCES**

Grant-Hurt 14H

| Well ID | Date     | Top of Casing | Depth to Groundwater (feet) | Groundwater Elevation (feet) | Temperature (°C) | Conductivity (µS/cm) | Oxidation-Reduction Potential (mV) | Dissolved Oxygen (mg/L) | pH (SU) |
|---------|----------|---------------|-----------------------------|------------------------------|------------------|----------------------|------------------------------------|-------------------------|---------|
| TMW-1   | 6/23/20  | 100.00        | 10.76                       | 89.24                        | 19.91            | 1,586                | -102.30                            | 10.74                   | 7.37    |
|         | 9/28/20  |               | 13.29                       | 86.71                        | 18.70            | 1,422                | 27.00                              | 0.94                    | 14.34   |
|         | 11/19/20 |               | 14.14                       | 85.86                        | 16.74            | 1,379                | -62.70                             | 1.92                    | 7.31    |
|         | 1/13/21  | 100.00        | 14.67                       | 85.33                        | NM               | NM                   | NM                                 | NM                      | NM      |
|         | 4/23/21  |               | 14.50                       | 85.50                        | 12.08            | 1,523                | 4.80                               | 1.23                    | 6.73    |
|         | 7/7/21   |               | 11.22                       | 88.78                        | 15.92            | 1,461                | -18.50                             | 1.62                    | 6.99    |
|         | 10/7/21  |               | 13.63                       | 86.37                        | 18.87            | 1,848                | -44.50                             | 3.16                    | 6.51    |
| TMW-2   | 6/23/20  | 100.01        | 11.05                       | 88.96                        | 19.95            | 1,126                | -68.50                             | 5.83                    | 7.46    |
|         | 9/28/20  |               | 13.41                       | 86.60                        | 17.96            | 1,563                | 5.60                               | 0.81                    | 14.63   |
|         | 11/19/20 |               | 14.20                       | 85.81                        | 16.44            | 1,511                | -115.30                            | 1.25                    | 9.22    |
|         | 1/13/21  | 100.01        | 14.66                       | 85.35                        | 13.21            | NM                   | 19.70                              | 1.25                    | 6.84    |
|         | 4/23/21  |               | 14.52                       | 85.49                        | 13.30            | 1,632                | -11.10                             | 1.51                    | 6.86    |
|         | 7/7/21   |               | 11.49                       | 88.52                        | 16.25            | 1,288                | -22.90                             | 1.73                    | 7.08    |
|         | 10/7/21  |               | 13.68                       | 86.33                        | 18.38            | 1,706                | -80.70                             | 1.79                    | 6.67    |
| TMW-3   | 6/23/20  | 100.25        | 10.92                       | 89.33                        | 21.43            | 1,573                | -102.60                            | 2.12                    | 7.41    |
|         | 9/28/20  |               | 13.44                       | 86.81                        | 19.10            | 1,612                | -53.40                             | 1.35                    | 11.70   |
|         | 11/19/20 |               | 14.29                       | 85.96                        | 16.66            | 1,499                | -133.40                            | 1.10                    | 9.12    |
|         | 1/13/21  | 100.25        | 14.85                       | 85.40                        | 15.47            | NM                   | 21.20                              | 1.73                    | 7.03    |
|         | 4/23/21  |               | 14.62                       | 85.63                        | 15.72            | 1,583                | -14.70                             | 0.91                    | 6.92    |
|         | 7/7/21   |               | 11.40                       | 88.85                        | 16.25            | 1,220                | -29.20                             | 1.42                    | 7.18    |
|         | 10/7/21  |               | 13.79                       | 86.46                        | 19.44            | 1,605                | 85.00                              | 3.06                    | 6.53    |
| TMW-4   | 6/23/20  | 98.82         | 9.85                        | 88.97                        | 19.19            | 753                  | -68.60                             | 11.34                   | 7.16    |
|         | 9/28/20  |               | 12.14                       | 86.68                        | 19.14            | 1,545                | -102.20                            | 0.50                    | 15.37   |
|         | 11/19/20 |               | 12.95                       | 85.87                        | 17.53            | 1,408                | 171.80                             | 0.50                    | 8.74    |
|         | 1/13/21  | 98.82         | 13.42                       | 85.40                        | 13.68            | NM                   | 20.10                              | 8.81                    | 6.90    |
|         | 4/23/21  |               | 10.90                       | 87.92                        | 12.32            | 1,336                | -1.60                              | 1.57                    | 6.68    |
|         | 7/7/21   |               | 9.92                        | 88.90                        | 18.27            | 905                  | -22.70                             | 1.69                    | 7.06    |
|         | 10/7/21  |               | 12.43                       | 86.39                        | 18.57            | 1,260                | -143.30                            | 1.38                    | 6.54    |
| TMW-5   | 6/23/20  | 100.08        | 11.05                       | 89.03                        | 16.71            | 786                  | -134.80                            | 11.09                   | 7.48    |
|         | 9/28/20  |               | 13.33                       | 86.75                        | 17.91            | 1,540                | -31.90                             | 1.68                    | 13.56   |
|         | 11/19/20 |               | 14.17                       | 85.91                        | 16.60            | 1,530                | -172.60                            | 0.75                    | 8.97    |
|         | 1/13/21  | 100.08        | 14.73                       | 85.35                        | 12.34            | NM                   | 20.30                              | 2.14                    | 7.00    |
|         | 3/25/21  |               | 14.50                       | 85.58                        | 9.40             | 1,660                | -15.50                             | 1.30                    | 6.90    |
|         | 4/23/21  |               | 14.44                       | 85.64                        | 13.79            | 1,653                | -15.20                             | 2.51                    | 6.94    |
|         | 7/7/21   |               | 11.46                       | 88.62                        | 18.30            | 1,094                | -31.00                             | 1.28                    | 7.21    |
| TMW-6   | 12/29/20 | 100.06        | 14.45                       | 85.61                        | NM               | NM                   | NM                                 | NM                      | NM      |
|         | 1/13/21  |               | 14.62                       | 85.44                        | 14.14            | NM                   | 19.40                              | 1.33                    | 6.98    |
|         | 4/23/21  |               | 14.40                       | 85.66                        | 14.64            | 1,936                | -13.30                             | 1.85                    | 6.90    |
|         | 7/7/21   | 100.06        | 11.15                       | 88.91                        | 18.50            | 1,831                | -19.20                             | 1.34                    | 7.00    |
|         | 10/7/21  |               | 13.56                       | 86.50                        | 20.42            | 2,094                | 251.90                             | 3.54                    | 6.61    |
| TMW-7   | 12/29/20 | 101.06        | 15.75                       | 85.31                        | NM               | NM                   | NM                                 | NM                      | NM      |
|         | 1/13/21  |               | 15.19                       | 85.87                        | 15.49            | NM                   | 24.40                              | 1.95                    | 6.97    |
|         | 4/23/21  |               | 15.70                       | 85.36                        | 12.54            | 1,605                | -15.10                             | 1.80                    | 6.92    |
|         | 7/7/21   | 101.06        | 13.18                       | 87.88                        | 16.57            | 1,314                | 61.10                              | 1.70                    | 7.25    |
|         | 10/7/21  |               | 14.96                       | 86.10                        | 18.81            | 1,614                | -71.70                             | 3.65                    | 6.82    |
| TMW-8   | 12/29/20 | 100.07        | 14.75                       | 85.32                        | NM               | NM                   | NM                                 | NM                      | NM      |
|         | 1/13/21  |               | 14.85                       | 85.22                        | 13.46            | NM                   | 20.20                              | 2.58                    | 6.94    |
|         | 4/23/21  |               | 14.67                       | 85.40                        | 11.79            | 1,507                | -14.00                             | 1.50                    | 6.90    |
|         | 7/7/21   | 100.08        | 11.65                       | 88.43                        | 17.95            | 1,616                | -16.30                             | 1.55                    | 6.95    |
|         | 10/7/21  |               | 13.83                       | 86.25                        | 19.25            | 1,877                | -58.10                             | 3.16                    | 6.56    |

**NOTES:**

DES - Destroyed

NM - Not Measured

**TABLE 3 - GROUNDWATER ANALYTICAL RESULTS  
CRESTONE PEAK RESOURCES**

Grant-Hurt 14H

| Sample ID                      | Date     | Benzene<br>(µg/L) | Toluene<br>(µg/L) | Ethylbenzene<br>(µg/L) | Total Xylenes<br>(µg/L) | Napthalene<br>(µg/L) | 1,2,4-Trimethylbenzene<br>(µg/L) | 1,3,5-Trimethylbenzene<br>(µg/L) |
|--------------------------------|----------|-------------------|-------------------|------------------------|-------------------------|----------------------|----------------------------------|----------------------------------|
| <b>COGCC Table 915-1 Limit</b> |          | <b>5</b>          | <b>560</b>        | <b>700</b>             | <b>1,400</b>            | <b>140</b>           | <b>67</b>                        | <b>67</b>                        |
| TMW-1                          | 6/23/20  | <2.0              | <2.0              | <2.0                   | <6.0                    | <6.1                 | <6.2                             | <6.3                             |
|                                | 9/28/20  | <1.0              | <1.0              | <1.0                   | <3.0                    | <3.0                 | <3.0                             | <3.0                             |
|                                | 11/19/20 | <1.0              | <1.0              | <1.0                   | <3.0                    | <3.0                 | <3.0                             | <3.0                             |
|                                | 1/13/21  | <1.0              | <1.0              | <1.0                   | <3.0                    | <3.0                 | <3.0                             | <3.0                             |
|                                | 4/23/21  | <1.0              | <1.0              | <1.0                   | <3.0                    | <3.0                 | <3.0                             | <3.0                             |
|                                | 7/7/21   | 1.7               | <1.0              | <1.0                   | <2.0                    | <1.0                 | <1.0                             | <1.0                             |
|                                | 10/7/21  | <1.0              | <1.0              | <1.0                   | <2.0                    | <1.0                 | <1.0                             | <1.0                             |
| TMW-2                          | 6/23/20  | <b>287</b>        | <20.0             | <20.0                  | <60.0                   | <60.1                | <60.2                            | <60.3                            |
|                                | 9/28/20  | <1.0              | <1.0              | <1.0                   | <3.0                    | <3.0                 | <3.0                             | <3.0                             |
|                                | 11/19/20 | <1.0              | <1.0              | <1.0                   | <3.0                    | <3.0                 | <3.0                             | <3.0                             |
|                                | 1/13/21  | 1.72              | <1.0              | 1.59                   | <3.0                    | <3.0                 | <3.0                             | <3.0                             |
|                                | 4/23/21  | 3.09              | <1.0              | 1.01                   | <3.0                    | <3.0                 | <3.0                             | <3.0                             |
|                                | 7/7/21   | <b>110</b>        | 5.3               | 5.3                    | 4.3                     | <1.0                 | <1.0                             | 1.3                              |
|                                | 10/7/21  | <1.0              | <1.0              | <1.0                   | <2.0                    | <1.0                 | <1.0                             | <1.0                             |
| TMW-3                          | 6/23/20  | 2.59              | <1.0              | <1.0                   | <3.0                    | <3.0                 | <3.0                             | <3.0                             |
|                                | 9/28/20  | <1.0              | <1.0              | <1.0                   | <3.0                    | <3.0                 | <3.0                             | <3.0                             |
|                                | 11/19/20 | <1.0              | <1.0              | <1.0                   | <3.0                    | <3.0                 | <3.0                             | <3.0                             |
|                                | 1/13/21  | <1.0              | <1.0              | <1.0                   | <3.0                    | <3.0                 | <3.0                             | <3.0                             |
|                                | 4/23/21  | 1.25              | <1.0              | <1.0                   | <3.0                    | <3.0                 | <3.0                             | <3.0                             |
|                                | 7/7/21   | 1.4               | <1.0              | <1.0                   | <2.0                    | <1.0                 | <1.0                             | <1.0                             |
|                                | 10/7/21  | <1.0              | <1.0              | <1.0                   | <2.0                    | <1.0                 | <1.0                             | <1.0                             |
| TMW-4                          | 6/23/20  | 3.31              | <1.0              | <1.0                   | <3.0                    | <3.0                 | <3.0                             | <3.0                             |
|                                | 9/28/20  | 1.43              | <1.0              | <1.0                   | <3.0                    | <3.0                 | <3.0                             | <3.0                             |
|                                | 11/19/20 | <1.0              | <1.0              | <1.0                   | <3.0                    | <3.0                 | <3.0                             | <3.0                             |
|                                | 1/13/21  | 1.71              | <1.0              | <1.0                   | <3.0                    | <3.0                 | <3.0                             | <3.0                             |
|                                | 4/23/21  | <b>33.4</b>       | <1.0              | <1.0                   | <3.0                    | <3.0                 | <3.0                             | <3.0                             |
|                                | 7/7/21   | <b>8.4</b>        | <1.0              | <1.0                   | <2.0                    | <1.0                 | <1.0                             | <1.0                             |
|                                | 10/7/21  | 2.0               | 25                | <1.0                   | <2.0                    | <1.0                 | <1.0                             | <1.0                             |
| TMW-5                          | 6/23/20  | <2.0              | <2.0              | <2.0                   | <6.0                    | <6.1                 | <6.2                             | <6.3                             |
|                                | 9/28/20  | 2.45              | <1.0              | <1.0                   | <3.0                    | <3.1                 | <3.2                             | <3.3                             |
|                                | 11/19/20 | <b>13.3</b>       | <1.0              | 4.77                   | 3.11                    | 3.11                 | 3.11                             | 3.11                             |
|                                | 1/13/21  | <b>13.1</b>       | <1.0              | <2.0                   | 1.38                    | 1.38                 | 1.38                             | 1.38                             |
|                                | 3/25/21  | <b>25</b>         | <1.0              | 2                      | 5                       | 5                    | 5                                | 5                                |
|                                | 4/23/21  | <b>88.6</b>       | <1.0              | 5.06                   | 3.72                    | 3.72                 | 3.72                             | 3.72                             |
|                                | 7/7/21   | <b>31</b>         | <1.0              | 3.5                    | <2.0                    | <1.0                 | <1.0                             | 1.2                              |
| TMW-6                          | 10/7/21  | <b>9.3</b>        | <1.0              | 1.2                    | 2.4                     | <1.0                 | 4.6                              | <1.0                             |
|                                | 12/29/20 | <1.0              | <1.0              | <1.0                   | <3.0                    | <3.0                 | <3.0                             | <3.0                             |
|                                | 1/13/21  | <1.0              | <1.0              | <1.0                   | <3.0                    | <3.0                 | <3.0                             | <3.0                             |
|                                | 4/23/21  | <1.0              | <1.0              | <1.0                   | <3.0                    | <3.0                 | <3.0                             | <3.0                             |
|                                | 7/7/21   | 4.5               | <1.0              | <1.0                   | <2.0                    | <1.0                 | <1.0                             | 1.4                              |
| TMW-7                          | 10/7/21  | <1.0              | <1.0              | <1.0                   | <2.0                    | <1.0                 | <1.0                             | <1.0                             |
|                                | 12/29/20 | <1.0              | <1.0              | <1.0                   | <3.0                    | <3.0                 | <3.0                             | <3.0                             |
|                                | 1/13/21  | <1.0              | <1.0              | <1.0                   | <3.0                    | <3.0                 | <3.0                             | <3.0                             |
|                                | 4/23/21  | <b>16.6</b>       | <1.0              | <1.0                   | <3.0                    | <3.0                 | <3.0                             | <3.0                             |
|                                | 7/7/21   | <b>490</b>        | 32                | 5.0                    | 9.2                     | <1.0                 | <1.0                             | <1.0                             |
| TMW-8                          | 10/7/21  | <b>340</b>        | <1.0              | <1.0                   | <2.0                    | <1.0                 | <1.0                             | <1.0                             |
|                                | 12/29/20 | <1.0              | <1.0              | <1.0                   | <3.0                    | <3.0                 | <3.0                             | <3.0                             |
|                                | 1/13/21  | <1.0              | <1.0              | <1.0                   | <3.0                    | <3.0                 | <3.0                             | <3.0                             |
|                                | 4/23/21  | <1.0              | <1.0              | <1.0                   | <3.0                    | <3.0                 | <3.0                             | <3.0                             |
|                                | 7/7/21   | 2.7               | <1.0              | <1.0                   | <2.0                    | <1.0                 | <1.0                             | <1.0                             |
| TMW-8                          | 10/7/21  | <1.0              | <1.0              | <1.0                   | <2.0                    | <1.0                 | <1.0                             | <1.0                             |

**NOTES:**

µg/L - micrograms per liter

**BOLD** - indicates result exceeds the applicable standard

< - indicates result is less than the stated laboratory reporting limit

NS - Not Sampled

COGCC Table 915-1 - Colorado Oil and Gas Conservation Commission Table 915-1

Benzene, toluene, ethylbenzene, and total xylenes analyzed by EPA Method 8260B

**TABLE 3 - SAMPLE LOCATIONS  
CRESTONE PEAK RESOURCES**

**Grant-Hurt 14H**

| <b>MW ID</b> | <b>DD</b>                  |
|--------------|----------------------------|
| TMW-1        | 40.1401656, -104.9663381   |
| TMW-2        | 40.1401637, -104.9663772   |
| TMW-3        | 40.1400948, -104.9663348   |
| TMW-4        | 40.1401296, -104.9663892   |
| TMW-5        | 40.1400928, -104.9663739   |
| TMW-6        | 40.1400523°, -104.9663325° |
| TMW-7        | 40.1401916°, -104.9664761° |
| TMW-8        | 40.1402219°, -104.9663791° |

# Summit Scientific

---

4653 Table Mountain Drive, Golden, Colorado 80403

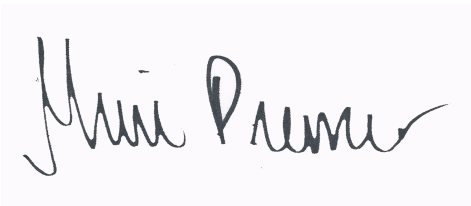
303.277.9310

October 19, 2021

Jeff Carlo  
Remington Technologies  
2307 W 8th St  
Loveland, CO 80537  
RE: Grant Hurt 14H  
Work Order #2110140

Enclosed are the results of analyses for samples received by Summit Scientific on 10/08/21 12:00. If you have any questions concerning this report, please feel free to contact me.

Sincerely,

A handwritten signature in black ink, reading "Muri Premer", is displayed on a light purple rectangular background.

Muri Premer For Paul Shrewsbury  
President



Remington Technologies  
2307 W 8th St  
Loveland CO, 80537

Project: Grant Hurt 14H

Project Number: [none]  
Project Manager: Jeff Carlo

**Reported:**  
10/19/21 11:49

### ANALYTICAL REPORT FOR SAMPLES

| Sample ID | Laboratory ID | Matrix | Date Sampled   | Date Received  |
|-----------|---------------|--------|----------------|----------------|
| TMW-1     | 2110140-01    | Water  | 10/07/21 15:05 | 10/08/21 12:00 |
| TMW-2     | 2110140-02    | Water  | 10/07/21 15:20 | 10/08/21 12:00 |
| TMW-3     | 2110140-03    | Water  | 10/07/21 14:40 | 10/08/21 12:00 |
| TMW-4     | 2110140-04    | Water  | 10/07/21 14:52 | 10/08/21 12:00 |
| TMW-5     | 2110140-05    | Water  | 10/07/21 14:46 | 10/08/21 12:00 |
| TMW-6     | 2110140-06    | Water  | 10/07/21 14:30 | 10/08/21 12:00 |
| TMW-7     | 2110140-07    | Water  | 10/07/21 15:30 | 10/08/21 12:00 |
| TMW-8     | 2110140-08    | Water  | 10/07/21 15:12 | 10/08/21 12:00 |

Summit Scientific

*The results in this report apply to the samples analyzed in accordance with the chain of custody document. This analytical report must be reproduced in its entirety.*



# Summit Scientific

S<sub>2</sub>

2110140

4653 Table Mountain Drive ♦ Golden, Colorado 80403  
303-277-9310 ♦ 303-374-5933 (f)

Page 1 of 1

Client: Remington Technologies, LLC.

Project Manager: Jeff Carlo

Address: 2307 W. 8th St.

E-Mail: Jcarlo@remingtontech.net; Ldent; Rmillunzi, christopher.rice@crestonepr.com

City/State/Zip: Loveland, CO 80537

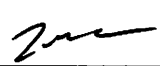
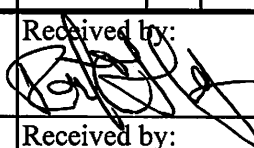
Phone: 970-278-1646

Project Name: Grant Hurt 14H

Sampler Name: Benito Arredondo

Project Number:

| ID | Sample Description | Date Sampled | Time Sampled | # of containers | Preservative |                  |      |       | Matrix |      |                |       | Analysis Requested |   |  |  |  |  |  |  | Special Instructions |
|----|--------------------|--------------|--------------|-----------------|--------------|------------------|------|-------|--------|------|----------------|-------|--------------------|---|--|--|--|--|--|--|----------------------|
|    |                    |              |              |                 | HCl          | HNO <sub>3</sub> | None | Other | Water  | Soil | Air-Canister # | Other | Table 915 Organics |   |  |  |  |  |  |  |                      |
| 1  | TMW-1              | 10/7/2021    | 15:05        | 3               | x            |                  |      |       | x      |      |                |       |                    | x |  |  |  |  |  |  |                      |
| 2  | TMW-2              | 10/7/2021    | 15:20        | 3               | x            |                  |      |       | x      |      |                |       |                    | x |  |  |  |  |  |  |                      |
| 3  | TMW-3              | 10/7/2021    | 14:40        | 3               | x            |                  |      |       | x      |      |                |       |                    | x |  |  |  |  |  |  |                      |
| 4  | TMW-4              | 10/7/2021    | 14:52        | 3               | x            |                  |      |       | x      |      |                |       |                    | x |  |  |  |  |  |  |                      |
| 5  | TMW-5              | 10/7/2021    | 14:46        | 3               | x            |                  |      |       | x      |      |                |       |                    | x |  |  |  |  |  |  |                      |
| 6  | TMW-6              | 10/7/2021    | 14:30        | 3               | x            |                  |      |       | x      |      |                |       |                    | x |  |  |  |  |  |  |                      |
| 7  | TMW-7              | 10/7/2021    | 15:30        | 3               | x            |                  |      |       | x      |      |                |       |                    | x |  |  |  |  |  |  |                      |
| 8  | TMW-8              | 10/7/2021    | 15:12        | 3               | x            |                  |      |       | x      |      |                |       |                    | x |  |  |  |  |  |  |                      |
| 9  |                    |              |              |                 |              |                  |      |       |        |      |                |       |                    |   |  |  |  |  |  |  |                      |
| 10 |                    |              |              |                 |              |                  |      |       |        |      |                |       |                    |   |  |  |  |  |  |  |                      |

|   |            |   |               |                        |                           |  |
|---|------------|---|---------------|------------------------|---------------------------|--|
| Relinquished by:  | Date/Time: | Received by:  | Date/Time:    | Turn Around Time       | (Check)                   | Notes:<br><br>Please bill to Crestone Peak Resources (CPR) |
|  10/8/21 1200 |            |  | 10-8-21 12:00 | Same Day               | 72 hours                  |  |
| Relinquished by:  | Date/Time: | Received by:  | Date/Time:    | 24 hours               | Standard                  |  |
|   |            |   |               | 48 hours               |                           |  |
| Relinquished by:  | Date/Time: | Received by:  | Date/Time:    | Sample Integrity:      | Temperature Upon Receipt: |  |
|   |            |   |               | Samples Intact: Yes No | 8.7                       |  |

S<sub>2</sub>

2110140

## Sample Receipt Checklist

S2 Work Order# \_\_\_\_\_


Client: Remington Tech LLC Client Project ID: Grant Hunt 14HShipped Via: ☐ H.D. ☒ P.U. ☐ FedEx ☐ UPS ☐ USPS ☐ Other \_\_\_\_\_ Airbill #: \_\_\_\_\_Matrix (check all that apply): ☐ Air ☐ Soil/Solid ☒ Water ☐ Other: \_\_\_\_\_  
(Describe)

|           |     |
|-----------|-----|
| Temp (°C) | 8.7 |
|-----------|-----|

Thermometer ID: 61857155-K

|  | Yes                                 | No                                  | N/A                                 | Comments (if any) |
|--|-------------------------------------|-------------------------------------|-------------------------------------|-------------------|
| If samples require cooling, was the temperature at 4°C +/- 2°C <sup>(1)</sup> ?<br>NOTE: If samples are delivered the same day of sampling, this requirement is met if there is evidence that cooling has begun.   | <input checked="" type="checkbox"/> | <input type="checkbox"/>            | <input type="checkbox"/>            | on ICE            |
| Were all samples received intact <sup>(1)</sup> ?  | <input checked="" type="checkbox"/> | <input type="checkbox"/>            | <input type="checkbox"/>            |                   |
| Was adequate sample volume provided <sup>(1)</sup> ?   | <input checked="" type="checkbox"/> | <input type="checkbox"/>            | <input type="checkbox"/>            |                   |
| If custody seals are present, are they intact <sup>(1)</sup> ?   | <input checked="" type="checkbox"/> | <input type="checkbox"/>            | <input type="checkbox"/>            |                   |
| Are samples with holding times due within 48 hours<br>sample due within 48 hours present?  | <input type="checkbox"/>            | <input checked="" type="checkbox"/> | <input type="checkbox"/>            |                   |
| Is a chain-of-custody (COC) form present and filled out completely <sup>(1)</sup> ?  | <input checked="" type="checkbox"/> | <input type="checkbox"/>            | <input type="checkbox"/>            |                   |
| Does the COC agree with the number and type of sample bottles received <sup>(1)</sup> ?  | <input checked="" type="checkbox"/> | <input type="checkbox"/>            | <input type="checkbox"/>            |                   |
| Do the sample IDs on the bottle labels match the COC <sup>(1)</sup> ?  | <input checked="" type="checkbox"/> | <input type="checkbox"/>            | <input type="checkbox"/>            |                   |
| Is the COC properly relinquished by the client w/ date and time recorded <sup>(1)</sup> ?  | <input checked="" type="checkbox"/> | <input type="checkbox"/>            | <input type="checkbox"/>            |                   |
| For volatiles in water – is there headspace present? <b>If yes, contact client and note in narrative.</b>  | <input type="checkbox"/>            | <input checked="" type="checkbox"/> | <input type="checkbox"/>            |                   |
| Are samples preserved that require preservation (excluding cooling) <sup>(1)</sup> ?<br>Note the type of preservative in the Comments column – HCl, H <sub>2</sub> SO <sub>4</sub> , NaOH, HNO <sub>3</sub> , etc. | <input checked="" type="checkbox"/> | <input type="checkbox"/>            | <input type="checkbox"/>            | HCl               |
| If samples are acid preserved for metals, is the pH ≤ 2 <sup>(1)</sup> ?<br>Record the pH in Comments.   | <input type="checkbox"/>            | <input type="checkbox"/>            | <input checked="" type="checkbox"/> |                   |
| If dissolved metals are requested, were samples field filtered?  | <input type="checkbox"/>            | <input type="checkbox"/>            | <input checked="" type="checkbox"/> |                   |
| Additional Comments (if any):  |                                     |                                     |                                     |                   |
|  |                                     |                                     |                                     |                   |

<sup>(1)</sup> If NO, then contact the client before proceeding with analysis and note in case narrative.

  
 Custodian Printed Name or Initials

10-8-21  
 Date/Time



Remington Technologies  
2307 W 8th St  
Loveland CO, 80537

Project: Grant Hurt 14H

Project Number: [none]  
Project Manager: Jeff Carlo

**Reported:**  
10/19/21 11:49

**TMW-1**  
**2110140-01 (Water)**

**Summit Scientific**

**Volatile Organic Compounds by EPA Method 8260B**

Date Sampled: **10/07/21 15:05**

| Analyte                | Result | Reporting |       | Dilution | Batch   | Prepared | Analyzed | Method    | Notes |
|------------------------|--------|-----------|-------|----------|---------|----------|----------|-----------|-------|
|                        |        | Limit     | Units |          |         |          |          |           |       |
| Benzene                | ND     | 1.0       | ug/l  | 1        | BEJ0182 | 10/11/21 | 10/12/21 | EPA 8260B |       |
| Toluene                | ND     | 1.0       | "     | "        | "       | "        | "        | "         |       |
| Ethylbenzene           | ND     | 1.0       | "     | "        | "       | "        | "        | "         |       |
| Xylenes (total)        | ND     | 2.0       | "     | "        | "       | "        | "        | "         |       |
| Naphthalene            | ND     | 1.0       | "     | "        | "       | "        | "        | "         |       |
| 1,2,4-Trimethylbenzene | ND     | 1.0       | "     | "        | "       | "        | "        | "         |       |
| 1,3,5-Trimethylbenzene | ND     | 1.0       | "     | "        | "       | "        | "        | "         |       |

Date Sampled: **10/07/21 15:05**

| Analyte                          | Result | Reporting |        | Dilution | Batch | Prepared | Analyzed | Method | Notes |
|----------------------------------|--------|-----------|--------|----------|-------|----------|----------|--------|-------|
|                                  |        | Limit     | Units  |          |       |          |          |        |       |
| Surrogate: 1,2-Dichloroethane-d4 |        | 99.0 %    | 23-173 |          | "     | "        | "        | "      |       |
| Surrogate: Toluene-d8            |        | 95.4 %    | 20-170 |          | "     | "        | "        | "      |       |
| Surrogate: 4-Bromofluorobenzene  |        | 100 %     | 21-167 |          | "     | "        | "        | "      |       |

Summit Scientific

*The results in this report apply to the samples analyzed in accordance with the chain of custody document. This analytical report must be reproduced in its entirety.*





Remington Technologies  
2307 W 8th St  
Loveland CO, 80537

Project: Grant Hurt 14H

Project Number: [none]  
Project Manager: Jeff Carlo

**Reported:**  
10/19/21 11:49

**TMW-2**  
**2110140-02 (Water)**

**Summit Scientific**

**Volatile Organic Compounds by EPA Method 8260B**

Date Sampled: **10/07/21 15:20**

| Analyte                | Result | Reporting |  | Units | Dilution | Batch   | Prepared | Analyzed | Method    | Notes |
|------------------------|--------|-----------|--|-------|----------|---------|----------|----------|-----------|-------|
|                        |        | Limit     |  |       |          |         |          |          |           |       |
| Benzene                | ND     | 1.0       |  | ug/l  | 1        | BEJ0182 | 10/11/21 | 10/12/21 | EPA 8260B |       |
| Toluene                | ND     | 1.0       |  | "     | "        | "       | "        | "        | "         |       |
| Ethylbenzene           | ND     | 1.0       |  | "     | "        | "       | "        | "        | "         |       |
| Xylenes (total)        | ND     | 2.0       |  | "     | "        | "       | "        | "        | "         |       |
| Naphthalene            | ND     | 1.0       |  | "     | "        | "       | "        | "        | "         |       |
| 1,2,4-Trimethylbenzene | ND     | 1.0       |  | "     | "        | "       | "        | "        | "         |       |
| 1,3,5-Trimethylbenzene | ND     | 1.0       |  | "     | "        | "       | "        | "        | "         |       |

Date Sampled: **10/07/21 15:20**

| Analyte                          | Result | Reporting |  | Units  | Dilution | Batch | Prepared | Analyzed | Method | Notes |
|----------------------------------|--------|-----------|--|--------|----------|-------|----------|----------|--------|-------|
|                                  |        | Limit     |  |        |          |       |          |          |        |       |
| Surrogate: 1,2-Dichloroethane-d4 |        | 88.4 %    |  | 23-173 |          | "     | "        | "        | "      |       |
| Surrogate: Toluene-d8            |        | 98.9 %    |  | 20-170 |          | "     | "        | "        | "      |       |
| Surrogate: 4-Bromofluorobenzene  |        | 98.1 %    |  | 21-167 |          | "     | "        | "        | "      |       |

Summit Scientific

*The results in this report apply to the samples analyzed in accordance with the chain of custody document. This analytical report must be reproduced in its entirety.*



Remington Technologies  
2307 W 8th St  
Loveland CO, 80537

Project: Grant Hurt 14H

Project Number: [none]  
Project Manager: Jeff Carlo

**Reported:**  
10/19/21 11:49

**TMW-3**  
**2110140-03 (Water)**

**Summit Scientific**

**Volatile Organic Compounds by EPA Method 8260B**

Date Sampled: **10/07/21 14:40**

| Analyte                | Result | Reporting | Units | Dilution | Batch   | Prepared | Analyzed | Method    | Notes |
|------------------------|--------|-----------|-------|----------|---------|----------|----------|-----------|-------|
|                        |        | Limit     |       |          |         |          |          |           |       |
| Benzene                | ND     | 1.0       | ug/l  | 1        | BEJ0182 | 10/11/21 | 10/12/21 | EPA 8260B |       |
| Toluene                | ND     | 1.0       | "     | "        | "       | "        | "        | "         |       |
| Ethylbenzene           | ND     | 1.0       | "     | "        | "       | "        | "        | "         |       |
| Xylenes (total)        | ND     | 2.0       | "     | "        | "       | "        | "        | "         |       |
| Naphthalene            | ND     | 1.0       | "     | "        | "       | "        | "        | "         |       |
| 1,2,4-Trimethylbenzene | ND     | 1.0       | "     | "        | "       | "        | "        | "         |       |
| 1,3,5-Trimethylbenzene | ND     | 1.0       | "     | "        | "       | "        | "        | "         |       |

Date Sampled: **10/07/21 14:40**

| Analyte                          | Result | Reporting | Units  | Dilution | Batch | Prepared | Analyzed | Method | Notes |
|----------------------------------|--------|-----------|--------|----------|-------|----------|----------|--------|-------|
|                                  |        | Limit     |        |          |       |          |          |        |       |
| Surrogate: 1,2-Dichloroethane-d4 |        | 99.6 %    | 23-173 |          | "     | "        | "        | "      |       |
| Surrogate: Toluene-d8            |        | 96.2 %    | 20-170 |          | "     | "        | "        | "      |       |
| Surrogate: 4-Bromofluorobenzene  |        | 97.1 %    | 21-167 |          | "     | "        | "        | "      |       |

Summit Scientific

*The results in this report apply to the samples analyzed in accordance with the chain of custody document. This analytical report must be reproduced in its entirety.*



Remington Technologies  
2307 W 8th St  
Loveland CO, 80537

Project: Grant Hurt 14H

Project Number: [none]  
Project Manager: Jeff Carlo

**Reported:**  
10/19/21 11:49

**TMW-4**  
**2110140-04 (Water)**

**Summit Scientific**

**Volatile Organic Compounds by EPA Method 8260B**

Date Sampled: **10/07/21 14:52**

| Analyte                | Result     | Reporting |  | Units | Dilution | Batch   | Prepared | Analyzed | Method    | Notes |
|------------------------|------------|-----------|--|-------|----------|---------|----------|----------|-----------|-------|
|                        |            | Limit     |  |       |          |         |          |          |           |       |
| <b>Benzene</b>         | <b>2.0</b> | 1.0       |  | ug/l  | 1        | BEJ0182 | 10/11/21 | 10/12/21 | EPA 8260B |       |
| <b>Toluene</b>         | <b>25</b>  | 1.0       |  | "     | "        | "       | "        | "        | "         |       |
| Ethylbenzene           | ND         | 1.0       |  | "     | "        | "       | "        | "        | "         |       |
| Xylenes (total)        | ND         | 2.0       |  | "     | "        | "       | "        | "        | "         |       |
| Naphthalene            | ND         | 1.0       |  | "     | "        | "       | "        | "        | "         |       |
| 1,2,4-Trimethylbenzene | ND         | 1.0       |  | "     | "        | "       | "        | "        | "         |       |
| 1,3,5-Trimethylbenzene | ND         | 1.0       |  | "     | "        | "       | "        | "        | "         |       |

Date Sampled: **10/07/21 14:52**

| Analyte                          | Result | Reporting |  | Units  | Dilution | Batch | Prepared | Analyzed | Method | Notes |
|----------------------------------|--------|-----------|--|--------|----------|-------|----------|----------|--------|-------|
|                                  |        | Limit     |  |        |          |       |          |          |        |       |
| Surrogate: 1,2-Dichloroethane-d4 |        | 100 %     |  | 23-173 |          | "     | "        | "        | "      |       |
| Surrogate: Toluene-d8            |        | 98.3 %    |  | 20-170 |          | "     | "        | "        | "      |       |
| Surrogate: 4-Bromofluorobenzene  |        | 95.7 %    |  | 21-167 |          | "     | "        | "        | "      |       |

Summit Scientific

*The results in this report apply to the samples analyzed in accordance with the chain of custody document. This analytical report must be reproduced in its entirety.*





Remington Technologies  
2307 W 8th St  
Loveland CO, 80537

Project: Grant Hurt 14H

Project Number: [none]  
Project Manager: Jeff Carlo

**Reported:**  
10/19/21 11:49

**TMW-5**  
**2110140-05 (Water)**

**Summit Scientific**

**Volatile Organic Compounds by EPA Method 8260B**

Date Sampled: **10/07/21 14:46**

| Analyte                       | Result     | Reporting |  | Units | Dilution | Batch   | Prepared | Analyzed | Method    | Notes |
|-------------------------------|------------|-----------|--|-------|----------|---------|----------|----------|-----------|-------|
|                               |            | Limit     |  |       |          |         |          |          |           |       |
| <b>Benzene</b>                | <b>9.3</b> | 1.0       |  | ug/l  | 1        | BEJ0182 | 10/11/21 | 10/12/21 | EPA 8260B |       |
| Toluene                       | ND         | 1.0       |  | "     | "        | "       | "        | "        | "         |       |
| <b>Ethylbenzene</b>           | <b>1.2</b> | 1.0       |  | "     | "        | "       | "        | "        | "         |       |
| <b>Xylenes (total)</b>        | <b>2.4</b> | 2.0       |  | "     | "        | "       | "        | "        | "         |       |
| Naphthalene                   | ND         | 1.0       |  | "     | "        | "       | "        | "        | "         |       |
| <b>1,2,4-Trimethylbenzene</b> | <b>4.6</b> | 1.0       |  | "     | "        | "       | "        | "        | "         |       |
| 1,3,5-Trimethylbenzene        | ND         | 1.0       |  | "     | "        | "       | "        | "        | "         |       |

Date Sampled: **10/07/21 14:46**

| Analyte                          | Result | Reporting |  | Units  | Dilution | Batch | Prepared | Analyzed | Method | Notes |
|----------------------------------|--------|-----------|--|--------|----------|-------|----------|----------|--------|-------|
|                                  |        | Limit     |  |        |          |       |          |          |        |       |
| Surrogate: 1,2-Dichloroethane-d4 |        | 100 %     |  | 23-173 |          | "     | "        | "        | "      |       |
| Surrogate: Toluene-d8            |        | 94.1 %    |  | 20-170 |          | "     | "        | "        | "      |       |
| Surrogate: 4-Bromofluorobenzene  |        | 99.8 %    |  | 21-167 |          | "     | "        | "        | "      |       |

Summit Scientific

The results in this report apply to the samples analyzed in accordance with the chain of custody document. This analytical report must be reproduced in its entirety.



Remington Technologies  
2307 W 8th St  
Loveland CO, 80537

Project: Grant Hurt 14H

Project Number: [none]  
Project Manager: Jeff Carlo

**Reported:**  
10/19/21 11:49

**TMW-6**  
**2110140-06 (Water)**

**Summit Scientific**

**Volatile Organic Compounds by EPA Method 8260B**

Date Sampled: **10/07/21 14:30**

| Analyte                | Result | Reporting |  | Units | Dilution | Batch   | Prepared | Analyzed | Method    | Notes |
|------------------------|--------|-----------|--|-------|----------|---------|----------|----------|-----------|-------|
|                        |        | Limit     |  |       |          |         |          |          |           |       |
| Benzene                | ND     | 1.0       |  | ug/l  | 1        | BEJ0182 | 10/11/21 | 10/12/21 | EPA 8260B |       |
| Toluene                | ND     | 1.0       |  | "     | "        | "       | "        | "        | "         |       |
| Ethylbenzene           | ND     | 1.0       |  | "     | "        | "       | "        | "        | "         |       |
| Xylenes (total)        | ND     | 2.0       |  | "     | "        | "       | "        | "        | "         |       |
| Naphthalene            | ND     | 1.0       |  | "     | "        | "       | "        | "        | "         |       |
| 1,2,4-Trimethylbenzene | ND     | 1.0       |  | "     | "        | "       | "        | "        | "         |       |
| 1,3,5-Trimethylbenzene | ND     | 1.0       |  | "     | "        | "       | "        | "        | "         |       |

Date Sampled: **10/07/21 14:30**

| Analyte                          | Result | Reporting |  | Units  | Dilution | Batch | Prepared | Analyzed | Method | Notes |
|----------------------------------|--------|-----------|--|--------|----------|-------|----------|----------|--------|-------|
|                                  |        | Limit     |  |        |          |       |          |          |        |       |
| Surrogate: 1,2-Dichloroethane-d4 |        | 106 %     |  | 23-173 |          | "     | "        | "        | "      |       |
| Surrogate: Toluene-d8            |        | 94.8 %    |  | 20-170 |          | "     | "        | "        | "      |       |
| Surrogate: 4-Bromofluorobenzene  |        | 114 %     |  | 21-167 |          | "     | "        | "        | "      |       |

Summit Scientific

*The results in this report apply to the samples analyzed in accordance with the chain of custody document. This analytical report must be reproduced in its entirety.*



Remington Technologies  
2307 W 8th St  
Loveland CO, 80537

Project: Grant Hurt 14H

Project Number: [none]  
Project Manager: Jeff Carlo

**Reported:**  
10/19/21 11:49

**TMW-7**  
**2110140-07 (Water)**

**Summit Scientific**

**Volatile Organic Compounds by EPA Method 8260B**

Date Sampled: **10/07/21 15:30**

| Analyte                | Result     | Reporting |  | Units | Dilution | Batch   | Prepared | Analyzed | Method    | Notes |
|------------------------|------------|-----------|--|-------|----------|---------|----------|----------|-----------|-------|
|                        |            | Limit     |  |       |          |         |          |          |           |       |
| <b>Benzene</b>         | <b>340</b> | 10        |  | ug/l  | 10       | BEJ0182 | 10/11/21 | 10/12/21 | EPA 8260B |       |
| Toluene                | ND         | 1.0       |  | "     | 1        | "       | "        | "        | "         |       |
| Ethylbenzene           | ND         | 1.0       |  | "     | "        | "       | "        | "        | "         |       |
| Xylenes (total)        | ND         | 2.0       |  | "     | "        | "       | "        | "        | "         |       |
| Naphthalene            | ND         | 1.0       |  | "     | "        | "       | "        | "        | "         |       |
| 1,2,4-Trimethylbenzene | ND         | 1.0       |  | "     | "        | "       | "        | "        | "         |       |
| 1,3,5-Trimethylbenzene | ND         | 1.0       |  | "     | "        | "       | "        | "        | "         |       |

Date Sampled: **10/07/21 15:30**

| Analyte                          | Result | Reporting |  | Units  | Dilution | Batch | Prepared | Analyzed | Method | Notes |
|----------------------------------|--------|-----------|--|--------|----------|-------|----------|----------|--------|-------|
|                                  |        | Limit     |  |        |          |       |          |          |        |       |
| Surrogate: 1,2-Dichloroethane-d4 |        | 98.0 %    |  | 23-173 |          | "     | "        | "        | "      |       |
| Surrogate: Toluene-d8            |        | 96.5 %    |  | 20-170 |          | "     | "        | "        | "      |       |
| Surrogate: 4-Bromofluorobenzene  |        | 101 %     |  | 21-167 |          | "     | "        | "        | "      |       |

Summit Scientific

*The results in this report apply to the samples analyzed in accordance with the chain of custody document. This analytical report must be reproduced in its entirety.*





Remington Technologies  
2307 W 8th St  
Loveland CO, 80537

Project: Grant Hurt 14H

Project Number: [none]  
Project Manager: Jeff Carlo

**Reported:**  
10/19/21 11:49

**TMW-8**  
**2110140-08 (Water)**

**Summit Scientific**

**Volatile Organic Compounds by EPA Method 8260B**

Date Sampled: **10/07/21 15:12**

| Analyte                | Result | Reporting |  | Units | Dilution | Batch   | Prepared | Analyzed | Method    | Notes |
|------------------------|--------|-----------|--|-------|----------|---------|----------|----------|-----------|-------|
|                        |        | Limit     |  |       |          |         |          |          |           |       |
| Benzene                | ND     | 1.0       |  | ug/l  | 1        | BEJ0182 | 10/11/21 | 10/12/21 | EPA 8260B |       |
| Toluene                | ND     | 1.0       |  | "     | "        | "       | "        | "        | "         |       |
| Ethylbenzene           | ND     | 1.0       |  | "     | "        | "       | "        | "        | "         |       |
| Xylenes (total)        | ND     | 2.0       |  | "     | "        | "       | "        | "        | "         |       |
| Naphthalene            | ND     | 1.0       |  | "     | "        | "       | "        | "        | "         |       |
| 1,2,4-Trimethylbenzene | ND     | 1.0       |  | "     | "        | "       | "        | "        | "         |       |
| 1,3,5-Trimethylbenzene | ND     | 1.0       |  | "     | "        | "       | "        | "        | "         |       |

Date Sampled: **10/07/21 15:12**

| Analyte                          | Result | Reporting |  | Units  | Dilution | Batch | Prepared | Analyzed | Method | Notes |
|----------------------------------|--------|-----------|--|--------|----------|-------|----------|----------|--------|-------|
|                                  |        | Limit     |  |        |          |       |          |          |        |       |
| Surrogate: 1,2-Dichloroethane-d4 |        | 104 %     |  | 23-173 |          | "     | "        | "        | "      |       |
| Surrogate: Toluene-d8            |        | 89.3 %    |  | 20-170 |          | "     | "        | "        | "      |       |
| Surrogate: 4-Bromofluorobenzene  |        | 134 %     |  | 21-167 |          | "     | "        | "        | "      |       |

Summit Scientific

*The results in this report apply to the samples analyzed in accordance with the chain of custody document. This analytical report must be reproduced in its entirety.*



Remington Technologies  
2307 W 8th St  
Loveland CO, 80537

Project: Grant Hurt 14H

Project Number: [none]  
Project Manager: Jeff Carlo

**Reported:**  
10/19/21 11:49

## Volatile Organic Compounds by EPA Method 8260B - Quality Control

### Summit Scientific

| Analyte | Reporting |       |       | Spike | Source |      | %REC   |     | RPD   |       |
|---------|-----------|-------|-------|-------|--------|------|--------|-----|-------|-------|
|         | Result    | Limit | Units | Level | Result | %REC | Limits | RPD | Limit | Notes |

#### Batch BEJ0182 - EPA 5030 Water MS

##### Blank (BEJ0182-BLK1)

Prepared: 10/11/21 Analyzed: 10/12/21

|                                  |      |     |      |      |  |      |        |  |  |  |
|----------------------------------|------|-----|------|------|--|------|--------|--|--|--|
| Benzene                          | ND   | 1.0 | ug/l |      |  |      |        |  |  |  |
| Toluene                          | ND   | 1.0 | "    |      |  |      |        |  |  |  |
| Ethylbenzene                     | ND   | 1.0 | "    |      |  |      |        |  |  |  |
| Xylenes (total)                  | ND   | 2.0 | "    |      |  |      |        |  |  |  |
| Naphthalene                      | ND   | 1.0 | "    |      |  |      |        |  |  |  |
| 1,2,4-Trimethylbenzene           | ND   | 1.0 | "    |      |  |      |        |  |  |  |
| 1,3,5-Trimethylbenzene           | ND   | 1.0 | "    |      |  |      |        |  |  |  |
| Surrogate: 1,2-Dichloroethane-d4 | 11.9 |     | "    | 13.3 |  | 89.2 | 23-173 |  |  |  |
| Surrogate: Toluene-d8            | 13.1 |     | "    | 13.3 |  | 98.2 | 20-170 |  |  |  |
| Surrogate: 4-Bromofluorobenzene  | 12.8 |     | "    | 13.3 |  | 95.6 | 21-167 |  |  |  |

##### LCS (BEJ0182-BS1)

Prepared: 10/11/21 Analyzed: 10/12/21

|                                  |      |     |      |      |  |      |        |  |  |  |
|----------------------------------|------|-----|------|------|--|------|--------|--|--|--|
| Benzene                          | 31.6 | 1.0 | ug/l | 33.3 |  | 94.9 | 51-132 |  |  |  |
| Toluene                          | 38.8 | 1.0 | "    | 33.3 |  | 116  | 51-138 |  |  |  |
| Ethylbenzene                     | 42.0 | 1.0 | "    | 33.3 |  | 126  | 58-146 |  |  |  |
| m,p-Xylene                       | 80.8 | 2.0 | "    | 66.7 |  | 121  | 57-144 |  |  |  |
| o-Xylene                         | 41.1 | 1.0 | "    | 33.3 |  | 123  | 53-146 |  |  |  |
| Naphthalene                      | 37.4 | 1.0 | "    | 33.3 |  | 112  | 70-130 |  |  |  |
| 1,2,4-Trimethylbenzene           | 39.8 | 1.0 | "    | 33.3 |  | 119  | 70-130 |  |  |  |
| 1,3,5-Trimethylbenzene           | 38.5 | 1.0 | "    | 33.3 |  | 115  | 70-130 |  |  |  |
| Surrogate: 1,2-Dichloroethane-d4 | 12.9 |     | "    | 13.3 |  | 96.5 | 23-173 |  |  |  |
| Surrogate: Toluene-d8            | 13.1 |     | "    | 13.3 |  | 98.3 | 20-170 |  |  |  |
| Surrogate: 4-Bromofluorobenzene  | 12.3 |     | "    | 13.3 |  | 92.1 | 21-167 |  |  |  |

##### Matrix Spike (BEJ0182-MS1)

Source: 2110107-01

Prepared: 10/11/21 Analyzed: 10/12/21

|                                  |      |     |      |      |      |      |        |  |  |  |
|----------------------------------|------|-----|------|------|------|------|--------|--|--|--|
| Benzene                          | 34.1 | 1.0 | ug/l | 33.3 | ND   | 102  | 34-141 |  |  |  |
| Toluene                          | 39.3 | 1.0 | "    | 33.3 | ND   | 118  | 27-151 |  |  |  |
| Ethylbenzene                     | 42.3 | 1.0 | "    | 33.3 | ND   | 127  | 29-160 |  |  |  |
| m,p-Xylene                       | 82.4 | 2.0 | "    | 66.7 | ND   | 124  | 20-166 |  |  |  |
| o-Xylene                         | 41.7 | 1.0 | "    | 33.3 | ND   | 125  | 33-159 |  |  |  |
| Naphthalene                      | 37.5 | 1.0 | "    | 33.3 | 1.01 | 109  | 70-130 |  |  |  |
| 1,2,4-Trimethylbenzene           | 40.4 | 1.0 | "    | 33.3 | ND   | 121  | 70-130 |  |  |  |
| 1,3,5-Trimethylbenzene           | 39.1 | 1.0 | "    | 33.3 | ND   | 117  | 70-130 |  |  |  |
| Surrogate: 1,2-Dichloroethane-d4 | 13.3 |     | "    | 13.3 |      | 99.6 | 23-173 |  |  |  |
| Surrogate: Toluene-d8            | 13.1 |     | "    | 13.3 |      | 98.6 | 20-170 |  |  |  |
| Surrogate: 4-Bromofluorobenzene  | 12.4 |     | "    | 13.3 |      | 92.9 | 21-167 |  |  |  |

Summit Scientific

The results in this report apply to the samples analyzed in accordance with the chain of custody document. This analytical report must be reproduced in its entirety.



Remington Technologies  
2307 W 8th St  
Loveland CO, 80537

Project: Grant Hurt 14H

Project Number: [none]  
Project Manager: Jeff Carlo

**Reported:**  
10/19/21 11:49

## Volatile Organic Compounds by EPA Method 8260B - Quality Control

### Summit Scientific

| Analyte | Reporting |       |       | Spike | Source |      | %REC   |     | RPD   |       |
|---------|-----------|-------|-------|-------|--------|------|--------|-----|-------|-------|
|         | Result    | Limit | Units | Level | Result | %REC | Limits | RPD | Limit | Notes |

#### Batch BEJ0182 - EPA 5030 Water MS

| Matrix Spike Dup (BEJ0182-MSD1)  | Source: 2110107-01 |     |      | Prepared: 10/11/21 Analyzed: 10/12/21 |      |      |        |        |    |  |
|----------------------------------|--------------------|-----|------|---------------------------------------|------|------|--------|--------|----|--|
| Benzene                          | 33.0               | 1.0 | ug/l | 33.3                                  | ND   | 99.0 | 34-141 | 3.43   | 30 |  |
| Toluene                          | 39.0               | 1.0 | "    | 33.3                                  | ND   | 117  | 27-151 | 0.793  | 30 |  |
| Ethylbenzene                     | 42.2               | 1.0 | "    | 33.3                                  | ND   | 127  | 29-160 | 0.331  | 30 |  |
| m,p-Xylene                       | 81.1               | 2.0 | "    | 66.7                                  | ND   | 122  | 20-166 | 1.58   | 30 |  |
| o-Xylene                         | 41.7               | 1.0 | "    | 33.3                                  | ND   | 125  | 33-159 | 0.0240 | 30 |  |
| Naphthalene                      | 41.3               | 1.0 | "    | 33.3                                  | 1.01 | 121  | 70-130 | 9.68   | 30 |  |
| 1,2,4-Trimethylbenzene           | 40.1               | 1.0 | "    | 33.3                                  | ND   | 120  | 70-130 | 0.745  | 30 |  |
| 1,3,5-Trimethylbenzene           | 39.0               | 1.0 | "    | 33.3                                  | ND   | 117  | 70-130 | 0.282  | 30 |  |
| Surrogate: 1,2-Dichloroethane-d4 | 14.4               |     | "    | 13.3                                  |      | 108  | 23-173 |        |    |  |
| Surrogate: Toluene-d8            | 13.0               |     | "    | 13.3                                  |      | 97.8 | 20-170 |        |    |  |
| Surrogate: 4-Bromofluorobenzene  | 12.4               |     | "    | 13.3                                  |      | 92.6 | 21-167 |        |    |  |

Summit Scientific

The results in this report apply to the samples analyzed in accordance with the chain of custody document. This analytical report must be reproduced in its entirety.





Remington Technologies  
2307 W 8th St  
Loveland CO, 80537

Project: Grant Hurt 14H

Project Number: [none]  
Project Manager: Jeff Carlo

**Reported:**  
10/19/21 11:49

### Notes and Definitions

|     |  |
|-----|--|
| DET | Analyte DETECTED                                     |
| ND  | Analyte NOT DETECTED at or above the reporting limit |
| NR  | Not Reported   |
| dry | Sample results reported on a dry weight basis        |
| RPD | Relative Percent Difference                          |