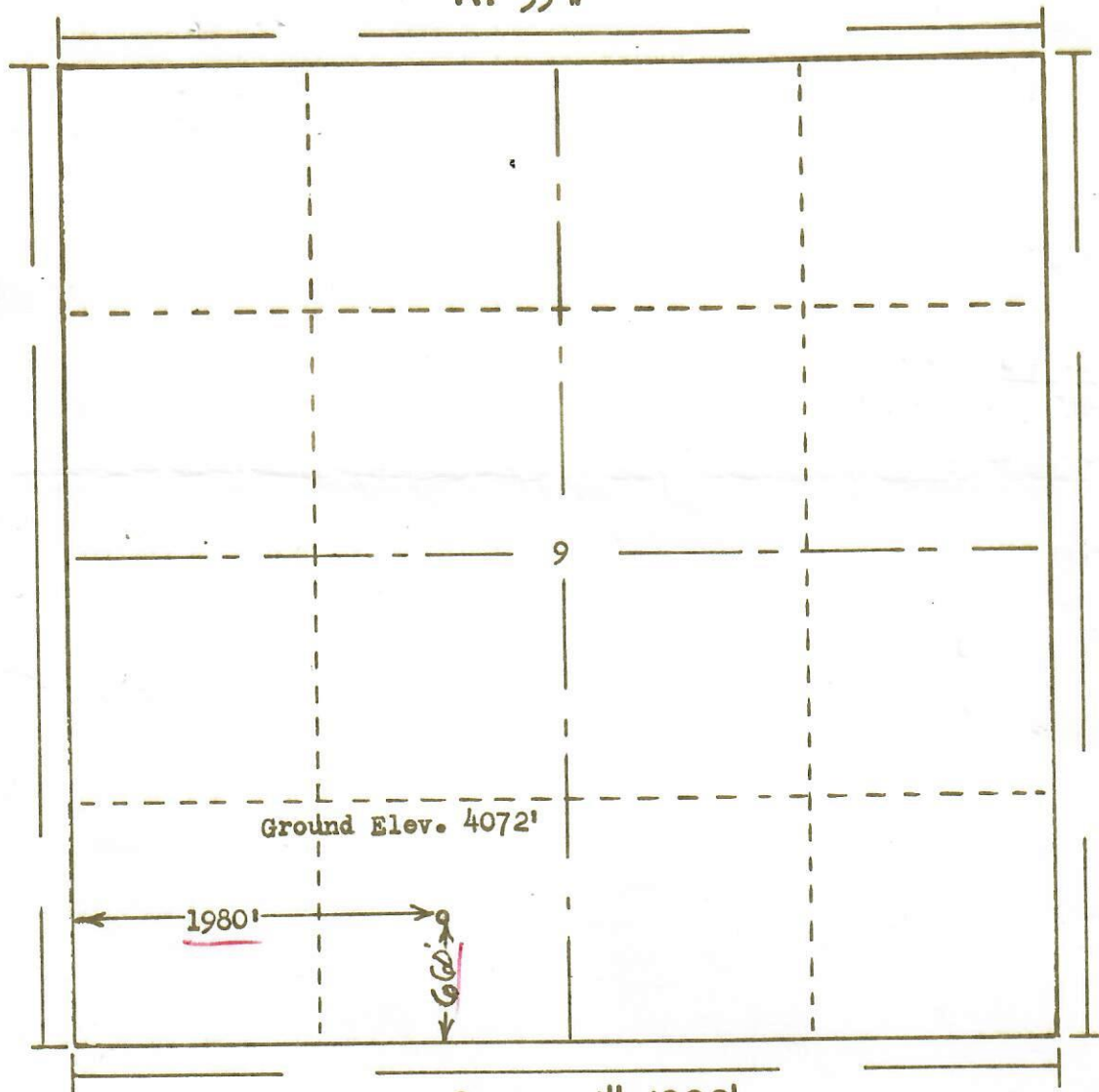




00238392

R. 53 W



T.
9
N

Scale ... 1" = 1000'

Powers Surveyors, Inc. of Denver, Colorado
has in accordance with a request from Mr. Swedlund
for **TOLTEK DRILLING & LEE SWEDLUND** determined the
Location of No.1 Whitaker
to be Q SE SW Section 9 Township 9 North
Range 53 West of the 6th Principal Meridian
Logan County, Colorado

I hereby certify that this plat is an
accurate representation of a correct
survey showing the location of

RECEIVED
SEP 11 1964
OIL & GAS
CONSERVATION COMMISSION

64 397

9-1-64

Billy J. Holloway
Licensed Land Surveyor No. 2853
State of Colorado