

Foundation Energy Management LLC, Prather 22-12  
125-07893

Inspection #688311753

12/21/2021

Reinspection

FOUNDATION ENERGY  
PRATHER No. 11-12  
W NW SEC. 12-1S-45W  
1/4 MILE S OF ROADS  
AA & 35 & E INTO  
YUMA COUNTY, CO  
IN CASE OF EMERGENCY CALL 911  
1-866-767-3600

FOUNDATION ENERGY  
PRATHER No. 21-12  
NE NW SEC. 12-1S-45W  
1/4 MILE S OF ROADS  
AA & 35 & E INTO  
YUMA COUNTY, CO  
IN CASE OF EMERGENCY CALL 911  
1-866-767-3600

FOUNDATION ENERGY MANAGEMENT, LLC  
PRATHER 12-12  
SWNW Sec. 12-T1N-R45W  
Co. Rd. AA & 35, 1/4 Mi S. E into  
Yuma County, CO  
970-848-0331  
24 HOUR EMERGENCY CALL  
1-866-767-3600

FOUNDATION ENERGY MANAGEMENT, LLC  
PRATHER 22-12  
SENEW Sec. 12-T1N-R45W  
Co. Rd. AA & 35, 1/4 Mi S. E into  
Yuma County, CO  
970-848-0331  
24 HOUR EMERGENCY CALL  
1-866-767-3600

Colorado Oil and Gas Conservation Commission  
40.07308, -102.36013, 3704.1ft, 102°  
12/21/2021 01:35:20 PM



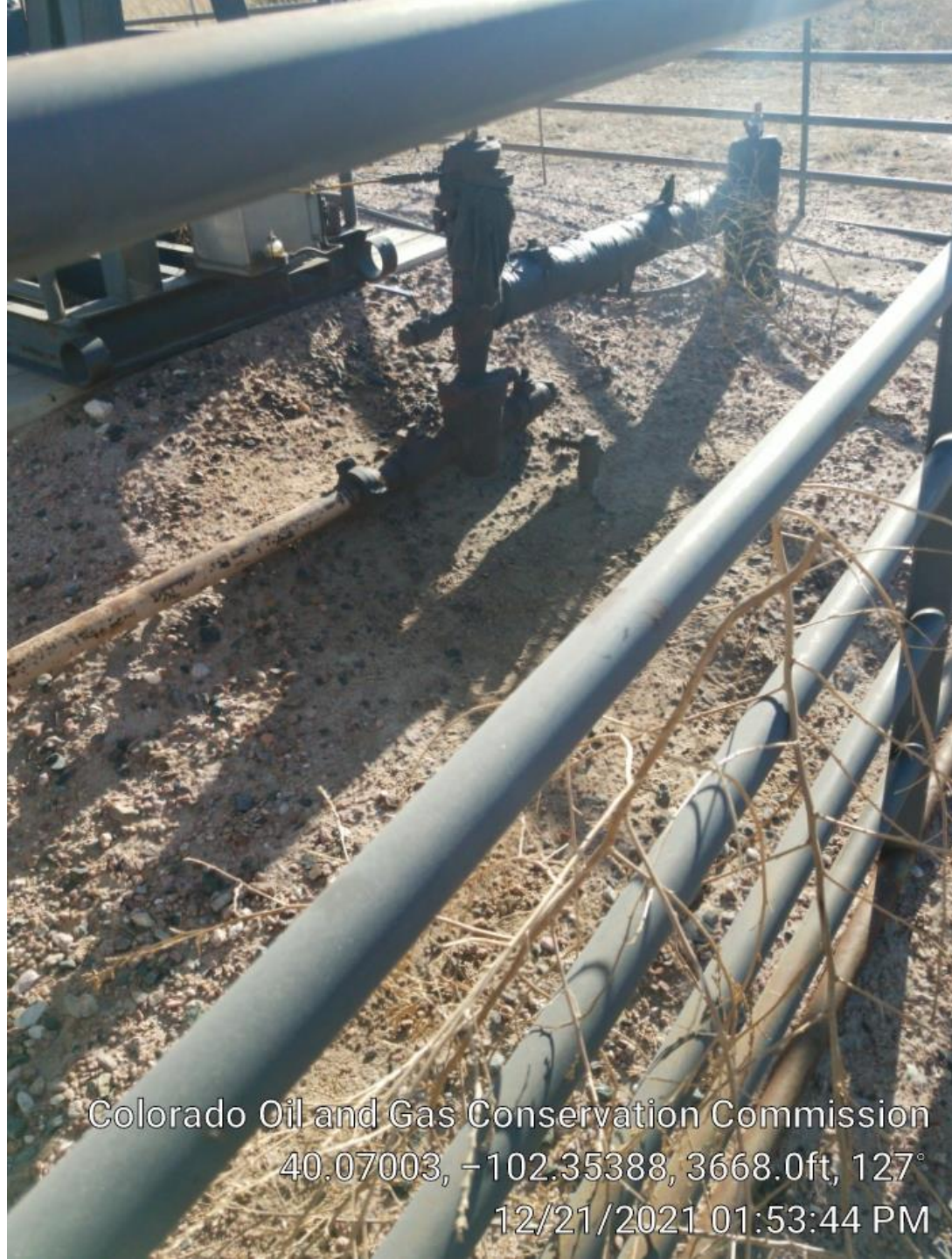


Colorado Oil and Gas Conservation Commission  
40.07944, -102.23351, 124°  
12/21/2021 01:53:35 PM



Colorado Oil and Gas Conservation Commission  
40.07003, -102.35386, 3664.7ft, 124°  
12/21/2021 01:53:41 PM





Colorado Oil and Gas Conservation Commission  
40.07003, -102.35388, 3668.0ft, 127°  
12/21/2021 01:53:44 PM



Colorado Oil and Gas Conservation Commission  
40.07005, -102.35385, 3668.0ft, 355°  
12/21/2021 01:54:32 PM





Colorado Oil and Gas Conservation Commission  
40.07005, -102.35385, 3671.3ft, 25°  
12/21/2021 01:54:36 PM

The image shows a single, rectangular piece of aged, yellowed paper. It is held by a black strap or cord at the top. The paper is heavily stained, particularly with a large, dark, irregular mark near the top left corner. The text on the paper is mostly illegible due to fading and staining. There are some faint, handwritten markings and a small, dark, irregular mark near the top left corner. The paper appears to be a document or a photograph that has been damaged or is very old.

Colorado Oil and Gas Conservation Commission  
40.07005, -102.35385, 3671.3ft, 2°  
12/21/2021 01:54:39 PM