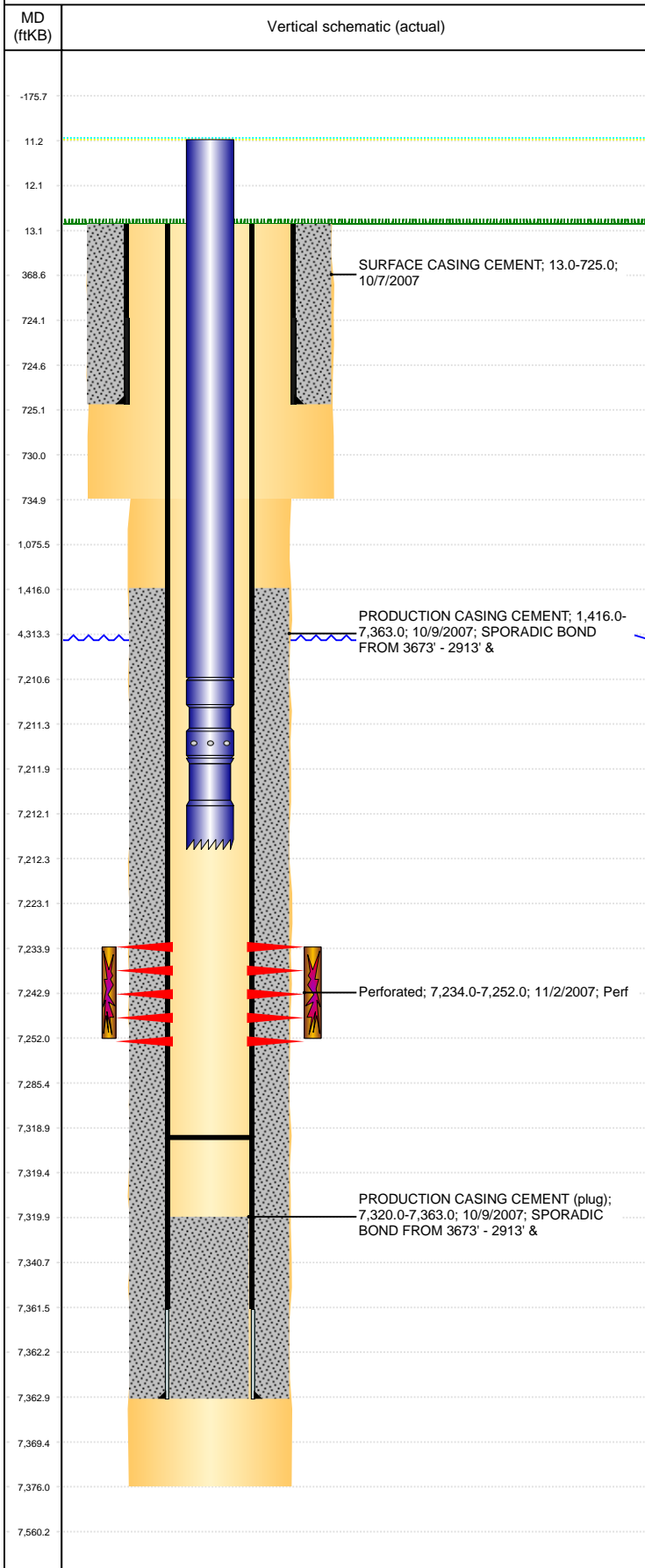


Well Name: MOSSBERG J28-23

VERTICAL, ORIGINAL HOLE, 12/16/2021 12:27:42 PM



Well Header									
API 05-123-26348		Business Unit DJ BASIN			District 15		Well Config VERTICAL		
KB - GL / MSL (ft... 13.00		Spud Date 10/7/2007		P & A Date		Well Production Status TA (AT SURFACE)			SoRT No
Comment FRAC STRING FLOAT AND GOOD PRODUCTION FLOAT ARE STORED IN PIPE YARD									
Surface Location (Congressional)									
Qtr 3 NW	Qtr 4 SE	Section 28	Twnshp 5	Twshn... N	Range 66	Rng E/... W	Actual Latitude (°) 40.36689936	Actual Longitude (°) -104.78034444	
Wellbore Sections									
Section Des			Size (in)			Act Top, MD (ftKB)		Act Btm, MD (ftKB)	
SURFACE			12 1/4			13		735	
PRODUCTION			7 7/8			735		7,376	
Casing Strings									
Csg Des		Run Date		OD (in)	Wt/Len (lb/ft)	Grade	Top, MD (ftKB)	MD (ftKB)	
Surface		10/7/2007		8 5/8	24.00		13.0	725.0	
Production		10/9/2007		4 1/2	11.60	M-80	13.0	7,363.0	
Cement									
Des				Start Date		Top (ftKB)		Btm (ftKB)	
SURFACE CASING CEMENT				10/7/2007		13.0		725.0	
PRODUCTION CASING CEMENT				10/9/2007		1,416.0		7,363.0	
Zone Statuses									
Zone Name		Status Date	Status	Fluid Type	Job			Prod Method	
CODELL		12/14/2011	PR	Gas	RE-FRAC, 9/16/2011 06:00				
CODELL		3/10/2017	SI						
Perforation Data									
Linked Zone			Bnch/Stg	Entered Shot Total	Top (ftKB)		Btm (ftKB)		Date
CODELL, ORIGINAL HOLE				72	7,234.00		7,252.00		11/2/2007
Stimulation Intervals									
Zone				Start Date		Top (ftKB)		Btm (ftKB)	
CODELL, ORIGINAL HOLE				11/9/2007		7,234.0		7,252.0	
CODELL, ORIGINAL HOLE				11/2/2011		7,234.0		7,252.0	
Other In Hole									
Run Date		Des			Make	OD (in)	Top (ftKB)	Btm (ftKB)	
Logs									
Date		Type				Top, MD (ftKB)		Btm, MD (ftKB)	
10/10/2007		COMPENSATED DENSITY				2,650.0		7,349.0	
10/10/2007		INDUCTION				725.0		7,369.0	
10/26/2007		CEMENT BOND				1,300.0		7,325.0	
Plug Back Total Depths									
Date		Type			Com				Depth (ftKB)
9/21/2011		FLOAT COLLAR			CLEAN OUT BEFORE REFRAC				7,346.0
11/10/2011		FILL			TAG				7,319.0