

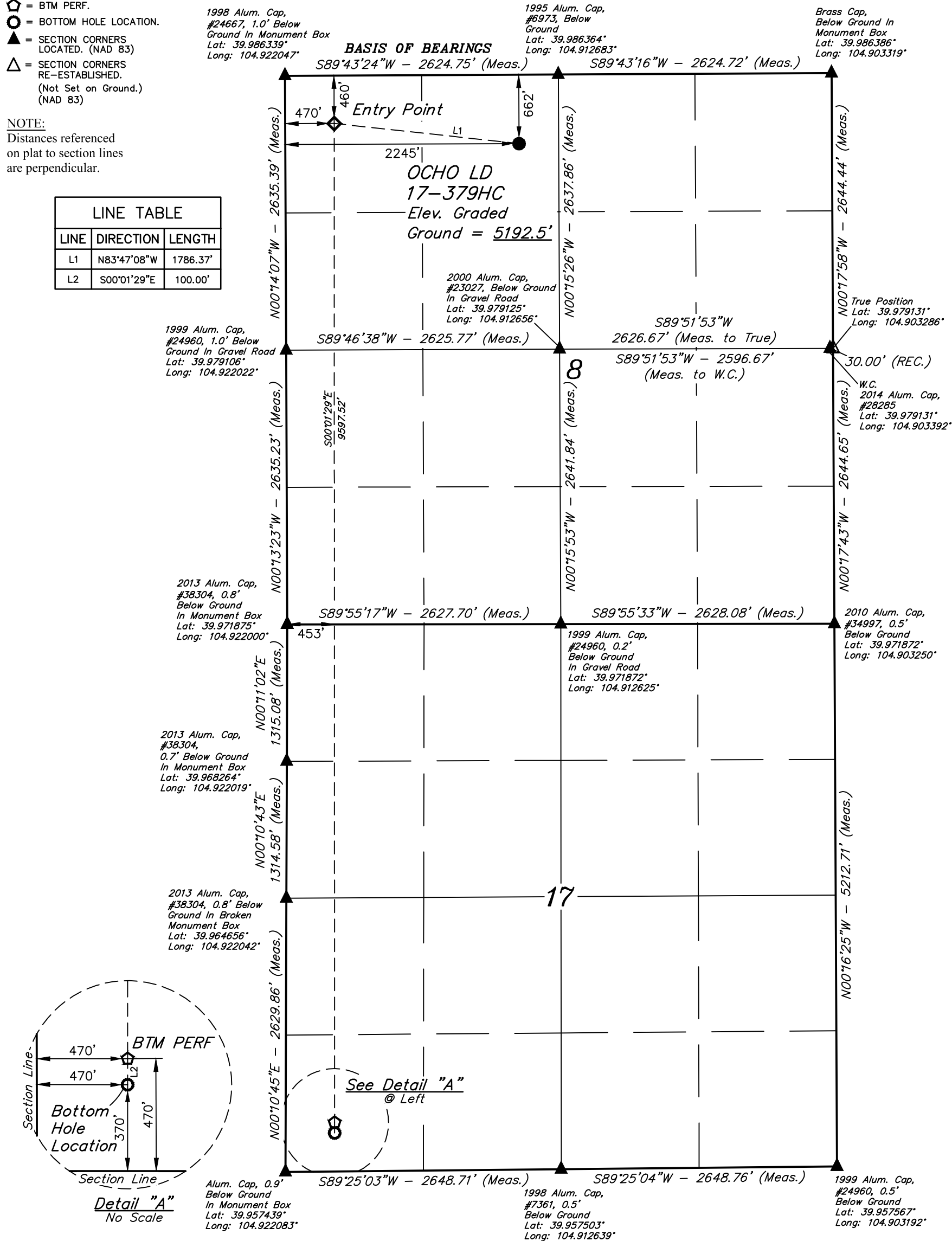
LEGEND:

- 90° SYMBOL
- PROPOSED WELLHEAD.
- ENTRY POINT.
- BTM PERF.
- BOTTOM HOLE LOCATION.
- SECTION CORNERS LOCATED. (NAD 83)
- SECTION CORNERS RE-ESTABLISHED. (Not Set on Ground.) (NAD 83)

NOTE:  
Distances referenced on plat to section lines are perpendicular.

LINE TABLE		
LINE	DIRECTION	LENGTH
L1	N83°47'08"W	1786.37'
L2	S00°01'29"E	100.00'

T1S, R67W, 6th P.M.

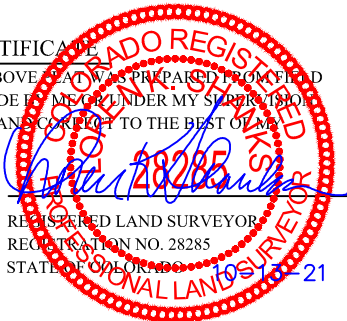


PDOP = 1.4



NAD 83 (SURFACE LOCATION)	NAD 83 (ENTRY POINT)	NAD 83 (BTM PERF)	NAD 83 (BOTTOM HOLE LOCATION)
LATITUDE = 39°59'04.35" (39.984542°)	LATITUDE = 39°59'06.29" (39.985081°)	LATITUDE = 39°57'31.47" (39.958741°)	LATITUDE = 39°57'30.48" (39.958466°)
LONGITUDE = 104°54'50.51" (104.914031°)	LONGITUDE = 104°55'13.32" (104.920367°)	LONGITUDE = 104°55'13.44" (104.920400°)	LONGITUDE = 104°55'13.44" (104.920400°)
NAD 27 (SURFACE LOCATION)	NAD 27 (ENTRY POINT)	NAD 27 (BTM PERF)	NAD 27 (BOTTOM HOLE LOCATION)
LATITUDE = 39°59'04.41" (39.984558°)	LATITUDE = 39°59'06.35" (39.985096°)	LATITUDE = 39°57'31.52" (39.958756°)	LATITUDE = 39°57'30.53" (39.958482°)
LONGITUDE = 104°54'48.60" (104.913500°)	LONGITUDE = 104°55'11.40" (104.919834°)	LONGITUDE = 104°55'11.52" (104.919867°)	LONGITUDE = 104°55'11.52" (104.919867°)

CERTIFICATE OF RECORD  
THIS IS TO CERTIFY THAT THE ABOVE PLAT WAS PREPARED FROM FIELD NOTES OF ACTUAL SURVEYS MADE BY ME OR UNDER MY SUPERVISION, AND THAT THE SAME ARE TRUE AND CORRECT TO THE BEST OF MY KNOWLEDGE AND BELIEF.



REV: 5 10-13-21 J.J. (BTM PERF & BHL CHANGES)

BASIS OF ELEVATION

BENCHMARK JR 53 5026 LOCATED IN THE SW 1/4 SE 1/4 OF SECTION 18, T1N, R68W, 6th P.M., TAKEN FROM 1988 PUBLISHED DATUM BY THE UNITED STATES DEPARTMENT OF THE INTERIOR, GEOLOGICAL SURVEY AS BEING 5028 FEET.



UELS, LLC  
Corporate Office \* 85 South 200 East  
Vernal, UT 84078 \* (435) 789-1017



GREAT WESTERN OPERATING COMPANY

OCHO LD 17-379HC  
NE 1/4 NW 1/4, SECTION 8, T1S, R67W, 6th P.M.  
ADAMS COUNTY, COLORADO

SURVEYED BY	GREG WEIMER	10-06-17	SCALE
DRAWN BY	K.B.	10-06-17	1" = 1000'

WELL LOCATION PLAT