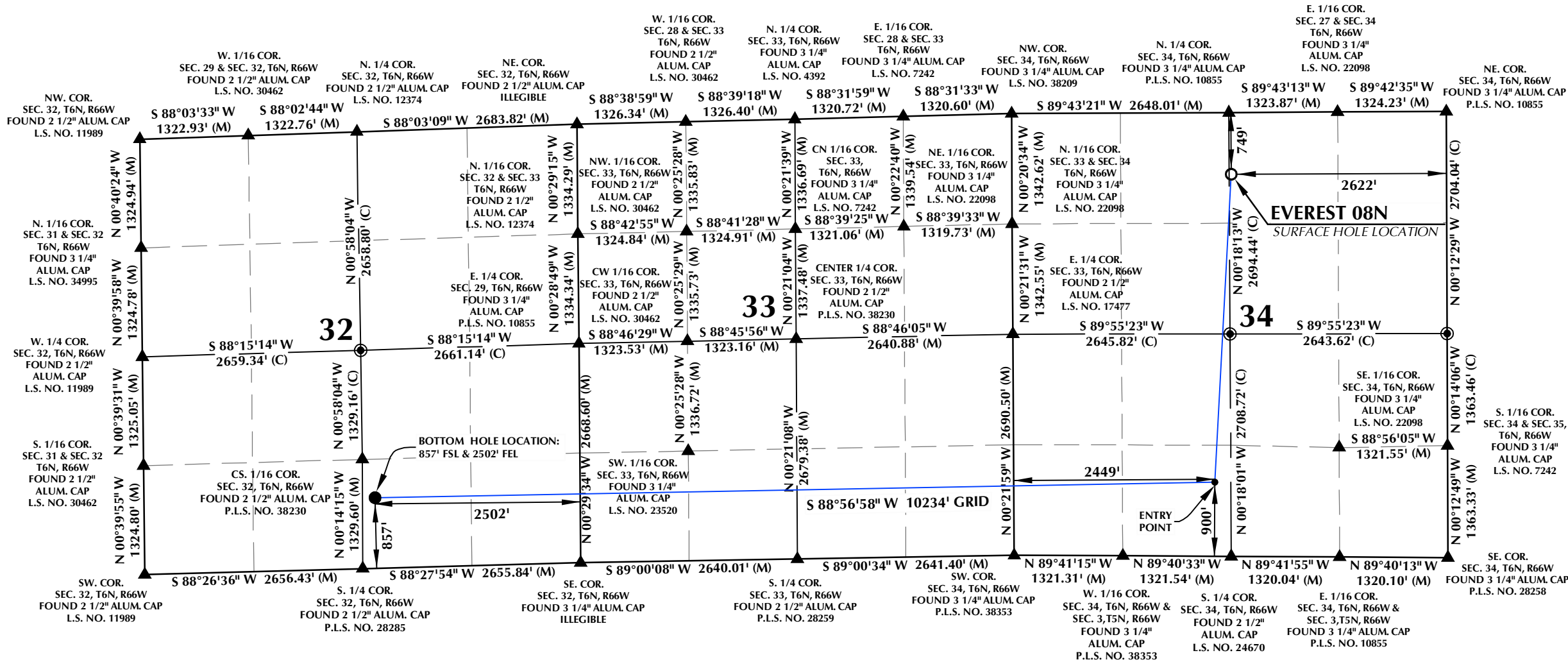


T6N, R66W



**SURFACE HOLE LOCATION: NAD 83**  
**GROUND ELEVATION= 4694.8'**  
**LATITUDE= 40.450123°**  
**LONGITUDE= -104.763789°**  
**ENTRY POINT: NAD 83**  
**LATITUDE= 40.439826°**  
**LONGITUDE= -104.764620°**  
**BOTTOM HOLE LOCATION: NAD 83**  
**LATITUDE= 40.439538°**  
**LONGITUDE= -104.801386°**

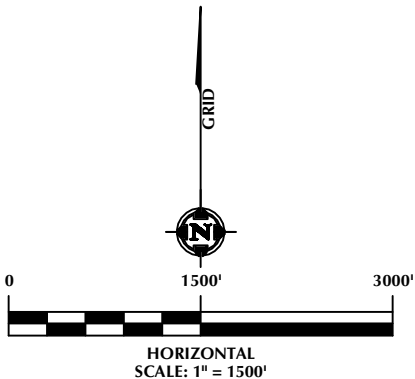
CERTIFICATE OF SURVEYOR:

THIS IS TO CERTIFY THAT THE ABOVE PLAT WAS PREPARED FROM FIELD NOTES OF ACTUAL SURVEYS MADE BY ME OR UNDER MY SUPERVISION AND THAT THE SAME ARE TRUE AND CORRECT TO THE BEST OF MY KNOWLEDGE AND BELIEF. THIS CERTIFICATE DOES NOT REPRESENT A LAND SURVEY PLAT OR IMPROVEMENT SURVEY PLAT AS DEFINED BY C.R.S. 38-51-102 AND CANNOT BE RELIED UPON TO DETERMINE OWNERSHIP.

*Randall K. French*  
RANDALL K. FRENCH  
PROFESSIONAL LAND SURVEYOR  
COLORADO REGISTRATION NUMBER 38512  
7/30/21

NOTICE:  
ACCORDING TO COLORADO STATE LAW YOU MUST COMMENCE ANY LEGAL ACTION BASED UPON ANY DEFECT IN THIS SURVEY WITHIN THREE YEARS AFTER YOU FIRST DISCOVER SUCH DEFECT. IN NO EVENT MAY ANY ACTION BASED UPON ANY DEFECT IN THIS SURVEY BE COMMENCED MORE THAN TEN YEARS FROM THE DATE ON THE CERTIFICATION SHOWN HEREON.

- NOTES:
1. INDICATES SECTION CORNER.
  2. INDICATES CALCULATED CORNER.
  3. ELEVATION BASED ON NAVD88 (GEOID12B).
  4. BASIS OF BEARING DERIVED FROM COLORADO COORDINATE SYSTEM OF 1983 NORTH ZONE.
  5. ALL MEASURED DISTANCES ARE GRID. COMBINED SCALE FACTOR: .99974136 CALCULATED FROM THE NE. CORNER OF SECTION 34, T6N, R66W. OPERATOR: TRAVIS HOLLAND / PDOP = 1.3.
  6. SEE ADDENDUM TO WELL LOCATION CERTIFICATE FOR EXISTING IMPROVEMENTS WITHIN 500' OF THE WELL PAD.
  7. WELL FOOTAGES ARE MEASURED AT RIGHT ANGLES TO THE SECTION LINES.
  8. THE BOTTOM HOLE LOCATION BEARS S88°56'58"W, 10234' FROM THE ENTRY POINT.



LOVELAND OFFICE  
6706 North Franklin Avenue  
Loveland, Colorado 80538  
Phone 970-776-4331  
SHERIDAN OFFICE  
1095 Saberton Avenue  
Sheridan, Wyoming 82801  
Phone 307-674-0609



**PDC  
ENERGY**  
1775 Sherman, Suite 3000  
Denver, Colorado 80203

WELL PAD - EVEREST 6N66W34 1-11

**EVEREST 08N**  
**WELL LOCATION CERTIFICATE**  
**749' FNL & 2622' FEL (NWNE) (SURFACE HOLE LOCATION)**  
**900' FSL, 2449' FWL (SESW) (HEEL POINT)**  
**LOCATED IN SECTION 34**  
**857' FSL & 2502' FEL (SWSE) (BOTTOM HOLE LOCATION)**  
**LOCATED IN SECTION 32**  
**T6N, R66W, 6TH P.M.**  
**WELD COUNTY, COLORADO**

DRAFTED BY:	SJM	CHECKED BY:	RKF
DATE DRAFTED:	7/30/21	DATE SURVEYED:	4/2/21
REVISED:		FILE NAME:	16-108