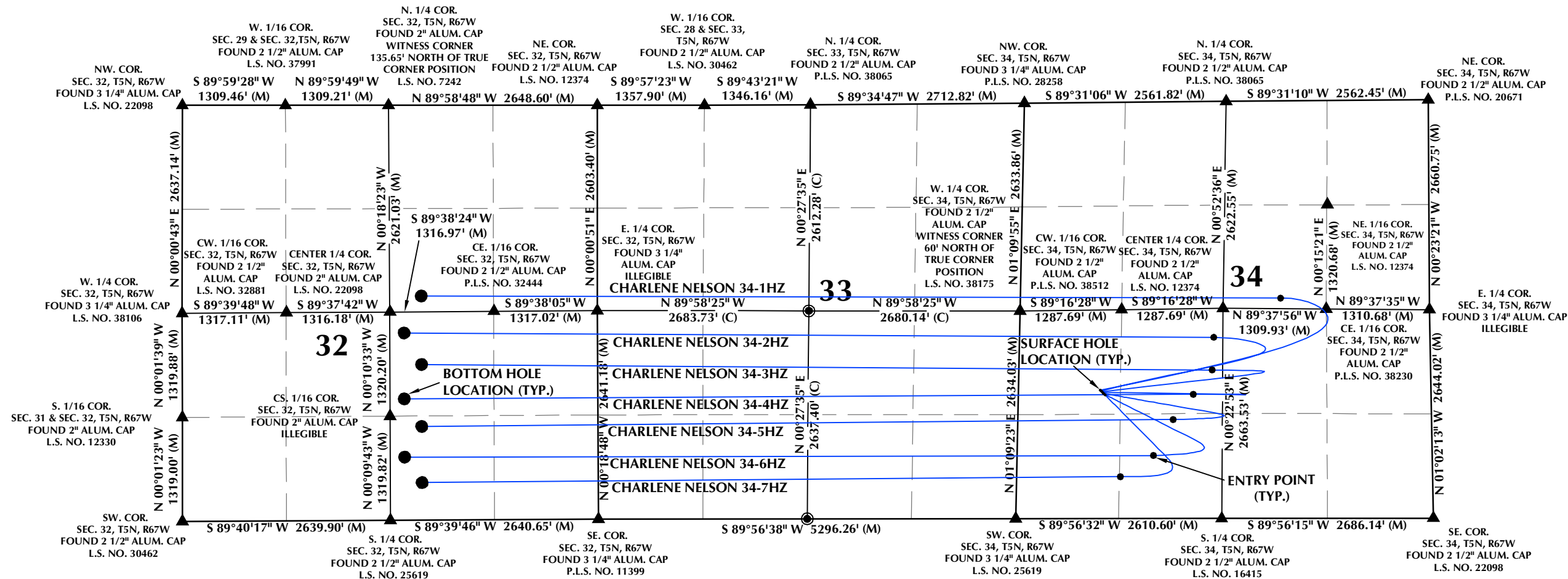
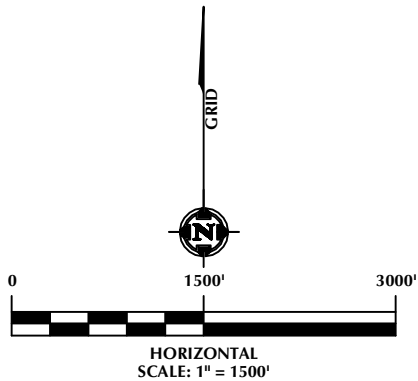


DIRECTIONAL WELL PLAT
SECTIONS 32, 33 & 34, T5N, R67W



- NOTES:
- ▲ INDICATES SECTION CORNER.
 - INDICATES CALCULATED CORNER.
 - BASIS OF BEARING DERIVED FROM COLORADO COORDINATE SYSTEM OF 1983, NORTH ZONE.
 - ALL MEASURED DISTANCES ARE GRID.
 - COMBINED SCALE FACTOR: .99973369 CALCULATED FROM THE SW. CORNER OF SECTION 34, T5N, R67W.
 - WELL FOOTAGES ARE MEASURED AT RIGHT ANGLES TO THE SECTION LINES.



LOVELAND OFFICE
6706 North Franklin Avenue
Loveland, Colorado 80538
Phone 970-776-4331

SHERIDAN OFFICE
1095 Saberton Avenue
Sheridan, Wyoming 82801
Phone 307-674-0609

**Kerr-McGee Oil &
Gas Onshore L.P.**
1099 18th Street
Denver, Colorado 80202

WELL PAD - CHARLENE NELSON 12-34HZ

DIRECTIONAL WELL PLAT
CHARLENE NELSON 34-1HZ,
CHARLENE NELSON 34-2HZ, CHARLENE NELSON 34-3HZ,
CHARLENE NELSON 34-4HZ, CHARLENE NELSON 34-5HZ,
CHARLENE NELSON 34-6HZ, CHARLENE NELSON 34-7HZ
LOCATED IN SECTIONS 32, 33 & 34
T5N, R67W, 6TH P.M.
WELD COUNTY, COLORADO

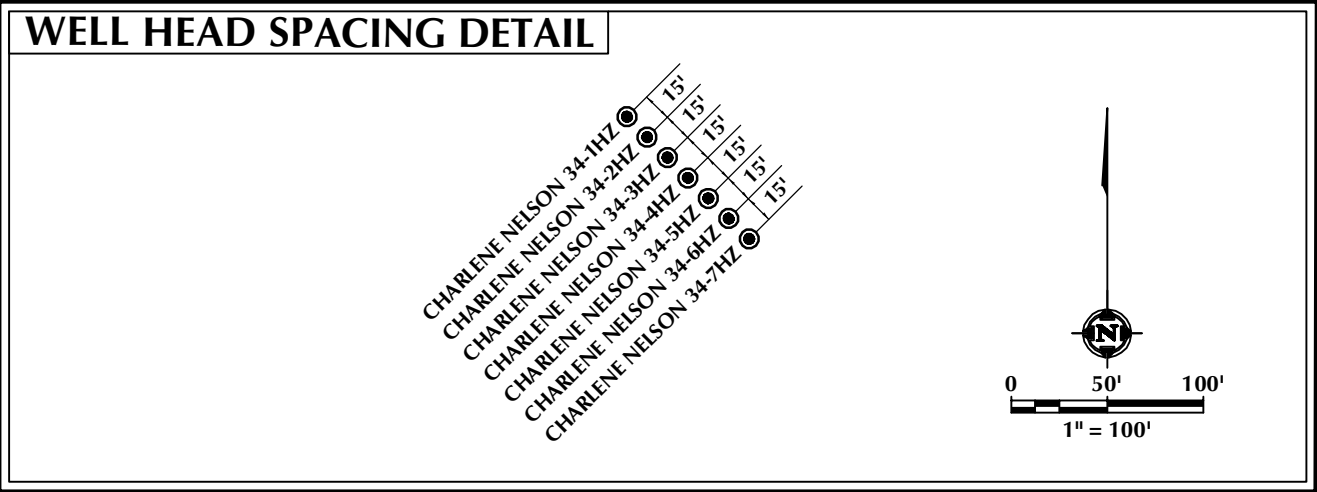
DRAFTED BY:	SJM	CHECKED BY:	RKF	SHEET NO:
DATE DRAFTED:	9/2/21	DATE SURVEYED:	9/13/21	1A
REVISED:	9/13/21	FILE NAME:	20-112	1A OF 1

DIRECTIONAL WELL PLAT
SECTIONS 32, 33 & 34, T5N, R67W

WELL NOTES:

CHARLENE NELSON 34-1HZ
SURFACE HOLE LOCATION: 1627' FSL, 1037' FWL (SEC. 34)
ENTRY POINT: 2500' FNL, 1889' FEL (SEC. 34)
BOTTOM HOLE LOCATION: 2419' FNL, 2235' FEL (SEC. 32)
CHARLENE NELSON 34-2HZ
SURFACE HOLE LOCATION: 1616' FSL, 1048' FWL (SEC. 34)
ENTRY POINT: 2294' FSL, 2466' FWL (SEC. 34)
BOTTOM HOLE LOCATION: 2373' FSL, 2455' FEL (SEC. 32)
CHARLENE NELSON 34-3HZ
SURFACE HOLE LOCATION: 1605' FSL, 1059' FWL (SEC. 34)
ENTRY POINT: 1881' FSL, 2452' FWL (SEC. 34)
BOTTOM HOLE LOCATION: 1971' FSL, 2234' FEL (SEC. 32)
CHARLENE NELSON 34-4HZ
SURFACE HOLE LOCATION: 1595' FSL, 1070' FWL (SEC. 34)
ENTRY POINT: 1572' FSL, 2219' FWL (SEC. 34)
BOTTOM HOLE LOCATION: 1536' FSL, 2457' FEL (SEC. 32)

CHARLENE NELSON 34-5HZ
SURFACE HOLE LOCATION: 1584' FSL, 1081' FWL (SEC. 34)
ENTRY POINT: 1252' FSL, 1970' FWL (SEC. 34)
BOTTOM HOLE LOCATION: 1186' FSL, 2236' FEL (SEC. 32)
CHARLENE NELSON 34-6HZ
SURFACE HOLE LOCATION: 1574' FSL, 1092' FWL (SEC. 34)
ENTRY POINT: 796' FSL, 1729' FWL (SEC. 34)
BOTTOM HOLE LOCATION: 798' FSL, 2456' FEL (SEC. 32)
CHARLENE NELSON 34-7HZ
SURFACE HOLE LOCATION: 1563' FSL, 1102' FWL (SEC. 34)
ENTRY POINT: 528' FSL, 1316' FWL (SEC. 34)
BOTTOM HOLE LOCATION: 472' FSL, 2235' FEL (SEC. 32)



LOVELAND OFFICE
6706 North Franklin Avenue
Loveland, Colorado 80538
Phone 970-776-4331

SHERIDAN OFFICE
1095 Saberton Avenue
Sheridan, Wyoming 82801
Phone 307-674-0609

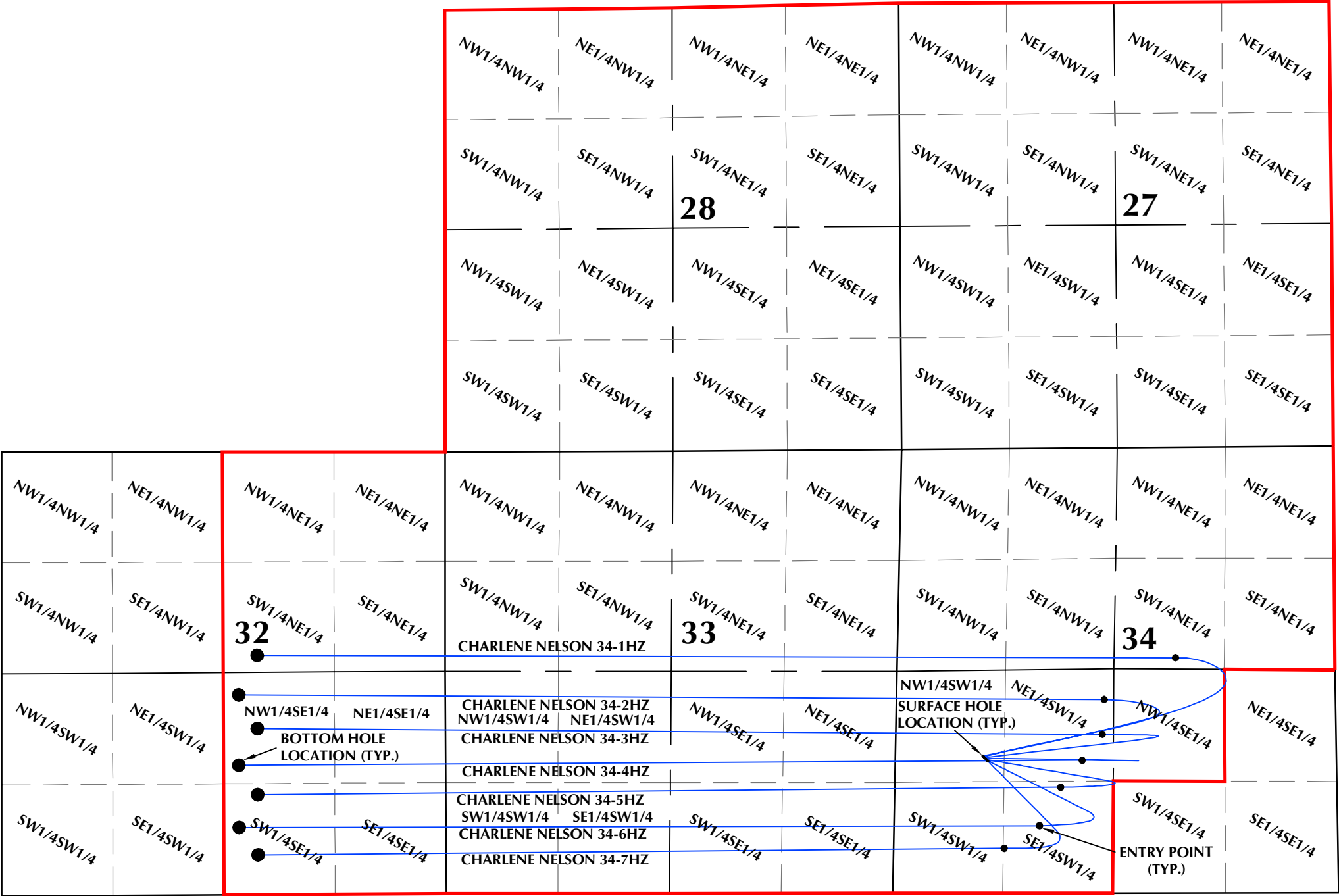
**Kerr-McGee Oil &
Gas Onshore L.P.**
1099 18th Street
Denver, Colorado 80202

WELL PAD - CHARLENE NELSON 12-34HZ

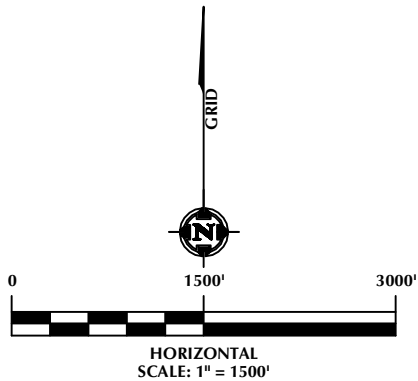
DIRECTIONAL WELL PLAT
CHARLENE NELSON 34-1HZ,
CHARLENE NELSON 34-2HZ, CHARLENE NELSON 34-3HZ,
CHARLENE NELSON 34-4HZ, CHARLENE NELSON 34-5HZ,
CHARLENE NELSON 34-6HZ, CHARLENE NELSON 34-7HZ
LOCATED IN SECTIONS 32, 33 & 34
T5N, R67W, 6TH P.M.
WELD COUNTY, COLORADO

DRAFTED BY:	SJM	CHECKED BY:	RKF	SHEET NO:
DATE DRAFTED:	9/2/21	DATE SURVEYED:	9/13/21	1B
REVISED:	9/13/21	FILE NAME:	20-112	1B OF 1

DIRECTIONAL WELL PLAT
SECTIONS 27, 28, 32, 33 & 34, T5N, R67W



LEGEND:
— DSU BOUNDARY
— WELLBORE TRAJECTORY
● ENTRY POINT
● BOTTOM HOLE LOCATION



LOVELAND OFFICE
6706 North Franklin Avenue
Loveland, Colorado 80538
Phone 970-776-4331

SHERIDAN OFFICE
1095 Saberton Avenue
Sheridan, Wyoming 82801
Phone 307-674-0609

**Kerr-McGee Oil &
Gas Onshore L.P.**
1099 18th Street
Denver, Colorado 80202

WELL PAD - CHARLENE NELSON 12-34HZ

DIRECTIONAL WELL PLAT
CHARLENE NELSON 34-1HZ,
CHARLENE NELSON 34-2HZ, CHARLENE NELSON 34-3HZ,
CHARLENE NELSON 34-4HZ, CHARLENE NELSON 34-5HZ,
CHARLENE NELSON 34-6HZ, CHARLENE NELSON 34-7HZ
LOCATED IN SECTIONS 27, 28, 32, 33 & 34
T5N, R67W, 6TH P.M.
WELD COUNTY, COLORADO

DRAFTED BY:	SJM	CHECKED BY:	RKF	SHEET NO:
DATE DRAFTED:	9/2/21	DATE SURVEYED:	9/13/21	1C
REVISED:	9/13/21	FILE NAME:	20-112	1C OF 1