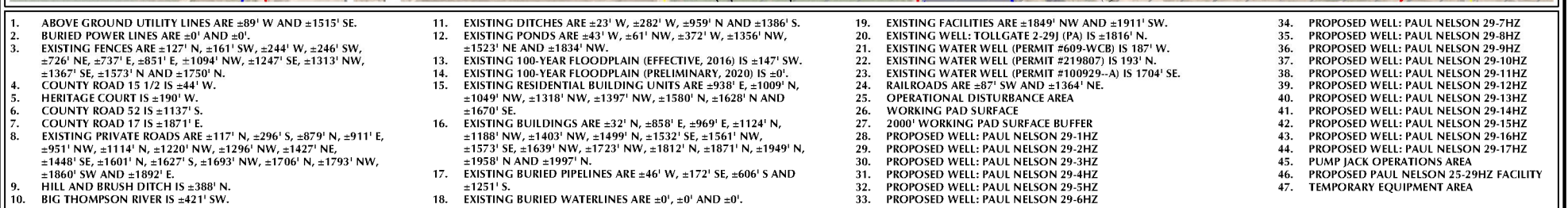


W1/2 SE1/4 SECTION 29, TOWNSHIP 5 NORTH, RANGE 67 WEST, 6TH P.M. WELD COUNTY, COLORADO



- ALL MEASUREMENTS ARE MADE
FROM NEAREST EDGE OF
WORKING PAD SURFACE

SURFACE USE: IRRIGATED CROPLAND

PREPARED FOR:
Kerr-McGee Oil & Gas Onshore L.P.



DATE SURVEYED:	7/14/21
DATE:	9/15/21
DRAFTER:	GLK
REVISED:	

DATA SOURCES & NOTES:

- AERIAL COURTESY OF NEARMAP.
- WATER WELLS COURTESY OF COLORADO DIVISION OF WATER RESOURCES.
- MANY FEATURES ON THIS MAP COME FROM PUBLICLY AVAILABLE DATA AND FEATURES LYING OUTSIDE THE SURFACE PROPERTY MAY HAVE BEEN OBTAINED FROM AERIAL IMAGERY. THE ACCURACY AND COMPLETENESS OF SAID DATA HAS NOT BEEN VERIFIED BY 609 CONSULTING, LLC. EXISTING CONDITIONS MAY DIFFER FROM WHAT IS SHOWN.