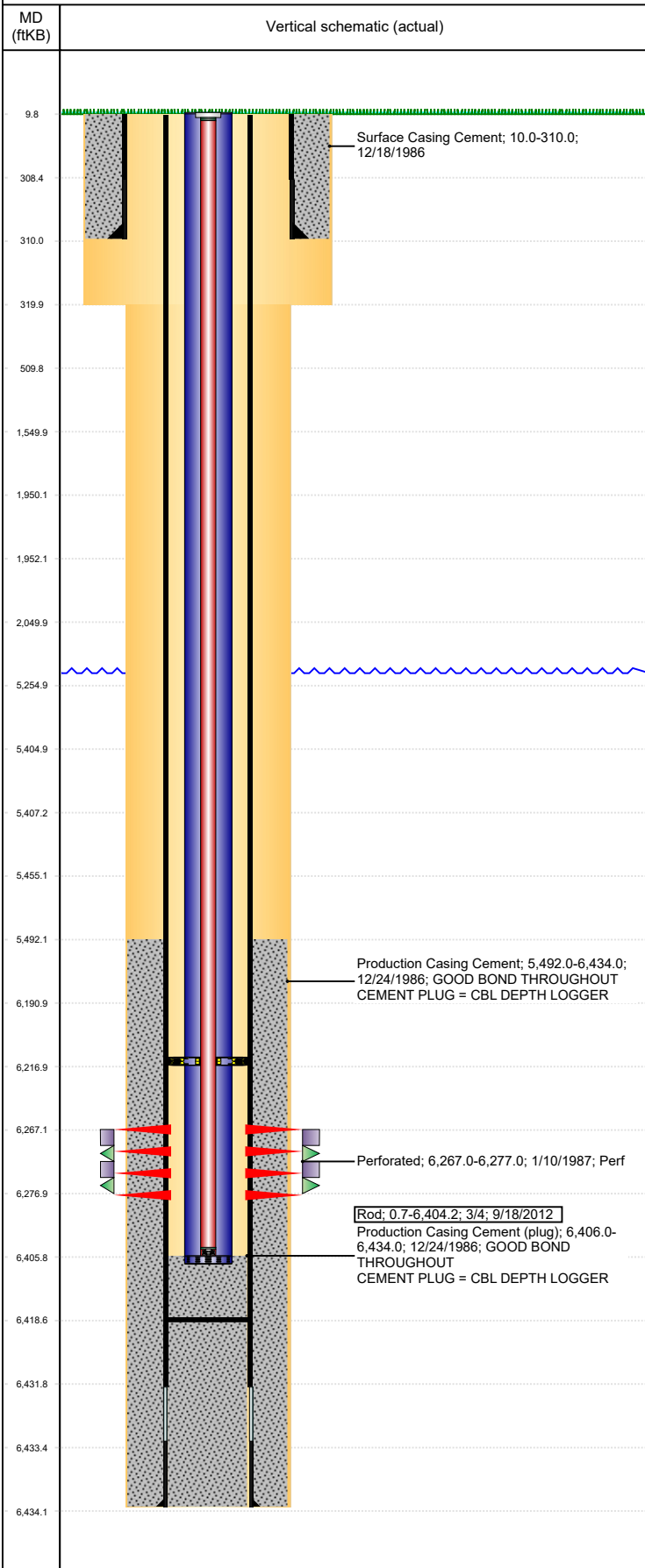


Well Name: LILLI UNIT 06-09

VERTICAL, ORIGINAL HOLE, 12/7/2021 3:37:52 PM



Well Header									
API 05-123-13275		Business Unit DJ BASIN			District 25		Well Config VERTICAL		
KB - GL / MSL (ft... 10.00		Spud Date 12/18/1986		P & A Date		Well Production Status SI			SoRT No
Comment D SAND - TW25 Frac 4/13/95 - NO INFO ON FRAC IN GREELEY FILE.									
Surface Location (Congressional)									
Qtr 3 SE	Qtr 4 NW	Section 9	Twنشp 8	Twنش... N	Range 58	Rng E/... W	Actual Latitude (°) 40.67871000	Actual Longitude (°) -103.86978000	
Wellbore Sections									
Section Des			Size (in)			Act Top, MD (ftKB)		Act Btm, MD (ftKB)	
SURFACE			12 1/4			10		320	
PRODUCTION			7 7/8			320		6,434	
Casing Strings									
Csg Des			Run Date		OD (in)	Wt/Len (lb/ft)	Grade	Top, MD (ftKB)	MD (ftKB)
Surface			12/18/1986		8 5/8	24.00	J-55	10.0	310.0
Production			12/24/1986		4 1/2	11.60		10.0	6,434.0
Cement									
Des					Start Date		Top (ftKB)		Btm (ftKB)
Surface Casing Cement					12/18/1986		10.0		310.0
Production Casing Cement					12/24/1986		5,492.0		6,434.0
Zone Statuses									
Zone Name		Status Date		Status	Fluid Type	Job			Prod Method
D SAND		9/16/2010		PR	Water				Flowing
D SAND		6/13/2017		SI					
Perforation Data									
Linked Zone			Bnch/Stg	Entered Shot Total	Top (ftKB)		Btm (ftKB)		Date
D SAND, ORIGINAL HOLE				40	6,267.00		6,277.00		1/10/1987
Stimulation Intervals									
Zone				Start Date		Top (ftKB)		Btm (ftKB)	
D SAND, ORIGINAL HOLE				4/13/1995		6,267.0		6,277.0	
Other In Hole									
Run Date		Des			Make		OD (in)	Top (ftKB)	Btm (ftKB)
Logs									
Date		Type				Top, MD (ftKB)		Btm, MD (ftKB)	
12/23/1986		COMPUTER ANALYZED LOG				5,390.0		6,434.0	
12/23/1986		DENSITY				5,390.0		6,434.0	
12/23/1986		INDUCTION				310.0		6,434.0	
12/23/1986		MICROLOG				5,390.0		6,434.0	
1/7/1987		CBL/CCL/GR				5,430.0		6,400.0	
Plug Back Total Depths									
Date		Type			Com				Depth (ftKB)
1/7/1987		FILL			CBL DEPTH LOGGER				6,406.0
9/17/2012		FILL			TBG TALLY MEASUREMENT.				6,418.7