

Grand Mesa Operating CO, Nana Unit 1-16
073-06769

Inspection #688311687

12/2/2021

Routine Field Inspection

GRAND MESA OPERATING COMPANY
316-265-3000
NANA-UNIT #1-16
SE SE SECT 16-7S-55W, CR 28
LINCOLN COUNTY, CO
IN CASE OF EMERGENCY CALL 911

Colorado Oil and Gas Conservation Commission
39.43528, -103.54919, 5380.6ft, 230°
12/02/2021 01:00:41 PM



Colorado Oil and Gas Conservation Commission

39.43531, -103.5494, 5364.2ft, 117°

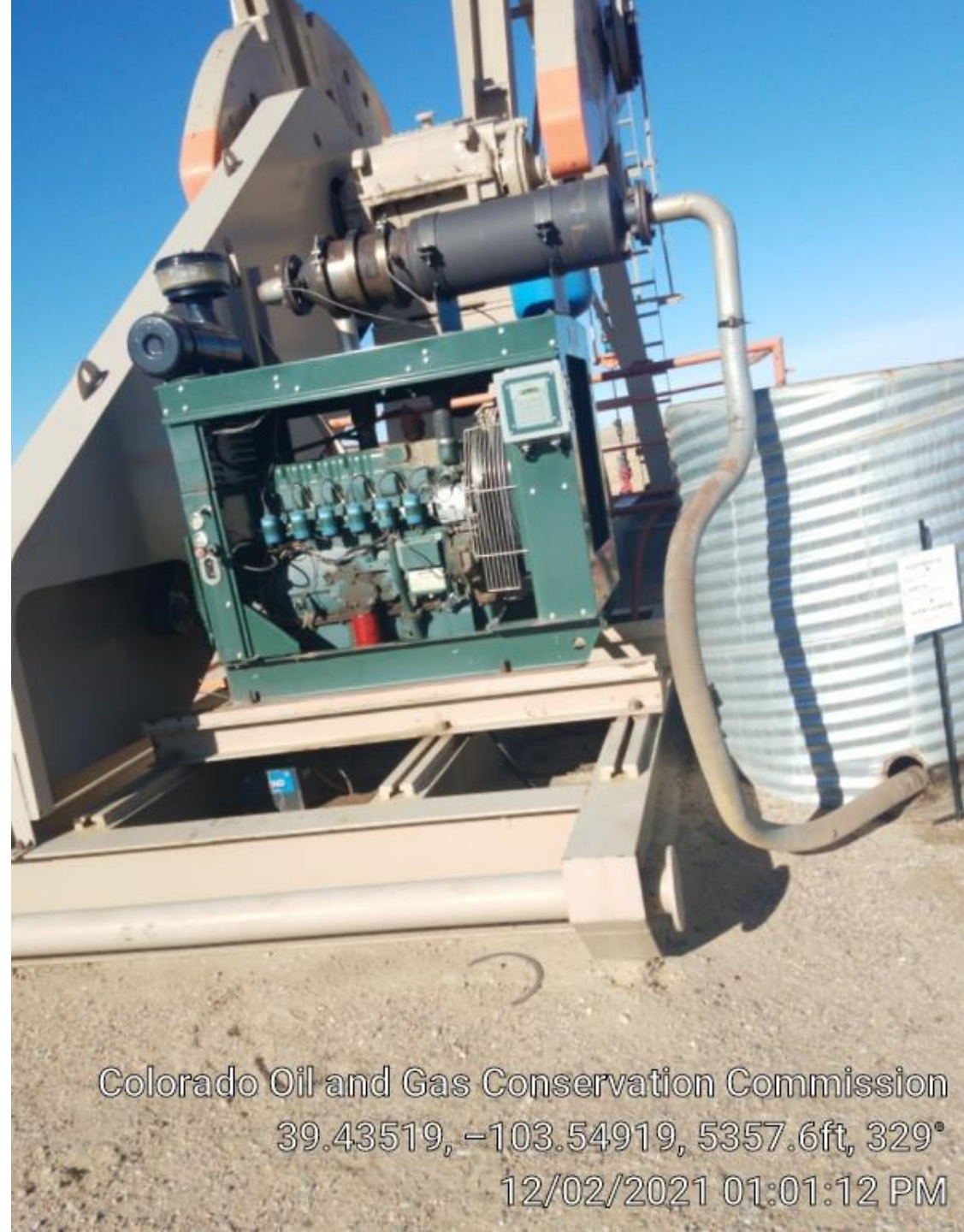
12/02/2021 01:02:02 PM



Colorado Oil and Gas Conservation Commission
39.4352, -103.54927, 5347.8ft, 64°
12/02/2021 01:01:38 PM



Colorado Oil and Gas Conservation Commission
39.43518, -103.54925, 5344.5ft, 72°
12/02/2021 01:01:30 PM



Colorado Oil and Gas Conservation Commission
39.43519, -103.54919, 5357.6ft, 329°
12/02/2021 01:01:12 PM



Colorado Oil and Gas Conservation Commission
39.43525, -103.54921, 5370.7ft, 321°
12/02/2021 01:01:04 PM



Interim Reclamation

Colorado Oil and Gas Conservation Commission

39.43525, -103.5492, 5370.7ft, 173°

12/02/2021 01:00:54 PM



Interim Reclamation

Colorado Oil and Gas Conservation Commission

39.43525, -103.54921, 5370.7ft, 106°

12/02/2021 01:00:57 PM



Interim Reclamation

Colorado Oil and Gas Conservation Commission

39.43521, -103.54919, 5364.2ft, 228°

12/02/2021 01:01:09 PM

A photograph of a wind turbine in a dry, grassy field under a clear blue sky. The turbine is white and stands on a small rise in the middle ground. The foreground is a dirt road or path. The sky is a solid, clear blue.

Interim Reclamation

Colorado Oil and Gas Conservation Commission

39.43518, -103.54924, 5344.5ft, 318°

12/02/2021 01:01:27 PM

A photograph of a dry, grassy field with wind turbines in the background under a clear blue sky. The field is covered in brown, dry grass and low-lying shrubs. In the distance, several white wind turbines are visible on a slight rise. The sky is a clear, solid blue.

Interim Reclamation

Colorado Oil and Gas Conservation Commission

39.4353, -103.54937, 5360.9ft, 277°

12/02/2021 01:01:56 PM

A photograph of a dry, grassy field with a dirt road and industrial structures in the background under a clear blue sky. The field is covered in yellowish-brown grass. A dirt road runs diagonally from the foreground towards the background. In the distance, there are several tall, thin industrial structures, possibly oil or gas wells, and a small building. The sky is a clear, solid blue.

Interim Reclamation

Colorado Oil and Gas Conservation Commission

39.43531, -103.54939, 5360.9ft, 45°

12/02/2021 01:01:59 PM

A wide-angle photograph of a dry, brown field with sparse vegetation. In the distance, an oil pumpjack is visible on the left, and several wind turbines are scattered across the horizon under a clear blue sky.

Interim Reclamation

Colorado Oil and Gas Conservation Commission

228°

12/02/2021 01:08:26 PM



Interim Reclamation

Colorado Oil and Gas Conservation Commission

39.43581, -103.54867, 5354.3ft, 174°

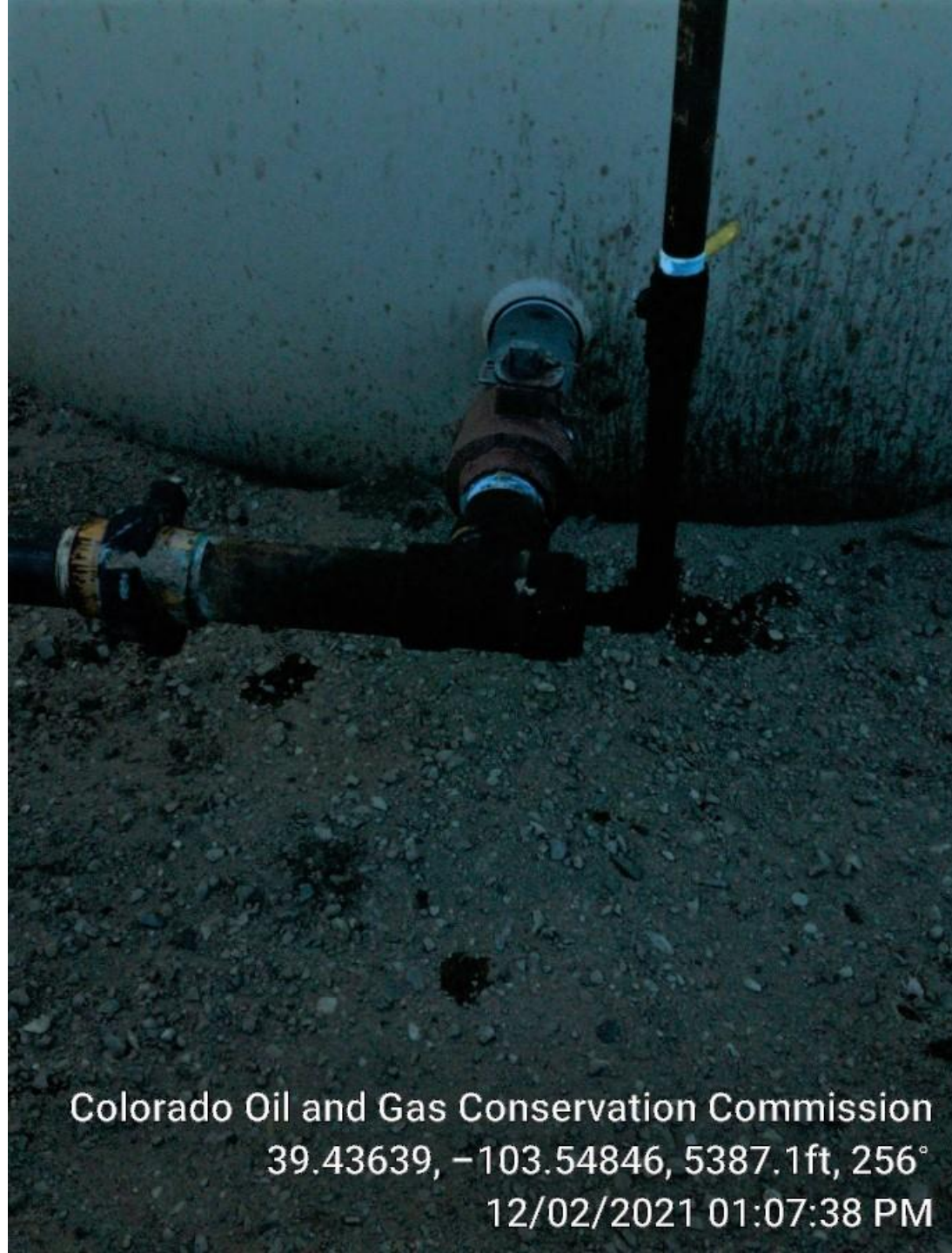
12/02/2021 01:08:52 PM



Colorado Oil and Gas Conservation Commission
39.43613, -103.54845, 5357.6ft, 284°
12/02/2021 01:06:45 PM



Colorado Oil and Gas Conservation Commission
39.43615, -103.54844, 5357.6ft, 338°
12/02/2021 01:06:47 PM



Mechanical conditions at
tank valve.

Colorado Oil and Gas Conservation Commission
39.43639, -103.54846, 5387.1ft, 256°
12/02/2021 01:07:38 PM



Colorado Oil and Gas Conservation Commission
39.43589, -103.54858, 5377.3ft, 3°
12/02/2021 01:03:18 PM



Colorado Oil and Gas Conservation Commission
39.43594, -103.54845, 5380.6ft, 279°
12/02/2021 01:04:49 PM



Colorado Oil and Gas Conservation Commission

39.4359, -103.54842, 5367.5ft, 236°

12/02/2021 01:04:44 PM



Colorado Oil and Gas Conservation Commission
39.4359, -103.54836, 5337.9ft, 240°
12/02/2021 01:04:41 PM



Colorado Oil and Gas Conservation Commission
39.43588, -103.54858, 5377.3ft, 33°
12/02/2021 01:03:21 PM



Colorado Oil and Gas Conservation Commission
39.43595, -103.54852, 5370.7ft, 77°
12/02/2021 01:05:01 PM

MC-11 FLOW ANALYZER

0000126

TOTAL

MCF

0000000

RATE

MCF / DAY

CALIBRATION

ACCESS

DEC.
POINT

INCRE-
MENT

ENTER
STEP

VIEW
DIV.

RESET

Colorado Oil and Gas Conservation Commission
39.43594, -103.54852, 5377.3ft, 234°
12/02/2021 01:05:59 PM

MC-II FLOW ANALYZER

0002 1.8

TOTAL (l MCF

0000000

RATE MCF/DAY

CALIBRATION

ACCESS

DEC.
POINT

INCRE-
MENT

ENTER
STEP

VIEW
DIV

RESET

Colorado Oil and Gas Conservation Commission

39.43594, -103.54852, 5377.3ft, 229°

12/02/2021 01:06:05 PM